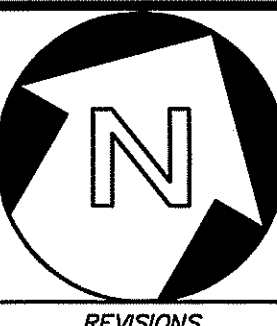
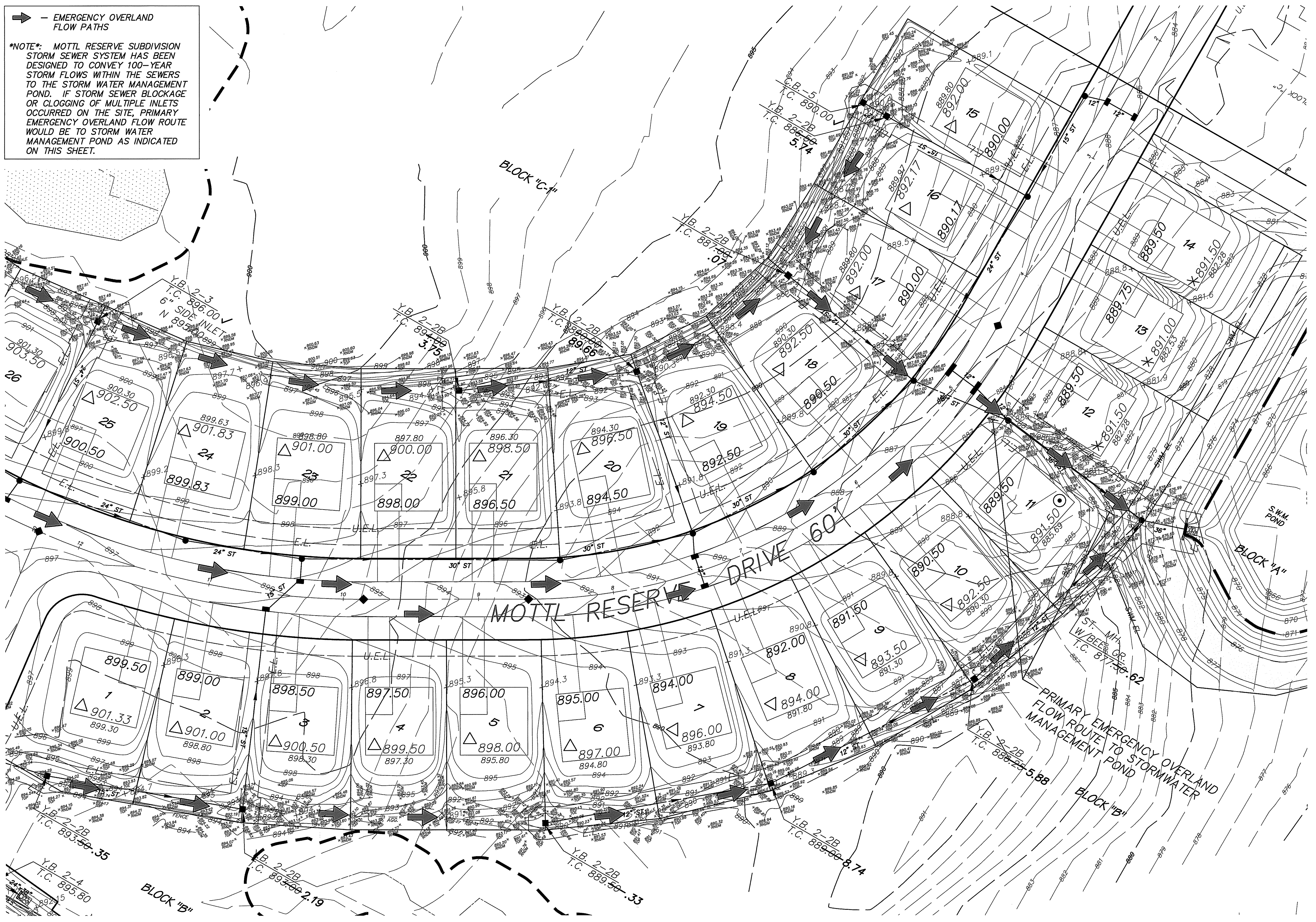


➔ — EMERGENCY OVERLAND FLOW PATHS

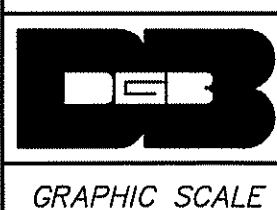
NOTE: MOTTI RESERVE SUBDIVISION STORM SEWER SYSTEM HAS BEEN DESIGNED TO CONVEY 100-YEAR STORM FLOWS WITHIN THE SEWERS TO THE STORM WATER MANAGEMENT POND. IF STORM SEWER BLOCKAGE OR CLOGGING OF MULTIPLE INLETS OCCURRED ON THE SITE, PRIMARY EMERGENCY OVERLAND FLOW ROUTE WOULD BE TO STORM WATER MANAGEMENT POND AS INDICATED ON THIS SHEET.



REVISIONS

AS-BUILT OVERLAND FLOW PATH EXHIBIT
 MOTTI RESERVE SUBDIVISION
 PHASES 1 & 2
 SAGAMORE HILLS TOWNSHIP
 SUMMIT COUNTY, OHIO

DONALD G. BOHNING & ASSOCIATES, INC.
 CIVIL ENGINEERING & SURVEYING
 7979 HUB PARKWAY • VALLEY VIEW, OHIO 44125
 PHONE: (216) 642-1130 FAX: (216) 642-1132
 AP: (vacant) 01.1500-3990.1750-10 View L75010 18 17 (Control) 01/21/2022 2:22 PM



GRAPHIC SCALE
 0' 15' 30'
 HORIZ. SCALE
 1" = 30'
 VERT. SCALE
 1" = 10'

DRY: M.D. D.G.
 DATE: JAN., 2022
 ORDER NO.: 3750-10

1/2