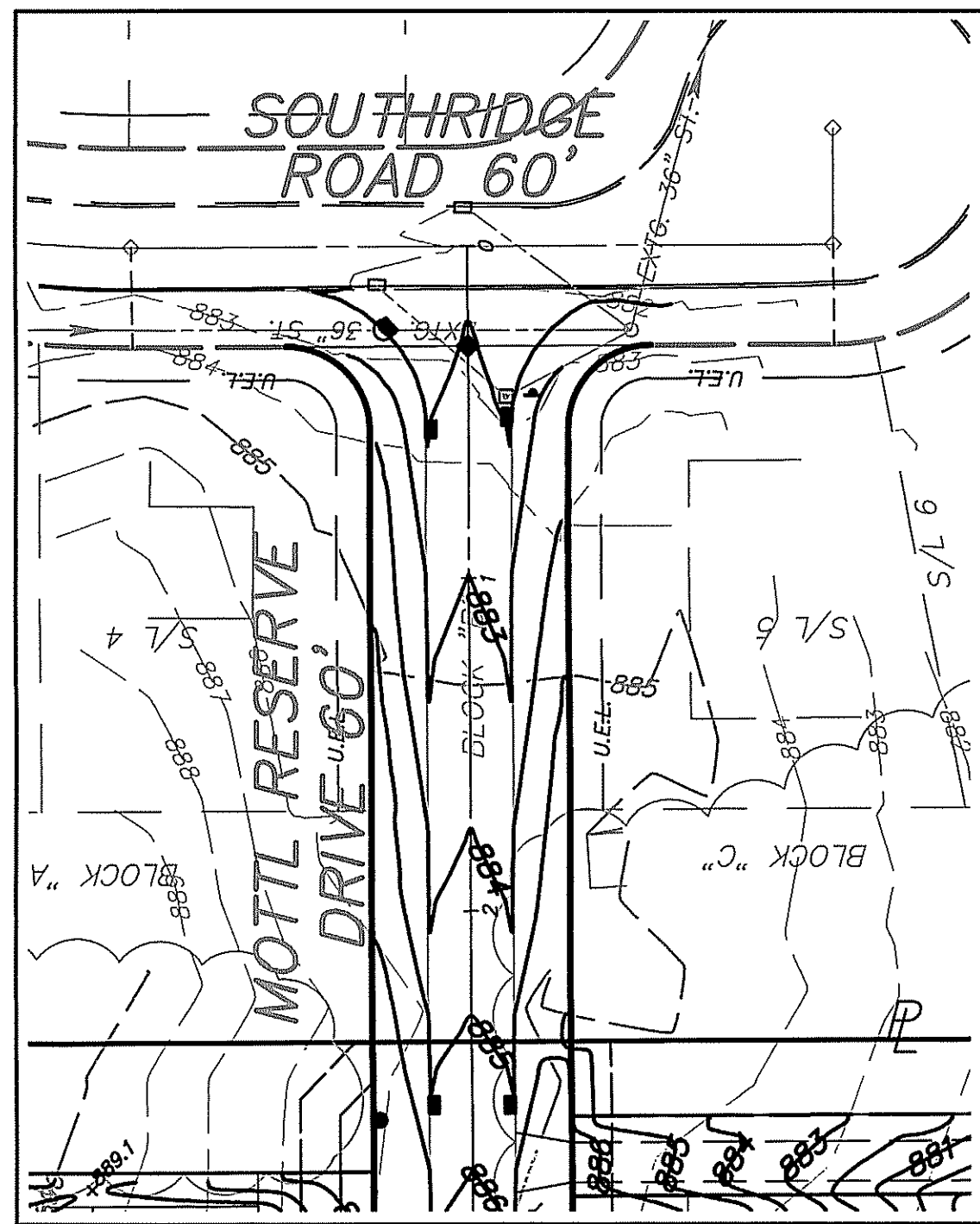


SEE LEFT FOR CONTINUATION



SEE RIGHT FOR CONTINUATION

NOTES:

GRADING AS PROPOSED IS FOR GENERAL DRAINAGE PURPOSES ONLY. EACH HOME SITE PLOT PLAN SHALL ESTABLISH ACTUAL LOT GRADING AND BUILDING FLOOR ELEVATIONS.

FINAL TOPS OF CASTINGS FOR YARD BASINS SHALL BE DETERMINED IN THE FIELD PRIOR TO CONSTRUCTION.

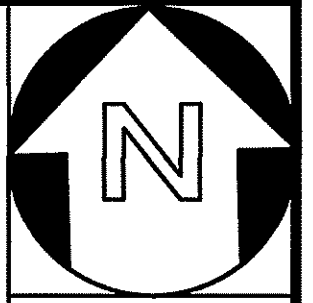
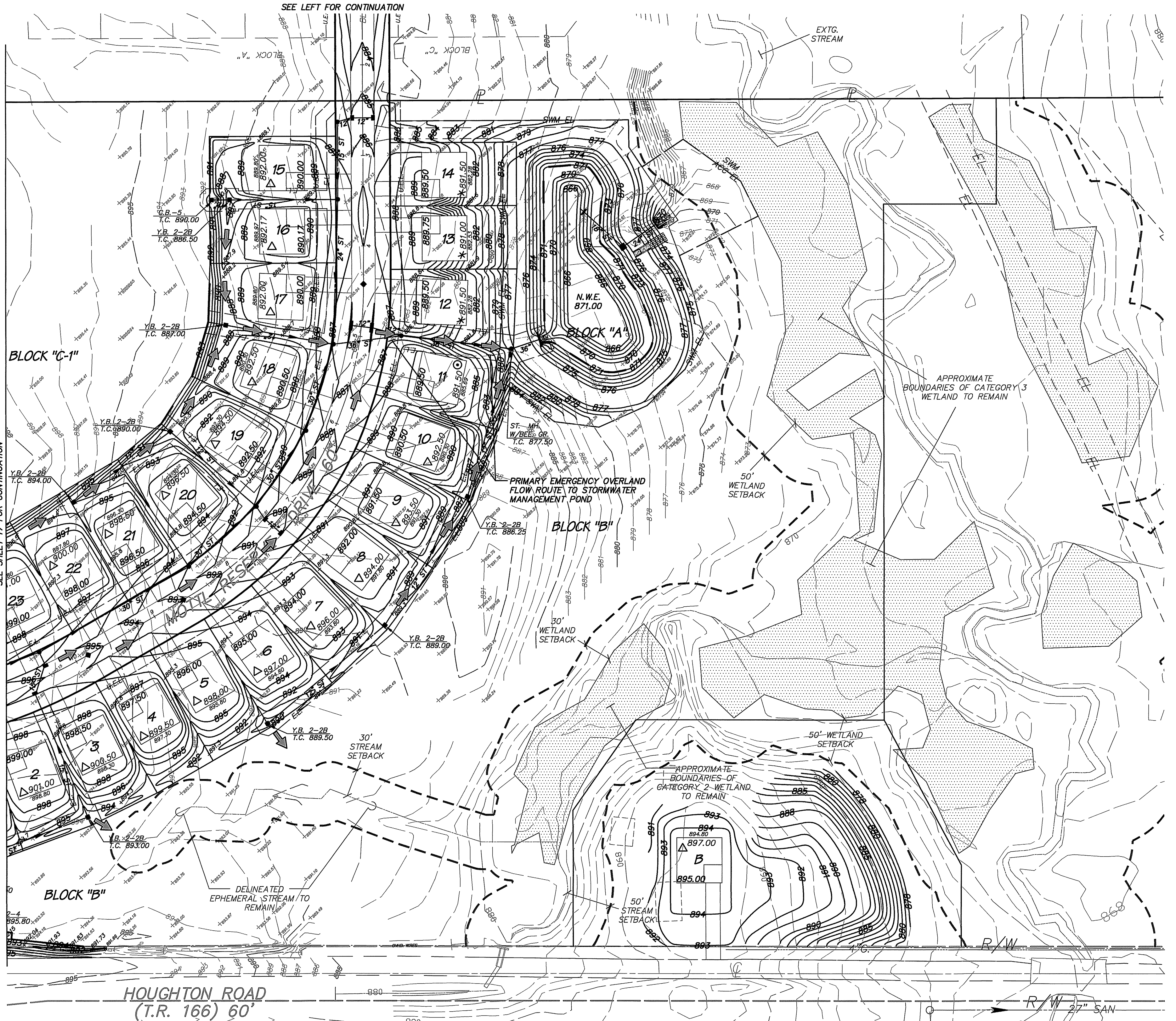
- * - INDICATES PROPOSED "WALKOUT" BASEMENT
- ⊙ - INDICATES PROPOSED "WINDOW" BASEMENT
- △ - INDICATES PROPOSED "STANDARD" BASEMENT

➔ - EMERGENCY OVERLAND FLOW PATHS

NOTE: MOTTL RESERVE SUBDIVISION STORM SEWER SYSTEM HAS BEEN DESIGNED TO CONVEY 100-YEAR STORM FLOWS WITHIN THE SEWERS TO THE STORM WATER MANAGEMENT POND. IF STORM SEWER BLOCKAGE OR CLOGGING OF MULTIPLE INLETS OCCURRED ON THE SITE, PRIMARY EMERGENCY OVERLAND FLOW ROUTE WOULD BE TO STORM WATER MANAGEMENT POND AS INDICATED ON THIS SHEET.

NOTE: EACH SUBLOT MUST ROUTE ALL STORMWATER DRAINAGE FROM A CONDUIT TO THE STORM SEWER LATERAL THAT IS PROVIDED. NO OPEN DISCHARGES FROM A HOUSE CONDUIT ARE PERMITTED.

FOR ADDITIONAL LEGEND, SEE SHEET 17. FOR WETLAND NOTES, SEE SHEET 18.

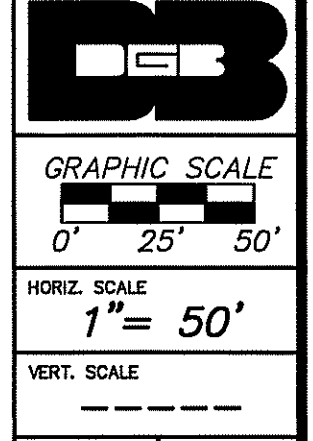


REVISIONS

6/18 PER S.C.E. RVW
7/18 PER S.C.E.
8/18 PER S.C.E.
9/18 RELOCATED
HDWLL NO. 54
9/18 PER S.C.E.

DONALD G. BOHNING & ASSOCIATES, INC.
 GRADING PLAN
 MOTTL RESERVE SUBDIVISION
 PHASES 1 & 2
 SAGAMORE HILLS TOWNSHIP
 SUMMIT COUNTY, OHIO

DONALD G. BOHNING & ASSOCIATES, INC.
 CIVIL ENGINEERING & SURVEYING
 7979 HUB PARKWAY • VALLEY VIEW, OHIO 44125
 PHONE: (216) 642-1130 FAX: (216) 642-1132
 An Equal Opportunity Employer M/F/V/H/V



DRN	DER
CHK	D.G.
DATE	
MAY, 2018	
ORDER NO.	
3750-10	

16
 21