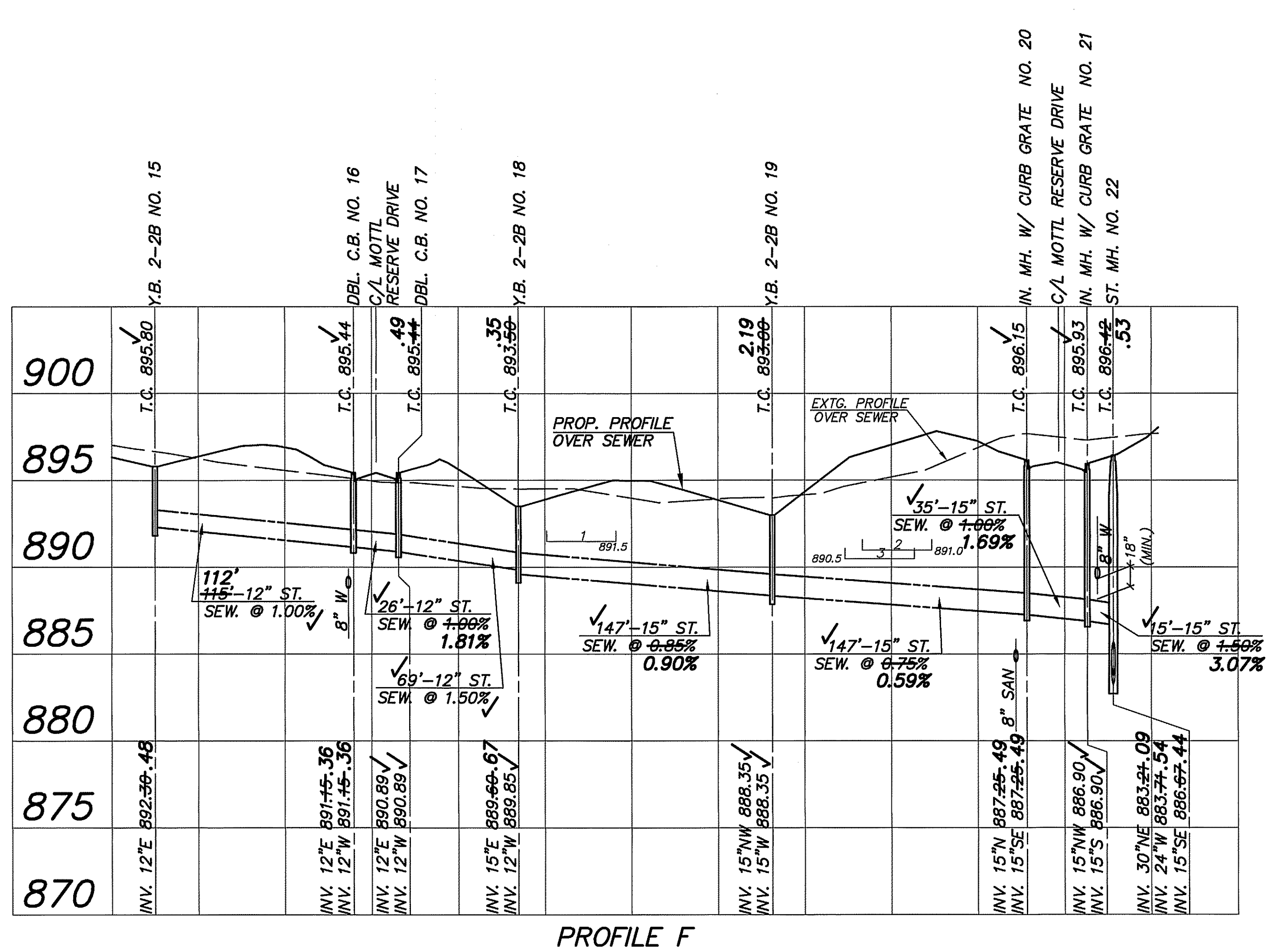
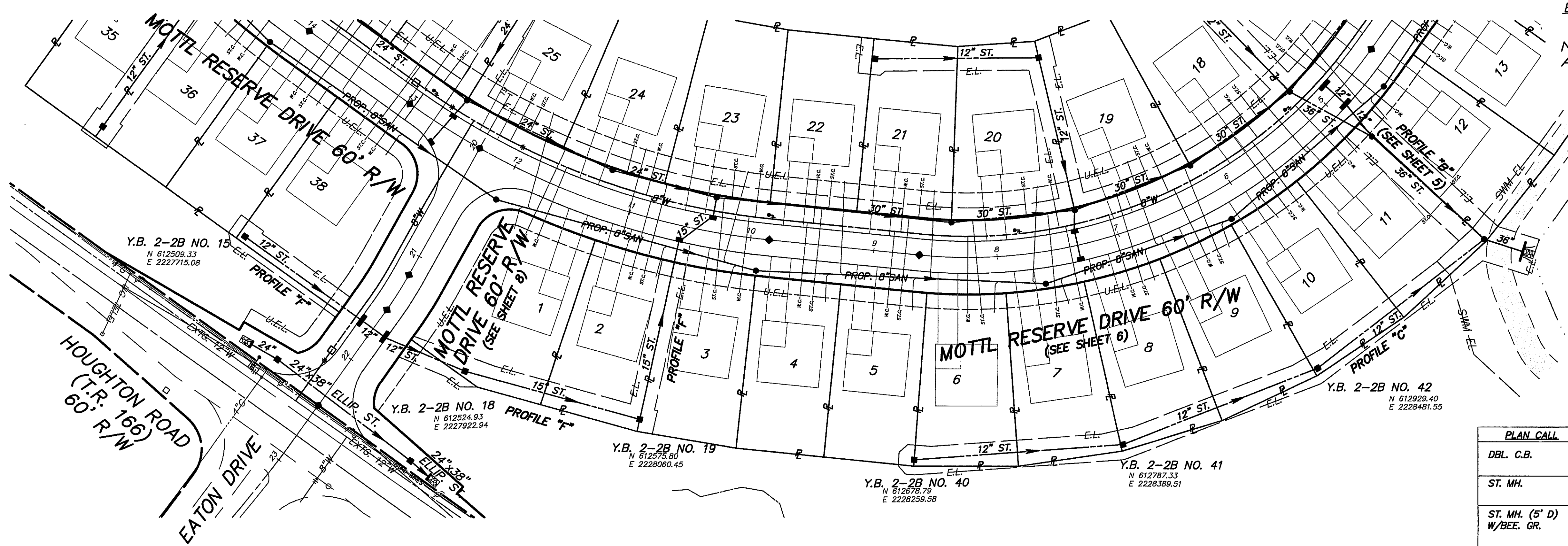


BENCH MARK
 TOP OF HYDRANT
 NORTH SIDE OF HOUGHTON ROAD
 APPROX. 377' W OF C/L EATON DR.
 ELEV. 904.52

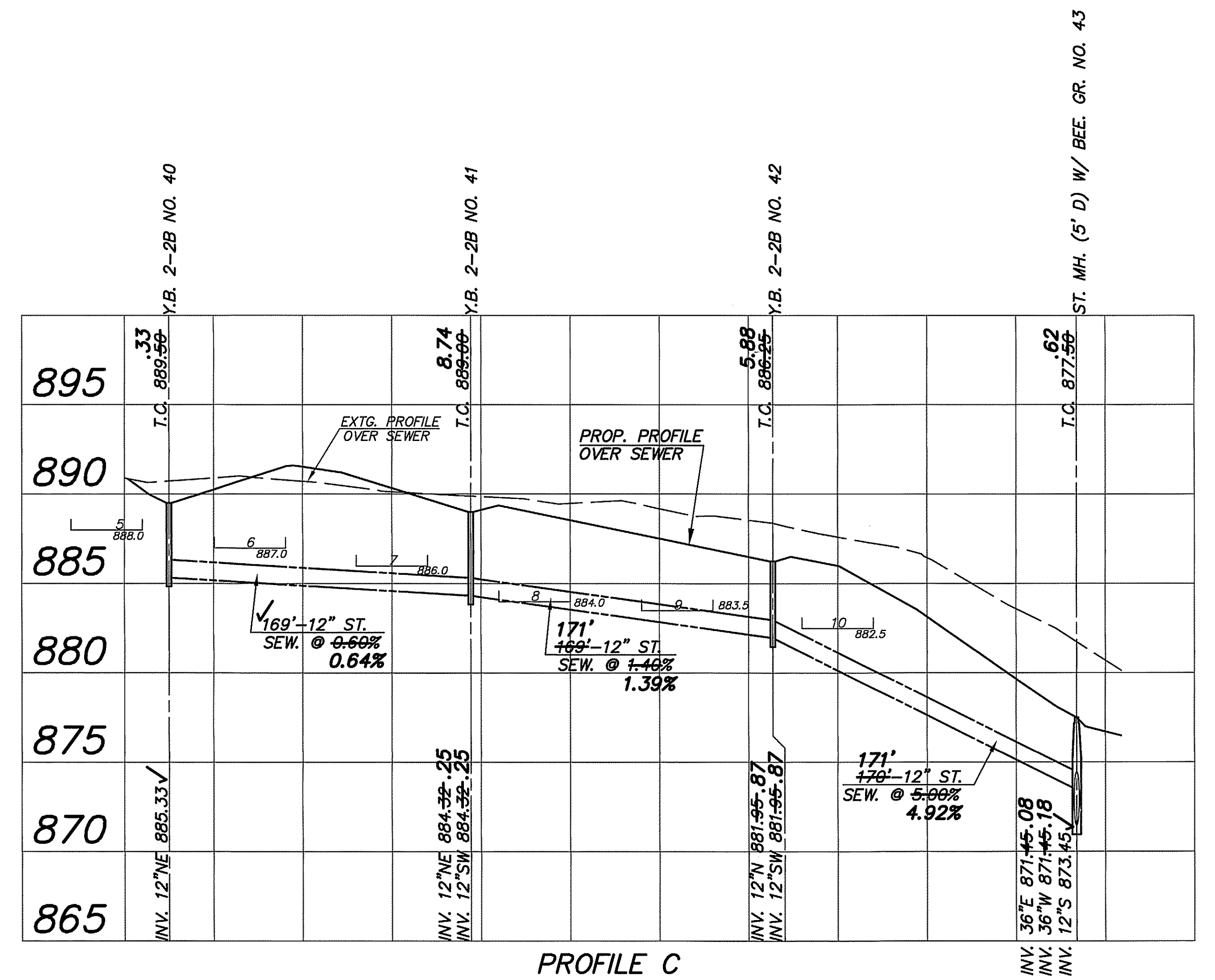
- NOTES:
1. PROPOSED STORM SEWERS SHALL BE SMOOTH INTERIOR, CORRUGATED HDPE (ODOT 707.33), OR APPROVED ALTERNATE. SEE SHEET 3 FOR FULL SPECIFICATIONS AND ALLOWABLE ALTERNATE MATERIALS.
 2. WHERE NOT SHOWN ON THE PROFILES, THE 25-YEAR HYDRAULIC GRADE LINE FOLLOWS THE NORMAL DEPTH OF FLOW WITHIN THE STORM SEWER AS DESIGNED (THERE IS NO SURCHARGE DUE TO DOWNSTREAM CONDITIONS AND THE PIPE CAPACITY IS GREATER THAN THE 25 YEAR Q).

PROPOSED STORM STRUCTURE KEY

PLAN CALL	SPECIFICATION	DETAIL
DBL. C.B.	ODOT STD. CATCH BASIN NO. 3	ODOT SCD CB-2.1 (SEE SHT 13)
ST. MH.	ODOT STD. MANHOLE NO. 3, 48" BASE I.D.	ODOT SCD MH-1.2 (SEE SHT 14)
ST. MH. (5' D) W/BEE. GR.	ODOT STD. MANHOLE NO. 3, 60" BASE I.D. W/EJ NO. 1700 FRAME WITH LOW-PROFILE (6" MAX HEIGHT) BEEHIVE GRATE OR APPROVED EQUAL	ODOT SCD MH-1.2 (SEE SHT 14)
IN. MH. W/CURB GRATE	ODOT STD. MANHOLE NO. 3, 48" BASE I.D. W/FLAT SLAB TOP W/2'-2"x2'-3" OPENING TO ACCEPT ODOT STD. CATCH BASIN NO. 3A TOP SECTION, CURB CASTING, FRAME & GRATE	ODOT SCD MH-1.2 (SEE SHT 14) & ODOT SCD CB-2.2 (SEE SHT 13)
Y.B. 2-2B	ODOT STD. CATCH BASIN NO. 2-2B, AS PER PLAN	ODOT SCD CB-1.1 (SEE SHT 14)



PROFILE F



PROFILE C

IMPROVEMENT PLAN AND PROFILES
 STORM SEWER PROFILES "C", "F" & "G"

DONALD G. BOHNING & ASSOCIATES, INC.
 CIVIL ENGINEERING & SURVEYING

GRAPHIC SCALE
 0' = 1" (HORIZ. SCALE)
 1" = 1' (VERT. SCALE)
 DATE: MAY, 2015
 ORDER NO.: 375