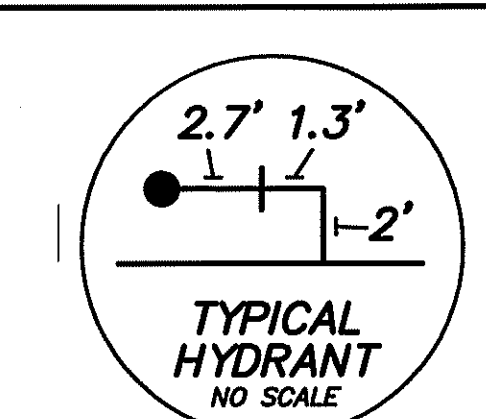
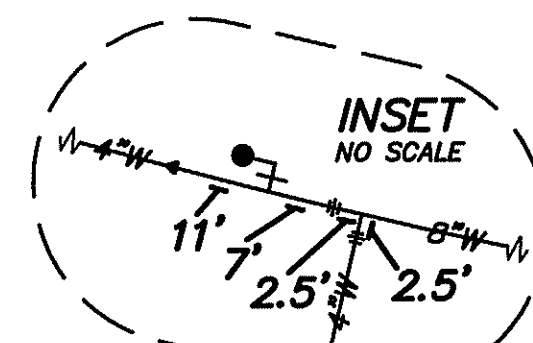


BENCH MARK

TOP OF HYDRANT
NORTH SIDE OF HOUGHTON ROAD
APPROX. 377' W OF C/L EATON DR.
ELEV. 904.52

CURVE TABLE						
CURVE	RADIUS	LENGTH	TANGENT	CHORD	BEARING	DELTA
C3	600.00'	67.15'	33.61'	67.12'	N86°48'43"E	6°24'46"
C5	700.00'	222.42'	112.16'	221.49'	N80°52'45"W	18°72'19"



**** AT END OF PHASE 1 W.M., A FLUSH PIPE & BOX ASS'Y WAS INSTALLED AT STA. 13+07 (AND WAS REMOVED TO BEGIN PHASE 2 W.M.)**

SUBLOT	MOTTL RESERVE DRIVE	
	STORM CONNECTION	WATER CONNECTION
	WYE DISTANCE FROM DOWNSTREAM MH/BASIN	RISER 1" TAP STATION
1	41'	11+61
25	73'	12+13
26	24'	12+97
27	100'	13+75
28	170'	14+25
29	14'	15+24
30	85'	16+11
31	⊙ MH	16+49
32	29'	16+75
33	73'	16+75
34	⊙ MH	16+36
35	* 11'	15+07
36	177'	14+30
37	105'	13+80
38	46'	13+02

* - 8" DIA. WYE & CONN.

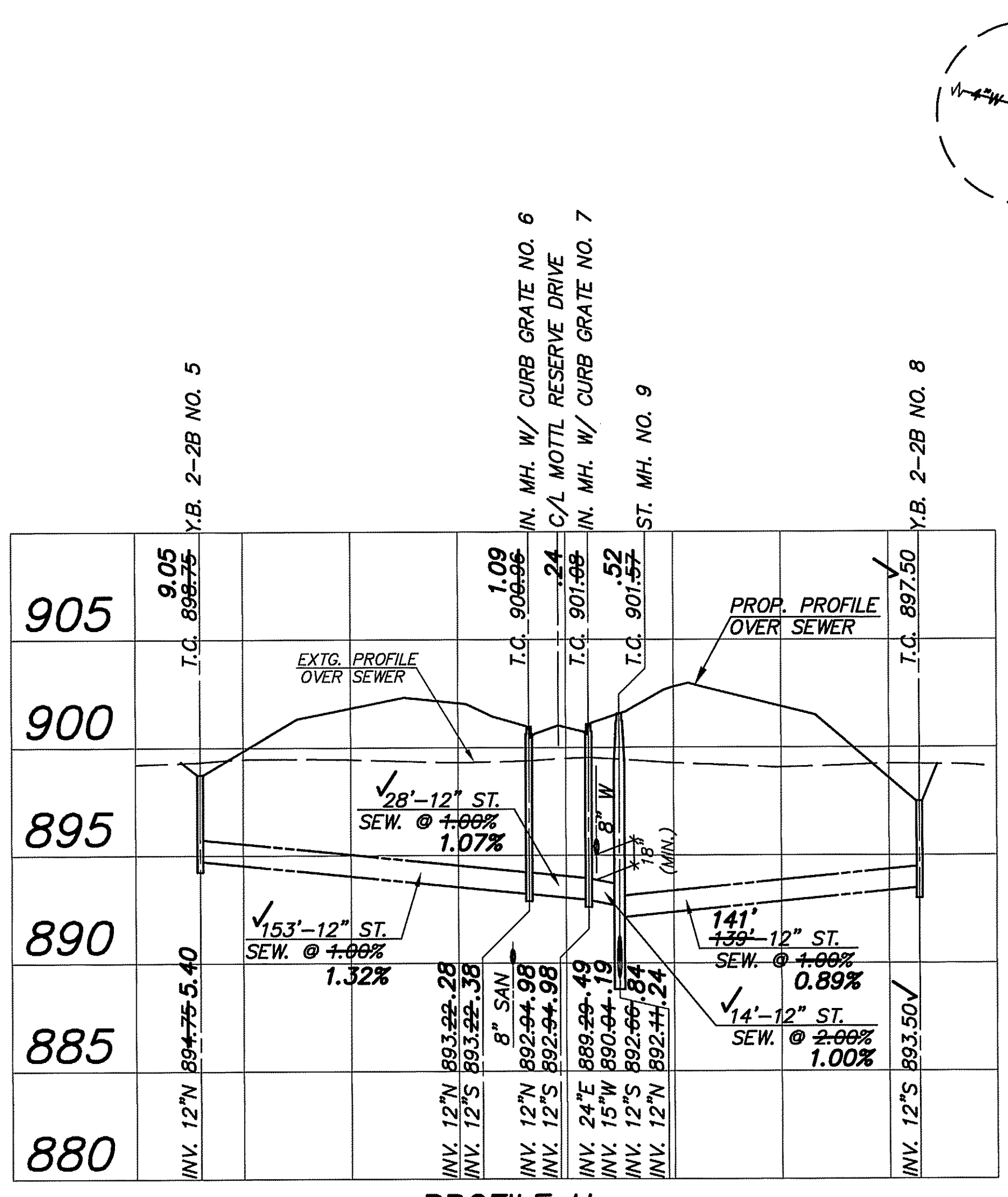
WATER CONNECTIONS SHOWN FOR REFERENCE ONLY AND ARE NOT PART OF THE WATER MAIN APPROVAL. ADDITIONAL PERMITS FOR CONNECTIONS MUST BE OBTAINED FROM C.W.D. PRIOR TO INSTALLATION. CALL THE PERMITS AND SALES UNIT FOR MORE INFORMATION (216) 664-2444 EXT. 5203.

NOTES:

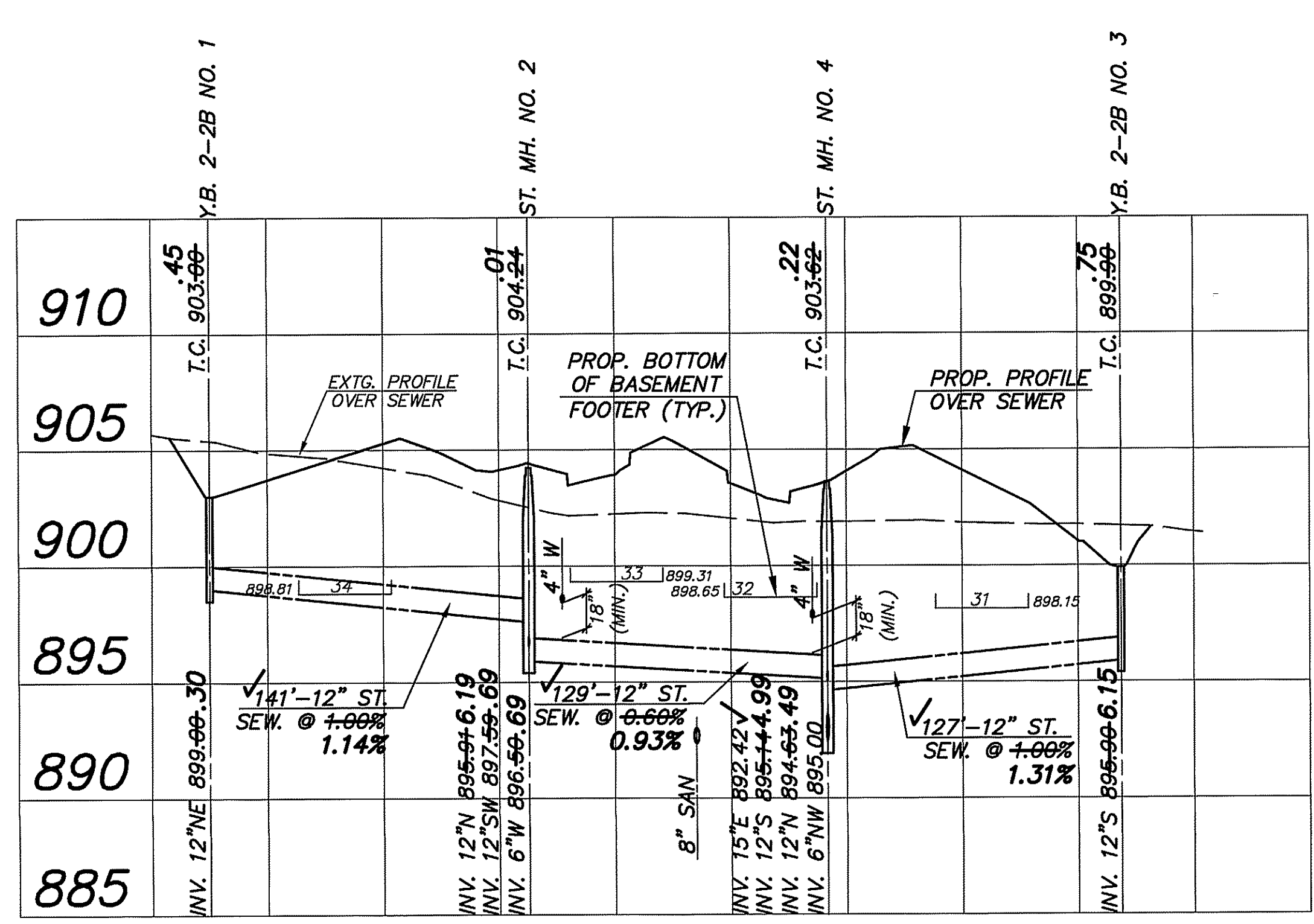
- PROPOSED STORM SEWERS SHALL BE SMOOTH INTERIOR, CORRUGATED HDPE (SHEET 707.33), OR APPROVED ALTERNATE. SEE SHEET 3 FOR FULL SPECIFICATIONS AND ALLOWABLE ALTERNATE MATERIALS.
- ALL PROPOSED SANITARY SEWER MAINLINE SHALL BE PVC SDR-35 MEETING ASTM D3034 WITH JOINTS CONFORMING TO D3212.
- PROPERTY SUBLOT FRONTAGES, SETBACKS AND WIDTHS FOR SUBLOTS 1-25 ARE LOCATED ON PAGE 3 OF THE PHASE 1 RECORD PLAT.
- PROPERTY SUBLOT FRONTAGES, SETBACKS AND WIDTHS FOR SUBLOTS 26-38 ARE LOCATED ON PAGE 3 OF THE PHASE 2 RECORD PLAT.
- WHERE NOT SHOWN ON THE PROFILES, THE 25-YEAR HYDRAULIC GRADE LINE FOLLOWS THE NORMAL DEPTH OF FLOW WITHIN THE STORM SEWER AS DESIGNED (THERE IS NO SURCHARGE DUE TO DOWNSTREAM CONDITIONS AND THE PIPE CAPACITY IS GREATER THAN THE 25 YEAR Q).

PROPOSED STORM STRUCTURE KEY

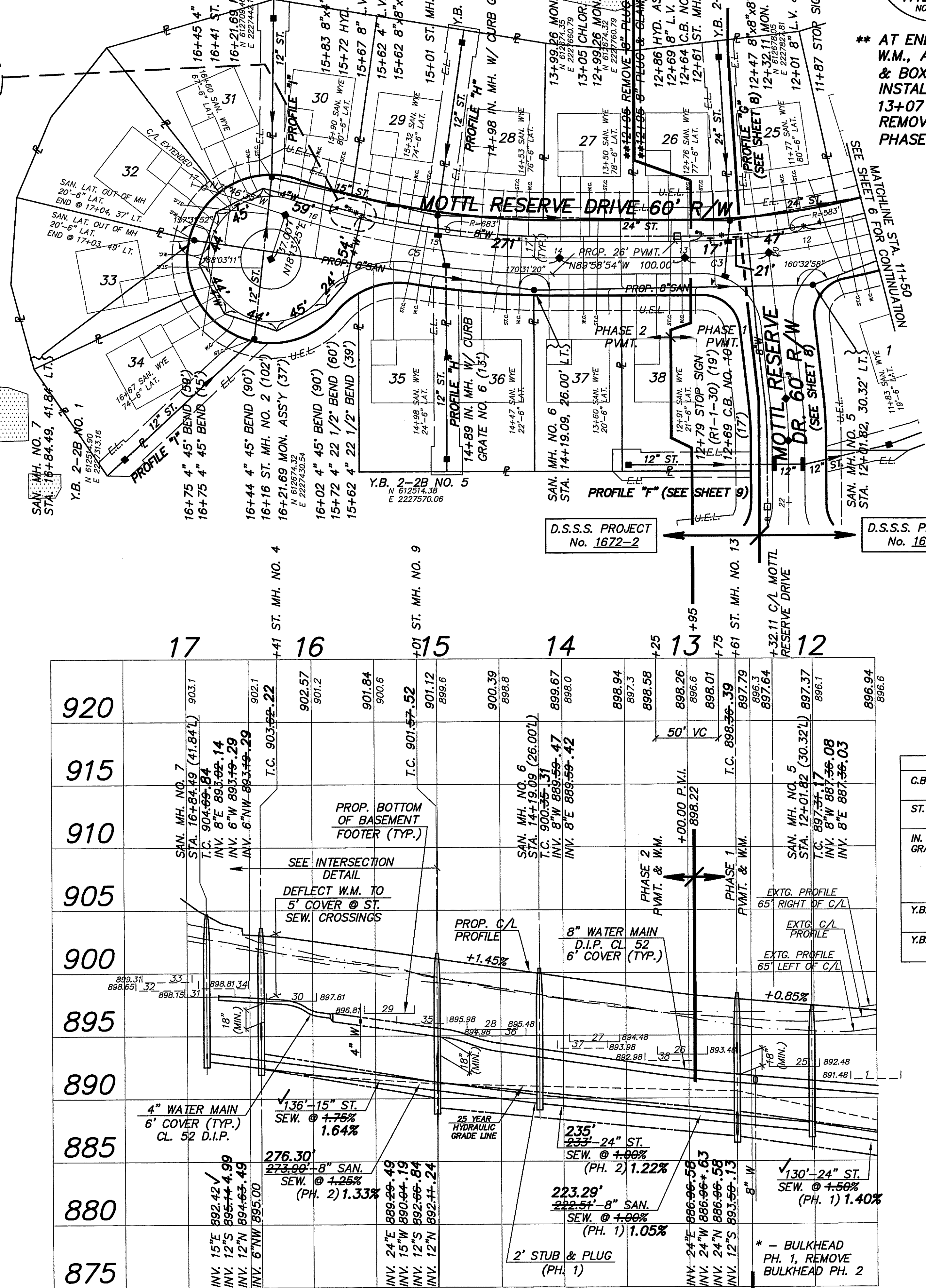
PLAN CALL	SPECIFICATION	DETAIL
C.B.	ODOT STD. CATCH BASIN NO. 3A	ODOT SCD CB-2.2 (SEE SHT 13)
ST. MH.	ODOT STD. MANHOLE NO. 3, 48" BASE I.D.	ODOT SCD MH-1.2 (SEE SHT 14)
IN. MH. W/CURB GRATE	ODOT STD. MANHOLE NO. 3, 48" BASE I.D. W/ FLAT SLAB TOP W/ 2'-2"x2'-3" OPENING TO ACCEPT ODOT STD. CATCH BASIN NO. 3A TOP SECTION, CURB CASTING, FRAME & GRATE	ODOT SCD MH-1.2 (SEE SHT 14) & ODOT SCD CB-2.2 (SEE SHT 13)
Y.B. 2-2B	ODOT STD. CATCH BASIN NO. 2-2B, AS PER PLAN	ODOT SCD CB-1.1 (SEE SHT 14)
Y.B. 2-3	ODOT STD. CATCH BASIN NO. 2-3, AS PER PLAN	ODOT SCD CB-1.2 (SEE SHT 14)



PROFILE H



PROFILE I



MOTTL RESERVE DRIVE

D.S.S.S. PROJ. No. 1672-2 D.S.S.S. PROJ. No. 1672-1

REVISIONS

7/18 PER D.S.S.S.
7/18 PER S.C.E.
7/18 PER C.W.D.
9/18 PER S.C.E.
9/19 UTIL. AS-BUILTS
6/20 UTIL. AS-BUILTS

IMPROVEMENT PLAN AND PROFILES
MOTTL RESERVE DRIVE 60'
MOTTL RESERVE SUBDIVISION
SAGAMORE HILLS TOWNSHIP
SUMMIT COUNTY, OHIO

DONALD G. BOHNING & ASSOCIATES, INC.
CIVIL ENGINEERING & SURVEYING
7979 HUB PARKWAY • VALLEY VIEW, OHIO 44125
PHONE: (216) 642-1130 FAX: (216) 642-1132
AL: ValencourtVA17500-10 (http://www.dgbohn.com) 8/17/2009 8:31 PM

HORIZ. SCALE 1"=50'
VERT. SCALE 1"=5'

DRN S.W. D.G.
DATE MAY, 2018
ORDER NO. 3750-10

7
21