

**MOTTL RESERVE DRIVE**

SUBLOT	STORM CONNECTION		WATER CONNECTION	
	WYE DISTANCE FROM DOWNSTREAM MH/BASIN	R I S E	1" TAP STATION	
10	58'	-	5+66	
11	45'	-	5+18	
12	49'	-	4+68	
13	96'	-	4+04	
14	31'	-	3+07	
15	36'	-	3+02	
16	99'	-	3+99	
17	23'	-	4+80	
18	33'	-	5+60	

WATER CONNECTIONS SHOWN FOR REFERENCE ONLY AND ARE NOT PART OF THE WATER MAIN APPROVAL. ADDITIONAL PERMITS FOR CONNECTIONS MUST BE OBTAINED FROM C.W.D. PRIOR TO INSTALLATION. CALL THE PERMITS AND SALES UNIT FOR MORE INFORMATION (216) 664-2444 EXT. 5203.

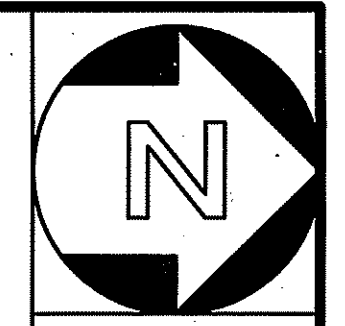
**BENCH MARK**  
TOP OF HYDRANT  
NORTH SIDE OF HOUGHTON ROAD  
APPROX. 377' W OF C/L EATON DR.  
ELEV. 904.52

**NOTE:**  
\* CONTRACTOR TO VERIFY LOCATION OF EXISTING UNDERGROUND ELECTRIC, TELEPHONE, GAS LINES, ETC. PRIOR TO CONSTRUCTION.

- NOTES:**
1. PROPOSED STORM SEWERS SHALL BE SMOOTH INTERIOR, CORRUGATED HDPE (ODOT 707.33), OR APPROVED ALTERNATE. SEE SHEET 3 FOR FULL SPECIFICATIONS AND ALLOWABLE ALTERNATE MATERIALS.
  2. ALL PROPOSED SANITARY SEWER MAINLINE SHALL BE PVC SDR-35 MEETING ASTM D3034 WITH JOINTS CONFORMING TO D3212.
  3. PROPERTY SUBLOT FRONTS, SETBACKS AND WIDTHS FOR SUBLOTS 1-25 ARE LOCATED ON PAGE 3 OF THE PHASE 1 RECORD PLAT.
  4. WHERE NOT SHOWN ON THE PROFILES, THE 25-YEAR HYDRAULIC GRADE LINE FOLLOWS THE NORMAL DEPTH OF FLOW WITHIN THE STORM SEWER AS DESIGNED (THERE IS NO SURCHARGE DUE TO DOWNSTREAM CONDITIONS AND THE PIPE CAPACITY IS GREATER THAN THE 25 YEAR Q).

**PROPOSED STORM STRUCTURE KEY**

PLAN CALL	SPECIFICATION	DETAIL
C.B.	ODOT STD. CATCH BASIN NO. 3A	ODOT SCD CB-2.2 (SEE SHT 13)
DBL. C.B.	ODOT STD. CATCH BASIN NO. 3	ODOT SCD CB-2.1 (SEE SHT 13)
ST. MH.	48" STD. MANHOLE NO. 3, 48" BASE I.D.	ODOT SCD MH-1.2 (SEE SHT 14)
ST. MH. (5' D)	ODOT STD. MANHOLE NO. 3, 60" BASE I.D.	ODOT SCD MH-1.2 (SEE SHT 14)
ST. MH. (5' D) W/BEE. GR.	ODOT STD. MANHOLE NO. 3, 60" BASE I.D. W/EJ NO. 1700 FRAME WITH LOW-PROFILE (6" MAX HEIGHT) BEEHIVE GRATE OR APPROVED EQUAL	ODOT SCD MH-1.2 (SEE SHT 14)
IN. MH. (5' D) W/CURB GRATE	ODOT STD. MANHOLE NO. 3, 60" BASE I.D. (DOGHOUSE CONSTRUCTION) W/ FLAT SLAB TOP W/2'-2"x2'-3" OPENING TO ACCEPT ODOT STD. CATCH BASIN NO. 3A TOP SECTION, CASTING, FRAME & GRATE	ODOT SCD MH-1.2 (SEE SHT 14) & ODOT SCD CB-2.2 (SEE SHT 13)
C.B.-5	ODOT STD. CATCH BASIN NO. 5, WITH GRATE, "B", WITHOUT APRON	ODOT SCD CB-3.2
Y.B. 2-2B	ODOT STD. CATCH BASIN NO. 2-2B, AS PER PLAN	ODOT SCD CB-1.1 (SEE SHT 14)

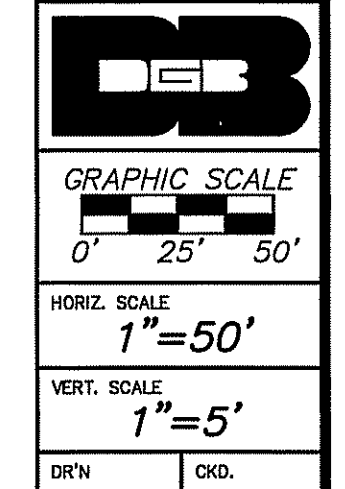


**REVISIONS**

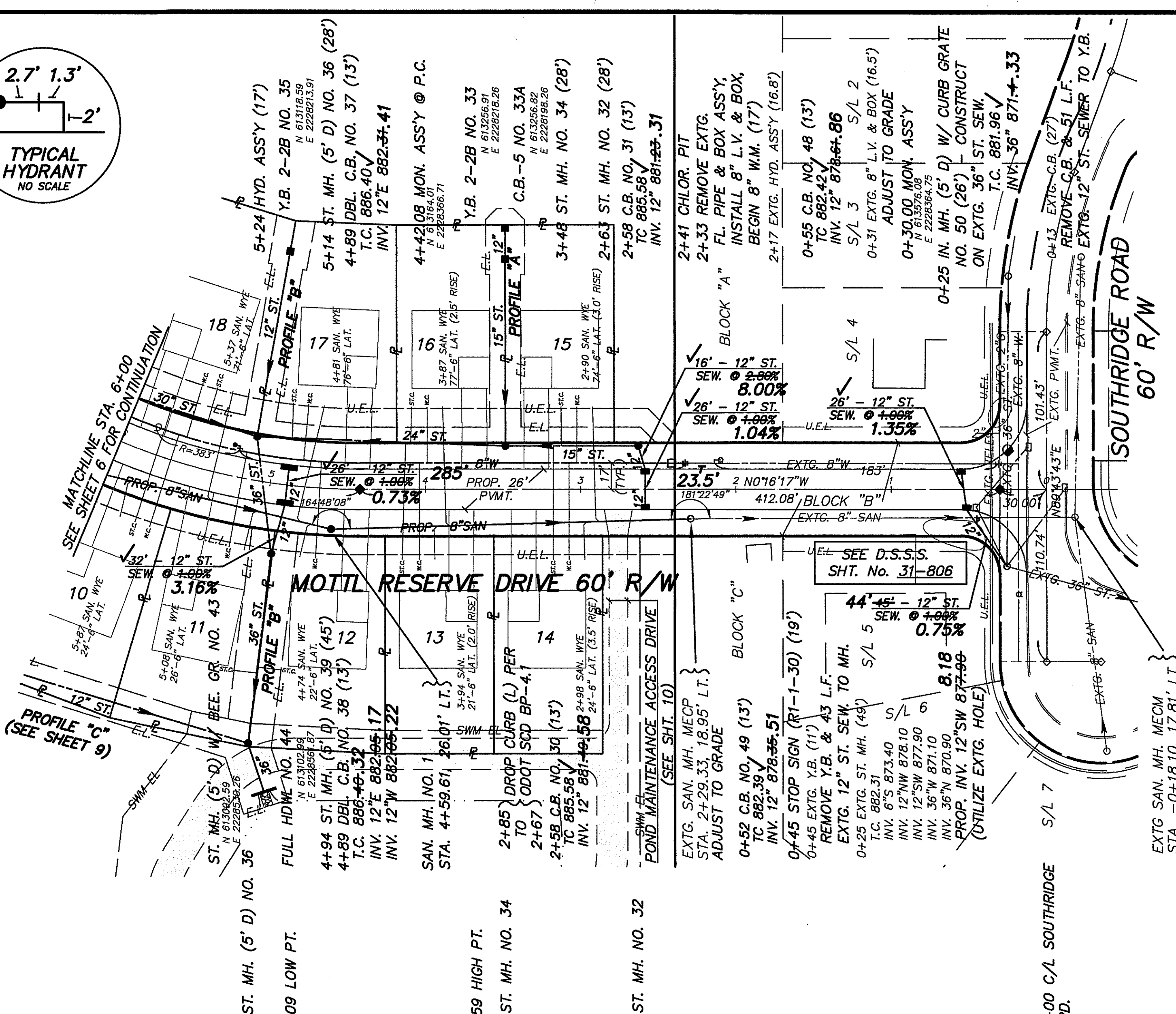
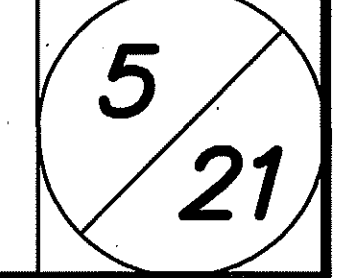
7/18 PER D.S.S.S.
7/18 PER S.C.E.
7/18 PER DEPA WTR.
REVIEW
7/18 PER C.W.D.
9/18 PER S.C.E.
9/19 UTIL. AS-BUILTS

**IMPROVEMENT PLAN AND PROFILES**  
MOTTL RESERVE DRIVE 60' R/W  
MOTTL RESERVE SUBDIVISION  
SAGAMORE HILLS TOWNSHIP  
SUMMIT COUNTY, OHIO

**DONALD G. BOHNING & ASSOCIATES, INC.**  
CIVIL ENGINEERING & SURVEYING  
7979 HUB PARKWAY • VALLEY VIEW, OHIO 44125  
PHONE: (216) 842-1130 FAX: (216) 842-1132  
An Equal Opportunity Employer M/F/V/D/AAE 9/9/2019 6:33 PM



DATE: **MAY, 2018**  
ORDER NO.: **3750-10**



**PROFILE A**

ELEVATION	STATIONING	DESCRIPTION
895	I.C. 887.56	PROP. PROFILE OVER SEWER
890	I.C. 886.56	EXTG. PROFILE OVER SEWER
885	I.C. 890.00	25 YEAR HYDRAULIC GRADE LINE
880	I.C. 883.37	126' ± 15" ST. SEW. @ 2.10%
875	I.C. 883.37	126' ± 15" ST. SEW. @ 2.10%
870	I.C. 883.37	126' ± 15" ST. SEW. @ 2.10%

**MOTTL RESERVE DRIVE**

ELEVATION	STATIONING	DESCRIPTION
905	887.87	PROP. PROFILE OVER SEWER
900	886.91	EXTG. PROFILE OVER SEWER
895	886.57	EMERGENCY OVERLAND FLOW ROUTE HIGH POINT ELEV. 886.7 (@ U.E.L.)
890	886.41	PROP. BOTTOM OF BASEMENT FOOTER (TYP.)
885	886.40	PROP. BOTTOM OF BASEMENT FOOTER (TYP.)
880	886.51	120' ± 12" ST. SEW. @ 2.72%
875	886.59	122' ± 36" ST. SEW. @ 0.68%
870	886.55	77' ± 36" ST. SEW. @ 0.53%
865	886.99	91'x6'x12' GABION/RENO MATTRESS W/ FILTER
860	887.07	122' ± 36" ST. SEW. @ 0.52%
855	887.13	122' ± 36" ST. SEW. @ 0.52%

**PROFILE B**

ELEVATION	STATIONING	DESCRIPTION
895	887.56	PROP. PROFILE OVER SEWER
890	886.56	EXTG. PROFILE OVER SEWER
885	890.00	25 YEAR HYDRAULIC GRADE LINE
880	883.37	126' ± 15" ST. SEW. @ 2.10%
875	883.37	126' ± 15" ST. SEW. @ 2.10%
870	883.37	126' ± 15" ST. SEW. @ 2.10%