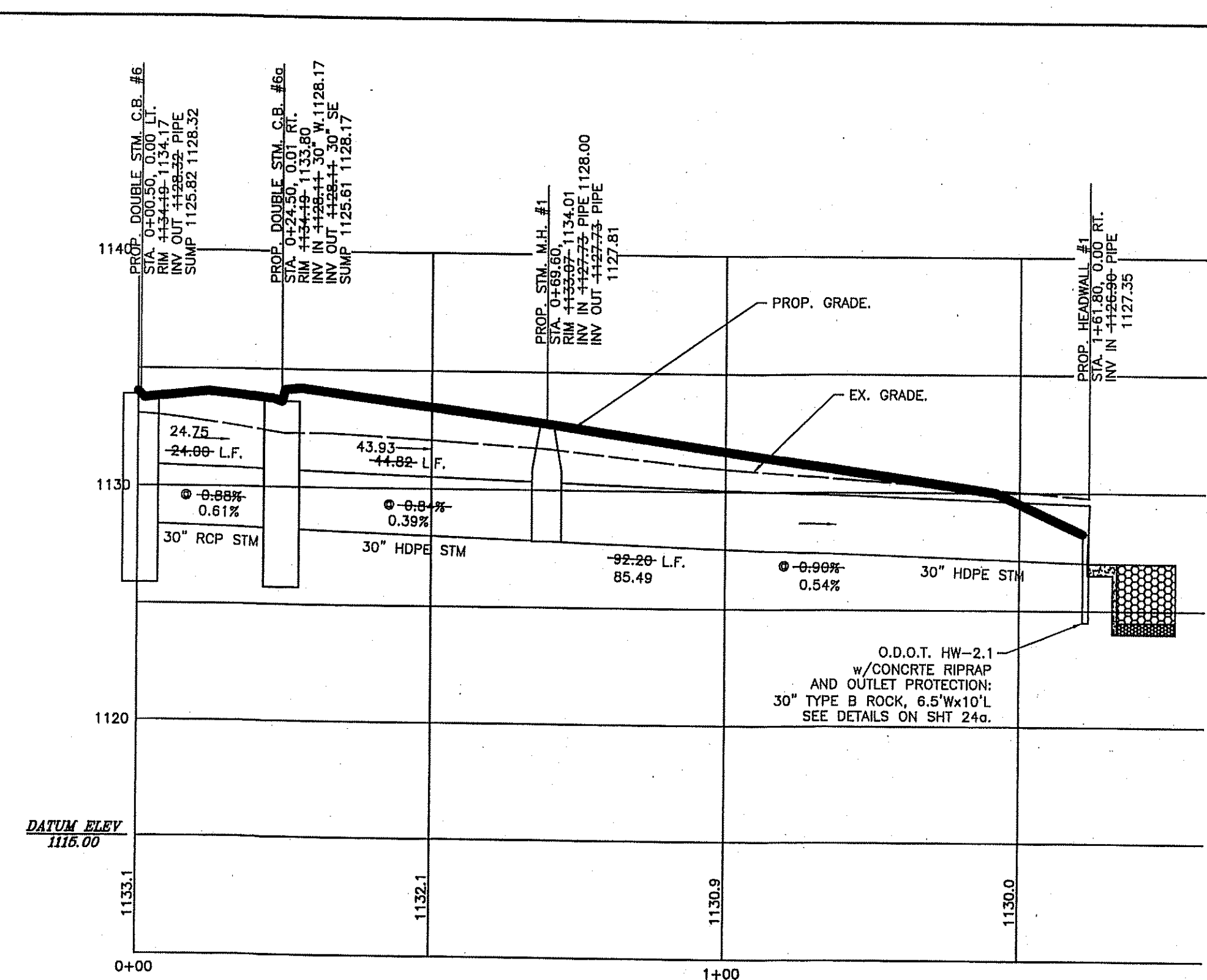
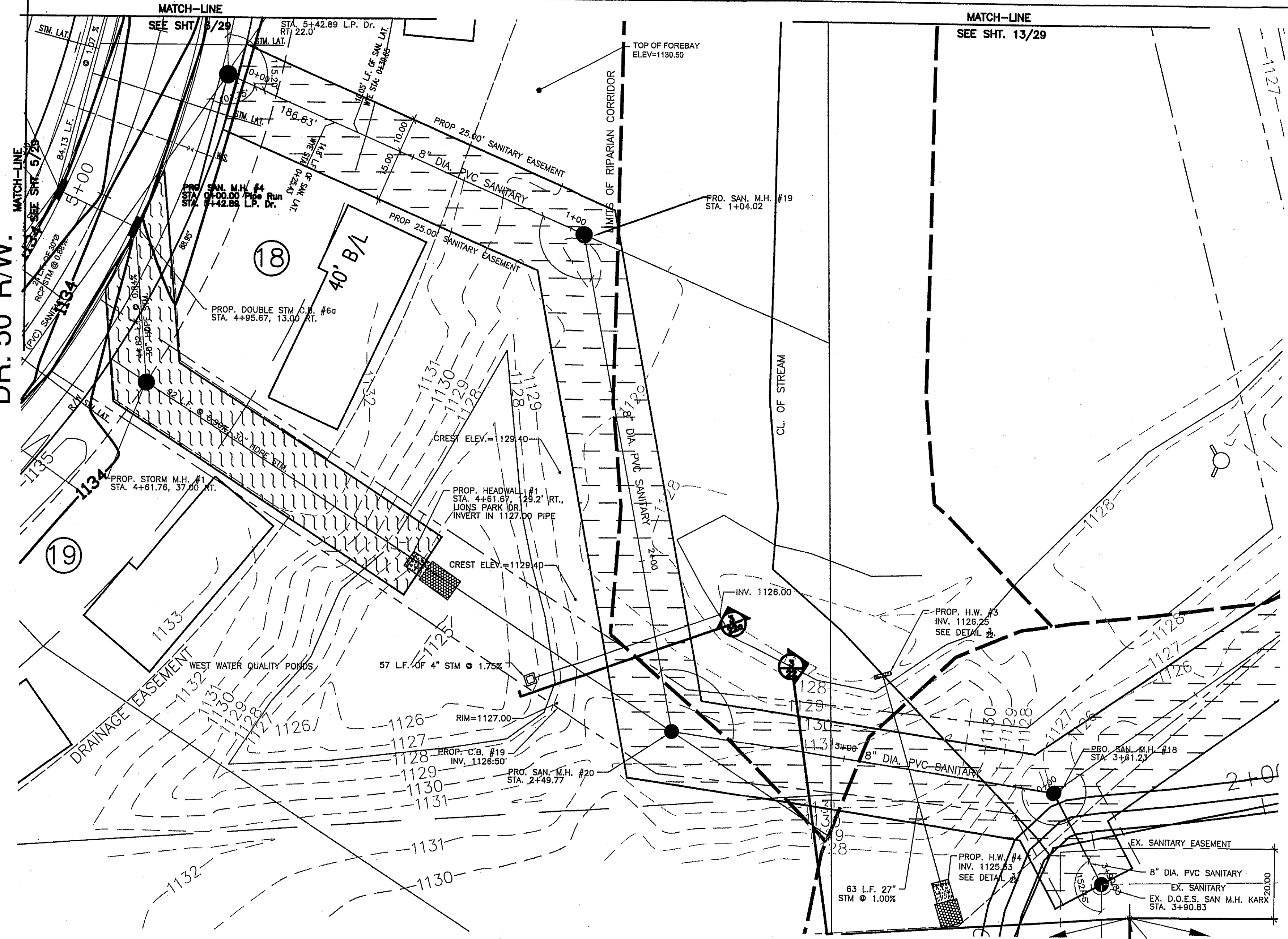
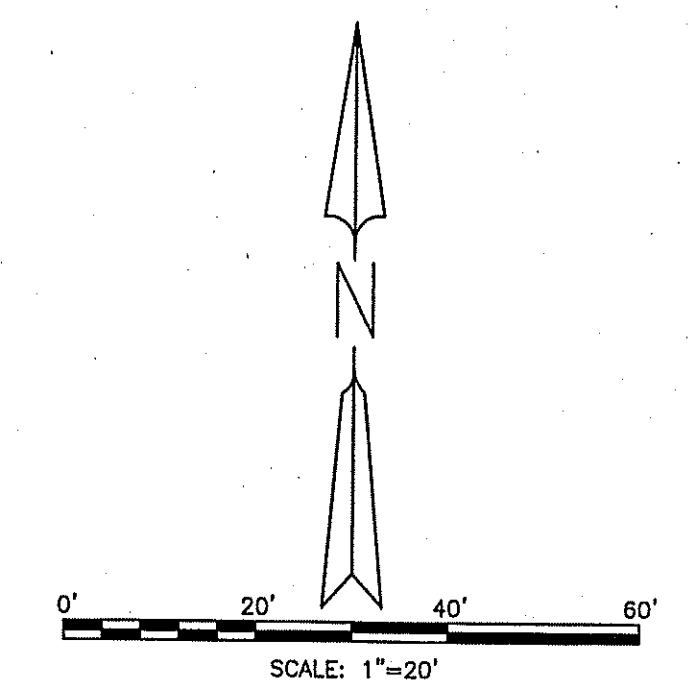


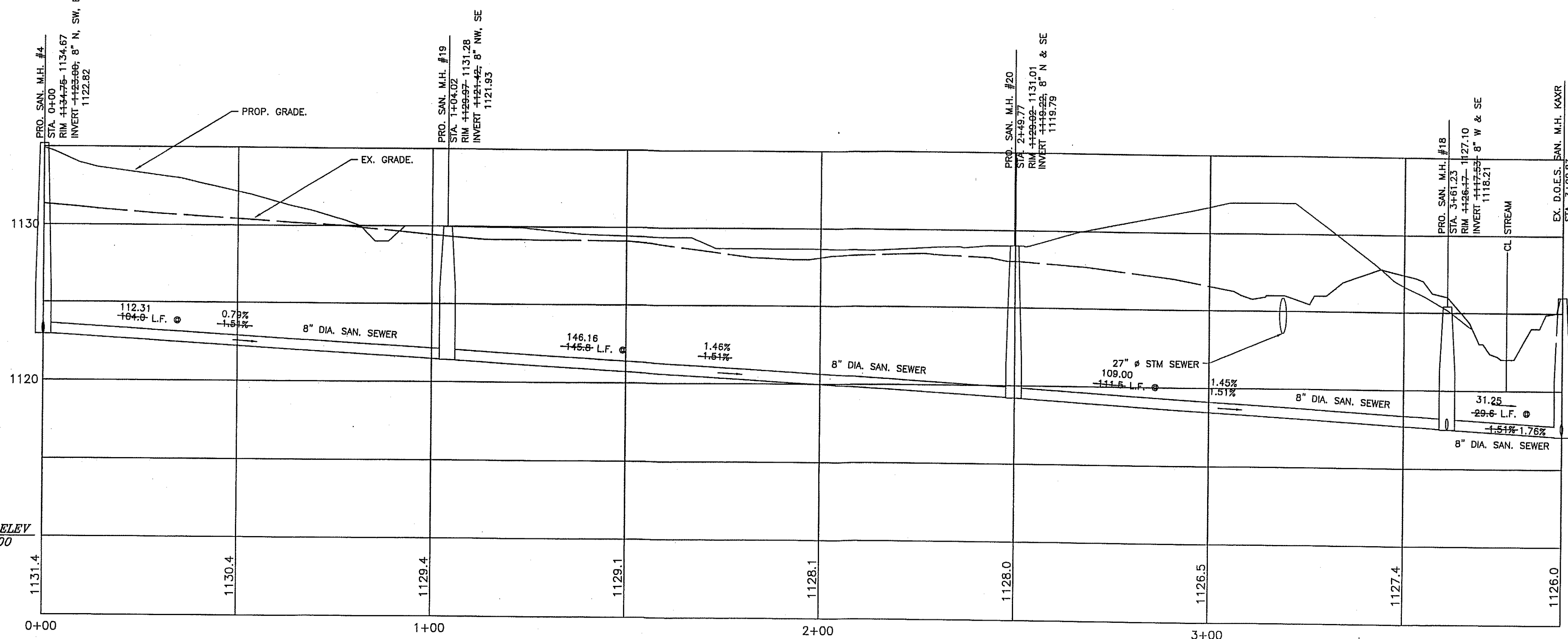
LIONSWOOD DR. 50' R.W.



STORM SEWER PROFILE



FOR CONTINUATION SEE SHT 13/29



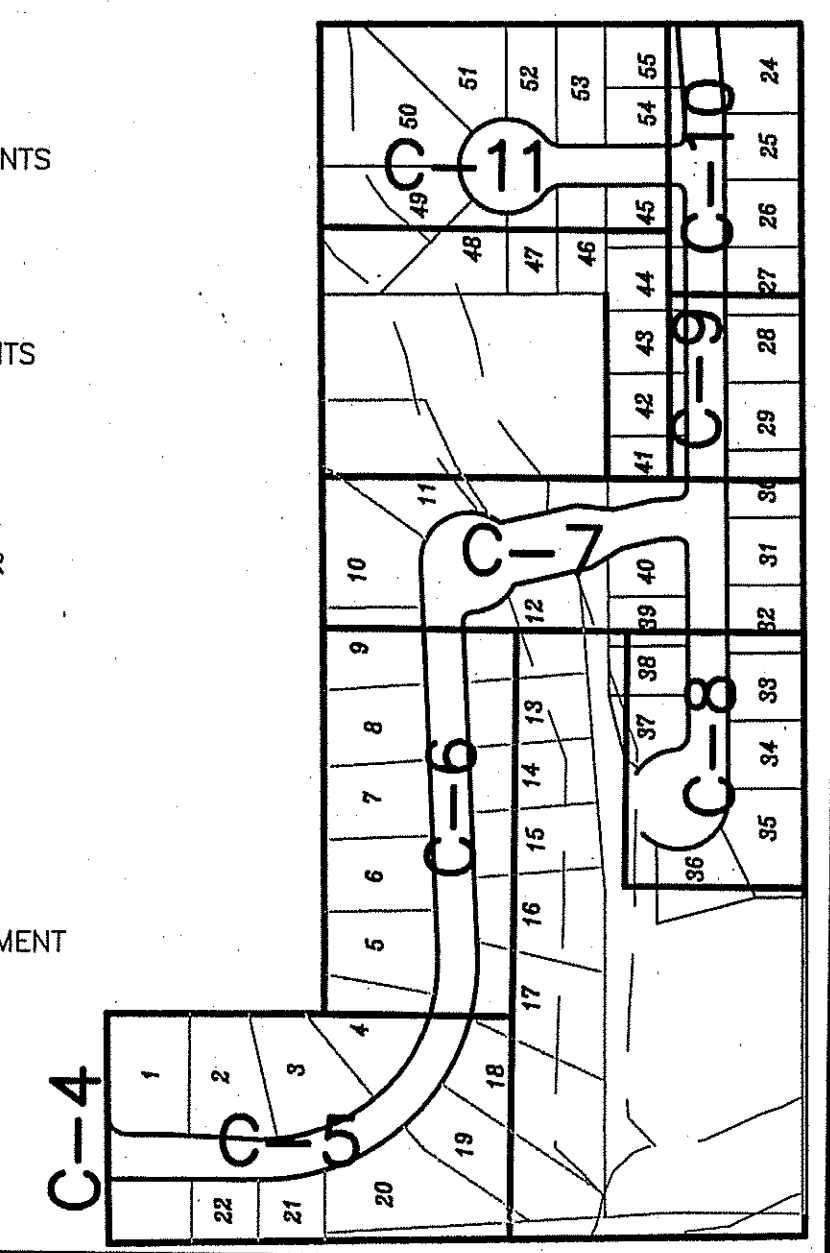
SANITARY SEWER PROFILE

NOTE:
RCP=ODOT ITEM 706.02 &
HDPE = ODOT ITEM 707.33.

- PRIVATE DRAINAGE EASEMENTS
- PUBLIC DRAINAGE EASEMENTS
- 20' PRIVATE STORM SEWER EASEMENT
- 20' PUBLIC STORM SEWER EASEMENT
- 25' SANITARY SEWER EASEMENT

BENCH MARK 1
SURVEY SPIKE NAIL SET IN THE NORTH SIDE OF A POWER POLE LOCATED ON THE EAST SIDE OF MARION AVENUE ACROSS FROM ADDRESS: 332 MARION AVE. ELEVATION = 1145.86'

BENCH MARK 2
"I" IN COREY ON A HYDRANT LOCATED ON THE NORTHEAST CORNER OF HERBERT STREET AND DONOVAN AVENUE IN FRONT OF ADDRESS: 151 DONOVAN AVENUE ELEVATION = 1164.65'



SPAGNUOLO & ASSOCIATES, LLC 3057 WEST MARKET STREET, SUITE 201 • FAIRLAWN, OH 44133 PHONE: (330) 836-6661 • FAX: (330) 836-6115 EMAIL: dsbctf@spagnuoloassoc.com	PLAN & PROFILE WEST SAN. TRUNK	KIDS JABER, LLC LIONS PARK ALLOTMENT & CONDOMINIUMS MARION AVE, SPRINGFIELD TOWNSHIP, OHIO	SCALE HOR: 1" = 20' VER: 1" = 5'	DRAWN: - CHECKED: - DATE: 04-24-15	DATE 4/15/05	REVISION A
	12 29					