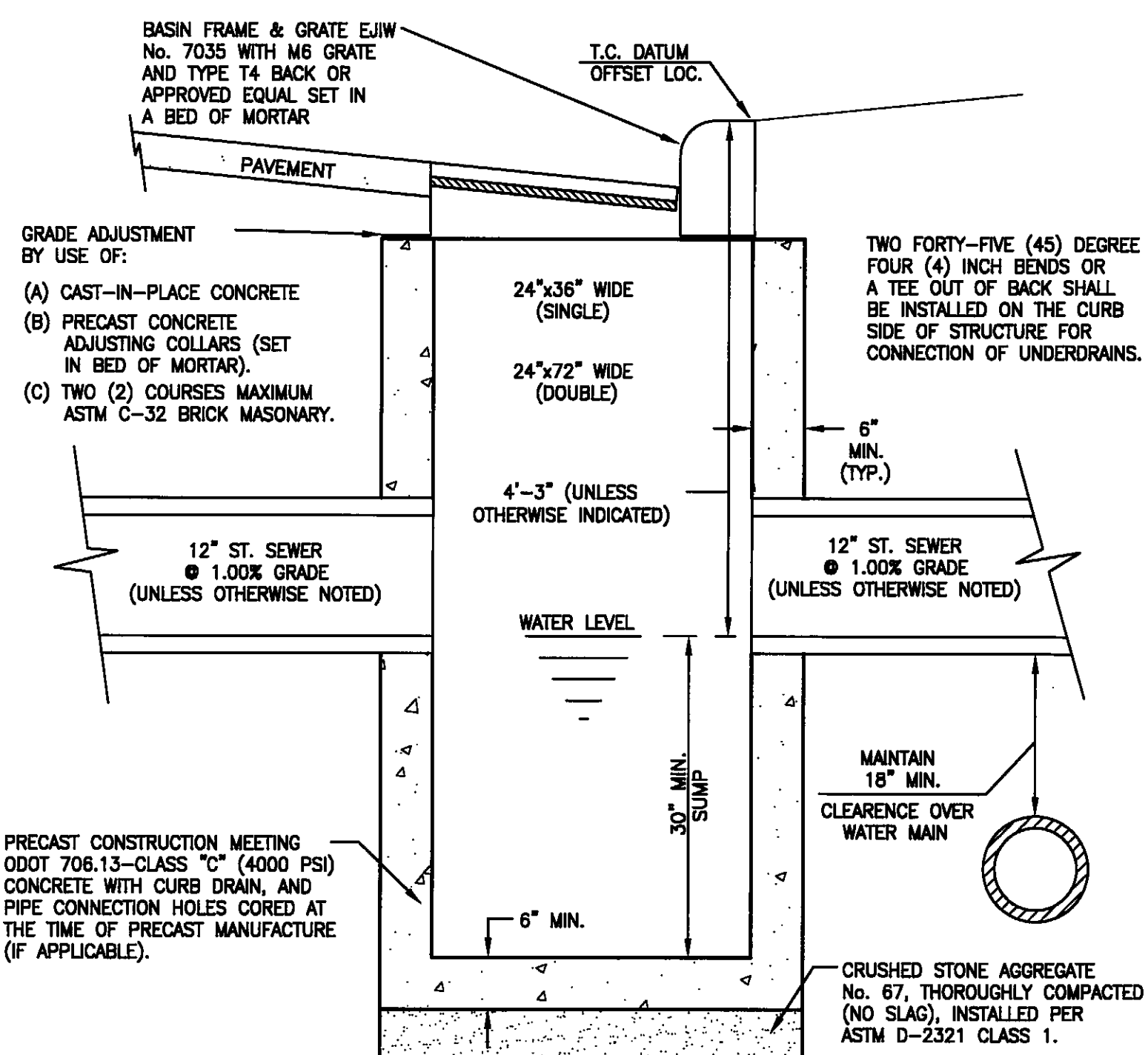
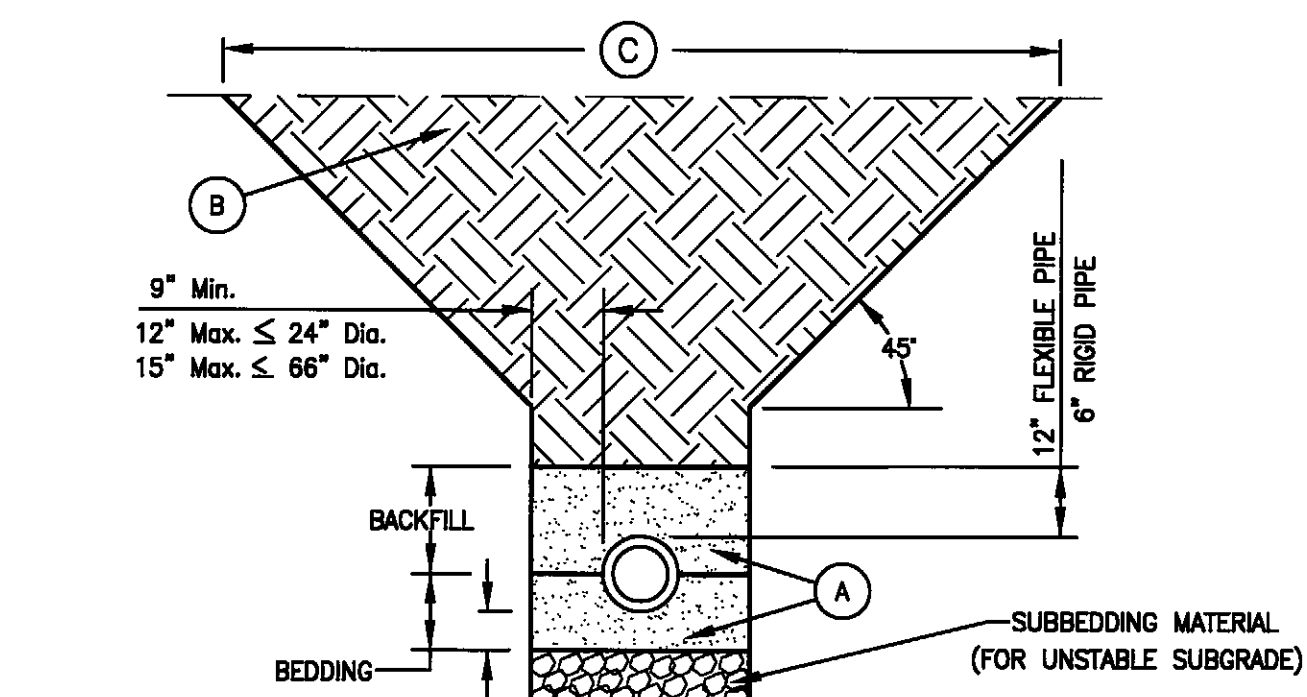


(SUMMIT COUNTY ENGINEER)
INLET BASIN DETAIL
 (2X3 I.B. & 2X6 I.B.)
 NOT SCALE



(SUMMIT COUNTY ENGINEER)
CATCH BASIN DETAIL
 (2X3 C.B. AND 2X6 C.B.)
 NOT SCALE

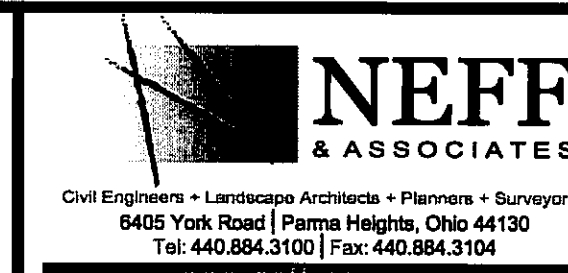


(SUMMIT COUNTY ENGINEER)
UTILITY OR UTILITY CONNECTION TRENCH DETAIL
 NOT SCALE

NOTE:
 (A) CRUSHED STONE AGGREGATE No. 67, THOROUGHLY COMPACTED (NO SLAG) INSTALLED PER ASTM D-2321 CLASS 1.
 (B) TRENCH BACKFILL: INSTALLATION UNDER PAVEMENT AND/OR WITHIN A 45-DEGREE INFLUENCE LINE FROM THE PAVEMENT EDGE SHALL BE INSTALLED IN ACCORDANCE WITH O.D.O.T. ITEM 611 BACKFILL. SLAG MATERIAL AND RECYCLED CONCRETE IS NOT ACCEPTABLE. ADDITIONAL TESTS MAY BE REQUIRED ON THE TYPE OF 304 BACKFILL TO BE USED TO INSURE IT MEETS ODOT SPEC. 703.17. THE COUNTY ENGINEER MAY CONSIDER USE OF OTHER MATERIALS UNDER SPECIAL CONDITIONS. A WRITTEN REQUEST, INCLUDING EVIDENCE THAT THE REPLACEMENT MATERIAL WILL BE SUITABLE FOR BACKFILL MUST BE SUBMITTED FOR REVIEW PRIOR TO ANY APPROVAL BEING ISSUED. REQUIREMENT FOR REPLACEMENT MATERIAL COMPACTION REQUIREMENTS ARE AS FOLLOWS:
 (c) UNDER PROPOSED PAVEMENT - BACKFILLING OF TRENCHES AND FILL MUST BE COMPACTED TO A MINIMUM OF 98% OF THE MATERIAL'S STANDARD PROCTOR MAXIMUM DRY DENSITY WITH THE MATERIAL'S MOISTURE CONTENT ADJUSTED TO WITHIN +1-2% OF THE OPTIMUM PRIOR COMPACTION.
 (b) NOT UNDER PROPOSED PAVEMENT BUT WITHIN A 45 DEGREE INFLUENCE FROM THE EDGE OF PAVEMENT - BACKFILL AND FILL MATERIAL MUST BE COMPACTED TO AT LEAST 95% OF THE MATERIAL'S STANDARD PROCTOR MAXIMUM DRY DENSITY WITH THE MATERIAL'S MOISTURE CONTENT ADJUSTED TO WITHIN +1-2% OF THE OPTIMUM PRIOR TO COMPACTION.
 (c) WITHIN THE R/W BUT NOT UNDER PAVEMENT OR WITHIN THE 45 DEGREE INFLUENCE LINE - BACKFILL OR FILL MATERIAL MUST BE COMPACTED TO AT LEAST 85% OF THE MATERIAL'S STANDARD PROCTOR MAXIMUM DRY DENSITY WITH THE MATERIAL'S MOISTURE CONTENT ADJUSTED TO WITHIN +1-2% OF THE OPTIMUM PRIOR TO COMPACTION.
 (d) IN DEPTHS OVER 8 FEET AND WHEN COMPACTING WITH A HOE-PAC OR EQUAL HYDRAULIC COMPACTOR, A CONTRACTOR MAY INSTALL THE FIRST LIFT UP TO 3 FEET IN DEPTH BEFORE COMPACTING. SUBSEQUENT LIFTS SHALL BE COMPACTED AS PER THE ABOVE. ADDITIONALLY, ODOT ITEM 611 MUST BE ADHERED TO. IF ANY CONFLICTING COMPACTION PERCENTAGES ARE FOUND TO EXIST BETWEEN THOSE INDICATED ABOVE AND ODOT SPECIFICATIONS, THE HIGHER COMPACTION PERCENTAGE SHALL GOVERN.
 THESE REQUIREMENTS ARE TO BE FOLLOWED REGARDLESS OF THE MATERIAL USED TO BACKFILL OR FILL. THESE REQUIREMENTS PERTAIN TO INSTALLATION OF ALL UTILITIES, NOT JUST THE STORM SEWER AND SANITARY SEWER.

JOB NO 12269F	SCALE AS NOTED
DRAWN BY MJD	CHEK'D BY CJO
DWG NAME 12269C-det	DATE SEPTEMBER, 2014

HILLSIDE ESTATES - PHASE 4
STORM SEWER DETAILS
 TOWNSHIP OF COPLEY, COUNTY OF SUMMIT, STATE OF OHIO



REV NO	DATE	DESCRIPTION	BY
3	02/27/15	REV. PER COSE & SUMMIT SWCD	CJO
2	11/17/14	REV. PER COSE,DOES,AKRON WTR.	CJO
1	09/15/14	ORIGINAL SUBMITTAL	CJO

SHEET NO.
C7.2