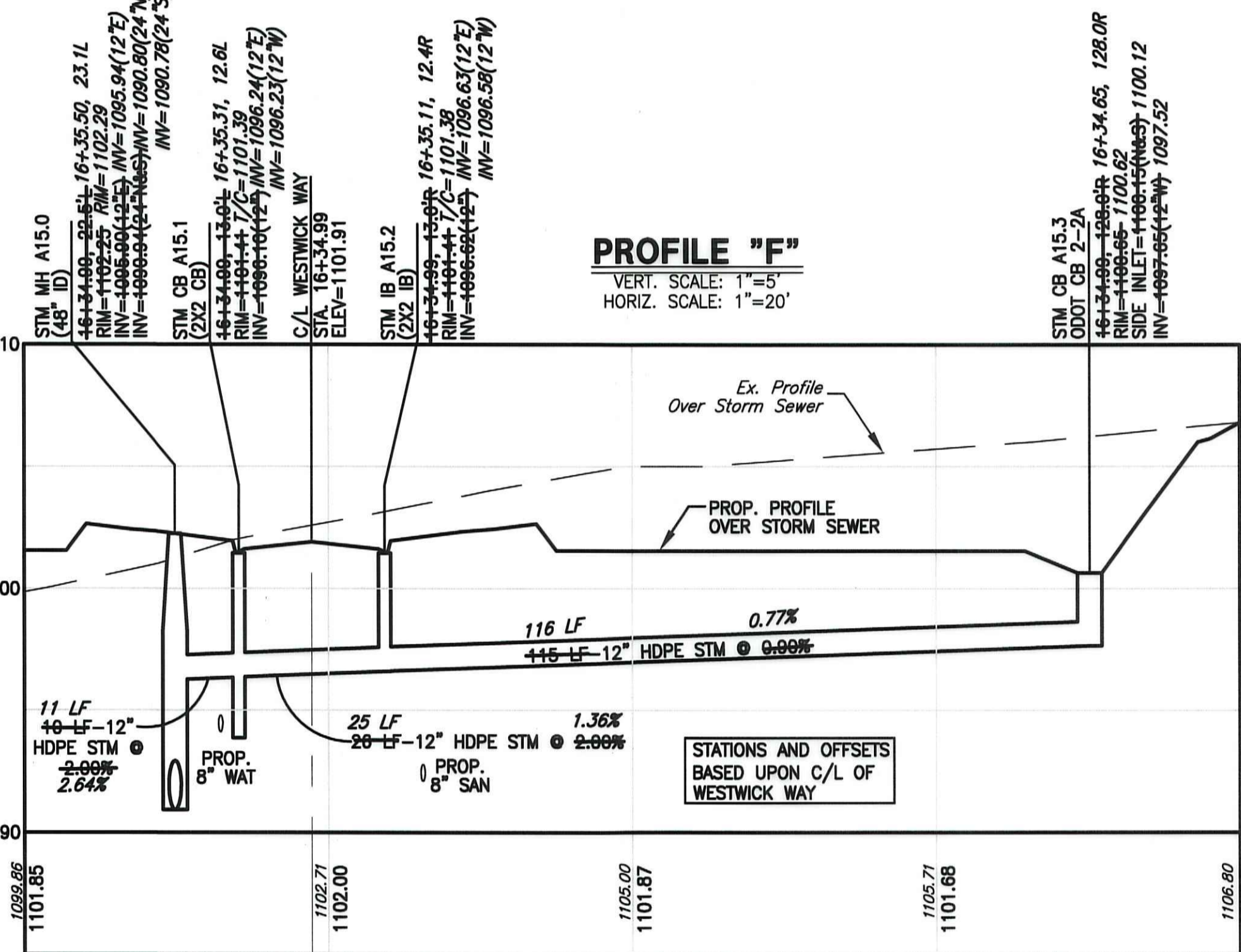
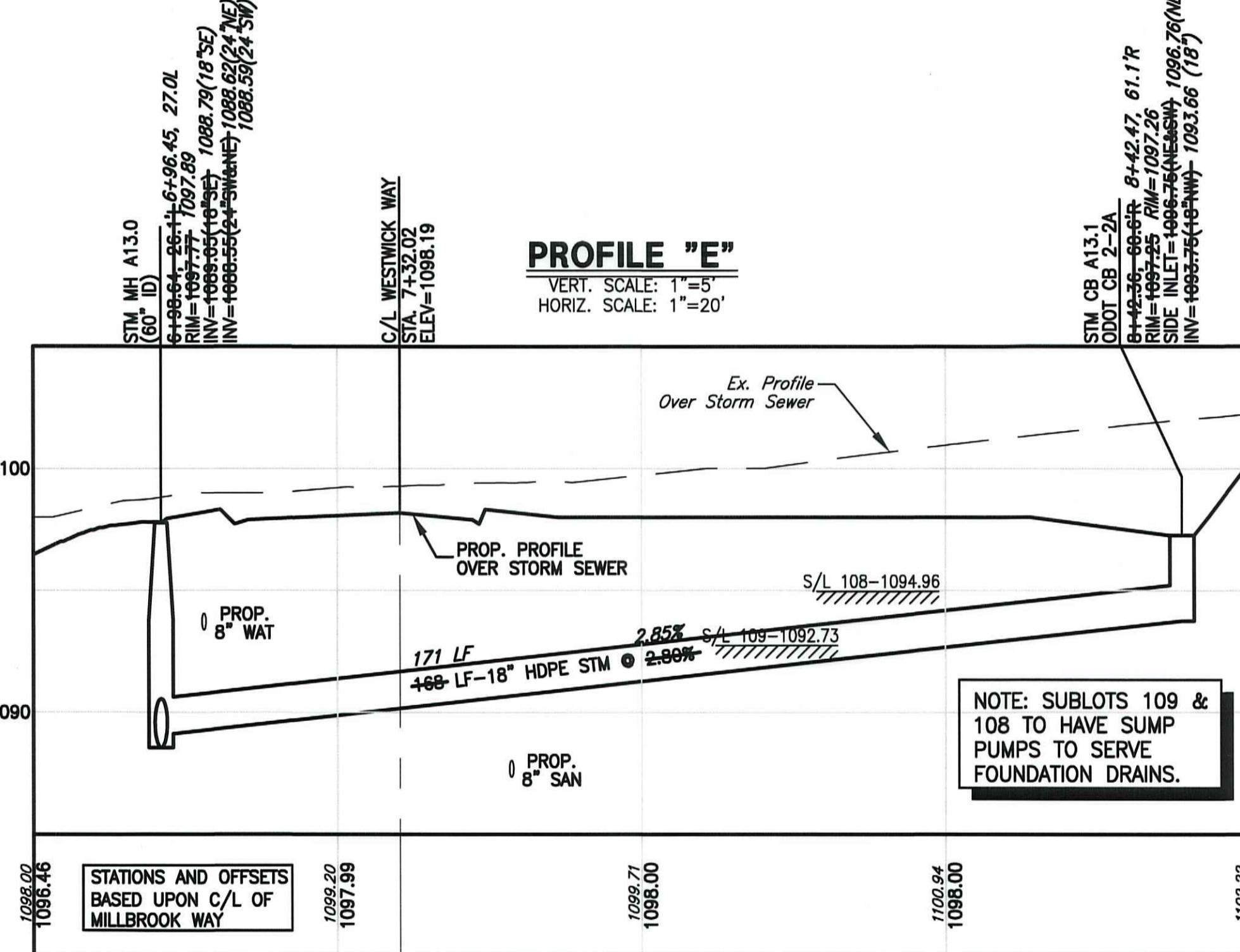
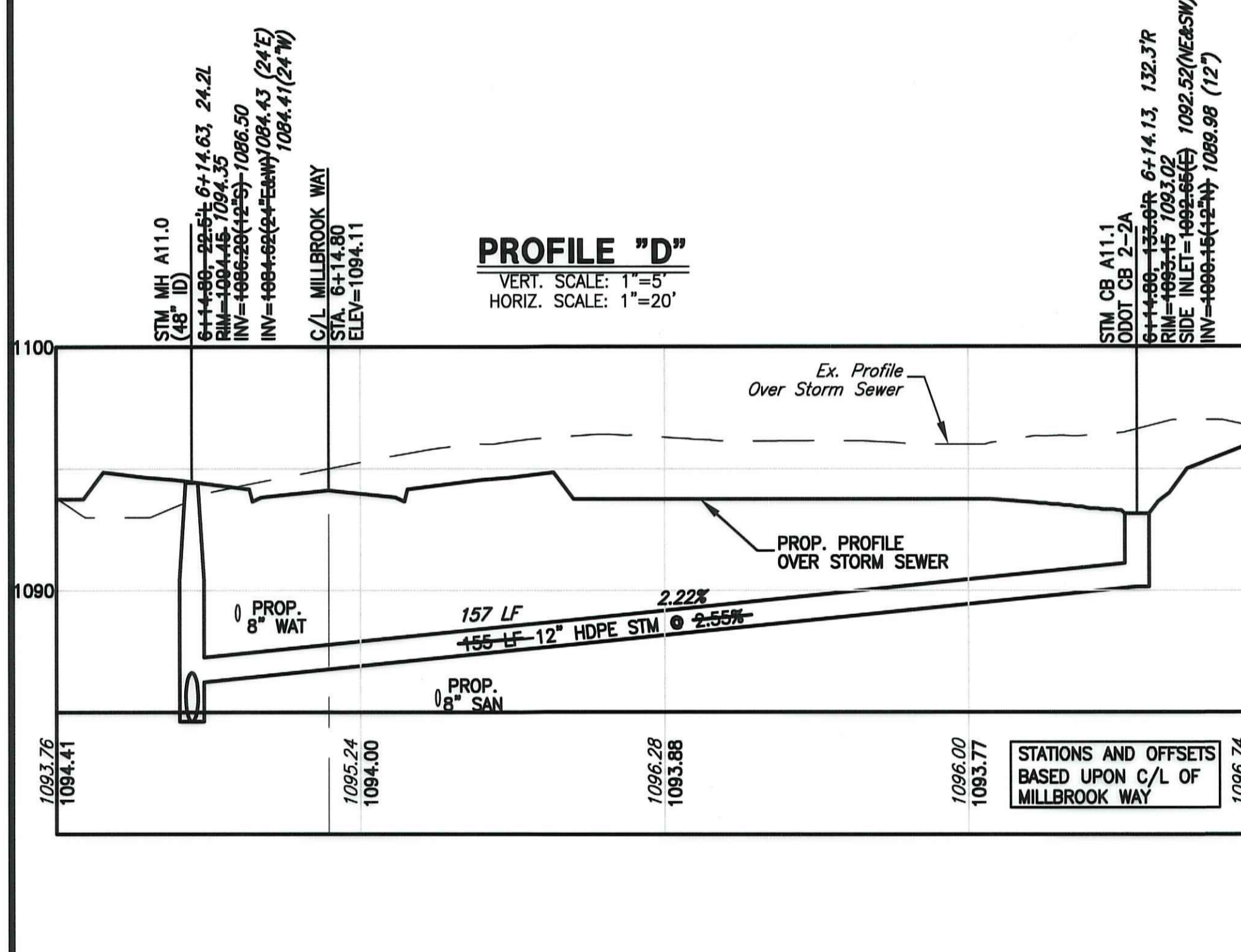
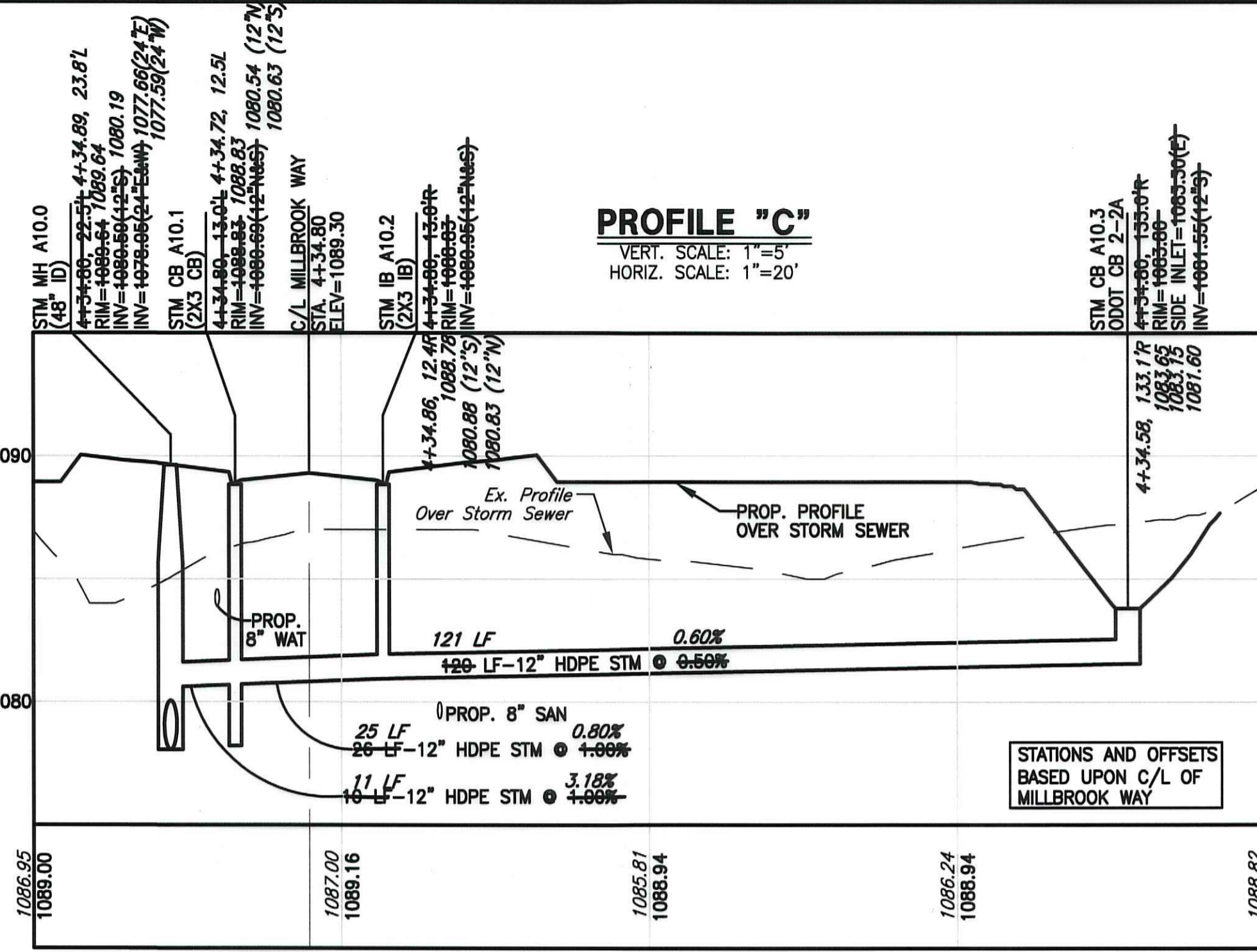
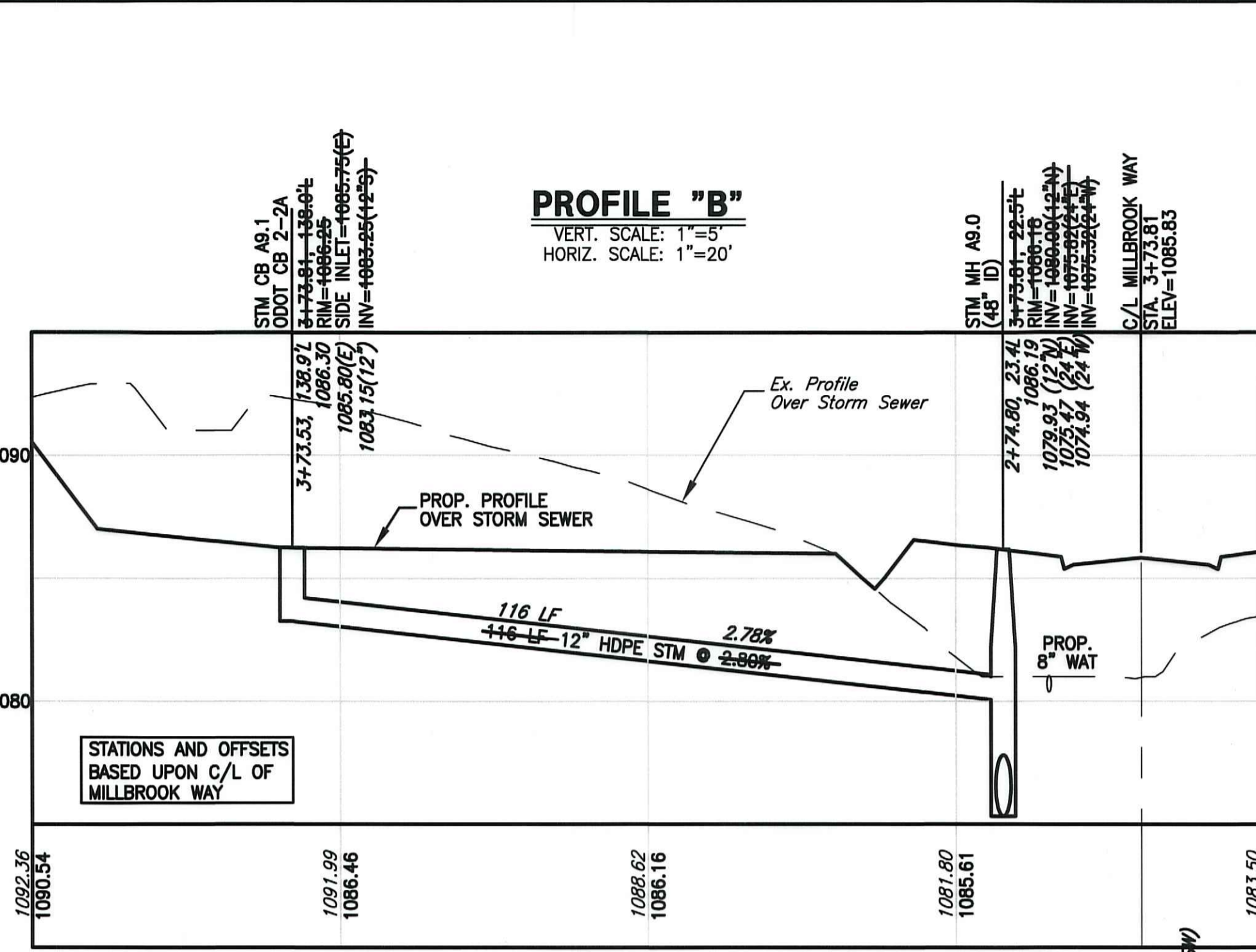
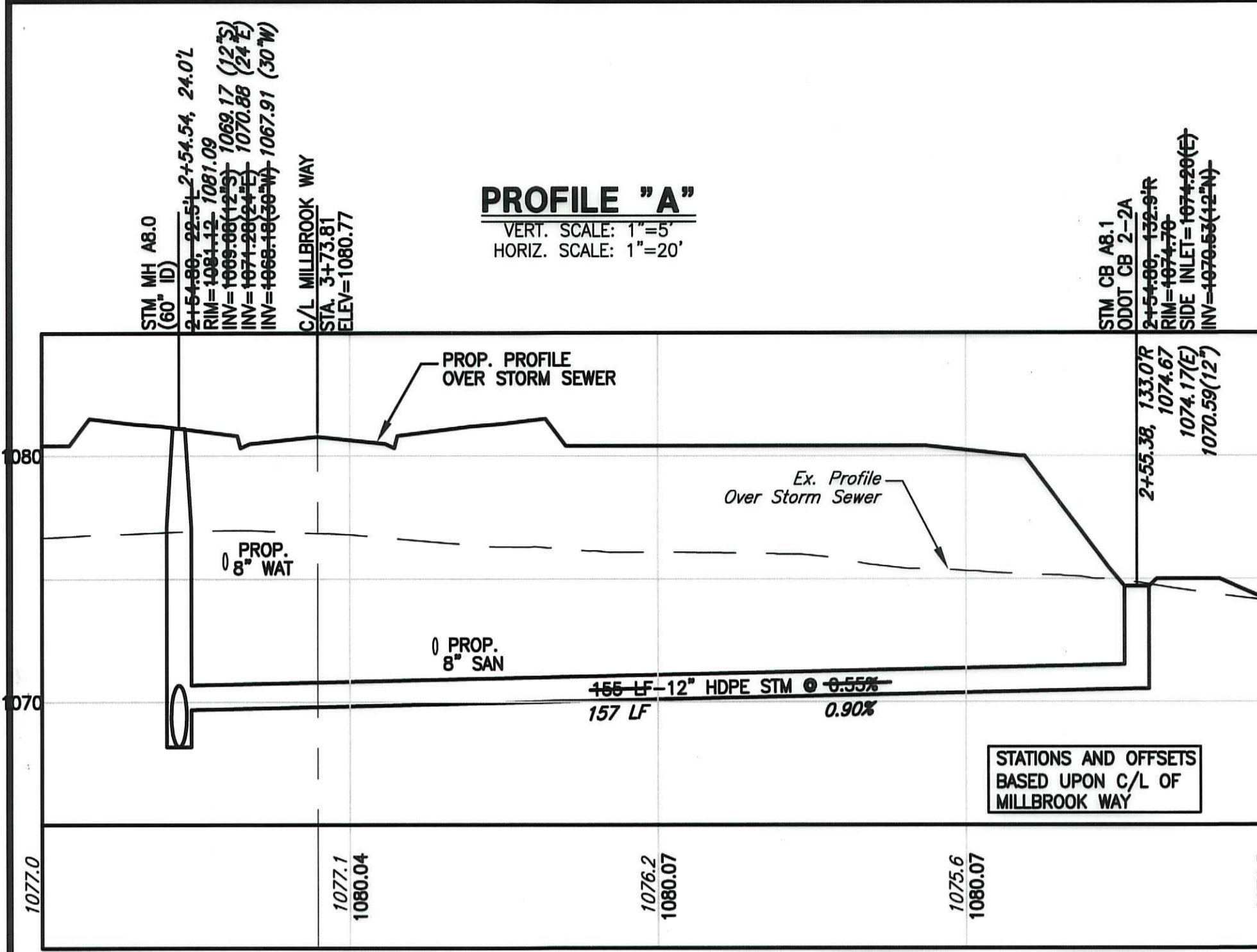
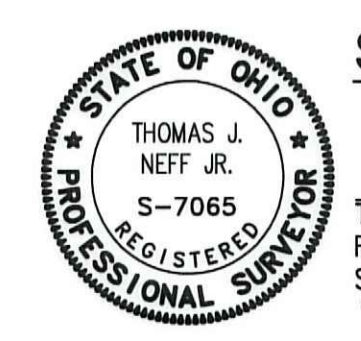


N:\LAND DEVELOPMENT\Proj\12269C\Improvement Plans\Curent Set\As Built Ph. 4\12269C-misc.dwg, 11/9/2017 3:54:13 PM, C:\Users\JN\Documents\Writer.pct



AS-BUILT



SURVEYORS CERTIFICATE:

Thomas J. Neff, Jr.
 Registered Surveyor No. 7065—Ohio
 SURVEY FIELD WORKED PERFORMED SEPT.—NOV. 2017.
 11-03-2017
 Date

STORM SEWER MATERIAL NOTE:
 RCP=ODOT ITEM 706.02
 HDPE=ODOT ITEM 707.33

OHIO E.P.A. NOTES:
 A TEN FEET MIN. HORIZONTAL DISTANCE (OUT TO OUT) MUST BE MAINTAINED BETWEEN WATER LINES AND SANITARY SEWERS.
 AN EIGHTEEN INCH MIN. VERTICAL SEPARATION (OUT TO OUT) MUST BE MAINTAINED BETWEEN WATER LINES AND SANITARY SEWERS AT CROSSINGS.
 A FOUR FEET MIN. HORIZONTAL DISTANCE (OUT TO OUT) MUST BE MAINTAINED BETWEEN WATER LINES AND STORM SEWERS.
 AN EIGHTEEN INCH MIN. VERTICAL SEPARATION (OUT TO OUT) MUST BE MAINTAINED BETWEEN WATER LINES AND STORM SEWERS AT CROSSINGS.

JOB NO	12269F	SCALE	AS NOTED
DRAWN BY	MJD	CHK'D BY	CJO
DWG NAME	12269C-misc	DATE	SEPTEMBER, 2014

HILLSIDE ESTATES - PHASE 4
MISC. PROFILES "A", "B", "C", "D", "E" & "F"
 TOWNSHIP OF COPELY, COUNTY OF SUMMIT, STATE OF OHIO



REV NO	DATE	DESCRIPTION	BY	SHEET NO.
5	11/03/17	UTILITY AS-BUILT	ZPH	C5.7
4	05/27/16	MISCELLANEOUS LABEL REVISIONS	CJO	
3	02/27/15	REV. PER COSE & SUMMIT SWCD	CJO	
2	11/17/14	REV. PER COSE, DOES, AKRON WTR.	CJO	
1	09/15/14	ORIGINAL SUBMITTAL	CJO	