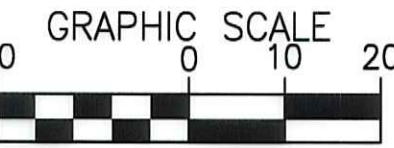


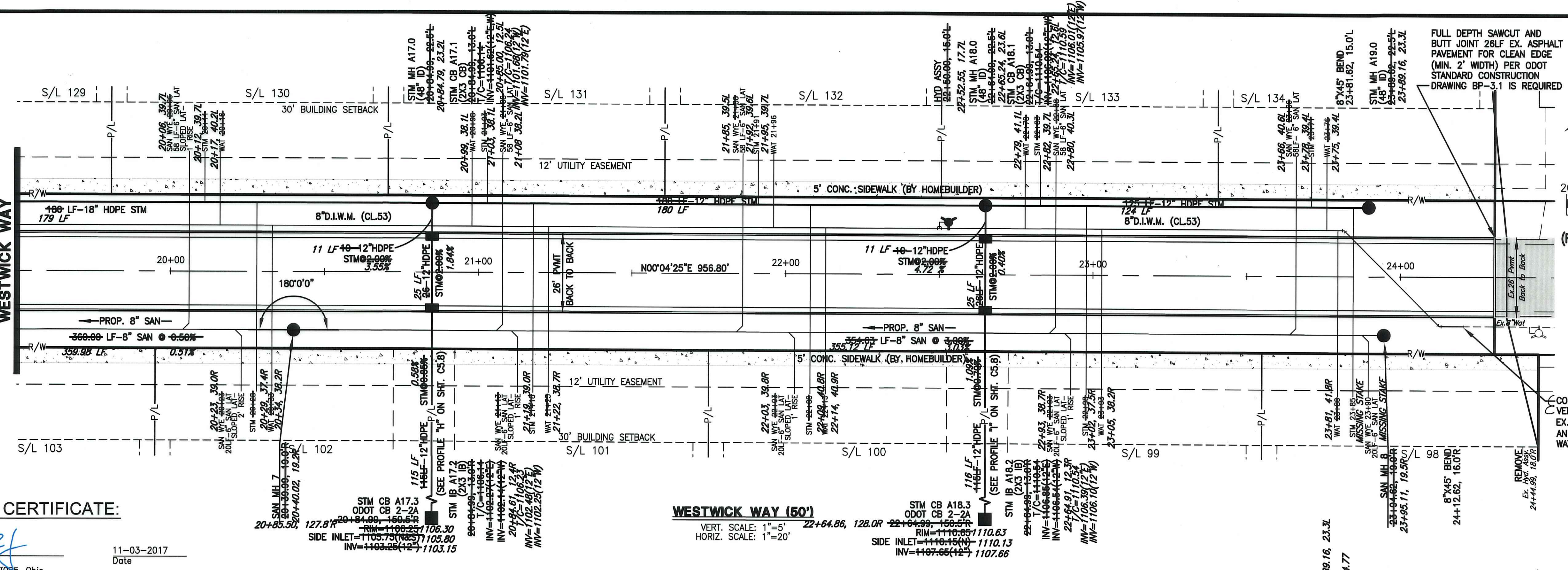
NORTH



1 INCH = 20 FT.  
(FULL SIZE DRAWINGS ONLY)

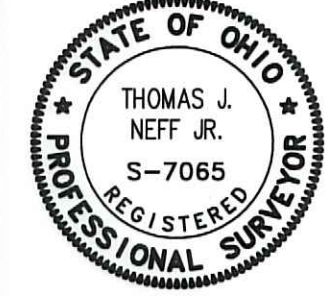
FULL DEPTH SAWCUT AND BUTT JOINT 26LF EX. ASPHALT PAVEMENT FOR CLEAN EDGE (MIN. 2' WIDTH) PER ODOT STANDARD CONSTRUCTION DRAWING BP-3.1 IS REQUIRED

SEE SHEET C5.3  
MATCH STA. 19+50  
WESTWICK WAY



**AS-BUILT**

**SURVEYORS CERTIFICATE:**



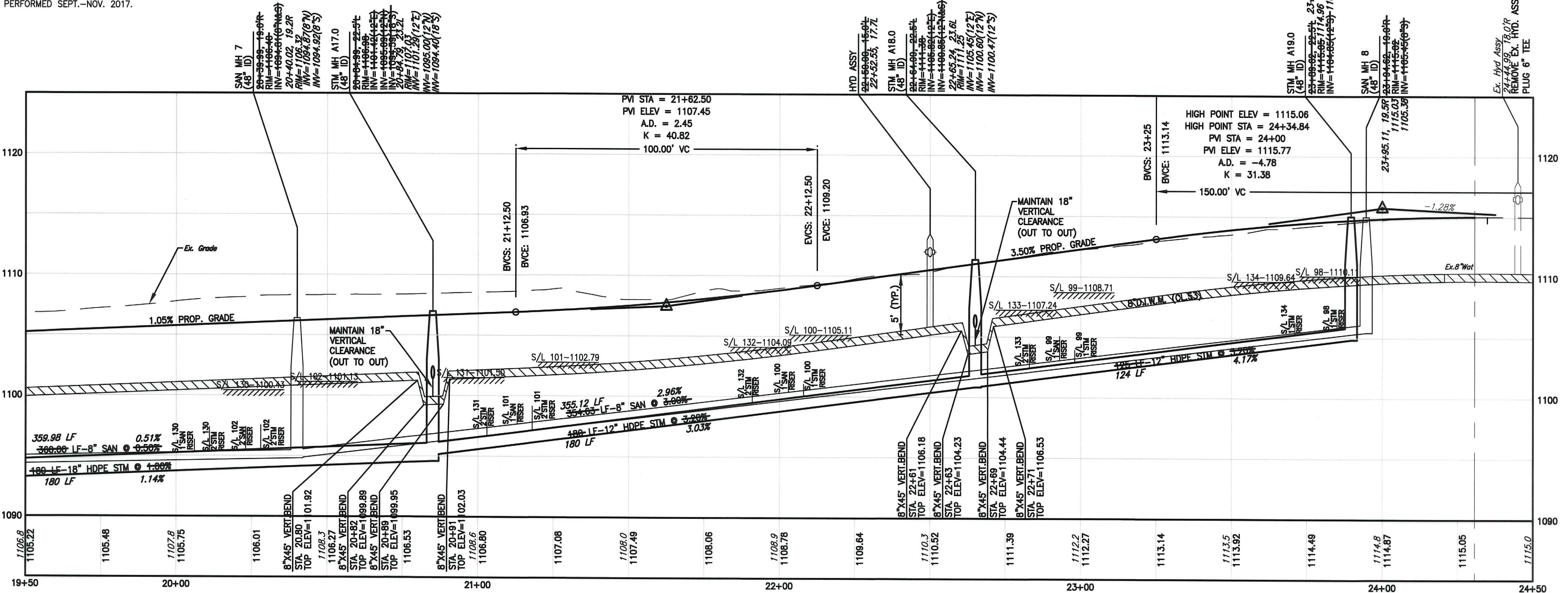
Thomas J. Neff, Jr.  
Registered Surveyor No. 7065-Ohio  
SURVEY FIELD WORKED PERFORMED SEPT.-NOV. 2017.  
Date: 11-03-2017

**WESTWICK WAY (50')**  
VERT. SCALE: 1"=5'  
HORIZ. SCALE: 1"=20'  
22+64.86, 128.00 22+64.86, 128.00  
RIM=1110.63  
SIDE INLET=1110.63 1110.13  
INV=1107.66 1107.66

**STORM SEWER MATERIAL NOTE:**  
RCP=ODOT ITEM 706.02  
HDPE=ODOT ITEM 707.33

**BENCHMARK:**  
U.S.G.S. BENCHMARK CWL-67 1952  
AT N.E. CORNER S.R. 18 BRIDGE  
AT YELLOW CREEK  
ELEVATION=1037.02

**NOTES:**  
S/L XX-XXXX.XX  
REPRESENTS BASEMENT FLOOR ELEVATION BASED ON TWO RISERS FROM GARAGE TO FIRST FLOOR AND 12 BLOCK COURSE BASEMENT. (BOTTOM OF FOOTING TYPICALLY 1 FOOT BELOW BASEMENT FLOOR.)  
STATIONING FOR LATERALS ARE GIVEN AT POINT OF CONNECTION ON MAIN LINE.  
HOME BUILDER IS TO VERIFY ALL AS-BUILT STORM AND SANITARY SEWER LATERAL DEPTHS FOR GRAVITY CONNECTIONS PRIOR TO BEGINNING ANY FOUNDATION WORK.  
THE CURB RAMPS BACK TO THE RIGHT-OF-WAY AND A 20' SECTION OF SIDEWALK IN EACH DIRECTION FROM THE CURB RAMPS SHALL BE INSTALLED BY THE CONTRACTOR DURING SITE IMPROVEMENT CONSTRUCTION. (ENTIRE SIDEWALK TO BE INSTALLED BY CONTRACTOR WHERE NOTED.)  
A TEN FEET MIN. HORIZONTAL DISTANCE (OUT TO OUT) MUST BE MAINTAINED BETWEEN WATER LINES AND SANITARY SEWER.  
AN EIGHTEEN INCH MIN. VERTICAL SEPARATION (OUT TO OUT) MUST BE MAINTAINED BETWEEN WATER LINES AND SANITARY SEWERS AT CROSSINGS.  
A FOUR FEET MIN. HORIZONTAL DISTANCE (OUT TO OUT) MUST BE MAINTAINED BETWEEN WATER LINES AND STORM SEWERS AT CROSSINGS.  
AN EIGHTEEN INCH MIN. VERTICAL SEPARATION (OUT TO OUT) MUST BE MAINTAINED BETWEEN WATER LINES AND STORM SEWERS AT CROSSINGS.



JOB NO	12269F	SCALE	AS NOTED
DRAWN BY	MJD	CHK'D BY	CJO
DWG NAME	12269C-pp5	DATE	SEPTEMBER, 2014

**HILLSIDE ESTATES - PHASE 4  
PLAN & PROFILE - WESTWICK WAY  
STA. 19+50 TO 24+50  
TOWNSHIP OF COPELY, COUNTY OF SUMMIT, STATE OF OHIO**



REV NO	DATE	DESCRIPTION	BY
5	11/03/17	UTILITY AS-BUILT	ZPH
3	02/27/15	REV. PER COSE & SUMMIT SWCD	CJO
2	11/17/14	REV. PER COSE, DOES, AKRON WTR.	CJO
1	09/15/14	ORIGINAL SUBMITTAL	CJO

**SHEET NO.**  
**C5.5**