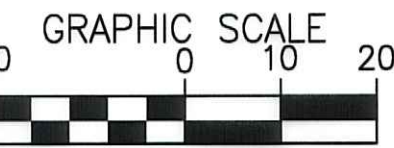
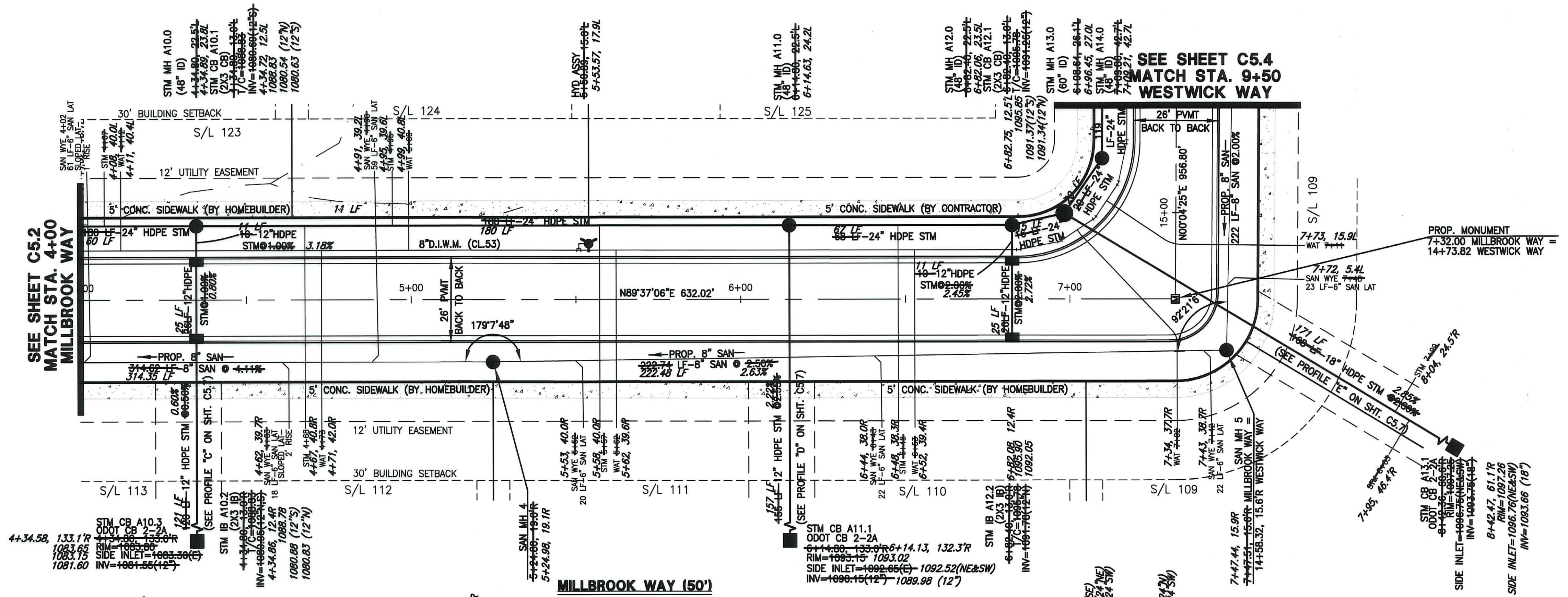


NORTH



1 INCH = 20 FT.
(FULL SIZE DRAWINGS ONLY)

SEE SHEET C5.4
MATCH STA. 9+50
WESTWICK WAY

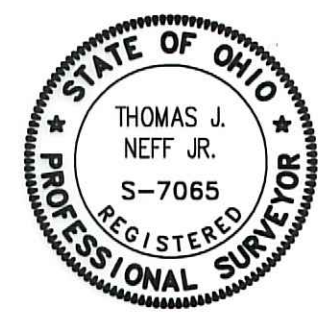


MILLBROOK WAY (50')

VERT. SCALE: 1"=5'
HORIZ. SCALE: 1"=20'

AS-BUILT

SURVEYORS CERTIFICATE:



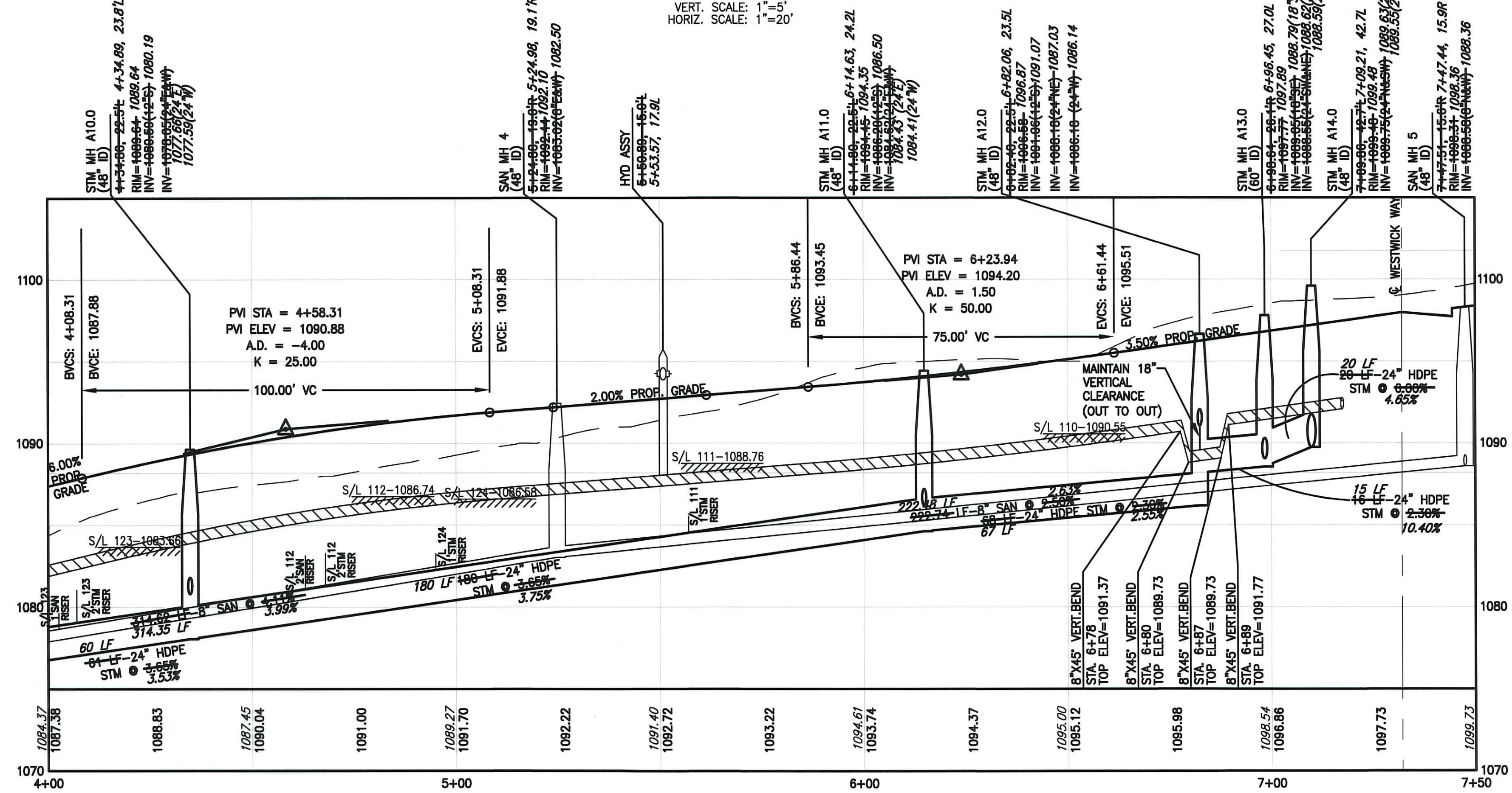
Thomas J. Neff, Jr.
Registered Surveyor No. 7065-Ohio
SURVEY FIELD WORKED PERFORMED SEPT.-NOV. 2017.

11-03-2017
Date

NOTE: SUBLOTS 109 & 108 TO HAVE SUMP PUMPS TO SERVE FOUNDATION DRAINS.

STORM SEWER MATERIAL NOTE:
RCP=ODOT ITEM 706.02
HDPE=ODOT ITEM 707.33

BENCHMARK:
U.S.G.S. BENCHMARK CWL-67 1952
AT N.E. CORNER S.R. 18 BRIDGE
AT YELLOW CREEK
ELEVATION=1037.02



NOTES:
S/L XX-XXXX.XX
REPRESENTS BASEMENT FLOOR ELEVATION FROM GARAGE TO FIRST FLOOR AND 12 BLOCK COURSE BASEMENT. (BOTTOM OF FOOTING TYPICALLY 1 FOOT BELOW BASEMENT FLOOR.)
STATIONING FOR LATERALS ARE GIVEN AT POINT OF CONNECTION ON MAIN LINE.
HOME BUILDER IS TO VERIFY ALL AS-BUILT STORM AND SANITARY SEWER LATERAL DEPTHS FOR GRAVITY CONNECTIONS PRIOR TO BEGINNING ANY FOUNDATION WORK.
THE CURB RAMP BACK TO THE RIGHT-OF-WAY AND A 20' SECTION OF SIDEWALK IN EACH DIRECTION FROM THE CURB RAMP SHALL BE INSTALLED BY THE CONTRACTOR DURING SITE IMPROVEMENT CONSTRUCTION. (ENTIRE SIDEWALK TO BE INSTALLED BY CONTRACTOR WHERE NOTED.)

A TEN FEET MIN. HORIZONTAL DISTANCE (OUT TO OUT) MUST BE MAINTAINED BETWEEN WATER LINES AND SANITARY SEWERS.
AN EIGHTEEN INCH MIN. VERTICAL SEPARATION (OUT TO OUT) MUST BE MAINTAINED BETWEEN WATER LINES AND SANITARY SEWERS AT CROSSINGS.

A FOUR FEET MIN. HORIZONTAL DISTANCE (OUT TO OUT) MUST BE MAINTAINED BETWEEN WATER LINES AND STORM SEWERS AT CROSSINGS.
AN EIGHTEEN INCH MIN. VERTICAL SEPARATION (OUT TO OUT) MUST BE MAINTAINED BETWEEN WATER LINES AND STORM SEWERS AT CROSSINGS.

JOB NO	12269F	SCALE	AS NOTED
DRAWN BY	MJD	CHKD BY	CJO
DWG NAME	12269C-pp3	DATE	SEPTEMBER, 2014

HILLSIDE ESTATES - PHASE 4
PLAN & PROFILE - MILLBROOK WAY
STA. 4+00 TO 7+50
TOWNSHIP OF COPELY, COUNTY OF SUMMIT, STATE OF OHIO



REV NO	DATE	DESCRIPTION	BY
5	11/03/17	UTILITY AS-BUILT	ZPH
4	05/27/16	MISCELLANEOUS LABEL REVISIONS	CJO
3	02/27/15	REV. PER COSE & SUBMIT SWCD	CJO
2	11/17/14	REV. PER COSE, DOES, AKRON WTR.	CJO
1	09/15/14	ORIGINAL SUBMITTAL	CJO

SHEET NO.
C5.3