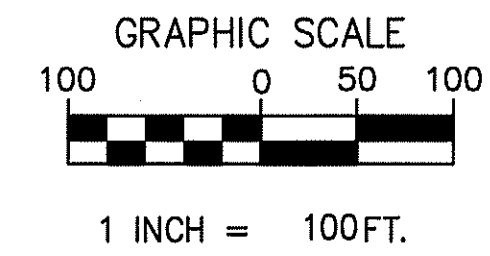
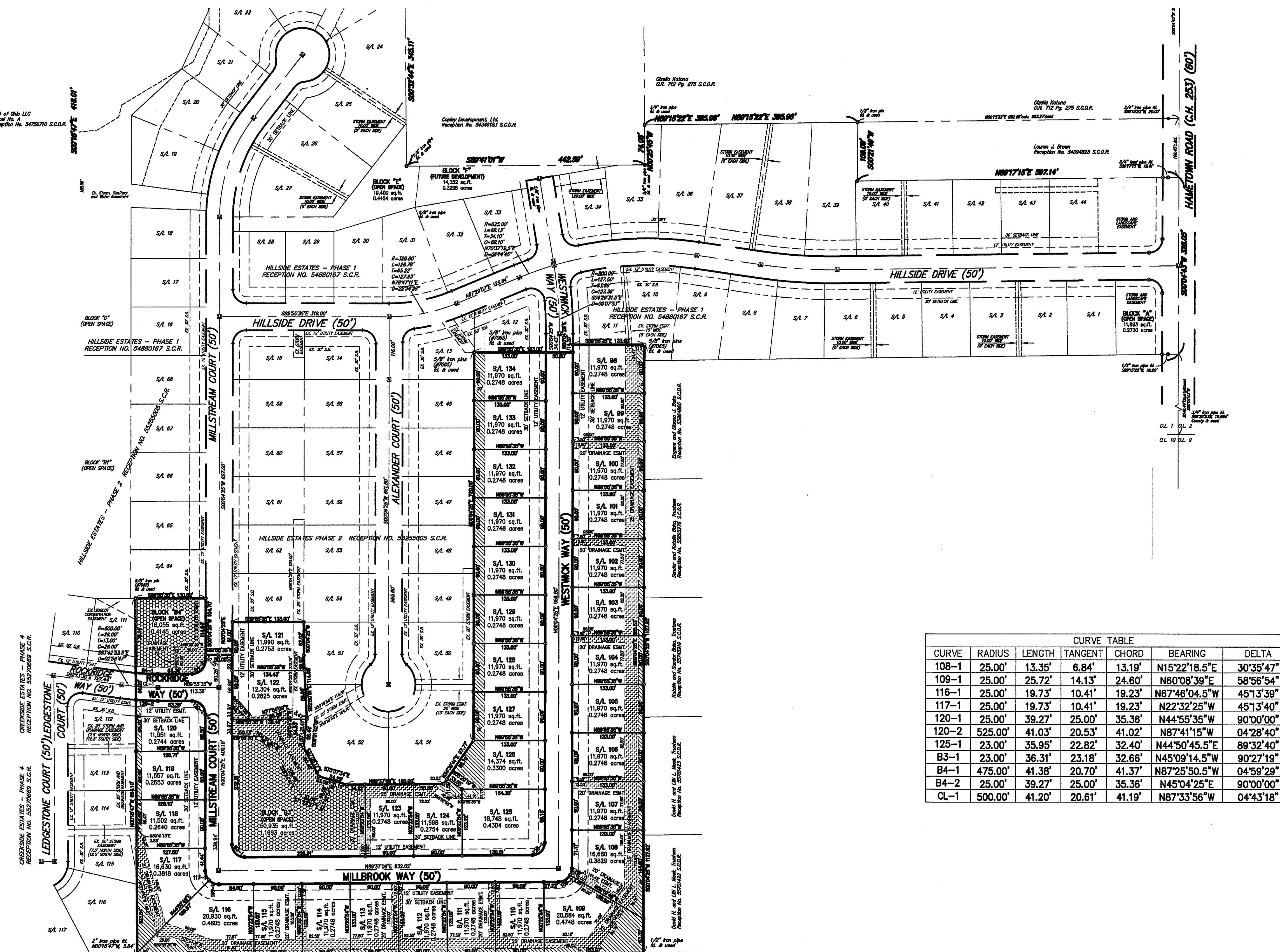


BASIS OF BEARING NAD 83



HILLSIDE ESTATES - PHASE 4
SITE GEOMETRIC PLAN
 TOWNSHIP OF COPLEY, COUNTY OF SUMMIT, STATE OF OHIO



| CURVE TABLE | | | | | | |
|-------------|---------|--------|---------|--------|---------------|-----------|
| CURVE | RADIUS | LENGTH | TANGENT | CHORD | BEARING | DELTA |
| 108-1 | 25.00' | 13.35' | 6.84' | 13.19' | N15°22'18.5"E | 30°35'47" |
| 109-1 | 25.00' | 25.72' | 14.13' | 24.60' | N60°08'39"E | 58°56'54" |
| 116-1 | 25.00' | 19.73' | 10.41' | 19.23' | N67°46'04.5"W | 45°13'39" |
| 117-1 | 25.00' | 19.73' | 10.41' | 19.23' | N22°32'25"W | 45°13'40" |
| 120-1 | 25.00' | 39.27' | 20.00' | 35.36' | N44°55'35"W | 90°00'00" |
| 120-2 | 525.00' | 41.03' | 20.53' | 41.02' | N87°41'15"W | 04°28'40" |
| 125-1 | 23.00' | 35.95' | 22.82' | 32.40' | N44°50'45.5"E | 89°32'40" |
| B3-1 | 23.00' | 36.31' | 23.18' | 32.66' | N45°09'14.5"W | 90°27'19" |
| B4-1 | 475.00' | 41.38' | 20.70' | 41.37' | N87°25'50.5"W | 04°59'29" |
| B4-2 | 25.00' | 39.27' | 20.00' | 35.36' | N45°04'25"E | 90°00'00" |
| CL-1 | 500.00' | 41.20' | 20.61' | 41.19' | N87°33'56"W | 04°43'18" |

| REV NO | DATE | DESCRIPTION |
|--------|----------|-------------------------------------|
| 3 | 02/27/15 | REV. PER COSE & SUMMIT SWCD CJO |
| 2 | 11/17/14 | REV. PER COSE, DOES, AKRON WTR. CJO |
| 1 | 09/15/14 | ORIGINAL SUBMITTAL CJO |

SHEET NO.
C11

NEFF
 & ASSOCIATES
 Civil Engineers & Landscapers Architects - Planners - Surveyors
 6405 York Road Parma Heights, Ohio 44130
 Tel: 440.884.3100 | Fax: 440.884.3104
 www.neff-assoc.com

WESTMONT ESTATES NO. 2 P.B. 69 PG. 28 S.C.P.R.
 James W. and Carlin G. & Lisa R. White and Irene A. Zandrea and Jeffrey A. and Lawrence and