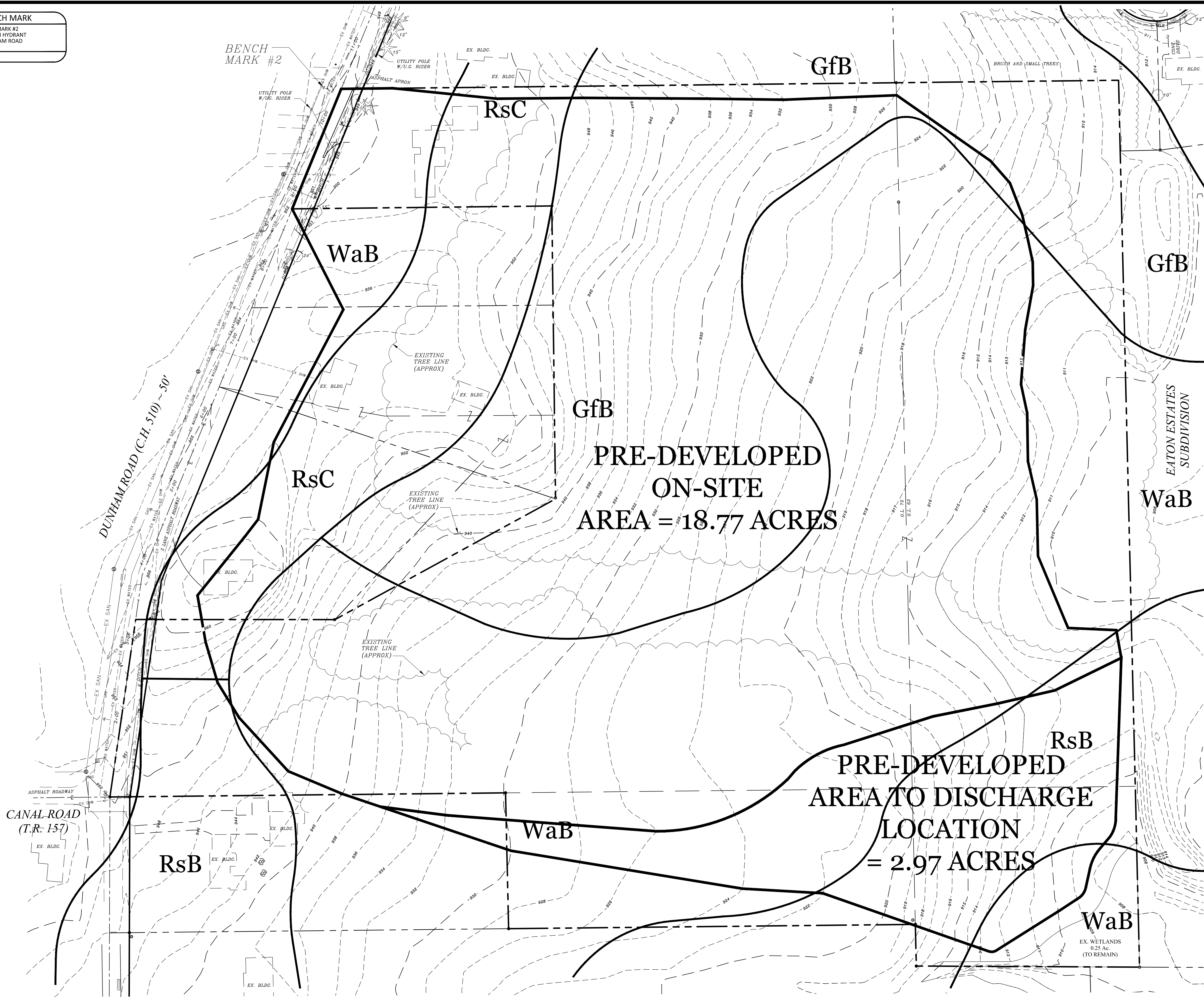


**SITE BENCH MARK**  
 BENCH MARK #1  
 TOP NUT ON HYDRANT  
 IN CUL-DE-SAC ON ALLIANCE DRIVE  
 (SEE SHEET C103)  
 ELEVATION = 911.93

**SITE BENCH MARK**  
 BENCH MARK #2  
 TOP NUT ON HYDRANT  
 ON DUNHAM ROAD  
 ELEVATION = 952.66

ITALICS TEXT REPRESENTS EXISTING CONDITION  
 NON-ITALICS TEXT REPRESENTS PROPOSED CONDITION



**PRE-DEVELOPED DRAINAGE MAP & SOILS MAP**

PRE-DEVELOPED: AREA = 18.77 AC., CN = 76, TC = 51.4 MIN.  
 PRE-DEVELOPED TO DISCHARGE LOCATION: AREA = 2.97 AC., CN = 82, TC = 32.9 MIN.

GfB = Glenford silt loam, 2 to 6% slopes  
 RsB = Rittman silt loam, 2 to 6% slopes  
 RsC = Rittman silt loam, 6 to 12% slopes  
 WaB = Wadsworth silt loam, 2 to 6% slopes

**WEBER ENGINEERING SERVICES**  
*Where Strong Relationships & Superior Service Guide Your Project*  
 2555 Hartville Rd., Suite B  
 Rootstown, OH 44272  
 www.WeberEngineeringServices.com  
 330-329-2037  
 matt@webercivil.com

STATE OF OHIO  
 MATTHEW WEBER  
 61709 REGISTERED PROFESSIONAL ENGINEER  
 Reg. No.: 61709

**Dunham Land Properties llc.**  
 756 Ravenhill Drive  
 Sagamore Hills, OH 44067  
 Paul Karnow  
 Ph.# (330) 468-2892  
 Fax# (330) 468-2892

HIDDEN RIDGE  
 RESIDENTIAL SUBDIVISION  
 DUNHAM ROAD

Issue Date
01-25-2016
02-05-2016
02-11-2016
02-25-2016
06-01-2016
06-29-2016
08-10-2016
09-08-2016
10-03-2016
10-10-2016
03-27-2017

**SWP3  
 DETAILS**

**C108A**  
 Project No. 2014-226

**OHIO Utilities Protection SERVICE**  
*Call Before You Dig*  
 800-362-2764 or 8-1-1  
 www.oups.org

**OGPUPS**  
 Ohio Oil & Gas Producers Underground Protection Service  
 800-925-0988 or 8-1-1  
 www.ogpups.org

