

**SITE BENCH MARK**  
 BENCH MARK #1  
 TOP NUT ON HYDRANT  
 IN CUL-DE-SAC ON ALLIANCE DRIVE  
 ELEVATION = 911.93

**SITE BENCH MARK**  
 BENCH MARK #2  
 TOP NUT ON HYDRANT  
 ON DUNHAM ROAD  
 ELEVATION = 952.66

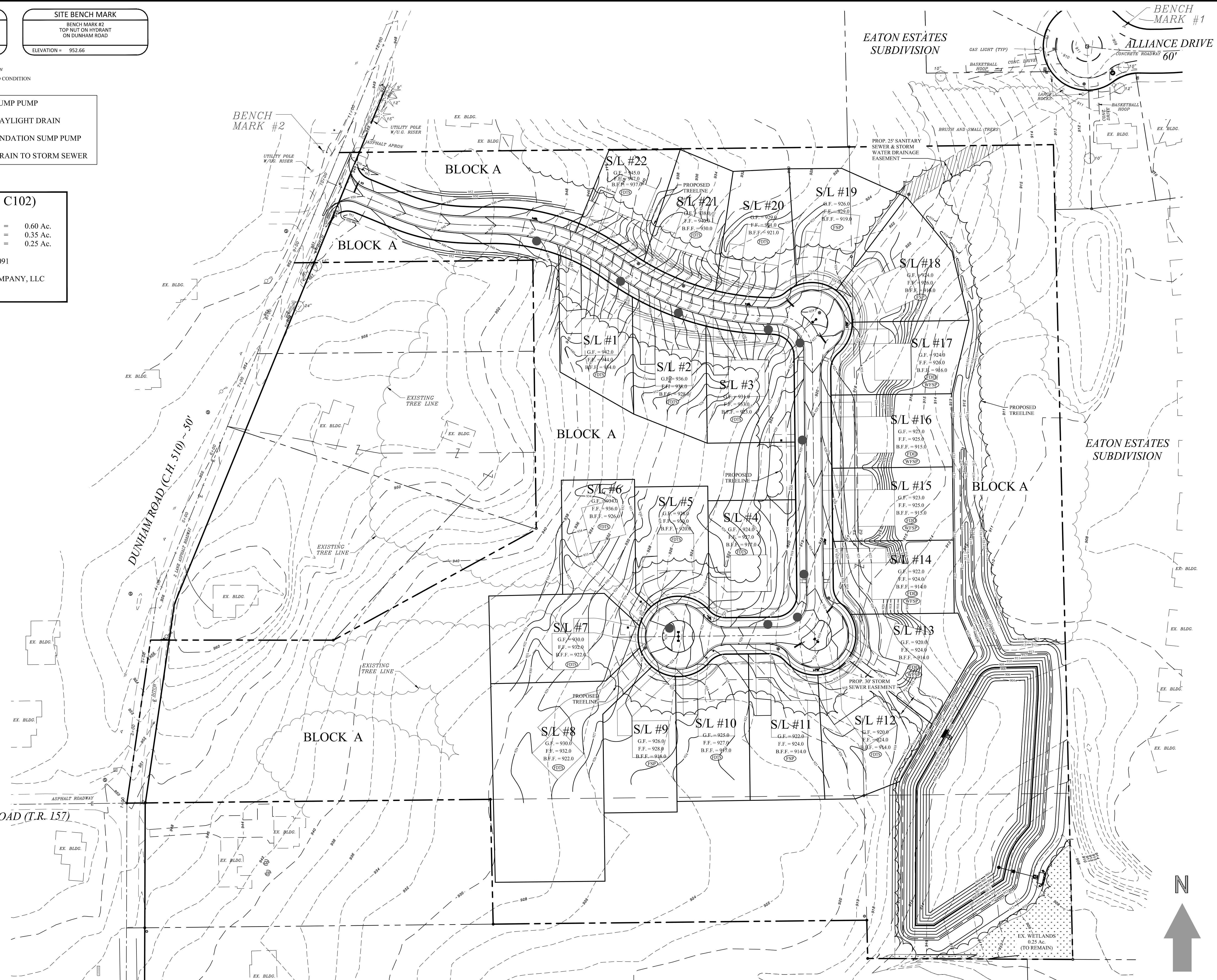
ITALICS TEXT REPRESENTS EXISTING CONDITION  
 NON-ITALICS TEXT REPRESENTS PROPOSED CONDITION

- FSP = FOUNDATION SUMP PUMP
- FDD = FOUNDATION DAYLIGHT DRAIN
- WFSP = WALK OUT FOUNDATION SUMP PUMP
- FDTS = FOUNDATION DRAIN TO STORM SEWER

**WETLANDS (SEE C102)**

TOTAL WETLANDS ON SITE =	0.60 Ac.
WETLANDS TO BE FILLED =	0.35 Ac.
WETLANDS TO REMAIN =	0.25 Ac.

USACE PERMIT NO. 2015-01091  
 PREPARED BY:  
 FLICKINGER WETLAND COMPANY, LLC  
 8530 N. BOYLE PARKWAY  
 TWINSBURG, OH 44087



**WEBER ENGINEERING SERVICES**  
*Where Strong Relationships & Superior Service Guide Your Project*

2555 Hartsville Rd., Suite B  
 Rootstown, OH 44272  
 www.WeberEngineeringServices.com  
 330-329-2037  
 matt@webercivil.com

STATE OF OHIO  
 REGISTERED PROFESSIONAL ENGINEER  
 MATTHEW L. WEBER  
 61709

Reg. No.: 61709

**Dunham Land Properties llc.**

756 Ravenhill Drive  
 Sagamore Hills, Oh 44067  
 Paul Karnow  
 Ph.# (330) 468-2892  
 Fax# (330) 468-2892

HIDDEN RIDGE  
 RESIDENTIAL SUBDIVISION  
 DUNHAM ROAD

Issue Date
01-25-2016
02-05-2016
02-11-2016
02-25-2016
06-01-2016
06-29-2016
08-10-2016
09-08-2016
10-03-2016
10-10-2016
03-27-2017

**OVERALL GRADING PLAN**

**C106**  
 Project No. 2014-226

**OHIO Utilities Protection SERVICE**  
*Call Before You Dig*  
 800-362-2764 or 8-1-1  
 www.oups.org

**OGPUPS**  
 Ohio Oil & Gas Producers Underground Protection Service  
 800-925-0988 or 8-1-1  
 www.ogpups.org

