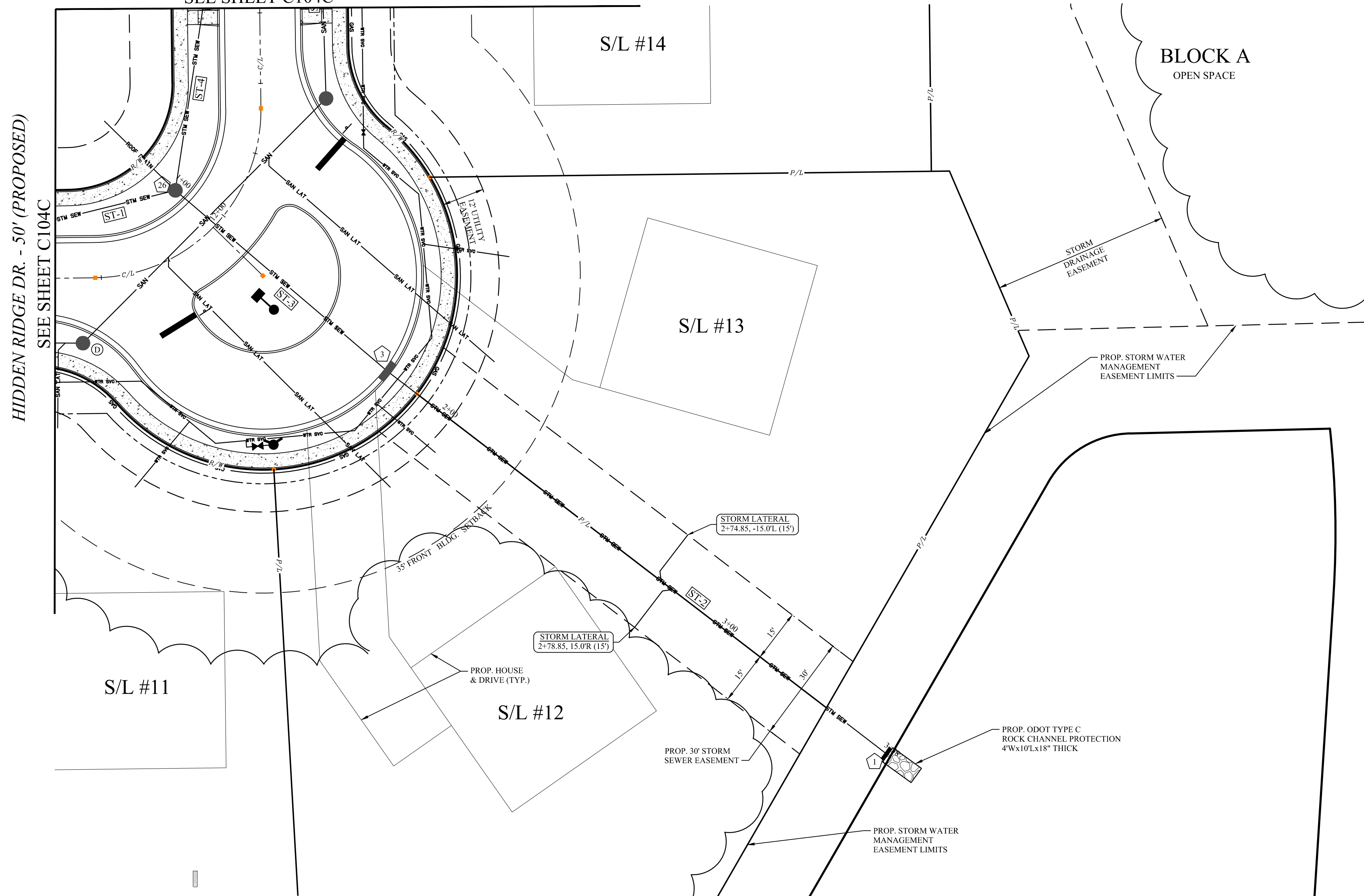


HIDDEN RIDGE DR. - 50' (PROPOSED)
SEE SHEET C104C



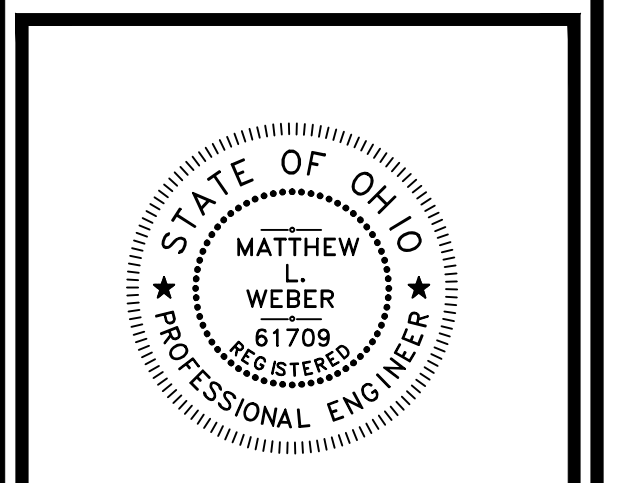
SITE BENCH MARK	SITE BENCH MARK
BENCH MARK #1 TOP NUT ON HYDRANT IN CUL-DE-SAC ON ALLIANCE DRIVE (SEE SHEET C102) ELEVATION = 911.93	BENCH MARK #2 TOP NUT ON HYDRANT ON DUNHAM ROAD (SEE SHEET C102) ELEVATION = 952.66

ITALICS TEXT REPRESENTS EXISTING CONDITION
NON-ITALICS TEXT REPRESENTS PROPOSED CONDITION

- NOTES:**
1. WATER CONNECTIONS SHOWN FOR REFERENCE ONLY AND ARE NOT PART OF THE WATER MAIN APPROVAL. ADDITIONAL PERMITS FOR CONNECTIONS MUST BE OBTAINED FROM C.W.D. PRIOR TO INSTALLATION. CALL THE PERMITS AND SALES UNIT FOR MORE INFORMATION AT (216) 664-2444 EXT. 5203.
 2. SANITARY LATERAL NOTE: ALL SANITARY LATERALS SHALL BE 6" PVC SDR35, LAID AT 1% MINIMUM SLOPE AND ADJUSTED AS NECESSARY TO MAINTAIN REQUIRED CLEARANCES WITH OTHER UTILITIES.
 3. STORM LATERAL NOTE: ALL STORM LATERALS SHALL BE 6" PVC, LAID AT 1% SLOPE UNLESS OTHERWISE NOTED ON THE PLANS.
 4. CURB INLET/CATCH BASIN NOMENCLATURE:
TOP = TOP OF CASTING/TOP OF CURB
OFFSET MEASURED AT TOP/BACK OF CURB
CONTRACTOR SHALL DEFLECT W.M. & WATER SERVICES AS NECESSARY TO MAINTAIN 18" MIN. CLEARANCE BETWEEN WATERLINE & SEWERS.

WEBER ENGINEERING SERVICES
Where Strong Relationships & Superior Service Guide Your Project

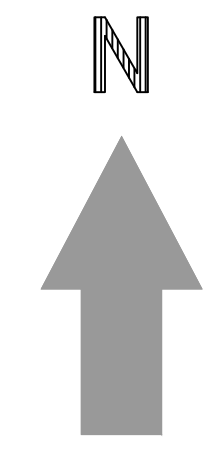
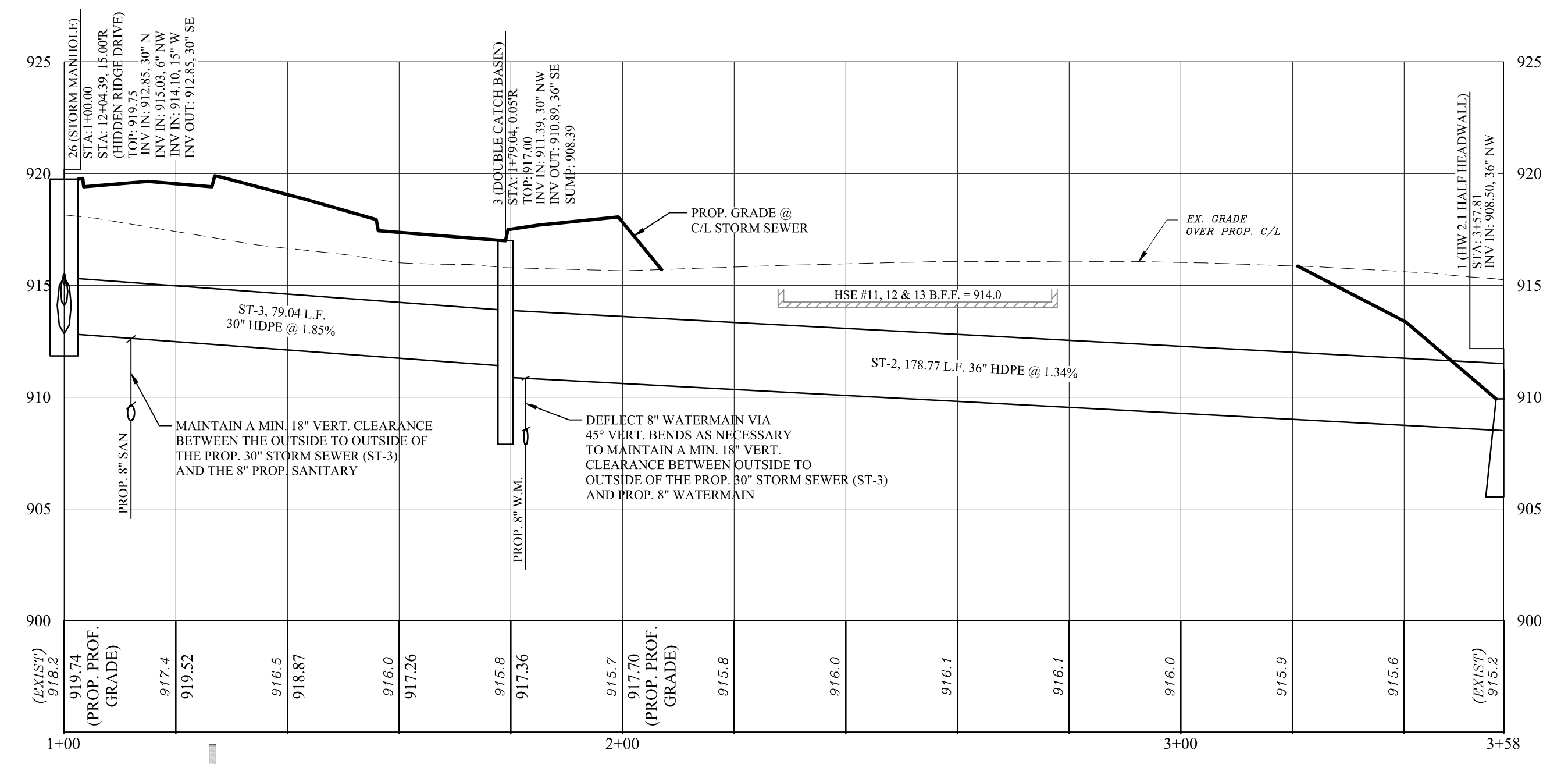
2555 Hartville Rd., Suite B
Rootstown, OH 44272
www.WeberEngineeringServices.com
330-329-2037
matt@webercivil.com



Reg. No.: 61709

Dunham Land Properties llc.

756 Ravenhill Drive
Sagamore Hills, Oh 44067
Paul Karnow
Ph.# (330) 468-2892
Fax# (330) 468-2892



Horizontal Scale: 1" = 20'
Vertical Scale: 1" = 5'

OHIO Utilities Protection SERVICE
Call Before You Dig
800-362-2764 or 8-1-1
www.oups.org

OGPUPS
Ohio Oil & Gas Producers Underground Protection Service
800-925-0988 or 8-1-1
www.ogpups.org

HIDDEN RIDGE
RESIDENTIAL SUBDIVISION
DUNHAM ROAD

Issue Date
01-25-2016
02-05-2016
02-11-2016
02-25-2016
06-01-2016
06-29-2016
08-10-2016
09-08-2016
10-03-2016
10-10-2016
03-27-2017

OFFSITE PLAN AND PROFILE

C104D
Project No. 2014-226