

SITE BENCH MARK	SITE BENCH MARK
BENCH MARK #1 TOP NUT ON HYDRANT IN CUL-DE-SAC ON ALLIANCE DRIVE (SEE SHEET C102) ELEVATION = 911.93	BENCH MARK #2 TOP NUT ON HYDRANT ON DUNHAM ROAD (SEE SHEET C102) ELEVATION = 952.66

ITALICS TEXT REPRESENTS EXISTING CONDITION
NON-ITALICS TEXT REPRESENTS PROPOSED CONDITION

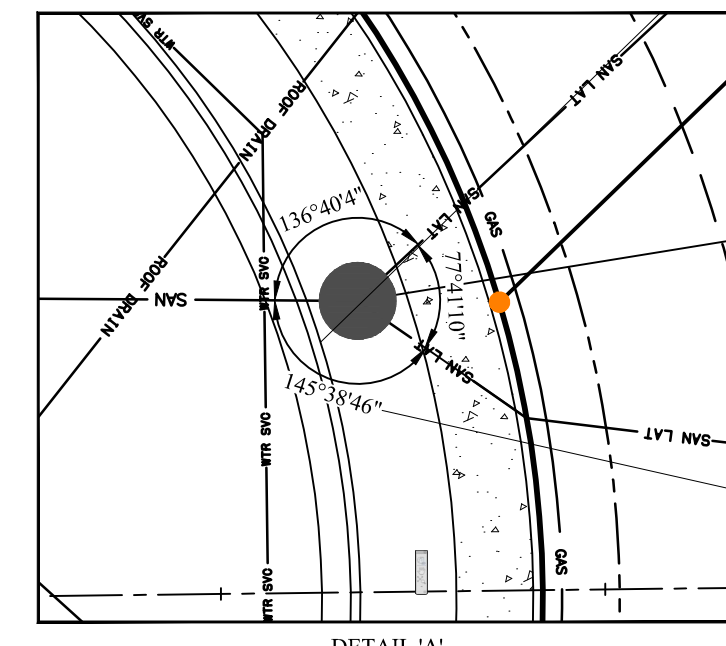
- NOTES:
- WATER CONNECTIONS SHOWN FOR REFERENCE ONLY AND ARE NOT PART OF THE WATER MAIN APPROVAL. ADDITIONAL PERMITS FOR CONNECTIONS MUST BE OBTAINED FROM C.W.D. PRIOR TO INSTALLATION. CALL THE PERMITS AND SALES UNIT FOR MORE INFORMATION AT (216) 664-2444 EXT. 5203.
 - SANITARY LATERAL NOTE: ALL SANITARY LATERALS SHALL BE 6" PVC SDR35, LAID AT 1% MINIMUM SLOPE AND ADJUSTED AS NECESSARY TO MAINTAIN REQUIRED CLEARANCES WITH OTHER UTILITIES.
 - SANITARY LATERAL NOTE: ALL STORM LATERALS SHALL BE 6" PVC, LAID AT 1% SLOPE UNLESS OTHERWISE NOTED ON THE PLANS.
 - CURB INLET CATCH BASIN NOMENCLATURE:
TOP = TOP OF CASTING/TOP OF CURB
OFFSET MEASURED AT TOP BACK OF CURB
CONTRACTOR SHALL DEFLECT W.M. & WATER SERVICES AS NECESSARY TO MAINTAIN 18" MIN. CLEARANCE BETWEEN WATERLINE & SEWERS.

WEBER ENGINEERING SERVICES
 2555 Harville Rd., Suite B
 Rootstown, OH 44272
 www.WeberEngineeringServices.com
 330-329-2037
 matt@webercivil.com

STATE OF OHIO
 REGISTERED PROFESSIONAL ENGINEER
 MATTHEW L. WEBER
 61709

Reg. No.: 61709

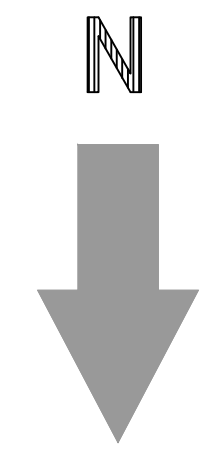
Dunham Land Properties Inc.
 756 Ravenhill Drive
 Sagamore Hills, OH 44067
 Paul Karnow
 Ph.# (330) 468-2892
 Fax.# (330) 468-2892



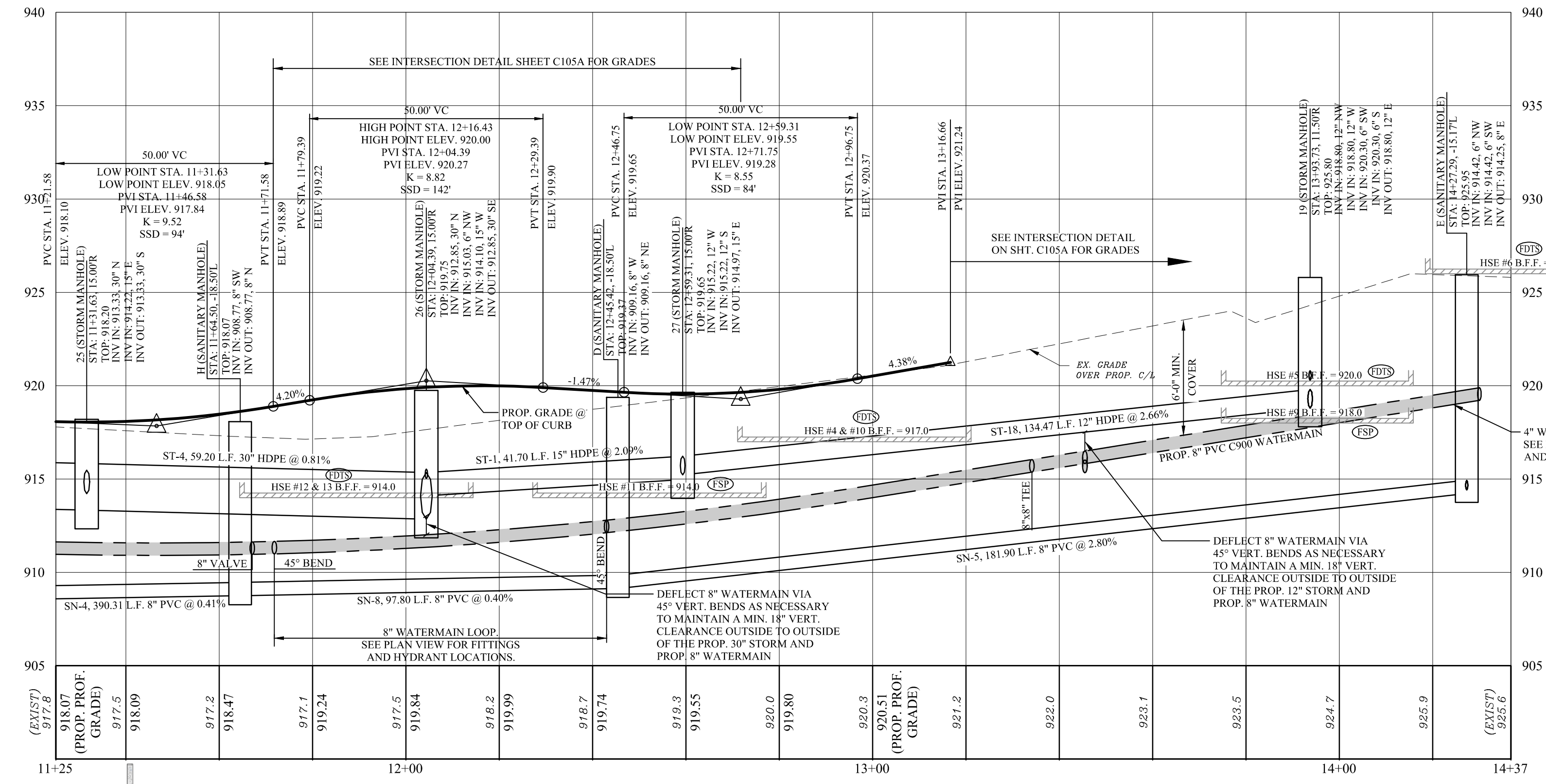
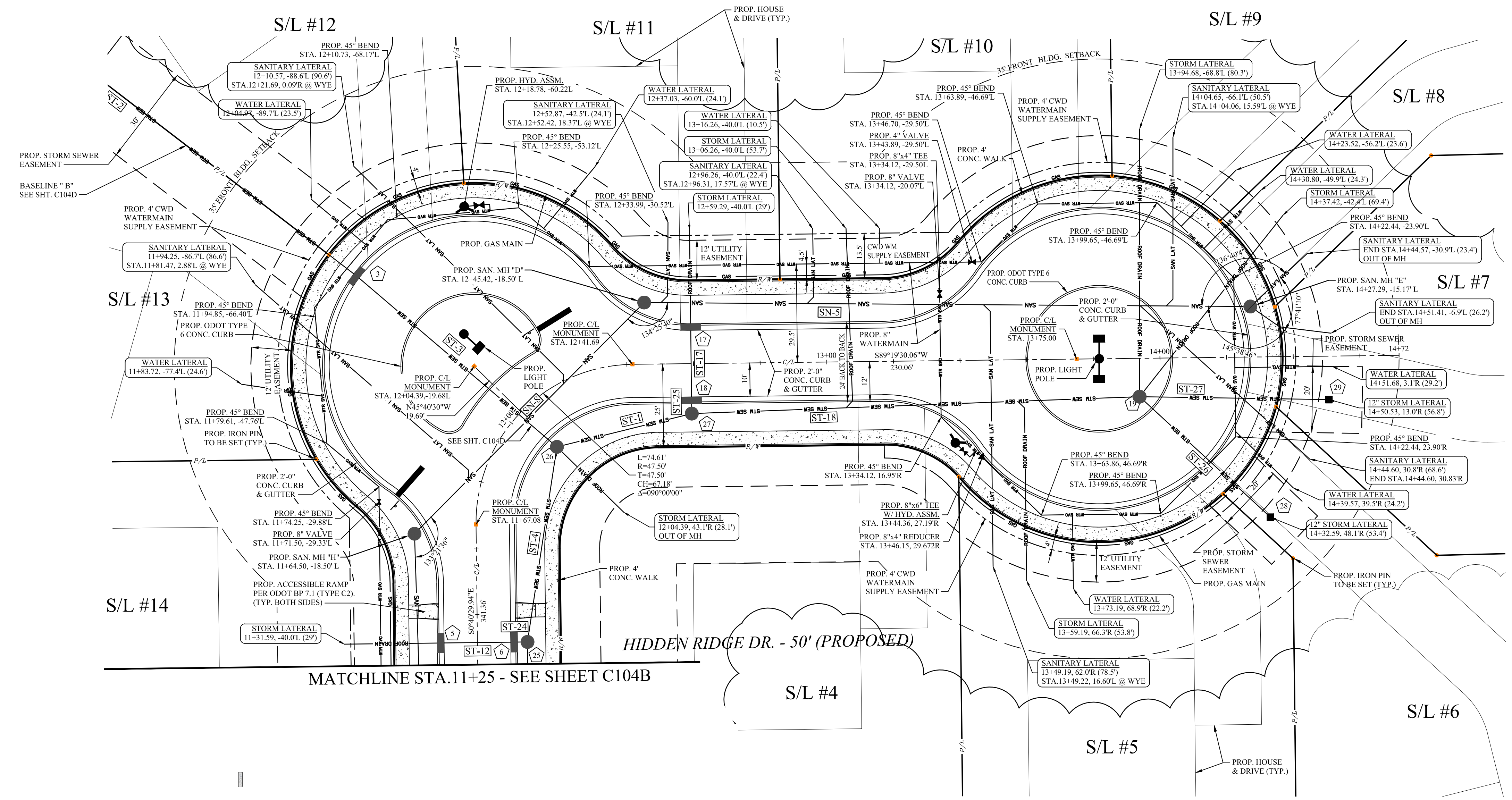
STORM STRUCTURE TABLE	
STRUCTURE	DETAILS
5	INLET BASIN (DOUBLE) RIM = 918.05 INV IN = 915.55, 6" E INV OUT = 915.05, 12" W
6	CATCH BASIN (DOUBLE) RIM = 918.05 INV IN = 914.63, 12" E INV OUT = 914.38, 15" W
17	INLET BASIN (DOUBLE) RIM = 919.55 INV IN = 917.05, 6" S INV OUT = 916.55, 12" N
18	CATCH BASIN (DOUBLE) RIM = 919.55 INV IN = 915.32, 12" S INV OUT = 915.32, 12" N
28	YARD BASIN RIM = 926.40 INV OUT = 919.33, 12" SE
29	YARD BASIN RIM = 927.50 INV OUT = 919.37, 12" E

STORM PIPE TABLE				
NAME	SIZE	MATERIAL	LENGTH	SLOPE
ST-12	12"	HDPE	22.00'	1.91%
ST-17	12"	HDPE	22.00'	5.59%
ST-24	15"	HDPE	4.00'	4.00%
ST-25	12"	HDPE	4.00'	2.50%
ST-26	12"	HDPE	53.39'	0.99%
ST-27	12"	HDPE	56.82'	1.00%

- FSP = FOUNDATION SUMP PUMP
- FDD = FOUNDATION DAYLIGHT DRAIN
- WFSP = WALK OUT FOUNDATION SUMP PUMP
- FDTS = FOUNDATION DRAIN TO STORM SEWER



Horizontal Scale: 1" = 20'
 Vertical Scale: 1" = 5'



OHIO Utilities Protection SERVICE
 Call Before You Dig
 800-362-2764 or 8-1-1
 www.oups.org

OGPUPS
 Ohio Oil & Gas Producers Underground Protection Service
 800-925-0988 or 8-1-1
 www.ogpups.org

Issue Date
01-25-2016
02-05-2016
02-11-2016
02-25-2016
06-01-2016
06-29-2016
08-10-2016
09-08-2016
10-03-2016
10-10-2016
03-27-2017

HIDDEN RIDGE
 RESIDENTIAL SUBDIVISION
 DUNHAM ROAD

PLAN AND PROFILE

C104C
 Project No. 2014-226