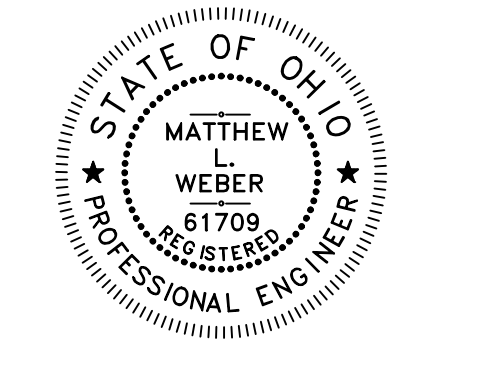


SITE BENCH MARK	SITE BENCH MARK
BENCH MARK #1 TOP NUT ON HYDRANT IN CUL-DE-SAC ON ALLIANCE DRIVE (SEE SHEET C102) ELEVATION = 911.93	BENCH MARK #2 TOP NUT ON HYDRANT ON DUNHAM ROAD (SEE SHEET C102) ELEVATION = 952.66

ITALICS TEXT REPRESENTS EXISTING CONDITION
NON-ITALICS TEXT REPRESENTS PROPOSED CONDITION



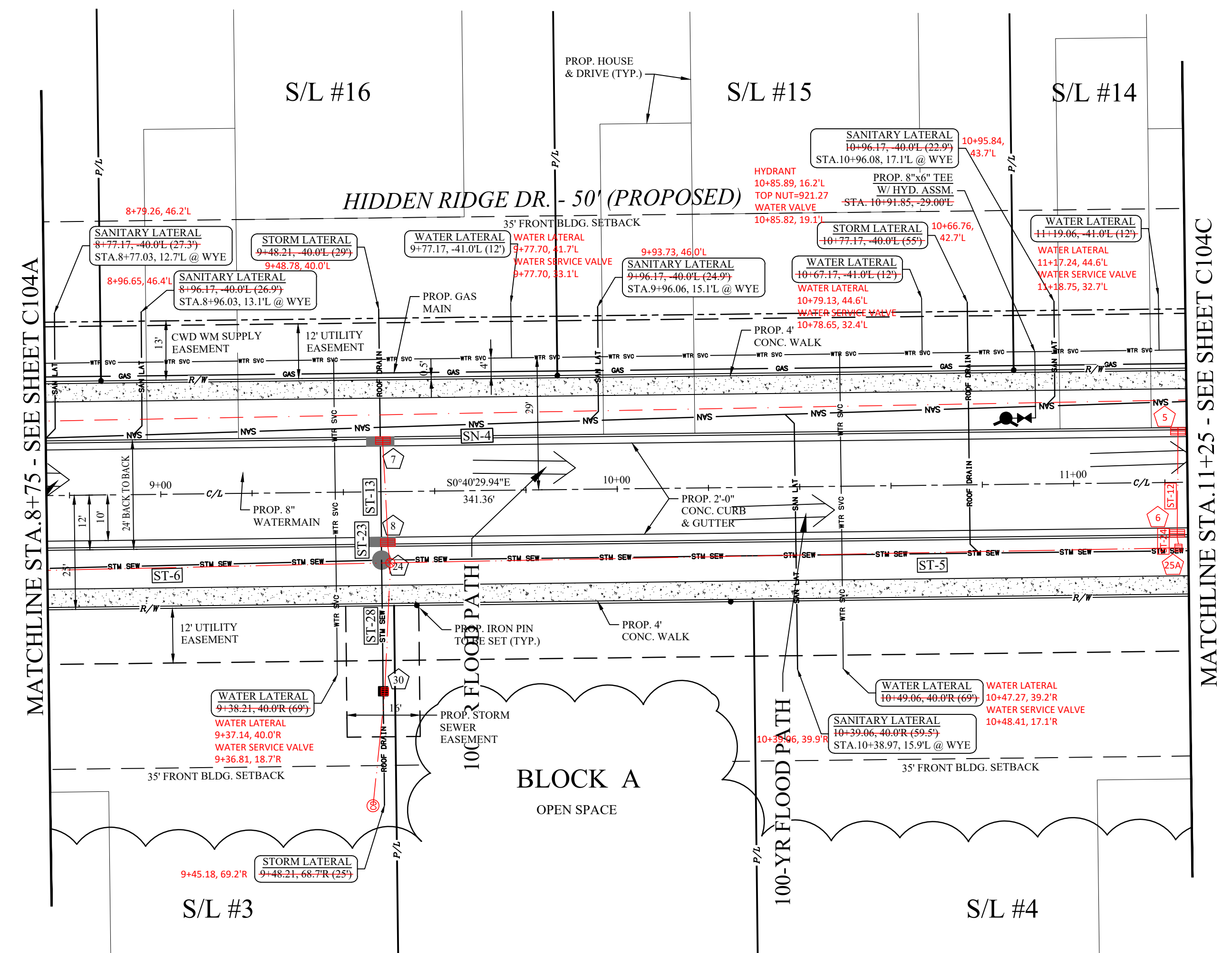
2555 Hartsville Rd., Suite B
Rookstown, OH 44272
www.WeberEngineeringServices.com
330-329-2037
matt@webercivil.com



Reg. No.: 61709

Dunham Land Properties LLC

756 Ravenhill Drive
Sagamore Hills, OH 44067
Paul Karnow
Ph.# (330) 468-2892
Fax.# (330) 468-2892



STRUCTURE	DETAILS	ELEVATION
5	INLET BASIN (DOUBLE) RIM = 918.05 917.58 INV IN = 915.55, 6' E INV OUT = 915.05, 12' W	915.28 914.98
6	CATCH BASIN (DOUBLE) RIM = 918.05 917.64 INV IN = 914.65, 12' E INV OUT = 914.36, 15' W	914.64 914.44
NEW CB 25A	TOP = 918.30 918.21 INV = 913.30 913.49 RIM = 913.30 913.49 INV = 914.27 914.12 15' E 914.36	

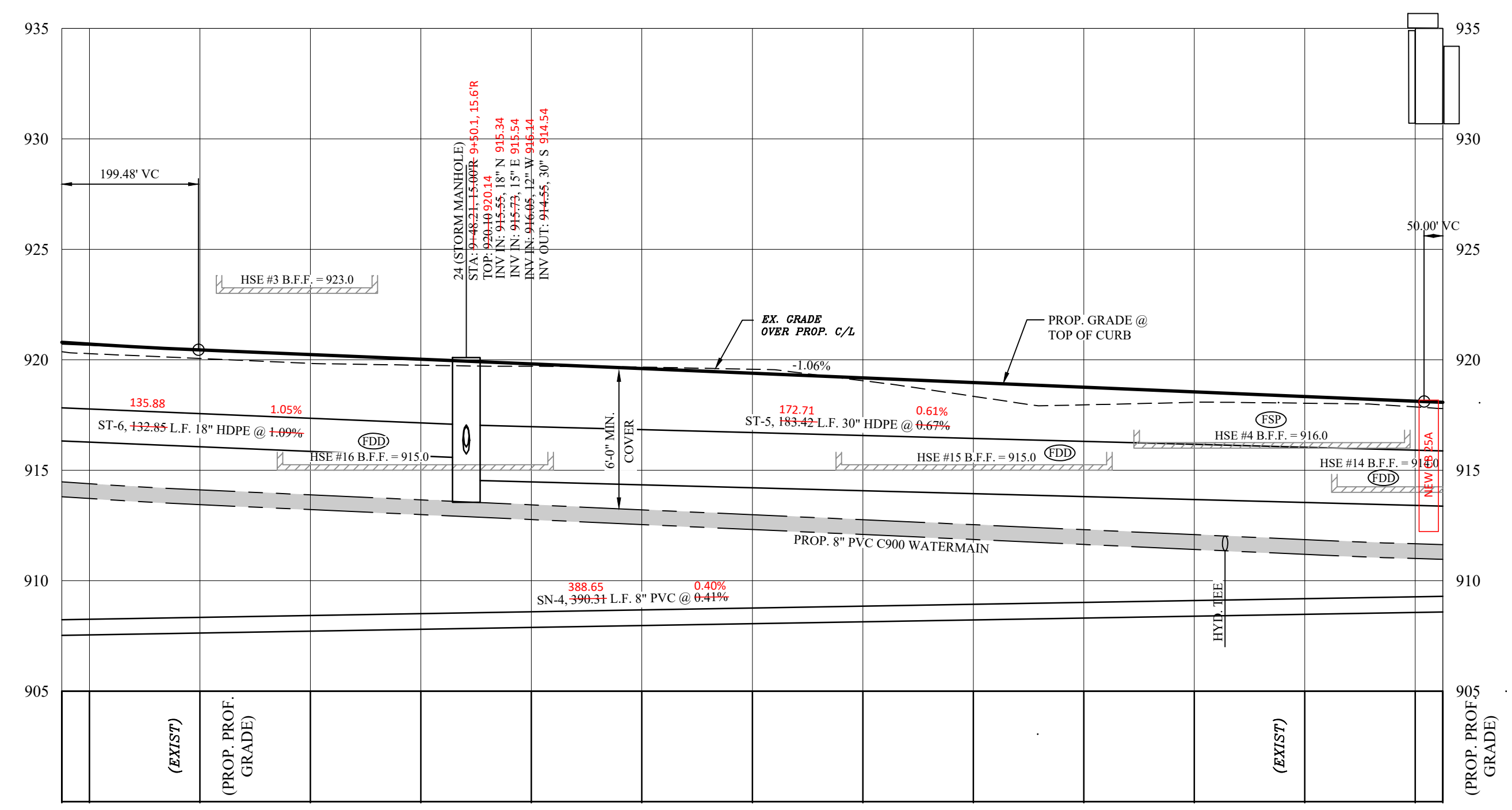
- NOTES:
- WATER CONNECTIONS SHOWN FOR REFERENCE ONLY AND ARE NOT PART OF THE WATER MAIN APPROVAL. ADDITIONAL PERMITS FOR CONNECTIONS MUST BE OBTAINED FROM C.W.D. PRIOR TO INSTALLATION. CALL THE PERMITS AND SALES UNIT FOR MORE INFORMATION AT (216) 664-2444 EXT. 5203.
 - SANITARY LATERAL NOTE: ALL SANITARY LATERALS SHALL BE 6" PVC SDR35, LAID AT 1% MINIMUM SLOPE AND ADJUSTED AS NECESSARY TO MAINTAIN REQUIRED CLEARANCES WITH OTHER UTILITIES.
 - STORM LATERAL NOTE: ALL STORM LATERALS SHALL BE 6" PVC, LAID AT 1% SLOPE UNLESS OTHERWISE NOTED ON THE PLANS.
 - CURB INLET/CATCH BASIN NOMENCLATURE:
TOP = TOP OF CASTING TOP OF CURB
OFFSET MEASURED AT TOPBACK OF CURB
 - CONTRACTOR SHALL DEFLECT W.M. & WATER SERVICES AS NECESSARY TO MAINTAIN 18" MIN. CLEARANCE BETWEEN WATERLINE & SEWERS.

- FSP = FOUNDATION SUMP PUMP
FDD = FOUNDATION DAYLIGHT DRAIN
WFSP = WALK OUT FOUNDATION SUMP PUMP
FDTS = FOUNDATION DRAIN TO STORM SEWER

NAME	SIZE	MATERIAL	LENGTH	SLOPE	LENGTH	SLOPE
ST-12	12"	HDPE	22.00'	-1.91%	23.16'	1.47%
ST-17	12"	HDPE	22.00'	-5.59%	23.31'	4.12%
ST-24	15"	HDPE	4.00'	-4.00%	2.94'	2.72%
ST-25	12"	HDPE	4.00'	-3.50%	2.87'	4.88%
ST-26	12"	HDPE	53.30'	0.99%	54.92'	7.36%
ST-27	12"	HDPE	56.82'	4.00%	56.62'	9.20%
ST-18A			9.86'	2.84%		
ST-5A			8.86'	0.90%		

STRUCTURE	DETAILS	ELEVATION
7	INLET BASIN (DOUBLE) RIM = 919.93 919.34 INV IN = 917.29, 6' E INV OUT = 916.70, 12' W	917.14 916.69
8	CATCH BASIN (DOUBLE) RIM = 919.93 919.47 INV IN = 916.16, 12' E INV OUT = 915.91, 15' W	915.92 915.72
30	YARD BASIN RIM = 919.00 920.20 INV IN = 917.60, 6' W INV OUT = 916.50, 12' E	917.15 916.80

NAME	SIZE	MATERIAL	LENGTH	SLOPE	LENGTH	SLOPE
ST-13	12"	HDPE	22.00'	-2.45%	23.00'	3.35%
ST-23	15"	HDPE	4.00'	-4.50%	4.34'	4.15%
ST-28	12"	HDPE	28.74'	1.57%	28.21'	2.34%



Horizontal Scale: 1" = 20'
Vertical Scale: 1" = 5'



800-362-2764 or 8-1-1
www.oups.org



800-925-0988 or 8-1-1
www.ogpups.org

Issue Date
01-25-2016
02-05-2016
02-11-2016
02-25-2016
06-01-2016
06-29-2016
08-10-2016
09-08-2016
10-03-2016
10-10-2016
03-27-2017

HIDDEN RIDGE
RESIDENTIAL SUBDIVISION
DUNHAM ROAD

PLAN AND
PROFILE

C104B
Project No. 2014-226

AS-BUILT MEASUREMENTS BY DEMPSEY SURVEYING COMPANY AUGUST 1, 2017.
AS-BUILT MEASUREMENTS BY DEMPSEY SURVEYING COMPANY REVISED FEBRUARY 13, 2018.
AS-BUILT MEASUREMENTS BY DEMPSEY SURVEYING COMPANY REVISED SEPTEMBER 20, 2018.

DEMPSEY SURVEYING / COMPANY
12815 DETROIT AVENUE
P 216/226/7130 F 216/226/7131 CLEVELAND, OH 44107-2835

