

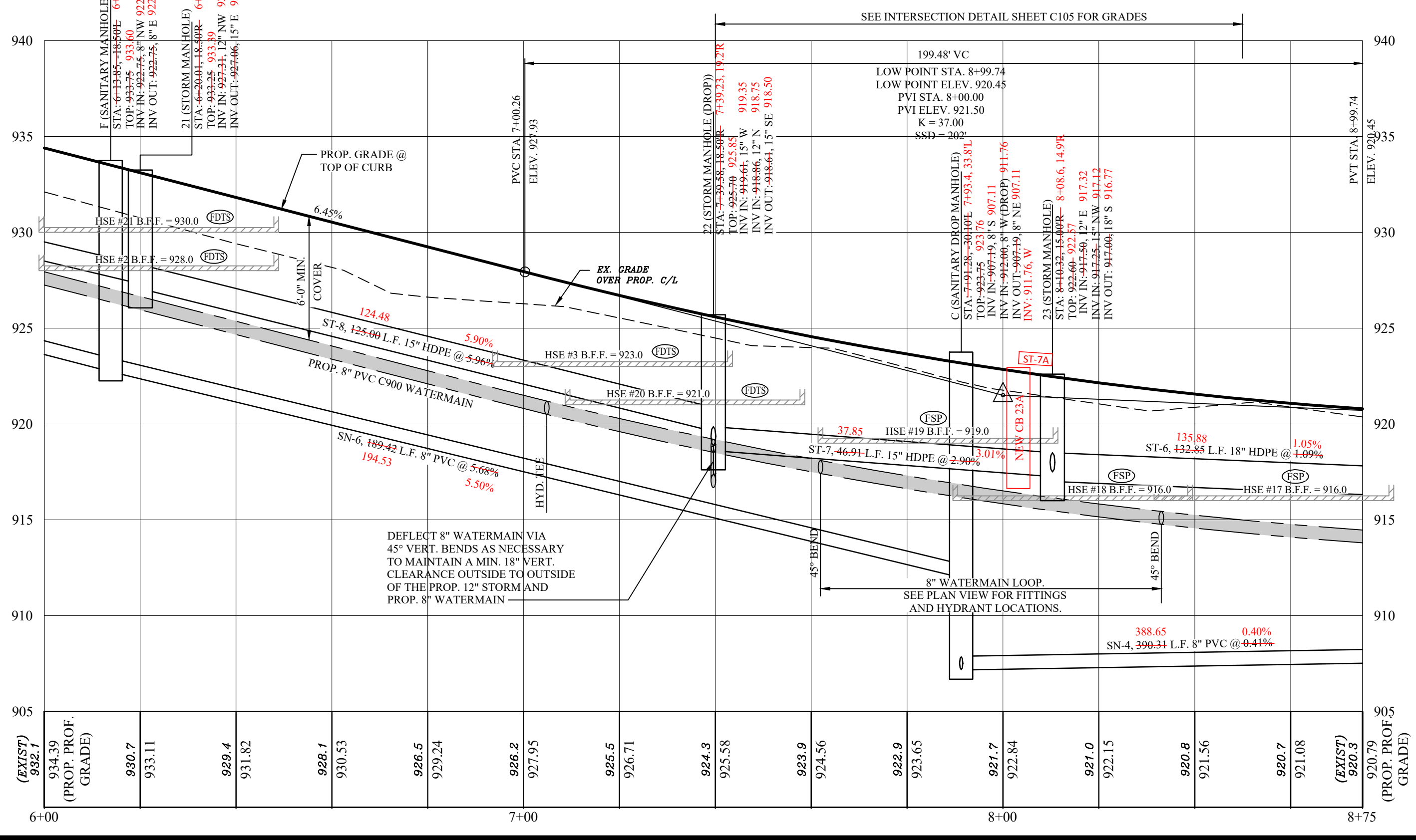
SITE BENCH MARK		SITE BENCH MARK	
BENCH MARK #1 TOP NUT ON HYDRANT IN CUL-DE-SAC ON ALLIANCE DRIVE (SEE SHEET C102)	ELEVATION = 911.93	BENCH MARK #2 TOP NUT ON HYDRANT ON DUNHAM ROAD (SEE SHEET C102)	ELEVATION = 952.66

- NOTES:
1. WATER CONNECTIONS SHOWN FOR REFERENCE ONLY AND ARE NOT PART OF THE WATER MAIN APPROVAL. ADDITIONAL PERMITS FOR CONNECTIONS MUST BE OBTAINED FROM C.W.D. PRIOR TO INSTALLATION. CALL THE PERMITS AND SALES UNIT FOR MORE INFORMATION AT (216) 664-2444 EXT. 5203.
 2. SANITARY LATERAL NOTE: ALL SANITARY LATERALS SHALL BE 6" PVC SDR35, LAID AT 1% MINIMUM SLOPE AND ADJUSTED AS NECESSARY TO MAINTAIN REQUIRED CLEARANCES WITH OTHER UTILITIES.
 3. STORM LATERAL NOTE: ALL STORM LATERALS SHALL BE 6" PVC, LAID AT 1% SLOPE UNLESS OTHERWISE NOTED ON THE PLANS.
 4. CURB INLET/CATCH BASIN NOMENCLATURE:
TOP = TOP OF CASTING/TOP OF CURB
OFFSET MEASURED AT TOP/BACK OF CURB
 5. CONTRACTOR SHALL DEFLECT W.M. & WATER SERVICES AS NECESSARY TO MAINTAIN 18" MIN. CLEARANCE BETWEEN WATERLINE & SEWERS.

- FSP = FOUNDATION SUMP PUMP
 FDD = FOUNDATION DAYLIGHT DRAIN
 WFSP = WALK OUT FOUNDATION SUMP PUMP
 FDTS = FOUNDATION DRAIN TO STORM SEWER

STORM STRUCTURE TABLE	
STRUCTURE	DETAILS
10	CATCH BASIN RIM = 925.64 925.07 INV IN = 919.43, 12" N INV OUT = 919.43, 12" S 918.92
11	INLET BASIN RIM = 925.64 925.15 INV IN = 920.50, 6" N INV OUT = 920.00, 12" S 920.00
31	CATCH BASIN RIM = 918.77 922.42 INV IN = 917.54, 12" E INV IN = 918.04, 6" NE INV OUT = 917.54, 12" W INV OUT = 918.82 6" W 918.37
32	INLET BASIN RIM = 919.14 921.15 INV IN = 917.40, 15" E INV IN = 917.40, 15" W INV IN = 917.65, 12" N 917.86
NEW CB 23A	TOP = 923.00 922.86 INV = 917.40, 15" E 917.36 INV = 917.40, 15" W 917.36 INV = 917.65, 12" N 917.86

STORM PIPE TABLE				
NAME	SIZE	MATERIAL	LENGTH	SLOPE
ST-14	12"	HDPE	22.00'	-3.95%
ST-22	12"	HDPE	7.50'	-3.60%
ST-29	12"	HDPE	4.00'	+1.00%
ST-30	12"	HDPE	37.00'	+1.00%
ST-7A			8.49'	2.83%



WEBER ENGINEERING SERVICES
 Where Strong Relationships & Superior Service Guide Your Project

2555 Hartville Rd., Suite B
 Rootstown, OH 44272
 www.WeberEngineeringServices.com
 330-329-2037
 matt@webercivil.com

STATE OF OHIO
 MATTHEW WEBER
 REGISTERED PROFESSIONAL ENGINEER

Reg. No.: 61709

Dunham Land Properties Inc.

756 Ravenhill Drive
 Sagamore Hills, OH 44067
 Paul Karnow
 Ph.# (330) 468-2892
 Fax# (330) 468-2892

Issue Date
01-25-2016
02-05-2016
02-11-2016
02-25-2016
06-01-2016
06-29-2016
08-10-2016
09-08-2016
10-03-2016
10-10-2016
03-27-2017

HIDDEN RIDGE
 RESIDENTIAL SUBDIVISION
 DUNHAM ROAD

PLAN AND
 PROFILE

C104A
 Project No. 2014-226

OHIO Utilities Protection SERVICE
 Call Before You Dig
 800-362-2764 or 8-1-1
 www.oups.org

OGPUPS
 Ohio Gas & Electric Producers Underground Protection Service
 800-925-0988 or 8-1-1
 www.ogpups.org

AS-BUILT MEASUREMENTS BY: DEMPSEY SURVEYING COMPANY AUGUST 1, 2017.
 AS-BUILT MEASUREMENTS BY: DEMPSEY SURVEYING COMPANY REVISION FEBRUARY 13, 2018.

DEMPSEY SURVEYING / COMPANY
 P. 216 (228) 1130 | 12815 DETROIT AVENUE
 AS-BUILT MEASUREMENTS BY: DEMPSEY SURVEYING COMPANY
 P. 216 (228) 1131 | CLEVELAND, OH 44107-2688

Horizontal Scale: 1" = 20'
 Vertical Scale: 1" = 5'