

SITE BENCH MARK
BENCH MARK #1
TOP NUT ON HYDRANT
IN CUL-DE-SAC ON ALLIANCE DRIVE
ELEVATION = 911.93

SITE BENCH MARK
BENCH MARK #2
TOP NUT ON HYDRANT
ON DUNHAM ROAD
ELEVATION = 952.66

7.27Ac
= AREA OF DEMOLITION & CLEARING

X
= ITEM TO BE REMOVED

[Stippled Area]
= WETLANDS

ITALICS TEXT REPRESENTS EXISTING CONDITION
NON-ITALICS TEXT REPRESENTS PROPOSED CONDITION

WETLANDS

TOTAL WETLANDS ON SITE = 0.60 Ac.
WETLANDS TO BE FILLED = 0.35 Ac.
WETLANDS TO REMAIN = 0.25 Ac.

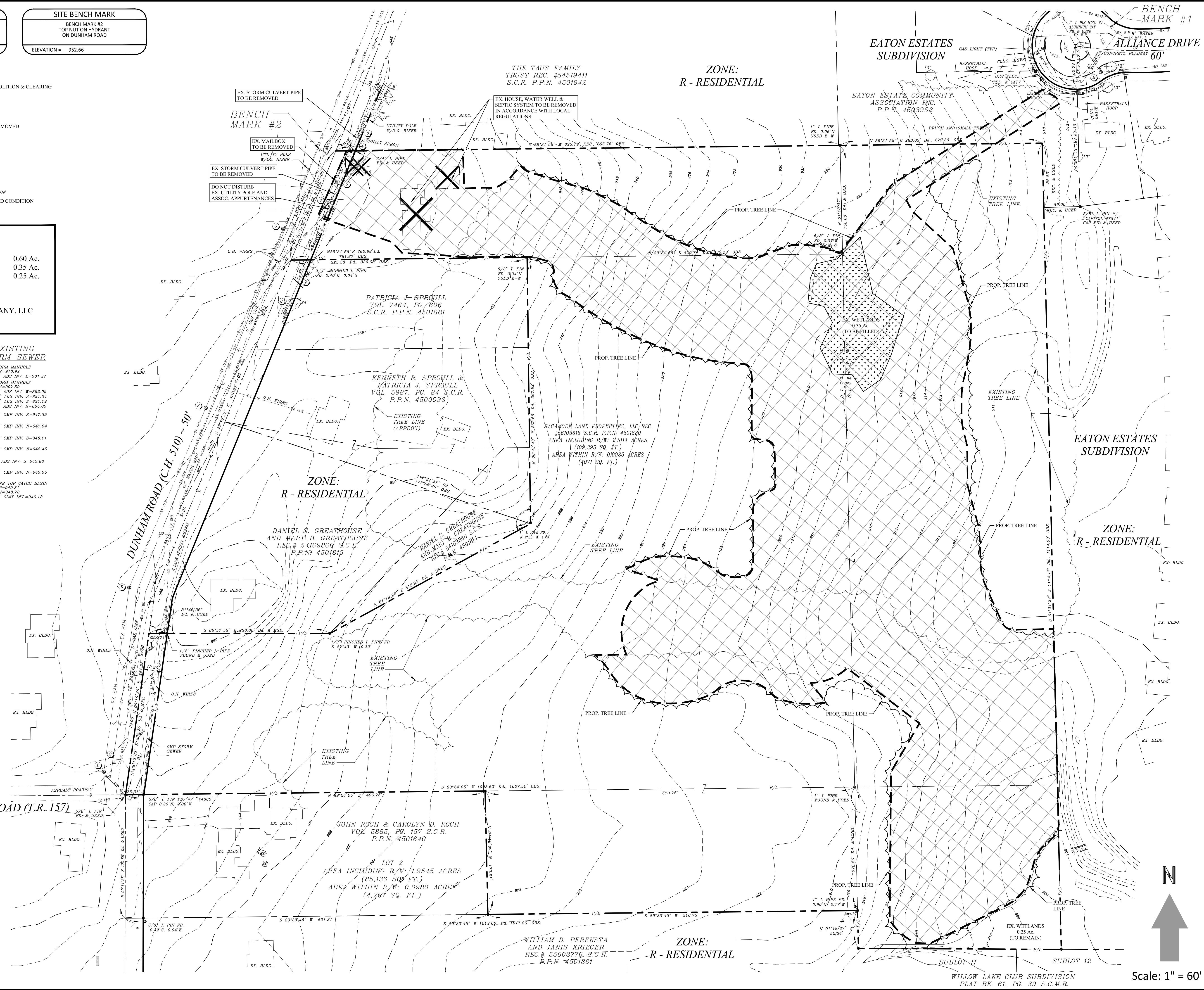
USACE PERMIT NO. 2015-01091
PREPARED BY:
FLICKINGER WETLAND COMPANY, LLC
8530 N. BOYLE PARKWAY
TWINSBURG, OH 44087

EXISTING SANITARY SEWER

- ① SANITARY MANHOLE
RIM=912.26
8" PVC INV. N&S=898.06
- ② SANITARY MANHOLE
RIM=908.18
8" PVC INV. N&S=896.83
- ③ SANITARY MANHOLE
RIM=900.21
8" PVC INV. N=890.21
- ④ SANITARY MANHOLE
RIM=950.29
8" PVC INV. N=935.11
8" PVC INV. W=935.03
- ⑤ SANITARY MANHOLE
RIM=954.63
8" PVC INV. N&S=936.23
- ⑥ SANITARY MANHOLE
RIM=953.60
8" PVC INV. N&S=937.20
- ⑦ SANITARY MANHOLE
RIM=950.67
8" PVC INV. S=938.32
8" PVC INV. E=938.41

EXISTING STORM SEWER

- ① STORM MANHOLE
RIM=910.92
12" ADS INV. E=901.37
- ② STORM MANHOLE
RIM=907.53
12" ADS INV. W=892.09
24" ADS INV. S=891.34
24" ADS INV. E=891.19
15" ADS INV. N=895.09
- ③ 12" CMP INV. S=947.59
- ④ 12" CMP INV. N=947.94
- ⑤ 12" CMP INV. S=948.11
- ⑥ 12" CMP INV. N=948.45
- ⑦ 8" ADS INV. S=949.83
- ⑧ 10" CMP INV. N=949.95
- ⑨ CORR. TOP CATCH BASIN
TOP=949.51
RIM=948.79
12" CLAY INV.=946.18



OHIO Utilities Protection SERVICE
Call Before You Dig
800-362-2764 or 8-1-1
www.oups.org

OGPUPS
Ohio Oil & Gas Producers Underground Protection Service
800-925-0988 or 8-1-1
www.ogpups.org

WEBER ENGINEERING SERVICES
Where Strong Relationships & Superior Service Guide Your Project

2555 Hartsville Rd., Suite B
Rookstown, OH 44272
www.WeberEngineeringServices.com
330-329-2037
matt@webercivil.com

STATE OF OHIO
MATTHEW WEBER
61709
REGISTERED PROFESSIONAL ENGINEER

Reg. No.: 61709

Dunham Land Properties llc.

756 Ravenhill Drive
Sagamore Hills, OH 44067
Paul Karnow
Ph.# (330) 468-2892
Fax# (330) 468-2892

Issue Date

01-25-2016
02-05-2016
02-11-2016
02-25-2016
06-01-2016
06-29-2016
08-10-2016
09-08-2016
10-03-2016
10-10-2016
03-27-2017

HIDDEN RIDGE
RESIDENTIAL SUBDIVISION
DUNHAM ROAD

DEMOLITION PLAN

C102
Project No. 2014-226

