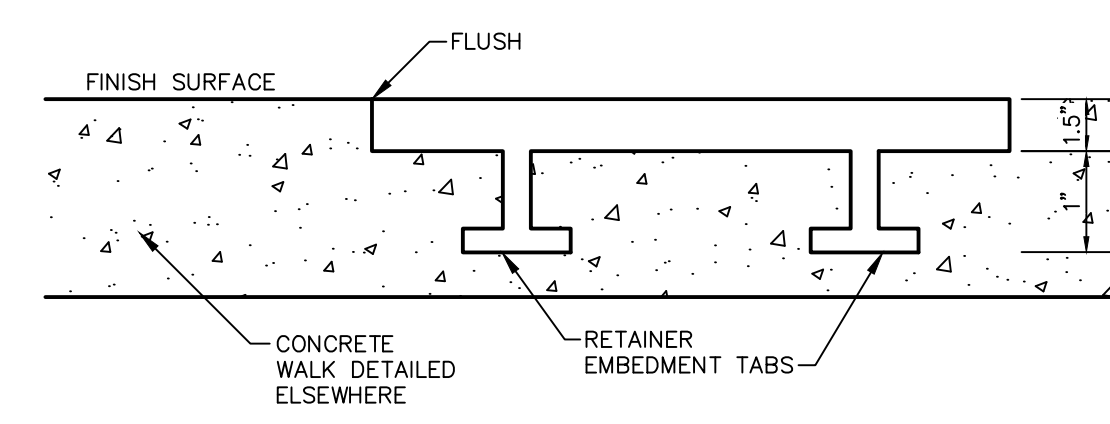
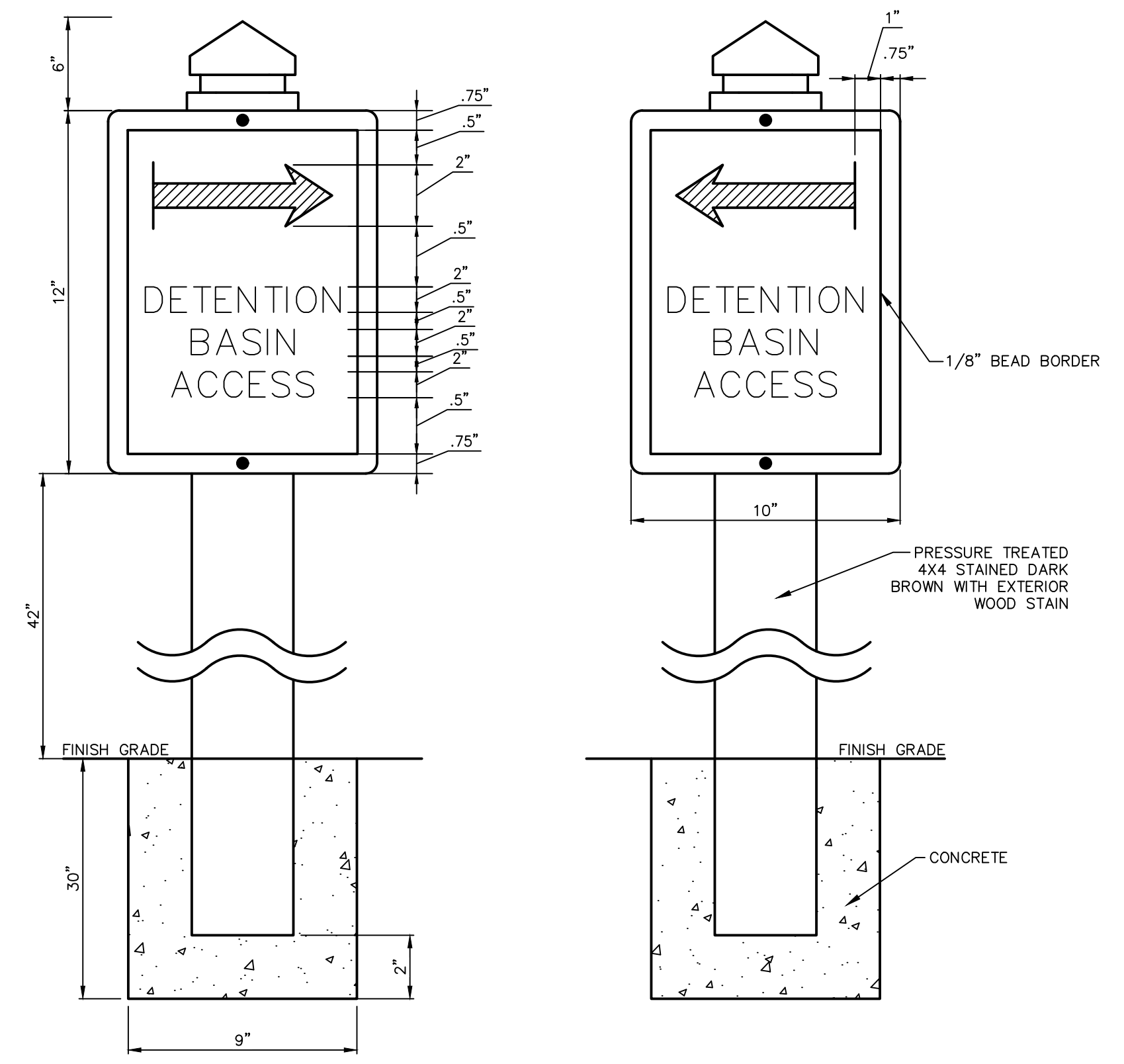


- NOTES:**
1. MARKER PLAQUES TO BE MADE OF MATERIAL THAT WILL NOT WEAR DOWN OVER TIME. LETTERS AND IMAGES TO BE MOLDED INTO PLACARD OR STAMPED 1/2" DEEP TO RETAIN INFORMATION.
  2. MARKERS ARE TO BE PLACED AT THE BACK OF WALK, EMBEDDED IN THE CONCRETE SUCH THAT THEY DO NOT COME FREE FROM THE CONCRETE WALK SURFACE.
  3. ALL SPECIFICATIONS SHALL BE CONFIRMED WITH PULTE PRIOR TO MAKING.

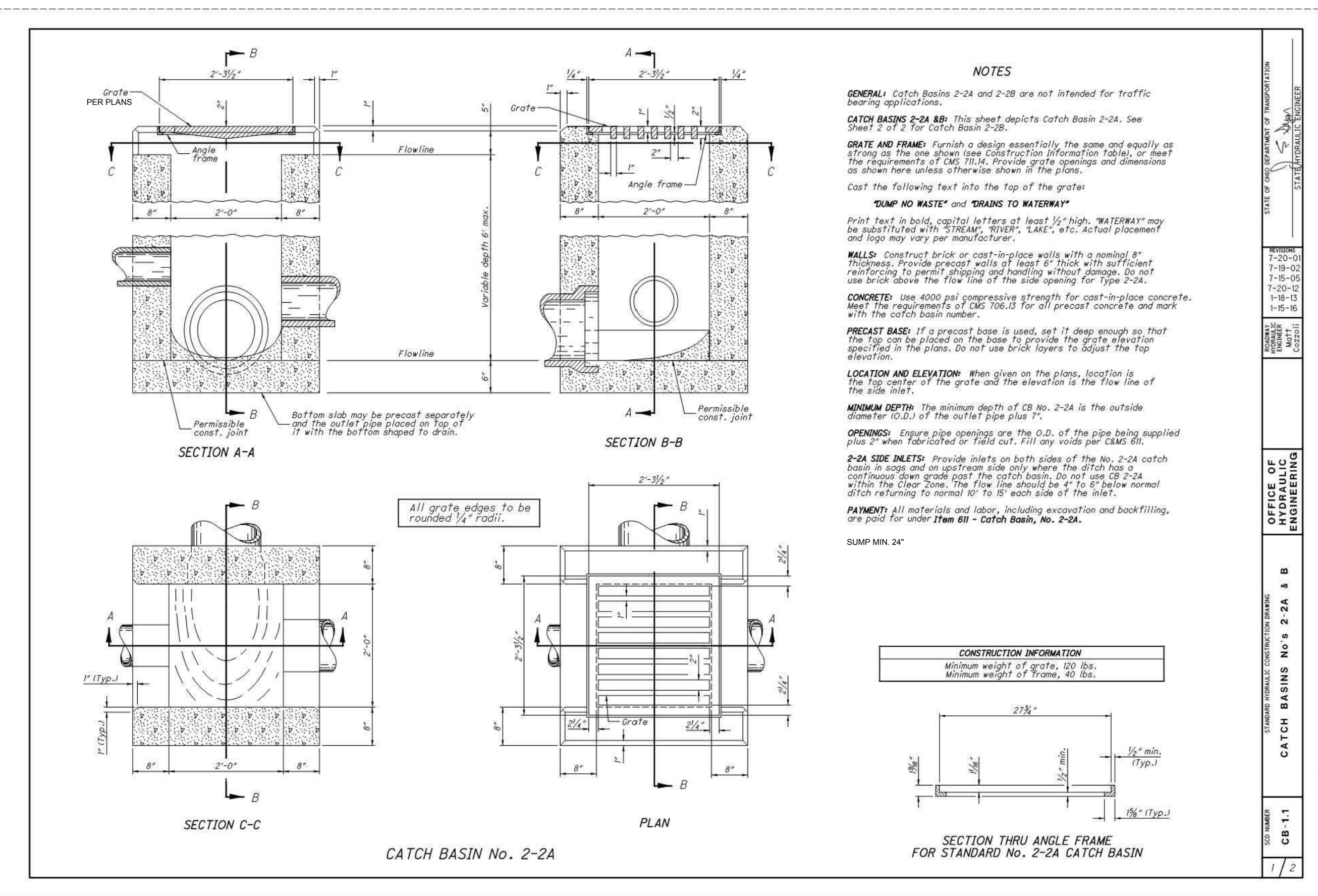


**DETENTION BASIN ACCESS MARKERS**  
N.T.S.

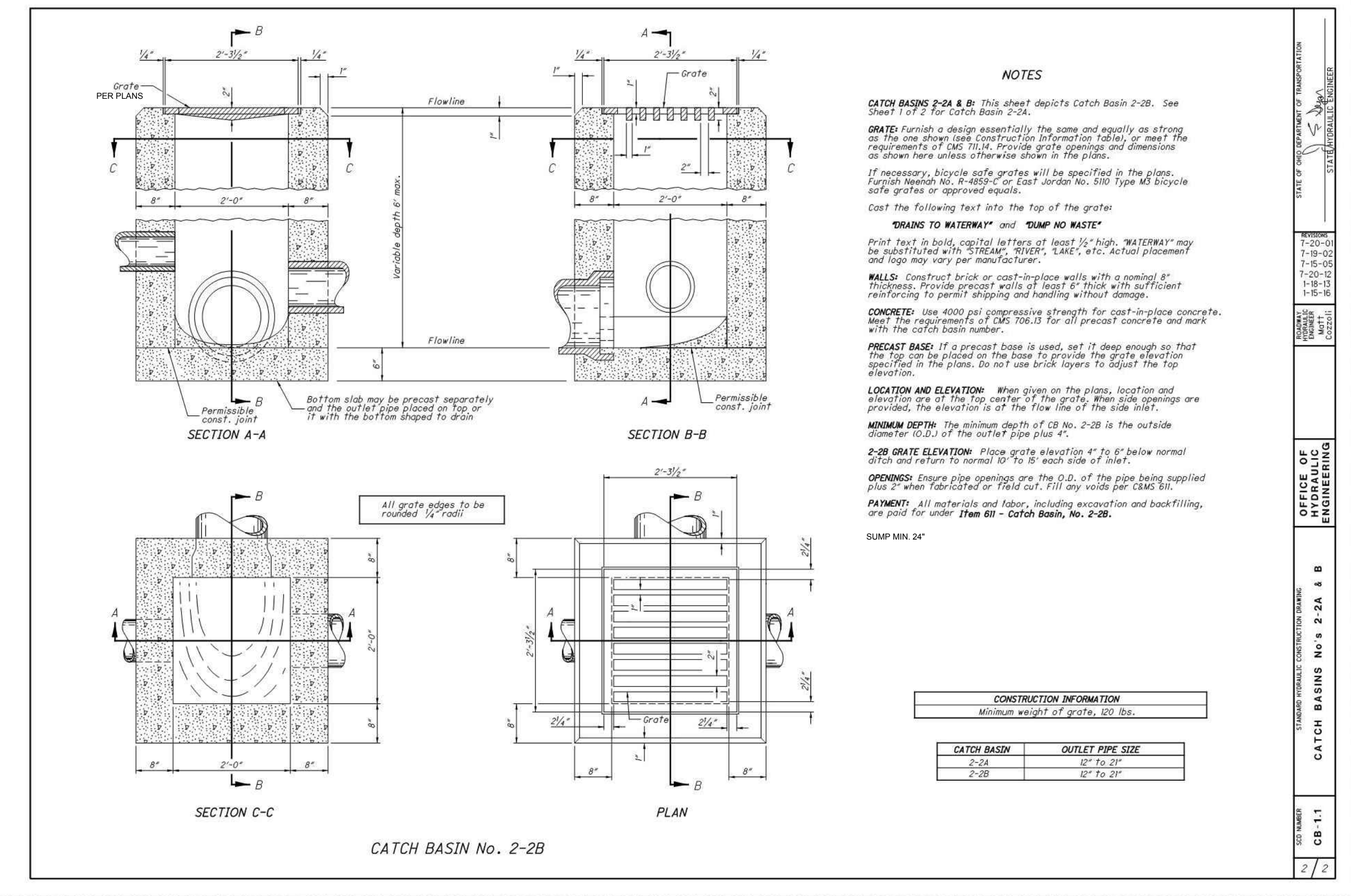


- NOTES:**
1. SIGN POSTS TO BE PRESSURE TREATED 4X4 STAINED DARK BROWN.
  2. ALUMINUM SIGN TO BE LIGHT BROWN IN COLOR BOTH SIDES.
  3. LETTERS AND BOARDER TO BE DARK BROWN IN COLOR.
  4. SIGNS TO BE PLACED AT THE REAR PROPERTY LINES WHERE THE 12 FT ACCESS WAY CROSSES. THERE SHALL BE 12 FT CLEARANCE BETWEEN THE SIGNS THROUGH THE ACCESS WAY.
  5. ALL SPECIFICATIONS SHALL BE CONFIRMED WITH PULTE PRIOR TO MAKING.

**DETENTION BASIN ACCESS SIGNAGE**  
N.T.S.



- NOTES**
- GENERAL:** Catch Basins 2-2A and 2-2B are not intended for traffic bearing applications.
- CATCH BASINS 2-2A & B:** This sheet depicts Catch Basin 2-2A. See Sheet 2 of 2 for Catch Basin 2-2B.
- GRATE AND FRAME:** Furnish a design essentially the same and equally as strong as the one shown (see Construction Information Table) or meet the requirements of CMS 711.4. Provide grate openings and dimensions as shown here unless otherwise shown in the plans.
- Cast the following text into the top of the grate:
- "DUMP NO WASTE" and "DRAINS TO WATERWAY"**
- Print text in bold, capital letters at least 1/8" high. "WATERWAY" may be substituted with "STREAM", "RIVER", "LAKE", etc. Actual placement and logo may vary per manufacturer.
- WALLS:** Construct brick or cast-in-place walls with a nominal 8" thickness. Provide precast walls of least 6" thick with sufficient reinforcing to permit shipping and handling without damage. Do not use brick above the flow line of the side opening for type 2-2A.
- CONCRETE:** Use 4000 psi compressive strength for cast-in-place concrete. Meet the requirements of CMS 706.13 for all precast concrete and mark with the catch basin number.
- PRECAST BASE:** If a precast base is used, set it deep enough so that the top can be placed on the base to provide the grate elevation specified in the plans. Do not use brick layers to adjust the top elevation.
- LOCATION AND ELEVATION:** When given on the plans, location is the top center of the grate and the elevation is the flow line of the side inlet.
- MINIMUM DEPTH:** The minimum depth of CB No. 2-2A is the outside diameter (O.D.) of the outlet pipe plus 1".
- OPENINGS:** Ensure pipe openings are the O.D. of the pipe being supplied plus 2" when fabricated or 1/8" in. Fill any voids per CMS 611.
- 2-2A SIDE INLETS:** Provide inlets on both sides of the No. 2-2A catch basin in each and on upstream side only where the ditch has a continuous flow grade past the catch basin. Do not use CB 2-2A within the Clear Zone. The flow line should be 4" to 6" below normal ditch turning to normal 10' to 15' each side of the inlet.
- PAYMENTS:** All materials and labor, including excavation and backfilling, are paid for under Item 611 - Catch Basin, No. 2-2A.
- SUMP MIN 24"



- NOTES**
- CATCH BASINS 2-2A & B:** This sheet depicts Catch Basin 2-2B. See Sheet 1 of 2 for Catch Basin 2-2A.
- GRATE:** Furnish a design essentially the same and equally as strong as the one shown (see Construction Information Table) or meet the requirements of CMS 711.4. Provide grate openings and dimensions as shown here unless otherwise shown in the plans.
- If necessary, bicycle safe grates will be specified in the plans. Furnish Neenah No. R-489-C or East Jordan No. 510 Type M3 bicycle safe grates or approved equals.
- Cast the following text into the top of the grate:
- "DRAINS TO WATERWAY" and "DUMP NO WASTE"**
- Print text in bold, capital letters at least 1/8" high. "WATERWAY" may be substituted with "STREAM", "RIVER", "LAKE", etc. Actual placement and logo may vary per manufacturer.
- WALLS:** Construct brick or cast-in-place walls with a nominal 8" thickness. Provide precast walls of least 6" thick with sufficient reinforcing to permit shipping and handling without damage.
- CONCRETE:** Use 4000 psi compressive strength for cast-in-place concrete. Meet the requirements of CMS 706.13 for all precast concrete and mark with the catch basin number.
- PRECAST BASE:** If a precast base is used, set it deep enough so that the top can be placed on the base to provide the grate elevation specified in the plans. Do not use brick layers to adjust the top elevation.
- LOCATION AND ELEVATION:** When given on the plans, location and elevation are of the top center of the grate. When side openings are provided, the elevation is of the flow line of the side inlet.
- MINIMUM DEPTH:** The minimum depth of CB No. 2-2B is the outside diameter (O.D.) of the outlet pipe plus 4".
- 2-2B GRATE ELEVATION:** Place grate elevation 4" to 6" below normal ditch and return to normal 10' to 15' each side of inlet.
- OPENINGS:** Ensure pipe openings are the O.D. of the pipe being supplied plus 2" when fabricated or 1/8" in. Fill any voids per CMS 611.
- PAYMENTS:** All materials and labor, including excavation and backfilling, are paid for under Item 611 - Catch Basin, No. 2-2B.
- SUMP MIN 24"

REV.	DATE	DESCRIPTION
01/23/17	ISSUED FOR REVIEW	
04/17/17	REVISED PER AGENCY COMMENTS	

**THE PRESERVE AT MILLER'S FARM**  
**PHASE 4**  
 SE CORNER OF SR 18 AND MEDINA LINE RD  
 COPLEY, OHIO 44321

**DETAILS**

ISSUED FOR:	
PERMIT	01/23/17
BID	
CONSTRUCTION	
AS-BUILT	
PROJECT MANAGER	DESIGNER
MAL	ALF

JOB NO  
**2013258.04**

**24/29**