

### HARVESTER DRIVE MONUMENT BOX SCHEDULE

#	STATION	OFFSET
12	100+00.00	0.00
13	101+09.53	0.00

STATION AND OFFSET TAKEN FROM CONSTRUCTION C/L  
 REFER TO MONUMENT BOX DETAIL SHEET 26

**BENCHMARK #2**  
 RAILROAD SPIKE IN POLE  
 ELEVATION = 1101.95'  
 SEE SHEET 02 FOR LOCATION OF ALL BENCHMARKS

### HARVESTER DRIVE WATER MAIN FITTING SCHEDULE

ITEM	STATION	OFFSET
WATER VALVE	98+54.81	28.24' LT.
6" HYD. ASSEMBLY, TYPE B	99+66.28	22.46' LT.
22.5" BEND	100+08.60	14.87' LT.
6" HYD. ASSEMBLY, TYPE B	102+22.38	17.00' LT.
45° VERTICAL BEND	100+19.12	
45° VERTICAL BEND	100+19.89	
45° VERTICAL BEND	100+23.89	
45° VERTICAL BEND	100+29.95	

\* STATION AND OFFSET TAKEN TO CENTER OF HYDRANT  
 NOTE: PROVIDE CONCRETE THRUST BLOCKING ON ALL WATER LINE BENDS PER DETAIL SHEET 29

### HARVESTER DRIVE WATER CONNECTION SCHEDULE

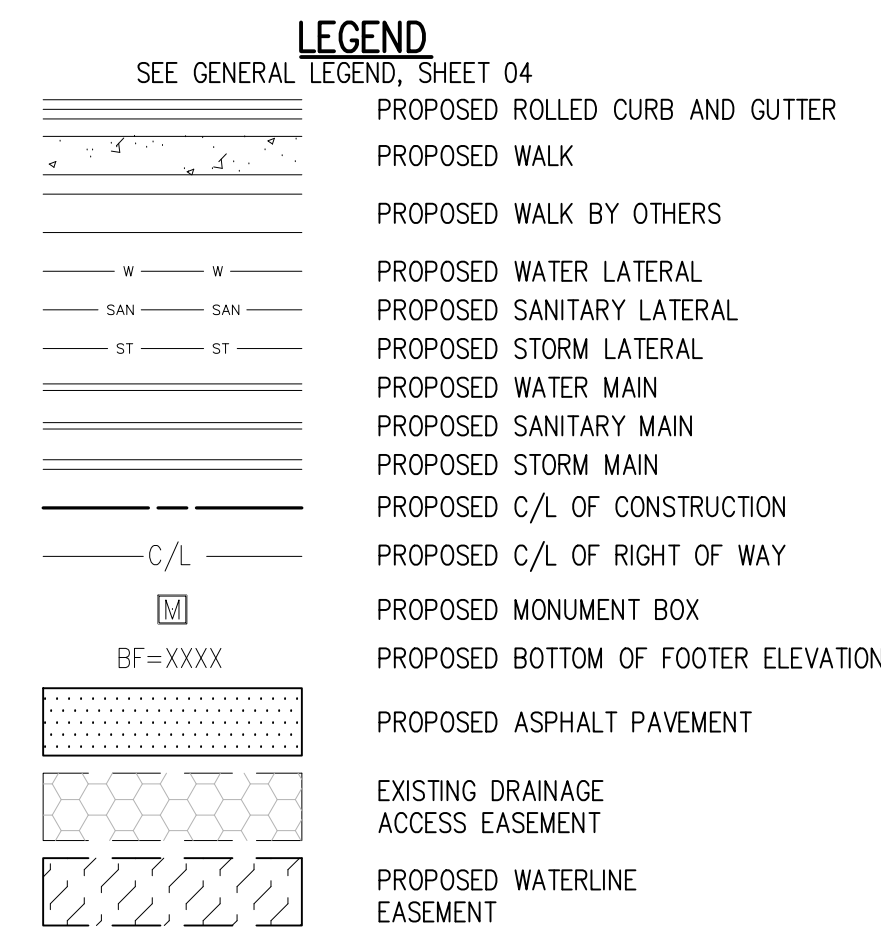
UNIT	CONNECTION AT MAIN	LATERAL TERMINATION	LENGTH
145	102+36.09, 19.43' LT.	102+35.41, 40.00' RT.	59.42'
146	101+57.23, 20.41' LT.	101+53.54, 40.00' RT.	60.41'
147	100+57.11, 18.87' LT.	100+60.11, 40.57' RT.	59.52'
148	99+96.52, 15.45' LT.	100+02.14, 76.96' RT.	94.37'
149	99+90.48, 17.51' LT.	99+46.81, 40.35' RT.	79.60'
150	99+85.63, 18.72' LT.	99+27.76, 20.17' LT.	58.93'
151	99+76.13, 21.88' LT.	99+60.00, 63.45' LT.	46.40'
152	101+20.37, 21.46' LT.	101+20.58, 40.60' LT.	18.54'
153	101+98.66, 20.61' LT.	101+98.88, 40.00' LT.	19.39'
154	102+78.65, 19.65' LT.	102+78.88, 39.97' LT.	20.33'

### HARVESTER DRIVE STORM CONNECTION SCHEDULE

UNIT	CONNECTION AT MAIN	LATERAL TERMINATION	LENGTH	INVERT
145	102+40.63, 20.55' RT.	102+40.69, 40.00' RT.	19.45'	1056.19
146	101+58.76, 20.80' RT.	101+58.82, 40.00' RT.	19.20'	1056.81
147	100+75.88, 26.11' RT.	100+73.14, 40.00' RT.	20.13'	1057.45
148	99+90.40, 22.14' RT.	99+97.76, 76.97' RT.	55.32'	1058.06
149	99+74.84, 24.41' RT.	99+46.17, 52.23' RT.	39.94'	1058.14
150	99+74.84, 24.41' RT.	99+25.23, 5.35' LT.	57.90'	1058.14
151	100+12.55, 19.12' RT.	99+99.83, 75.60' LT.	94.77'	1057.94
152	101+24.88, 20.81' RT.	101+25.58, 40.00' LT.	60.91'	1057.06
153	102+04.06, 20.66' RT.	102+03.88, 40.00' LT.	60.67'	1056.47
154	102+84.06, 20.42' RT.	102+83.88, 40.00' LT.	60.41'	1055.87

### HARVESTER DRIVE SANITARY CONNECTION SCHEDULE

UNIT	CONNECTION AT MAIN	LATERAL TERMINATION	LENGTH	INV. @ MAIN	INV. @ STUB
145	102+45.61, 14.54' RT.	102+45.69, 40.00' RT.	25.46'	1048.37	1048.62
146	101+63.77, 14.79' RT.	101+63.82, 40.00' RT.	25.21'	1049.19	1049.44
147	100+82.71, 7.88' RT.	100+77.50, 40.00' RT.	32.62'	1050.02	1050.34
148	99+83.51, 8.14' RT.	99+92.67, 76.65' RT.	69.12'	1051.04	1051.73
149	99+83.51, 8.14' RT.	99+74.81, 48.52' RT.	57.33'	1051.04	1051.61
150	99+83.51, 8.14' RT.	99+25.71, 16.33' LT.	60.67'	1051.04	1051.71
151	100+06.24, 4.89' RT.	99+94.75, 74.82' LT.	80.47'	1050.93	1051.74
152	101+29.96, 14.53' RT.	101+30.58, 40.00' LT.	54.54'	1049.53	1050.08
153	102+09.05, 14.65' RT.	102+08.88, 40.00' LT.	54.65'	1048.75	1049.30
154	102+89.05, 14.41' RT.	102+88.88, 40.00' LT.	54.41'	1047.94	1048.48



### PROPOSED STRUCTURE TABLE

Structure Name	Structure Details, SEE SHEET 25
CB-DO	ODOT CB No. 3A STA. 102+69.14, 13.00 Rt. RIM = 1059.92 <b>1058.93</b> 12" PVC Pipe INV (W) = 1055.52 <b>1055.27</b> 4" CPP (N) = 1055.87
CB-DP	ODOT CB No. 3A STA. 102+69.11, -13.00 Lt. RIM = 1059.93 <b>1058.92</b> 12" PVC Pipe INV (E) = 1055.55 <b>1055.46</b> 4" CPP (S) = 1057.69
CB-DQ	ODOT CB No. 3 STA. 100+17.64, -43.11 Lt. RIM = 1060.75 <b>1060.75</b> 12" Concrete Pipe INV (E) = 1057.76 <b>1057.44</b> 4" PVC (S) = 1057.69

\* PIPE SHALL BE ENCASED IN CONCRETE PER DETAIL ON SHEET 28 OF 29.

### STORM SEWER

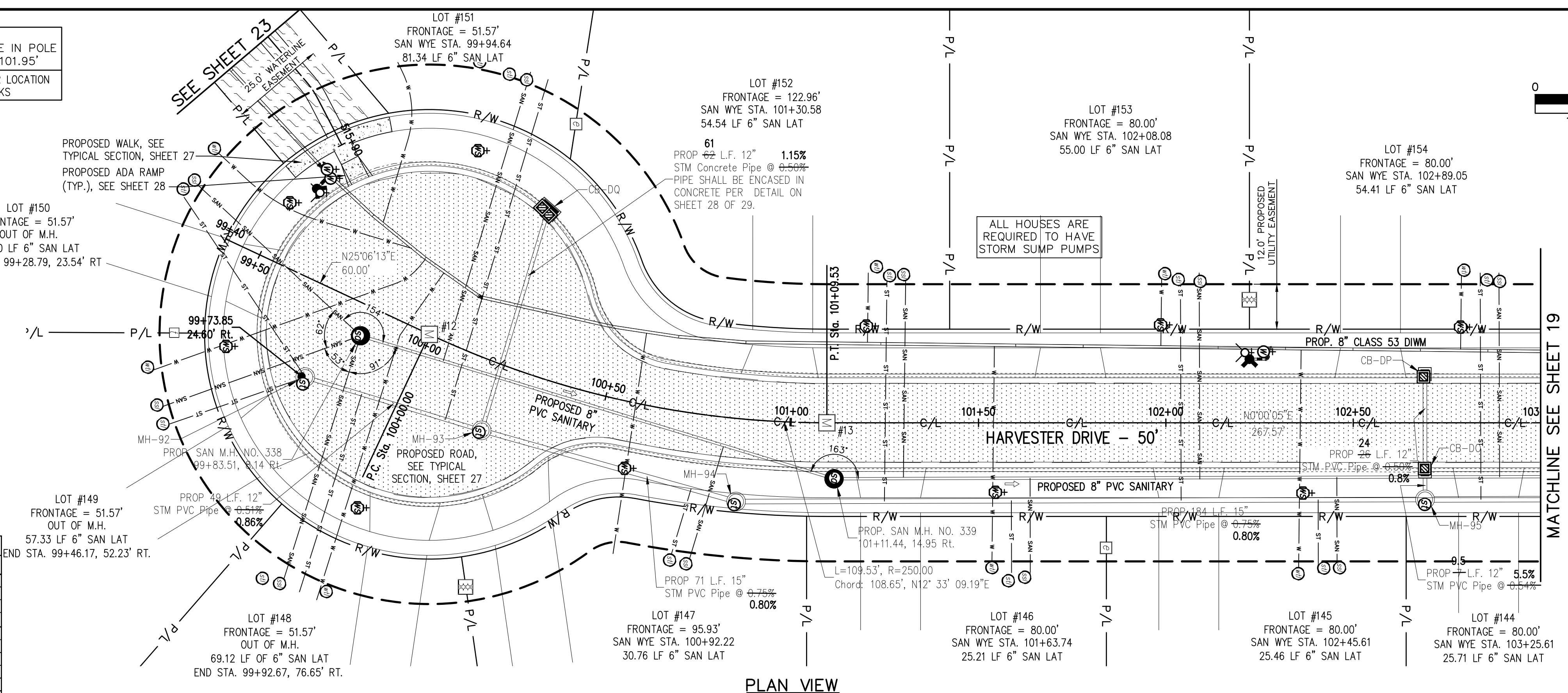
REFER TO GENERAL NOTES SHEET 05 FOR CONSTRUCTION NOTES.  
 ALL RCP PIPE SHALL BE CLASS 4 PER ODOT 706.02  
 ALL HDPE PIPE SHALL BE SMOOTH LINED PER ODOT 707.33  
 ALL PVC PIPE SHALL BE SDR 35 PER ODOT 707.45

### Underground Utilities

2 Working Days Before You Dig  
 Call 800-362-2764 (Toll Free)  
 Ohio Utilities Protection Service  
 Non-members Must Be Called Directly  
 Call 800-925-0988 (Toll Free)  
 Oil & Gas Producers Utility Protection Service

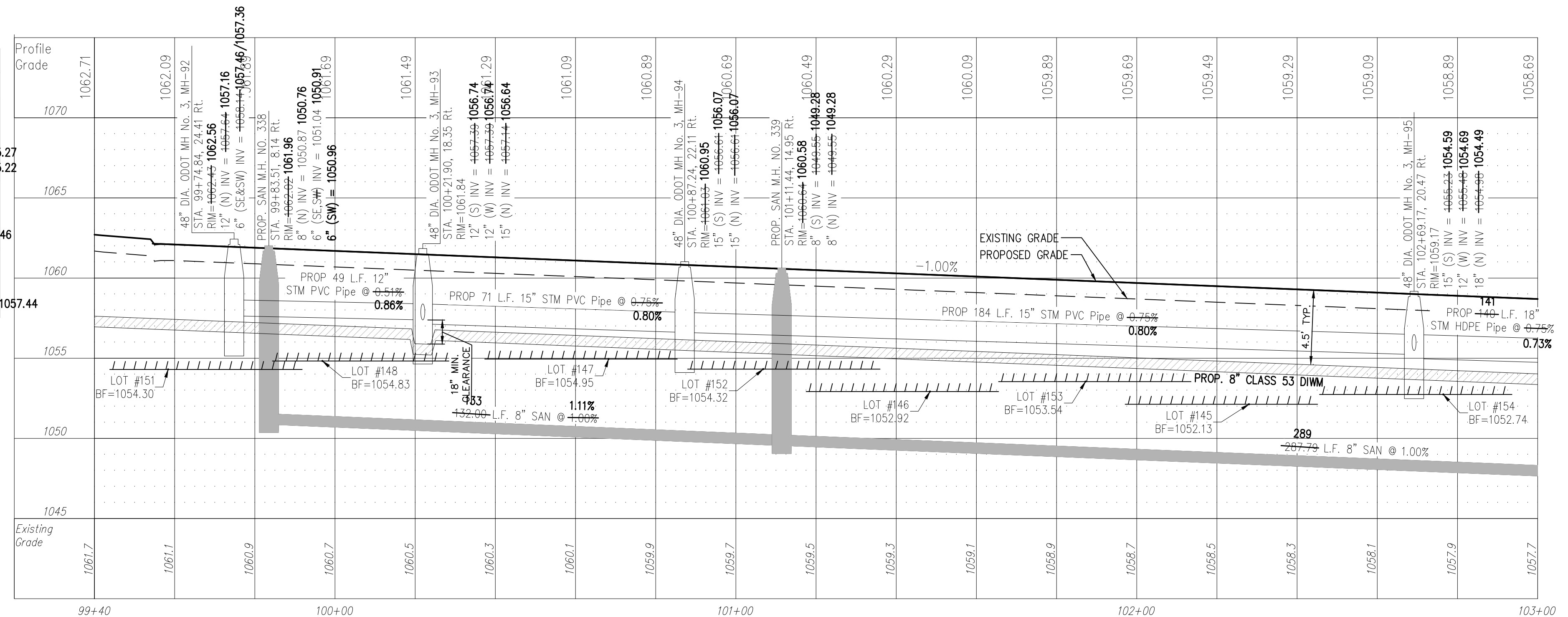
### NOTE:

ALL OIL AND GAS WELL REMOVALS, PLUGGING/CAPPING, AND ABANDONMENTS SHALL BE IN ACCORDANCE WITH ALL ASSOCIATED REGULATIONS FOR SUCH REMOVALS, INCLUDING BUT NOT LIMITED TO, ODNR, LOCAL, STATE, AND FEDERAL.  
 EXISTING HIGH PRESSURE GAS MAIN SHALL BE LOCATED AND PROTECTED PRIOR TO AND THROUGHOUT CONSTRUCTION.



- ### AS-BUILT LEGEND
- AS-BUILT CATCH BASIN
  - AS-BUILT STORM LATERAL TERMINATION
  - AS-BUILT SANITARY MANHOLE
  - AS-BUILT SANITARY LATERAL TERMINATION
  - AS-BUILT HYDRANT
  - AS-BUILT WATER LATERAL TERMINATION
  - AS-BUILT WATER SERVICE VALVE

**NOTE:**  
 ANY SERVICE LATERAL CROSSING WATER MAIN SHALL MAINTAIN 18" MINIMUM CLEARANCE.  
 ALL WATER MAIN PIPE JOINTS WITHIN AREAS OF FILL MUST BE RESTRAINED.



**PROFILE VIEW**  
 HORIZONTAL SCALE: 1"=20'  
 VERTICAL SCALE: 1"=5'

REV.	DATE	DESCRIPTION

THE PRESERVE AT MILLER'S FARM  
 PHASE 4 AS-BUILTS  
 SE CORNER OF SR 18 AND MEDINA LINE RD  
 COPLEY, OHIO 44321

**PLAN AND PROFILE**  
 HARVESTER DRIVE

ISSUED FOR:

PERMIT	
BID	
CONSTRUCTION	
AS-BUILT	01-19-2018

PROJECT MANAGER	DESIGNER
MAL	ALF