

HARVESTER DRIVE MONUMENT BOX SCHEDULE

#	STATION	OFFSET
12	100+00.00	0.00
13	101+09.53	0.00

STATION AND OFFSET TAKEN FROM CONSTRUCTION C/L REFER TO MONUMENT BOX DETAIL SHEET 26

HARVESTER DRIVE WATER MAIN FITTING SCHEDULE

ITEM	STATION	OFFSET
WATER VALVE	99+54.81	28.24' LT.
*6" HYD. ASSEMBLY, TYPE B	99+56.28	22.46' LT.
22.5" BEND	100+08.60	14.67' LT.
*6" HYD. ASSEMBLY, TYPE B	102+22.30	17.00' LT.
45° VERTICAL BEND	100+19.12	
45° VERTICAL BEND	100+19.89	
45° VERTICAL BEND	100+23.89	
45° VERTICAL BEND	100+29.95	

* STATION AND OFFSET TAKEN TO CENTER OF HYDRANT
 NOTE: PROVIDE CONCRETE THRUST BLOCKING ON ALL WATER LINE BENDS PER DETAIL SHEET 29

HARVESTER DRIVE WATER CONNECTION SCHEDULE

UNIT	CONNECTION AT MAIN	LATERAL TERMINATION	LENGTH
145	102+36.09, 19.43' LT.	102+35.41, 40.00' RT.	59.43'
146	101+54.23, 20.41' LT.	101+53.54, 40.00' RT.	60.41'
147	100+57.11, 18.87' LT.	100+60.11, 40.57' RT.	59.52'
148	99+96.52, 15.45' LT.	100+02.14, 76.96' RT.	94.37'
149	99+90.48, 17.51' LT.	99+36.81, 40.35' RT.	79.60'
150	99+85.63, 18.72' LT.	99+27.76, 20.17' LT.	58.93'
151	99+76.13, 21.88' LT.	99+60.00, 63.45' LT.	46.40'
152	101+20.37, 21.46' LT.	101+20.58, 40.00' RT.	18.54'
153	101+98.66, 20.61' LT.	101+98.88, 40.00' RT.	19.39'
154	102+78.65, 19.65' LT.	102+78.88, 39.97' RT.	20.33'

HARVESTER DRIVE STORM CONNECTION SCHEDULE

UNIT	CONNECTION AT MAIN	LATERAL TERMINATION	LENGTH	INVERT
145	102+40.63, 20.55' RT.	102+40.69, 40.00' RT.	19.45'	1056.19
146	101+58.76, 20.80' RT.	101+58.82, 40.00' RT.	19.20'	1056.81
147	100+75.88, 20.11' RT.	100+73.14, 40.00' RT.	20.13'	1057.45
148	99+90.40, 22.14' RT.	99+97.76, 76.97' RT.	55.32'	1058.06
149	99+74.84, 24.41' RT.	99+46.17, 52.23' RT.	39.94'	1058.14
150	99+74.84, 24.41' RT.	99+25.23, 5.35' LT.	57.90'	1058.14
151	100+12.55, 19.12' RT.	99+99.83, 75.00' LT.	94.77'	1057.94
152	101+24.88, 20.91' RT.	101+25.58, 40.00' LT.	60.91'	1057.06
153	102+04.06, 20.66' RT.	102+03.88, 40.00' LT.	60.67'	1056.47
154	102+84.06, 20.42' RT.	102+83.88, 40.00' LT.	60.41'	1055.87

HARVESTER DRIVE SANITARY CONNECTION SCHEDULE

UNIT	CONNECTION AT MAIN	LATERAL TERMINATION	LENGTH	INV. @ MAIN	INV. @ STUB
145	102+45.61, 14.54' RT.	102+45.69, 40.00' RT.	25.46'	1048.37	1048.62
146	101+63.74, 14.79' RT.	101+63.82, 40.00' RT.	25.21'	1049.19	1049.44
147	100+82.71, 7.88' RT.	100+77.50, 40.00' RT.	32.62'	1050.02	1050.34
148	99+83.51, 8.14' RT.	99+92.67, 76.65' RT.	69.12'	1051.04	1051.73
149	99+83.51, 8.14' RT.	99+42.81, 48.52' RT.	57.33'	1051.04	1051.61
150	99+83.51, 8.14' RT.	99+25.71, 10.33' LT.	60.67'	1051.04	1051.71
151	100+06.24, 4.89' RT.	99+94.75, 74.82' LT.	80.47'	1050.93	1051.74
152	101+29.96, 14.53' RT.	101+30.58, 40.00' LT.	54.54'	1049.53	1050.08
153	102+09.05, 14.65' RT.	102+08.88, 40.00' LT.	54.65'	1048.75	1049.30
154	102+89.05, 14.41' RT.	102+88.88, 40.00' LT.	54.41'	1047.94	1048.48

LEGEND
 SEE GENERAL LEGEND, SHEET 04

- PROPOSED ROLLED CURB AND GUTTER
- PROPOSED ADA
- PROPOSED WALK BY OTHERS
- PROPOSED WATER LATERAL
- PROPOSED SANITARY LATERAL
- PROPOSED STORM LATERAL
- PROPOSED WATER MAIN
- PROPOSED SANITARY MAIN
- PROPOSED STORM MAIN
- PROPOSED C/L OF CONSTRUCTION
- PROPOSED C/L OF RIGHT OF WAY
- PROPOSED MONUMENT BOX
- PROPOSED BOTTOM OF FOOTER ELEVATION
- PROPOSED ASPHALT PAVEMENT
- EXISTING DRAINAGE ACCESS EASEMENT
- PROPOSED WATERLINE EASEMENT

PROPOSED STRUCTURE TABLE

Structure Name	Structure Details, SEE SHEET 25
CB-DO	ODOT CB No. 3A STA. 102+69.14, 13.00 Rt. RIM = 1059.02 12" PVC Pipe INV (W)=1055.52 12" PVC Pipe INV (E)=1055.52
CB-DP	ODOT CB No. 3A STA. 102+69.11, -13.00 Lt. RIM = 1059.03 12" PVC Pipe INV (E)=1055.65
CB-DQ	ODOT CB No. 3 STA. 100+17.64, -43.11 Lt. RIM = 1060.73 12" Concrete Pipe INV (E)=1057.70'

* PIPE SHALL BE ENCASED IN CONCRETE PER DETAIL ON SHEET 28 OF 29.

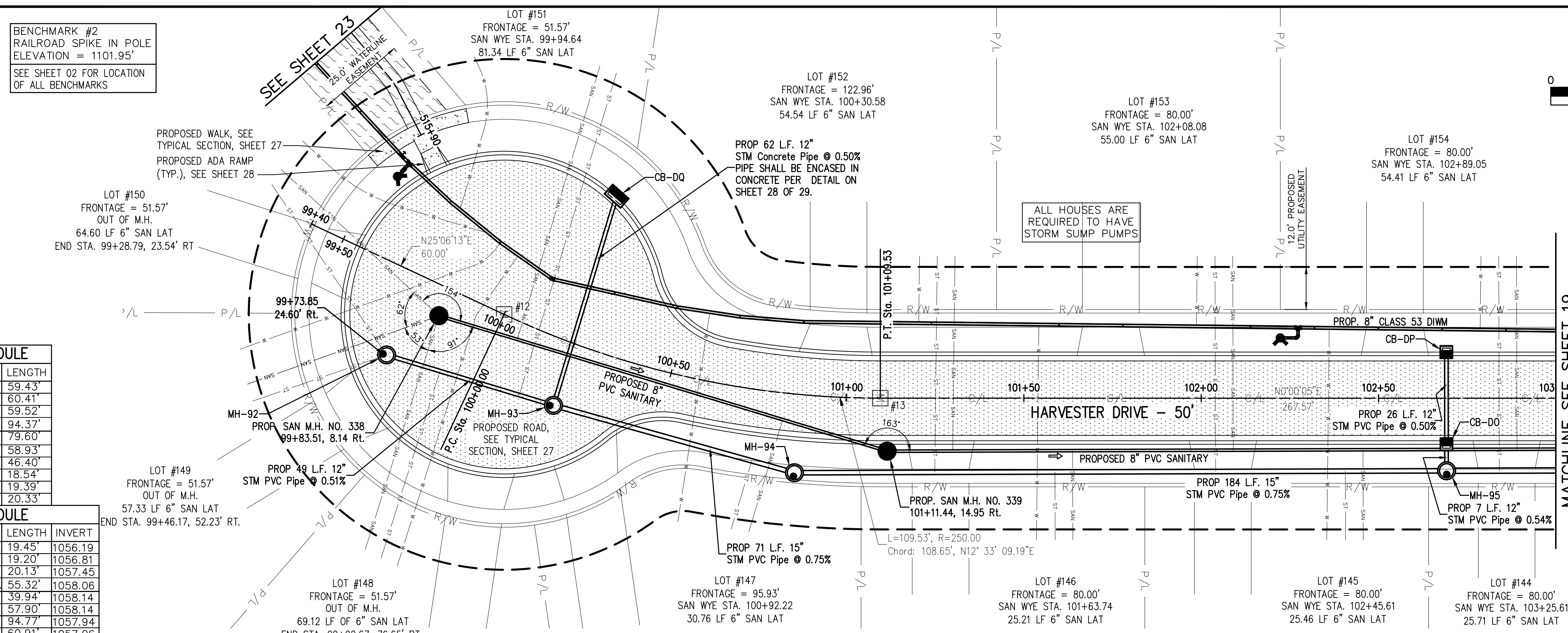
Underground Utilities

2 Working Days Before You Dig
 Call 800-362-2764 (Toll Free)
 Ohio Utilities Protection Service

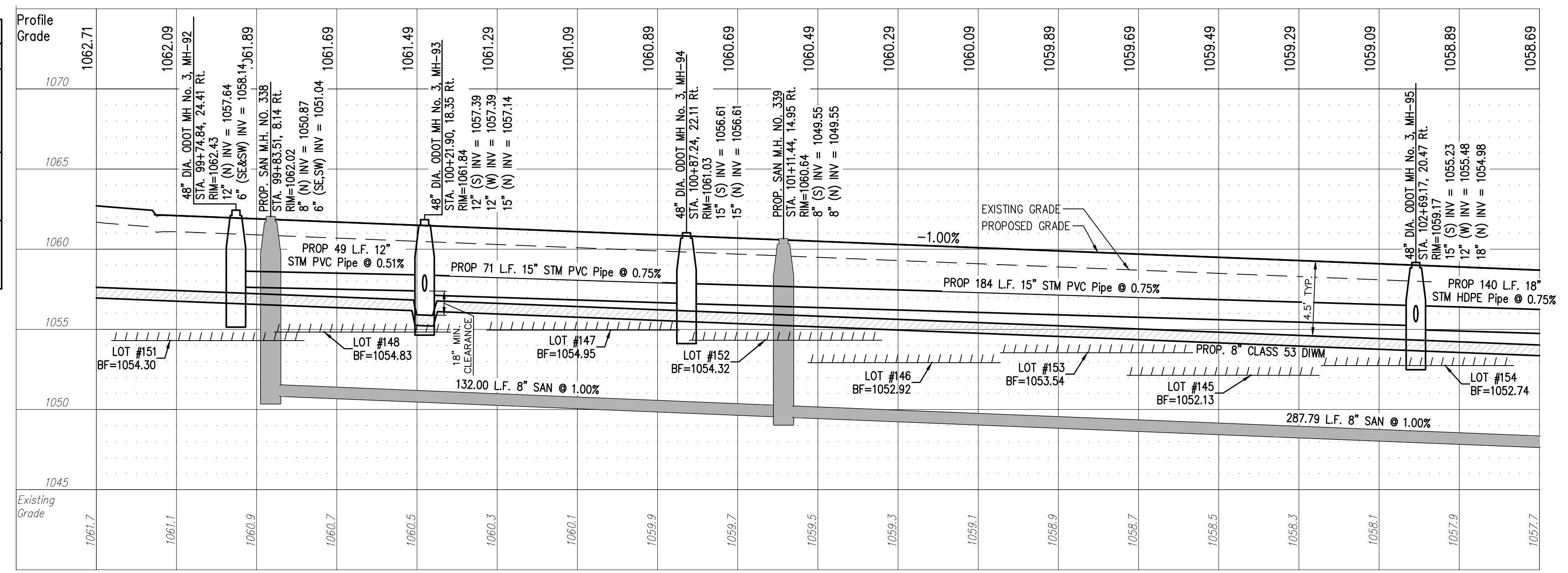
Non-members Must Be Called Directly
 Call 800-925-0988 (Toll Free)
 Oil & Gas Producers Utility Protection Service

STORM SEWER
 REFER TO GENERAL NOTES SHEET 05 FOR CONSTRUCTION NOTES.
 ALL RCP PIPE SHALL BE CLASS 4 PER ODOT 706.02
 ALL HDPE PIPE SHALL BE SMOOTH LINED PER ODOT 707.33
 ALL PVC PIPE SHALL BE SDR 35 PER ODOT 707.45

NOTE:
 ALL OIL AND GAS WELL REMOVALS, PLUGGING/CAPPING, AND ABANDONMENTS SHALL BE IN ACCORDANCE WITH ALL ASSOCIATED REGULATIONS FOR SUCH REMOVALS, INCLUDING BUT NOT LIMITED TO, ODNR, LOCAL, STATE, AND FEDERAL.
 EXISTING HIGH PRESSURE GAS MAIN SHALL BE LOCATED AND PROTECTED PRIOR TO AND THROUGHOUT CONSTRUCTION.



NOTE:
 ANY SERVICE LATERAL CROSSING WATER MAIN SHALL MAINTAIN 18" MINIMUM CLEARANCE.
 ALL WATER MAIN PIPE JOINTS WITHIN AREAS OF FILL MUST BE RESTRAINED.



PROFILE VIEW
 HORIZONTAL SCALE: 1"=20"
 VERTICAL SCALE: 1"=5"

REV.	DATE	DESCRIPTION
01	01/23/17	ISSUED FOR REVIEW
04	04/17/17	REVISED PER AGENCY COMMENTS

THE PRESERVE AT MILLER'S FARM
 PHASE 4
 SE CORNER OF SR 18 AND MEDINA LINE RD
 COPLEY, OHIO 44321

PLAN AND PROFILE
HARVESTER DRIVE

ISSUED FOR:

PERMIT	01/23/17
BID	
CONSTRUCTION	
AS-BUILT	

PROJECT MANAGER: MAL DESIGNER: ALF

JOB NO.
2013258.04

18/29