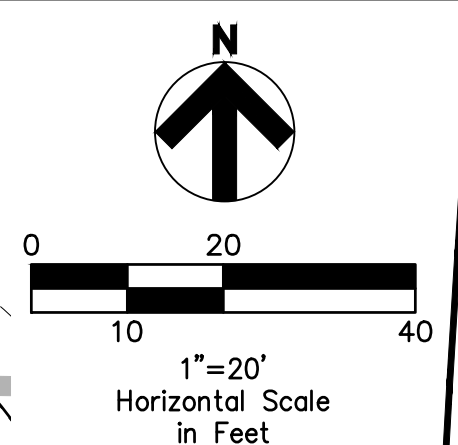


**LEGEND**  
 (SEE GENERAL LEGEND, SHEET 04)

- EXISTING RIPARIAN SETBACK
- - - PHASE 3 INTERMEDIATE CONTOURS
- ▒▒▒▒▒▒▒▒ PHASE LIMITS
- ▨▨▨▨▨▨▨▨ EXISTING DRAINAGE ACCESS EASEMENT



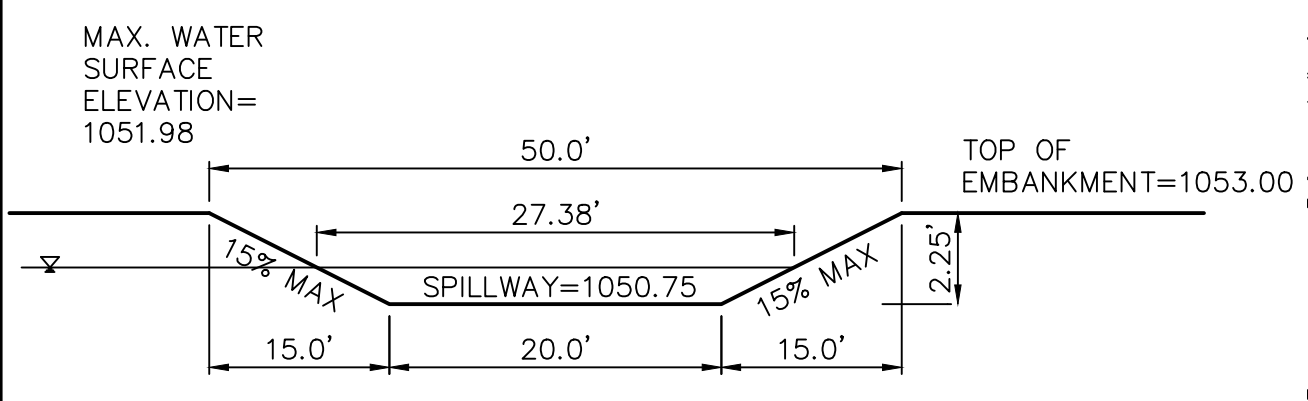
**Underground Utilities**

2 Working Days Before You Dig  
 Call 800-362-2764 (Toll Free)  
 Ohio Utilities Protection Service

Non-members Must Be Called Directly  
 Call 800-925-0988 (Toll Free)  
 Oil & Gas Producers Utility Protection Service

**NOTE:**  
 ALL OIL AND GAS WELL REMOVALS, PLUGGING/CAPPING, AND ABANDONMENTS SHALL BE IN ACCORDANCE WITH ALL ASSOCIATED REGULATIONS FOR SUCH REMOVALS, INCLUDING BUT NOT LIMITED TO, ODNR, LOCAL, STATE, AND FEDERAL.

EXISTING HIGH PRESSURE GAS MAIN SHALL BE LOCATED AND PROTECTED PRIOR TO AND THROUGHOUT CONSTRUCTION.



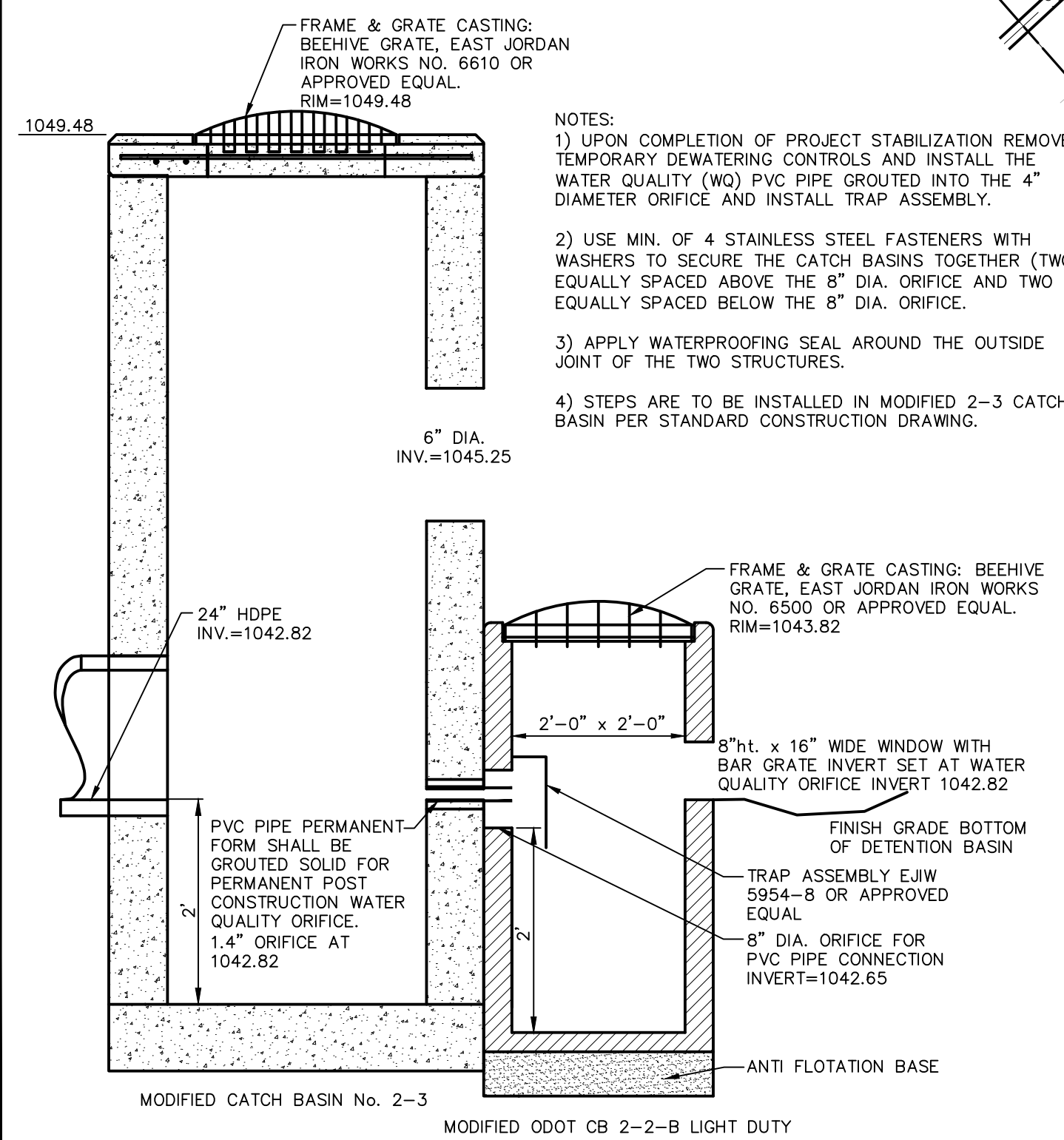
**NOTE:** THE EMERGENCY SPILLWAY SHALL HAVE A 4' WIDE CONCRETE SECTION EQUAL TO THE 4" CONCRETE WALK ON DETAIL SHEET 27, WITH A MEDIUM BROOM FINISH CENTERED IN THE SPILLWAY ACROSS THE LENGTH BETWEEN MAXIMUM WATER SURFACE ELEVATIONS.

**EMERGENCY SPILLWAY  
 (INSTALLED IN PREVIOUS PHASE)**  
 N.T.S.

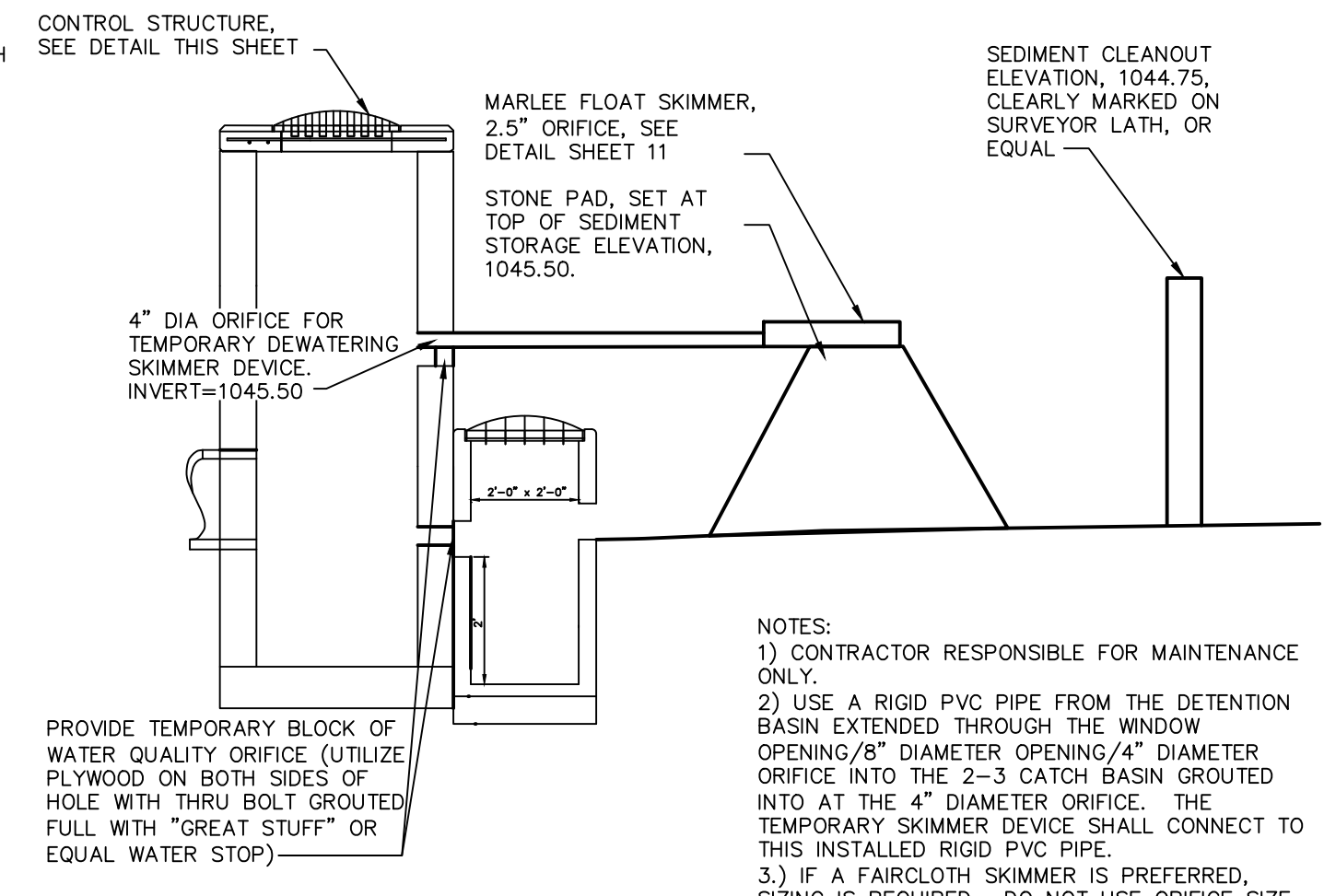
**EXTENDED DETENTION BASIN D**

10 YEAR HWE= 1049.07  
 100 YEAR HWE= 1050.61

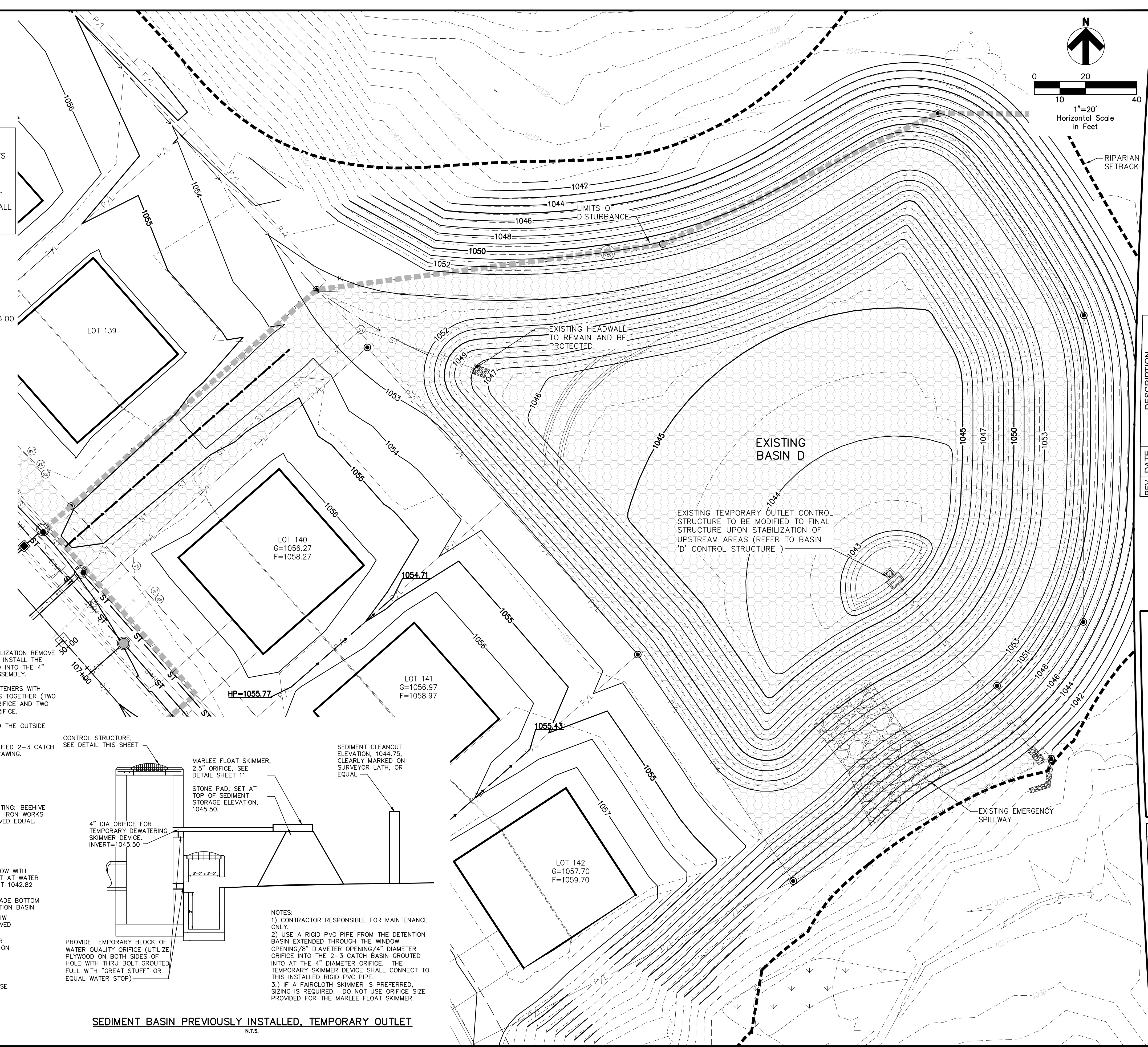
WATER QUALITY VOLUME ELEVATION= 1045.25  
 WATER QUALITY VOLUME REQUIRED= 14,650 CUFT  
 WATER QUALITY VOLUME PROVIDED= 15,484 CUFT



**BASIN "D" CONTROL STRUCTURE**  
 N.T.S.



**SEDIMENT BASIN PREVIOUSLY INSTALLED, TEMPORARY OUTLET**  
 N.T.S.



REV.	DATE	DESCRIPTION
01	01/23/17	ISSUED FOR REVIEW
04	04/17/17	REVISED PER AGENCY COMMENTS

THE PRESERVE AT MILLER'S FARM  
 PHASE 4  
 SE CORNER OF SR 18 AND MEDINA LINE RD  
 COPLEY, OHIO 44321

**BASIN D  
 MODIFICATIONS PLAN**

ISSUED FOR:	
PERMIT	01/23/17
BID	
CONSTRUCTION	
AS-BUILT	
PROJECT MANAGER	DESIGNER
MAL	ALF

JOB NO.  
**2013258.04**

**16/29**