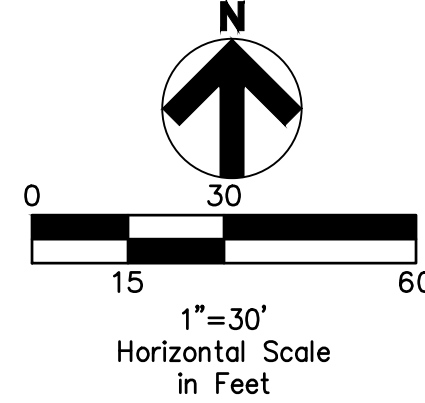


LEGEND
 (SEE GENERAL LEGEND, SHEET 04)

- XXX--- PHASE 1 INTERMEDIATE CONTOURS
- XXX- PROPOSED CONTOURS
- PHASE LINES/ LIMIT OF DISTURBANCE
- G=XXXX.XX GARAGE ELEVATION
- F=XXXX.XX FINISHED FLOOR ELEVATION
- PROPOSED SWALE
- PROPOSED 100 YEAR FLOW PATH
- R=XXXX.XX PROPOSED RIM ELEVATION
- - - - - RIPARIAN SETBACK
- - - - - EXISTING STREAM
- [Pattern] DRAINAGE ACCESS EASEMENT
- [Pattern] EXISTING WETLAND
- [Pattern] PROPOSED WATERLINE EASEMENT



NOTE:
 ALL OIL AND GAS WELL REMOVALS, PLUGGING/CAPPING, AND ABANDONMENTS SHALL BE IN ACCORDANCE WITH ALL ASSOCIATED REGULATIONS FOR SUCH REMOVALS, INCLUDING BUT NOT LIMITED TO, ODNR, LOCAL, STATE, AND FEDERAL.

EXISTING HIGH PRESSURE GAS MAIN SHALL BE LOCATED AND PROTECTED PRIOR TO AND THROUGHOUT CONSTRUCTION.

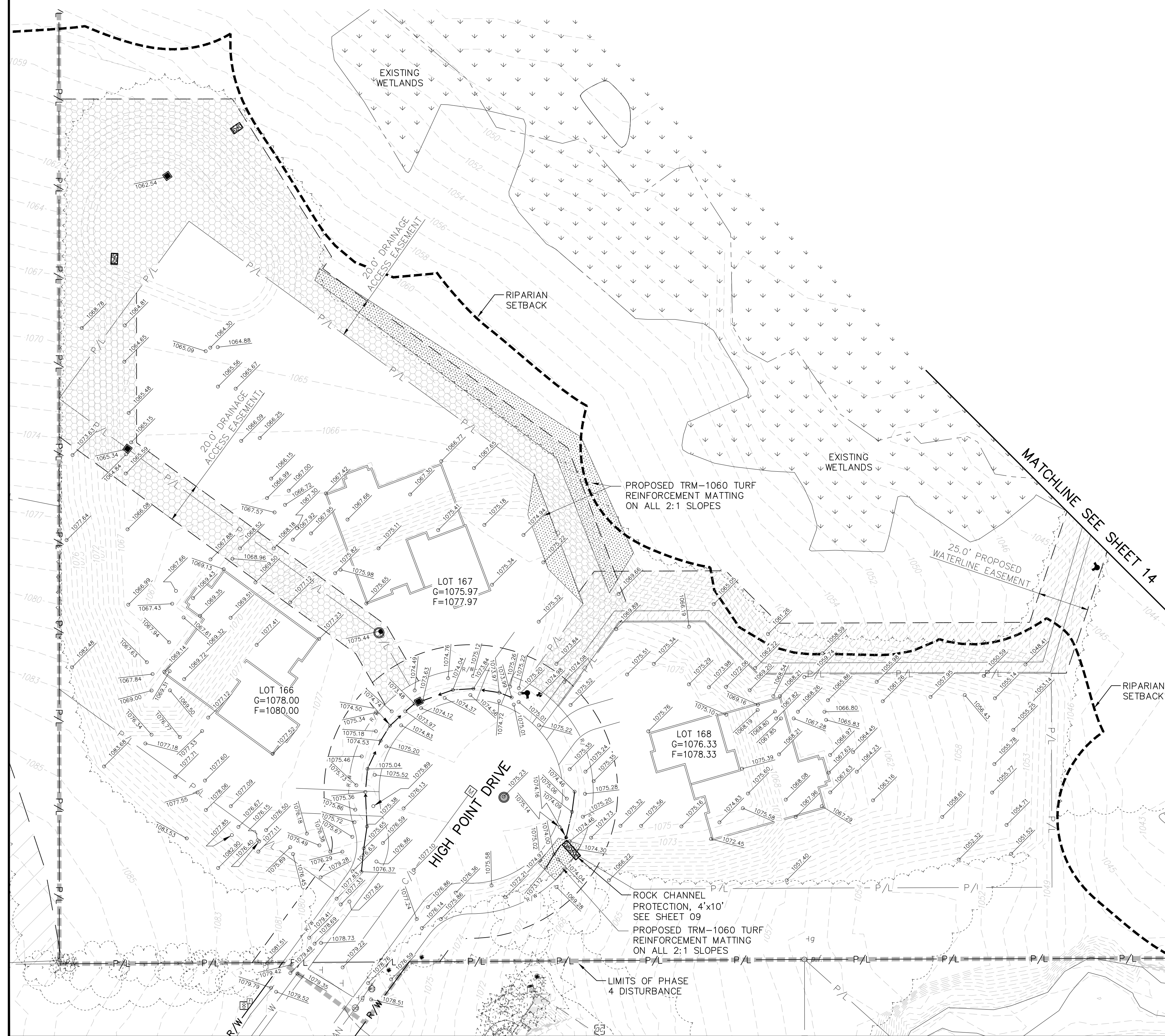
Underground Utilities

2 Working Days Before You Dig
 Call 800-362-2764 (Toll Free)
 Ohio Utilities Protection Service

Non-members Must Be Called Directly

Call 800-925-0988 (Toll Free)
 Oil & Gas Producers Utility Protection Service

NOTE:
 EACH SUBLLOT MUST ROUTE ALL STORMWATER DRAINAGE FROM A CONDUIT TO THE STORM SEWER LATERAL PROVIDED. NO OPEN DISCHARGES FROM A HOUSE CONDUIT ARE PERMITTED.



REV.	DATE	DESCRIPTION

**THE PRESERVE AT MILLER'S FARM
 PHASE 4 AS-BUILTS**
 SE CORNER OF SR 18 AND MEDINA LINE RD
 COPLEY, OHIO 44321

FINAL GRADING PLAN
HIGH POINT DRIVE

ISSUED FOR:	
PERMIT	
BID	
CONSTRUCTION	
AS-BUILT	01-19-2018
PROJECT MANAGER	DESIGNER
MAL	ALF

JOB NO.
2013258.04