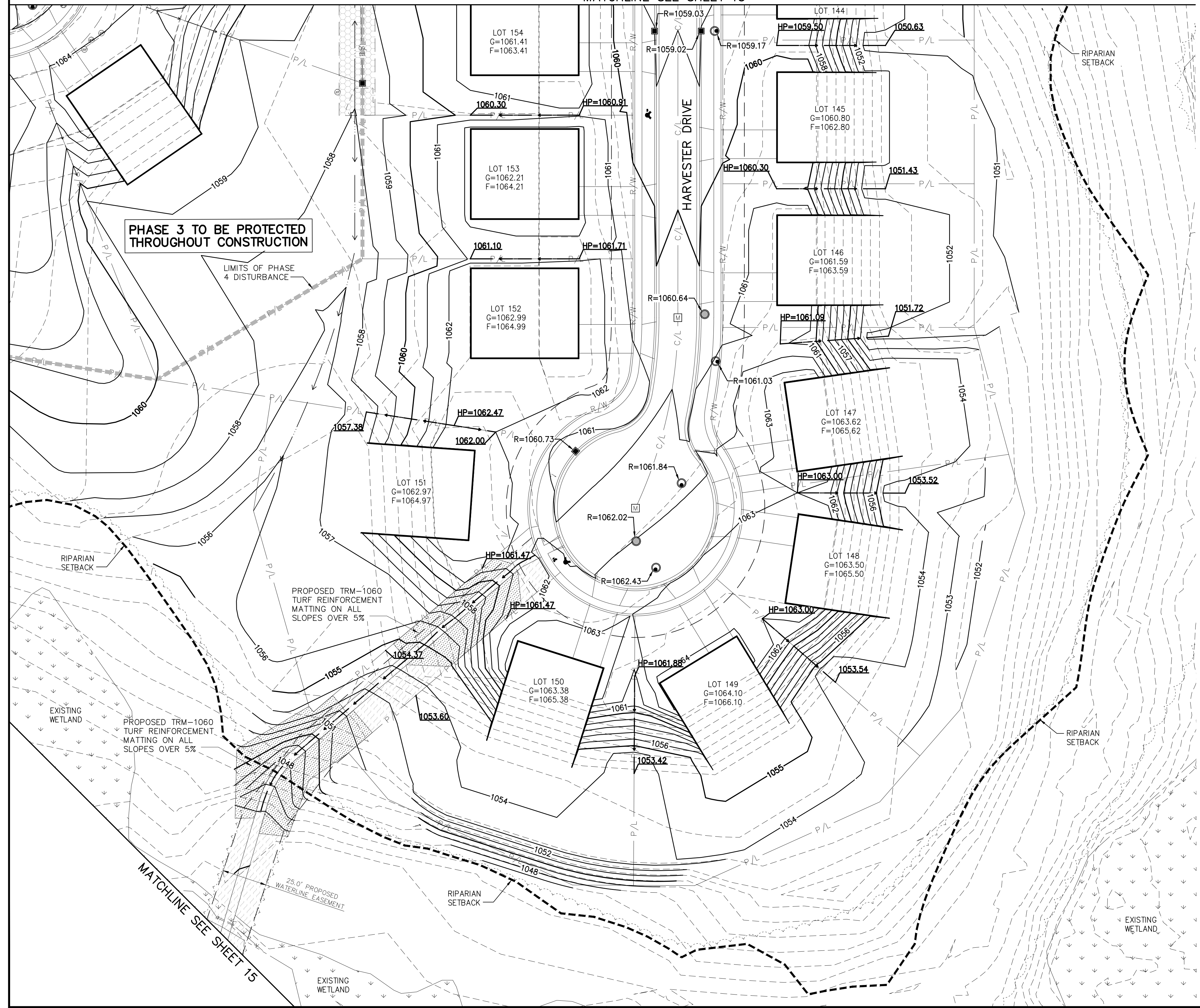


MATCHLINE SEE SHEET 13



PHASE 3 TO BE PROTECTED THROUGHOUT CONSTRUCTION

LIMITS OF PHASE 4 DISTURBANCE

PROPOSED TRM-1060 TURF REINFORCEMENT MATTING ON ALL SLOPES OVER 5%

PROPOSED TRM-1060 TURF REINFORCEMENT MATTING ON ALL SLOPES OVER 5%

25.0' PROPOSED WATERLINE EASEMENT

LEGEND

- (SEE GENERAL LEGEND, SHEET 04)
- - - - - PHASE 1 INTERMEDIATE CONTOURS
 - - - - - PROPOSED CONTOURS
 - - - - - PHASE LINES/ LIMIT OF DISTURBANCE
 - G=XXXX.XX GARAGE ELEVATION
 - F=XXXX.XX FINISHED FLOOR ELEVATION
 - - - - - PROPOSED SWALE
 - - - - - PROPOSED 100 YEAR FLOW PATH
 - R=XXXX.XX PROPOSED RIM ELEVATION
 - - - - - RIPARIAN SETBACK
 - - - - - EXISTING STREAM
 - [Pattern] DRAINAGE ACCESS EASEMENT
 - [Pattern] EXISTING WETLAND
 - [Pattern] PROPOSED WATERLINE EASEMENT

NOTE:
 ALL OIL AND GAS WELL REMOVALS, PLUGGING/CAPPING, AND ABANDONMENTS SHALL BE IN ACCORDANCE WITH ALL ASSOCIATED REGULATIONS FOR SUCH REMOVALS, INCLUDING BUT NOT LIMITED TO, ODNR, LOCAL, STATE, AND FEDERAL.
 EXISTING HIGH PRESSURE GAS MAIN SHALL BE LOCATED AND PROTECTED PRIOR TO AND THROUGHOUT CONSTRUCTION.

NOTE:
 EACH SUBLOT MUST ROUTE ALL STORMWATER DRAINAGE FROM A CONDUIT TO THE STORM SEWER LATERAL PROVIDED. NO OPEN DISCHARGES FROM A HOUSE CONDUIT ARE PERMITTED.

Underground Utilities

2 Working Days
 Before You Dig
 Call 800-362-2764 (Toll Free)
 Ohio Utilities Protection Service

Non-members
 Must Be Called Directly
 Call 800-925-0988 (Toll Free)
 Oil & Gas Producers Utility Protection Service

REV.	DATE	DESCRIPTION
01/23/17		ISSUED FOR REVIEW
04/17/17		REVISED PER AGENCY COMMENTS

THE PRESERVE AT MILLER'S FARM
 PHASE 4
 SE CORNER OF SR 18 AND MEDINA LINE RD
 COPLEY, OHIO 44321

FINAL GRADING PLAN

SOUTH

ISSUED FOR:	
PERMIT	01/23/17
BID	
CONSTRUCTION	
AS-BUILT	
PROJECT MANAGER	DESIGNER
MAL	ALF

JOB NO.
2013258.04

14/29