

- LEGEND**  
 (SEE GENERAL LEGEND, SHEET 04)
- PHASE 1 INTERMEDIATE CONTOURS
  - PROPOSED CONTOURS
  - PHASE LINES/ LIMIT OF DISTURBANCE
  - G=XXXX.XX GARAGE ELEVATION
  - F=XXXX.XX FINISHED FLOOR ELEVATION
  - PROPOSED SWALE
  - PROPOSED 100 YEAR FLOW PATH
  - R=XXXX.XX PROPOSED RIM ELEVATION
  - RIPARIAN SETBACK
  - EXISTING STREAM
  - DRAINAGE ACCESS EASEMENT
  - EXISTING WETLAND

**NOTE:**  
 ALL OIL AND GAS WELL REMOVALS, PLUGGING/CAPPING, AND ABANDONMENTS SHALL BE IN ACCORDANCE WITH ALL ASSOCIATED REGULATIONS FOR SUCH REMOVALS, INCLUDING BUT NOT LIMITED TO, ODNR, LOCAL, STATE, AND FEDERAL.

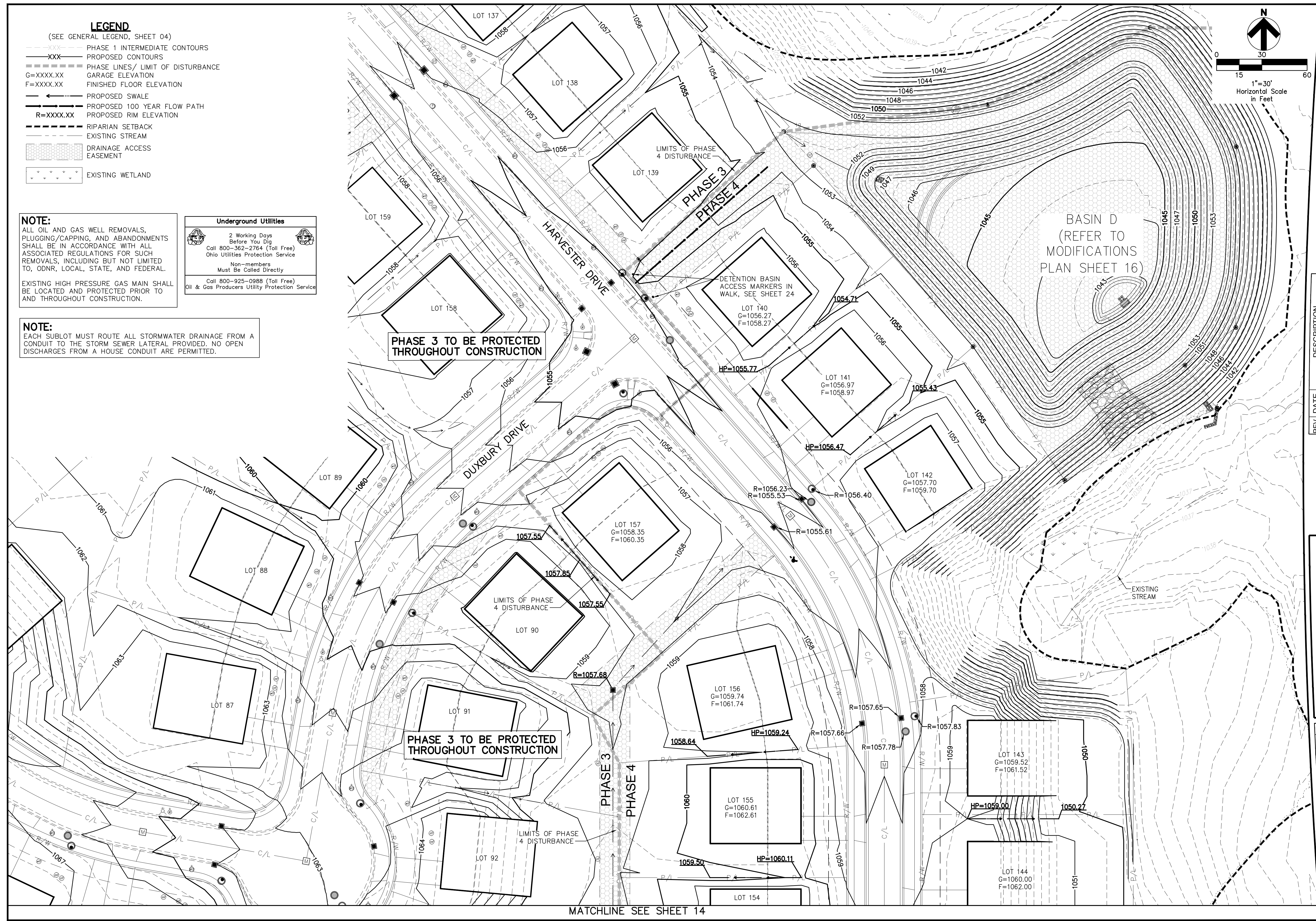
EXISTING HIGH PRESSURE GAS MAIN SHALL BE LOCATED AND PROTECTED PRIOR TO AND THROUGHOUT CONSTRUCTION.

**Underground Utilities**

2 Working Days Before You Dig  
 Call 800-362-2764 (Toll Free)  
 Ohio Utilities Protection Service

Non-members Must Be Called Directly  
 Call 800-925-0988 (Toll Free)  
 Oil & Gas Producers Utility Protection Service

**NOTE:**  
 EACH SUBLot MUST ROUTE ALL STORMWATER DRAINAGE FROM A CONDUIT TO THE STORM SEWER LATERAL PROVIDED. NO OPEN DISCHARGES FROM A HOUSE CONDUIT ARE PERMITTED.



REV.	DATE	DESCRIPTION
01	01/23/17	ISSUED FOR REVIEW
04	04/17/17	REVISED PER AGENCY COMMENTS

THE PRESERVE AT MILLER'S FARM  
 PHASE 4  
 SE CORNER OF SR 18 AND MEDINA LINE RD  
 COPLEY, OHIO 44321

**FINAL GRADING PLAN**  
 NORTH

ISSUED FOR:	
PERMIT	01/23/17
BID	
CONSTRUCTION	
AS-BUILT	
PROJECT MANAGER	DESIGNER
MAL	ALF

JOB NO.  
**2013258.04**

**13/29**

MATCHLINE SEE SHEET 14