

NOTE:
 ANY SERVICE LATERAL CROSSING WATER MAIN SHALL MAINTAIN 18" MINIMUM CLEARANCE.
 ALL WATER MAIN PIPE JOINTS WITHIN AREAS OF FILL MUST BE RESTRAINED.

HARVESTER DRIVE MONUMENT BOX SCHEDULE

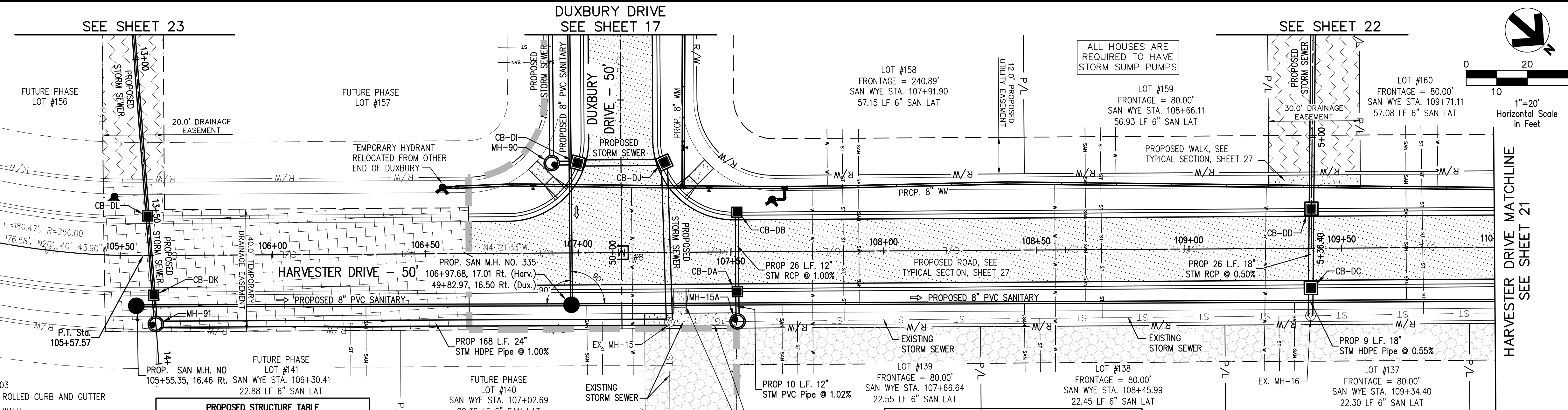
#	STATION	OFFSET
8	50+00.00	0.00 DUXBURY
	107+14.18	0.00 HARVESTER

STATION AND OFFSET TAKEN FROM CONSTRUCTION C/L

BENCHMARK #2
 RAILROAD SPIKE IN POLE
 ELEVATION = 1101.95'
 SEE SHEET 02 FOR LOCATION OF ALL BENCHMARKS

LEGEND
 SEE GENERAL LEGEND, SHEET 03

	PROPOSED ROLLED CURB AND GUTTER
	PROPOSED WALK
	PROPOSED WALK BY OTHERS
	PROPOSED WATER LATERAL
	PROPOSED SANITARY LATERAL
	PROPOSED STORM LATERAL
	PROPOSED WATER MAIN
	PROPOSED SANITARY MAIN
	PROPOSED STORM MAIN
	PROPOSED C/L OF CONSTRUCTION
	PROPOSED C/L OF RIGHT OF WAY
	PROPOSED MONUMENT BOX
	PROPOSED BOTTOM OF FOOTER ELEVATION
	PROPOSED ASPHALT PAVEMENT
	PROPOSED DRAINAGE ACCESS EASEMENT
	PHASE 1 DRAINAGE ACCESS EASEMENT



PROPOSED STRUCTURE TABLE

Structure Name	Structure Details, SEE SHEET 25
CB-DA	ODOT CB No. 3 STA. 107+52, 13.00 Rt. RIM = 1054.82 12" RCP INV (SW)=1051.03 12" PVC Pipe INV (NE)=1051.03
CB-DB	ODOT CB No. 3 STA. 107+52, -13.00 Lt. RIM = 1054.82 12" RCP INV (NE)=1051.29
CB-DC	ODOT CB No. 3 STA. 109+39.79, 13.00 Rt. RIM = 1056.07 18" RCP INV (SW)=1051.92 18" HDPE Pipe INV (NE)=1051.92
CB-DD	ODOT CB No. 3 STA. 109+40.16, -13.00 Lt. RIM = 1056.08 18" HDPE Pipe INV (SW)=1052.05 18" RCP INV (NE)=1052.05

HARVESTER DRIVE STORM CONNECTION SCHEDULE

UNIT	CONNECTION AT MAIN	LATERAL TERMINATION	LENGTH	INVERT
137	109+29.29, 22.13' Rt.	109+29.36, 40.00 Rt.	17.86'	1052.79
138	108+51.01, 22.43' Rt.	108+51.07, 40.00 Rt.	17.57'	1052.18
139	107+71.63, 22.73' Rt.	107+71.70, 40.01 Rt.	17.28'	1051.57
140	107+07.71, 22.84' Rt.	107+07.76, 40.00 Rt.	17.14'	1051.98
141	106+25.39, 22.66' Rt.	106+25.32, 40.00 Rt.	17.30'	1052.80
158	107+86.92, 22.67' Rt.	107+86.68, 40.00 Lt.	62.67'	1051.69
159	108+71.43, 22.35' Rt.	108+71.19, 40.00 Lt.	62.35'	1052.34
160	109+76.70, 21.78' Rt.	109+76.19, 40.00 Lt.	61.79'	1053.52

HARVESTER DRIVE SANITARY CONNECTION SCHEDULE

UNIT	CONNECTION AT MAIN	LATERAL TERMINATION	LENGTH	INV. @ MAIN	INV. @ STUB	VERT. RISER HT	45' LENGTH
137	109+34.40, 17.70' Rt.	109+34.36, 40.00 Rt.	22.30'	1043.82	1047.01	3.0'	4.24'
138	108+45.99, 17.57' Rt.	108+46.07, 40.00 Rt.	22.45'	1044.22	1044.45		
139	107+66.64, 17.45' Rt.	107+66.60, 40.00 Rt.	22.55'	1044.58	1044.81		
140	107+02.69, 17.35' Rt.	107+02.76, 40.00 Rt.	22.36'	1044.70	1044.92		
141	106+30.41, 17.08' Rt.	106+30.32, 40.00 Rt.	22.88'	1045.02	1045.25		
158	107+91.90, 17.15' Rt.	107+91.99, 40.00 Lt.	57.15'	1044.46	1045.04		
159	108+66.11, 16.93' Rt.	108+66.19, 40.00 Lt.	56.93'	1044.13	1047.67	3.0'	4.24'
160	109+71.11, 17.08' Rt.	109+71.19, 40.00 Lt.	57.08'	1043.66	1047.70	3.5'	4.95'

HARVESTER DRIVE WATER CONNECTION SCHEDULE

UNIT	CONNECTION AT MAIN	LATERAL TERMINATION	LENGTH
137	109+25.43, 20.18' Lt.	109+24.36, 40.00 Rt.	60.19'
138	108+56.16, 21.40' Lt.	108+56.07, 40.00 Rt.	61.40'
139	107+76.70, 20.55' Lt.	107+76.70, 40.00 Rt.	60.54'
140	107+17.55, 21.31' Lt.	107+17.76, 40.00 Rt.	61.30'
158	107+81.70, 21.39' Lt.	107+81.70, 40.00 Lt.	18.61'
159	108+75.87, 21.77' Lt.	108+76.19, 40.00 Lt.	18.23'
160	109+81.36, 19.87' Lt.	109+81.71, 40.00 Lt.	20.14'

NOTE:
 ALL OIL AND GAS WELL REMOVALS, PLUGGING/CAPPING, AND ABANDONMENTS SHALL BE IN ACCORDANCE WITH ALL ASSOCIATED REGULATIONS FOR SUCH REMOVALS, INCLUDING BUT NOT LIMITED TO, ODNR, LOCAL, STATE, AND FEDERAL.
 EXISTING HIGH PRESSURE GAS MAIN SHALL BE LOCATED AND PROTECTED PRIOR TO AND THROUGHOUT CONSTRUCTION.

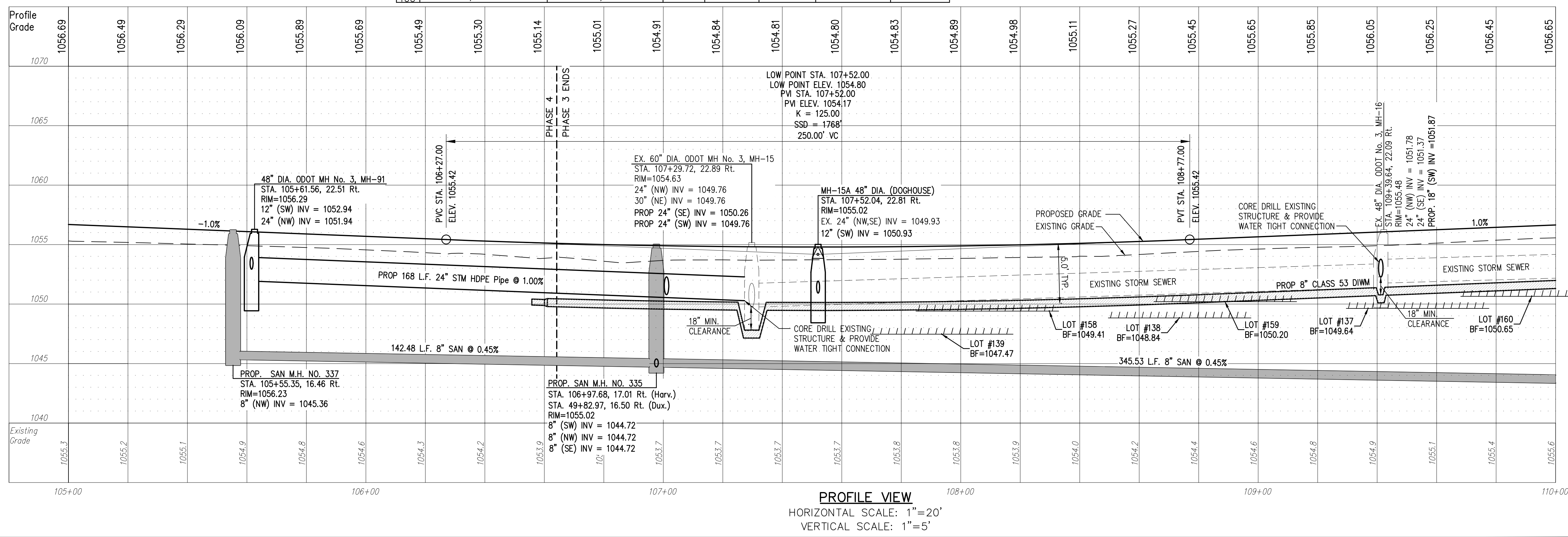
Underground Utilities

2 Working Days Before You Dig
 Call 800-362-2764 (Toll Free)
 Ohio Utilities Protection Service
 Non-members Must Be Called Directly
 Call 800-925-0888 (Toll Free)
 Oil & Gas Producers Utility Protection Service

HARVESTER DRIVE WATER MAIN FITTING SCHEDULE

ITEM	STATION	OFFSET
*6" RELOCATED TEMP HYD.	106+55.80	21.67' LL
8" X 6" REDUCER	106+60.47	21.76' LL
WATER VALVE	106+85.39	22.26' LL
8" X 8" TEE	107+34.47	21.39' LL
WATER VALVE	107+43.00	21.24' LL
*6" HYD. ASSEMBLY, TYPE B	107+63.64	17.09' LL
45" VERTICAL BEND	107+24.78	
45" VERTICAL BEND	107+26.98	
45" VERTICAL BEND	107+32.39	
45" VERTICAL BEND	107+34.86	
45" VERTICAL BEND	109+39.51	
45" VERTICAL BEND	109+40.32	
45" VERTICAL BEND	109+42.37	
45" VERTICAL BEND	109+42.99	

* STATION AND OFFSET TAKEN TO CENTER OF HYDRANT



REV.	DATE	DESCRIPTION
06/10/16		REVISED PER AGENCY COMMENTS
7/11/16		REVISED PER COUNTY COMMENTS

THE PRESERVE AT MILLER'S FARM
 PHASE 3
 SE CORNER OF SR 18 AND MEDINA LINE RD
 COPLEY, OHIO 44321

PLAN AND PROFILE
 HARVESTER DRIVE

ISSUED FOR:

PERMIT	04-06-2016
BID	
CONSTRUCTION	
AS-BUILT	

PROJECT MANAGER	DESIGNER
MAL	ALF

JOB NO.
2013258.03

20/29