

**NOTE:**  
 ANY SERVICE LATERAL CROSSING WATER MAIN SHALL MAINTAIN 18" MINIMUM CLEARANCE.  
 ALL WATER MAIN PIPE JOINTS WITHIN AREAS OF FILL MUST BE RESTRAINED.

**HARVESTER DRIVE MONUMENT BOX SCHEDULE**

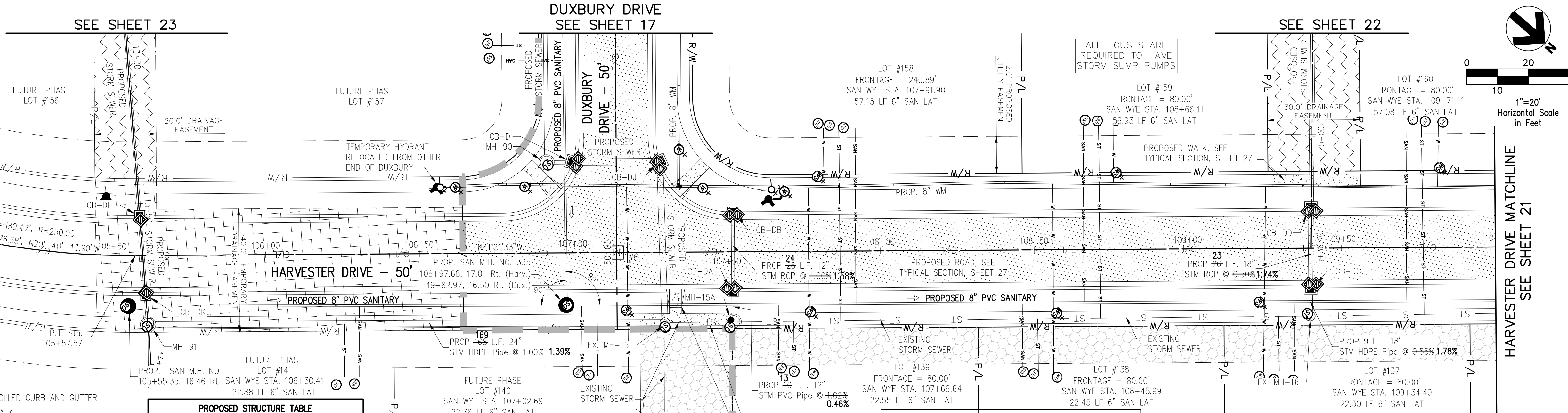
#	STATION	OFFSET
8	50+00.00	0.00 DUXBURY
	107+14.18	0.00 HARVESTER

STATION AND OFFSET TAKEN FROM CONSTRUCTION C/L

**BENCHMARK #2**  
 RAILROAD SPIKE IN POLE  
 ELEVATION = 1101.95'  
 SEE SHEET 02 FOR LOCATION OF ALL BENCHMARKS

**LEGEND**  
 SEE GENERAL LEGEND, SHEET 03

- PROPOSED ROLLED CURB AND GUTTER
- PROPOSED WALK
- PROPOSED WALK BY OTHERS
- PROPOSED WATER LATERAL
- PROPOSED SANITARY LATERAL
- PROPOSED STORM LATERAL
- PROPOSED WATER MAIN
- PROPOSED SANITARY MAIN
- PROPOSED STORM MAIN
- PROPOSED C/L OF CONSTRUCTION
- PROPOSED C/L OF RIGHT OF WAY
- PROPOSED MONUMENT BOX
- PROPOSED BOTTOM OF FOOTER ELEVATION
- PROPOSED ASPHALT PAVEMENT
- PROPOSED DRAINAGE ACCESS EASEMENT
- PHASE 1 DRAINAGE ACCESS EASEMENT



**PROPOSED STRUCTURE TABLE**

Structure Name	Structure Details, SEE SHEET 25
CB-DA	ODOT CB No. 3 STA. 107+52, 13.00 Rt. RIM = 1054.82 1054.46 12" RCP INV (SW) = 1051.03 1051.16 12" PVC Pipe INV (NE) = 1051.03 1051.16 4" CPP (N) INV = 1052.01 1051.11
CB-DB	ODOT CB No. 3 STA. 107+52, -13.00 Lt. RIM = 1054.82 1054.44 12" RCP INV (NE) = 1051.23 1051.54 4" CPP (N) INV = 1051.94 1051.44
CB-DC	ODOT CB No. 3 STA. 109+39.79, 13.00 Rt. RIM = 1056.07 1055.73 18" RCP INV (SW) = 1051.92 1052.03 18" HDPE Pipe INV (NE) = 1051.92 1052.03 4" CPP (N) INV = 1053.03 1052.03
CB-DD	ODOT CB No. 3 STA. 109+40.16, -13.00 Lt. RIM = 1056.06 1055.73 1052.43 18" HDPE Pipe INV (SW) = 1052.05 1052.43 18" RCP INV (NE) = 1052.05 1052.43 4" CPP (S) INV = 1053.43 1052.43

**HARVESTER DRIVE STORM CONNECTION SCHEDULE**

UNIT	CONNECTION AT MAIN	LATERAL TERMINATION	LENGTH	INVERT
137	109+29.29, 22.13' Rt.	109+29.36, 40.00 Rt.	17.86'	1052.79
138	108+51.01, 22.43' Rt.	108+51.07, 40.00 Rt.	17.87'	1052.18
139	107+71.63, 22.73' Rt.	107+71.70, 40.00 Rt.	17.28'	1051.57
140	107+07.71, 22.84' Rt.	107+07.76, 40.00 Rt.	17.14'	1051.98
141	106+25.39, 22.66' Rt.	106+25.32, 40.00 Rt.	17.30'	1052.80
158	107+86.92, 22.67' Rt.	107+86.68, 40.00 Lt.	62.67'	1051.69
159	108+71.43, 22.35' Rt.	108+71.19, 40.00 Lt.	62.55'	1052.34
160	109+76.70, 21.78' Rt.	109+76.19, 40.00 Lt.	61.79'	1053.52

**HARVESTER DRIVE SANITARY CONNECTION SCHEDULE**

UNIT	CONNECTION AT MAIN	LATERAL TERMINATION	LENGTH	INV. @ MAIN	INV. @ STUB	VERT. RISER HT	45' LENGTH
137	109+34.40, 17.70' Rt.	109+34.36, 40.00 Rt.	22.30'	1043.82	1047.01	3.0'	4.24'
138	108+45.99, 17.57' Rt.	108+46.07, 40.00 Rt.	22.45'	1044.22	1044.45		
139	107+66.64, 17.45' Rt.	107+66.60, 40.00 Rt.	22.55'	1044.58	1044.81		
140	107+02.69, 17.35' Rt.	107+02.76, 40.00 Rt.	22.36'	1044.70	1044.92		
141	106+30.41, 17.08' Rt.	106+30.32, 40.00 Rt.	22.88'	1045.02	1045.25		
158	107+91.90, 17.15' Rt.	107+91.99, 40.00 Lt.	57.15'	1044.46	1045.64		
159	108+66.11, 16.93' Rt.	108+66.19, 40.00 Lt.	56.93'	1044.13	1047.67	3.0'	4.24'
160	109+71.11, 17.08' Rt.	109+71.19, 40.00 Lt.	57.08'	1043.66	1047.70	3.5'	4.95'

**STORM SEWER**

REFER TO GENERAL NOTES SHEET 04 FOR CONSTRUCTION NOTES.  
 ALL RCP PIPE SHALL BE CLASS 4 PER ODOT 706.02  
 ALL HDPE PIPE SHALL BE SMOOTH LINED PER ODOT 707.33  
 ALL PVC PIPE SHALL BE SDR 35 PER ODOT 707.45

**NOTE:**  
 ALL OIL AND GAS WELL REMOVALS, PLUGGING/CAPPING, AND ABANDONMENTS SHALL BE IN ACCORDANCE WITH ALL ASSOCIATED REGULATIONS FOR SUCH REMOVALS, INCLUDING BUT NOT LIMITED TO, ODNR, LOCAL, STATE, AND FEDERAL.  
 EXISTING HIGH PRESSURE GAS MAIN SHALL BE LOCATED AND PROTECTED PRIOR TO AND THROUGHOUT CONSTRUCTION.

**Underground Utilities**

2 Working Days Before You Dig  
 Call 800-362-2764 (Toll Free)  
 Ohio Utilities Protection Service  
 Non-members Must Be Called Directly  
 Call 800-925-0988 (Toll Free)  
 Oil & Gas Producers Utility Protection Service

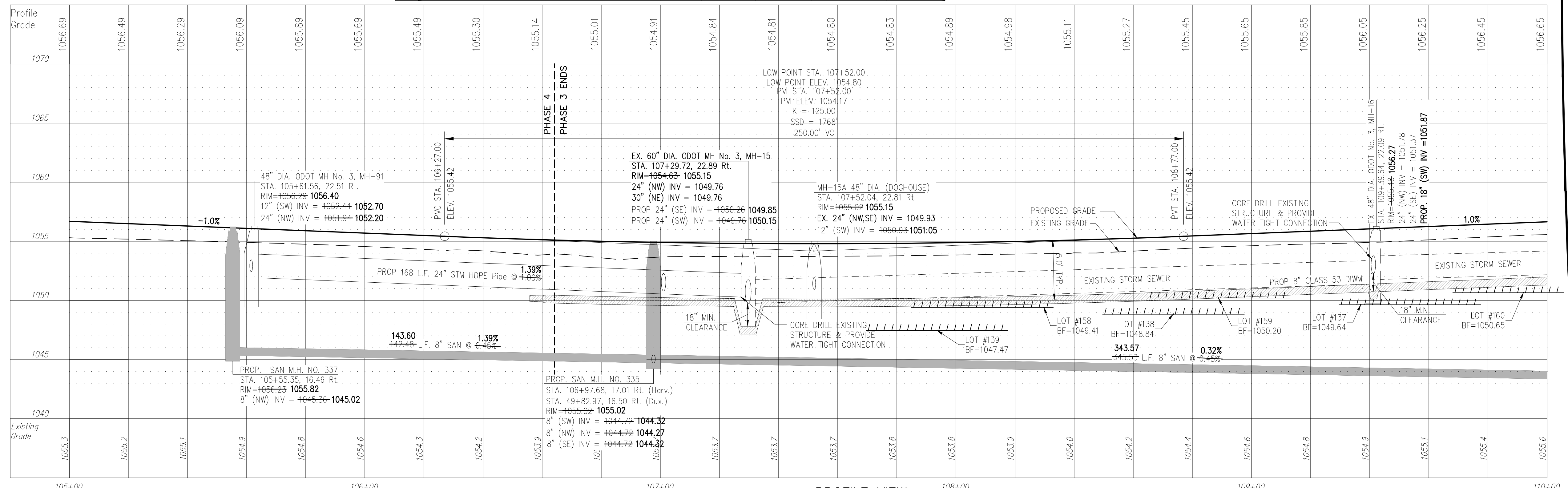
**HARVESTER DRIVE WATER MAIN FITTING SCHEDULE**

ITEM	STATION	OFFSET
*6" RELOCATED TEMP HYD.	106+55.80	21.67' Lt.
8" X 6" REDUCER	106+60.47	21.76' Lt.
WATER VALVE	106+85.39	22.26' Lt.
8" X 8" TEE	107+34.47	21.39' Lt.
WATER VALVE	107+43.00	21.24' Lt.
*6" HYD. ASSEMBLY, TYPE B	107+63.64	17.09' Lt.
45" VERTICAL BEND	107+24.78	
45" VERTICAL BEND	107+26.98	
45" VERTICAL BEND	107+32.39	
45" VERTICAL BEND	107+34.86	
45" VERTICAL BEND	109+39.51	
45" VERTICAL BEND	109+40.32	
45" VERTICAL BEND	109+42.37	
45" VERTICAL BEND	109+42.99	

\* STATION AND OFFSET TAKEN TO CENTER OF HYDRANT

**HARVESTER DRIVE WATER CONNECTION SCHEDULE**

UNIT	CONNECTION AT MAIN	LATERAL TERMINATION	LENGTH
137	109+25.43, 20.18' Lt.	109+24.36, 40.00 Rt.	60.19'
138	108+56.16, 21.40' Lt.	108+56.07, 40.00 Rt.	61.40'
139	107+76.70, 20.55' Lt.	107+76.70, 40.00 Rt.	60.54'
140	107+17.55, 21.31' Lt.	107+17.76, 40.00 Rt.	61.30'
158	107+81.70, 21.39' Lt.	107+81.70, 40.00 Lt.	18.61'
159	108+75.87, 21.77' Lt.	108+76.19, 40.00 Lt.	18.23'
160	109+81.36, 19.87' Lt.	109+81.71, 40.00 Lt.	20.14'



**PROFILE VIEW**  
 HORIZONTAL SCALE: 1"=20'  
 VERTICAL SCALE: 1"=5'

REV.	DATE	DESCRIPTION

**THE PRESERVE AT MILLER'S FARM**  
**PHASE 3 AS-BUILTS**  
 SE CORNER OF SR 18 AND MEDINA LINE RD  
 COPLEY, OHIO 44321

**PLAN AND PROFILE**  
**HARVESTER DRIVE**

**ISSUED FOR:**

PERMIT	04-06-2016
BID	
CONSTRUCTION	
AS-BUILT	11-04-2016

PROJECT MANAGER	DESIGNER
MAL	ALF

JOB NO.  
**2013258.03**