

UNIT	CONNECTION AT MAIN	LATERAL TERMINATION	LENGTH
82	60+95.30, 20.87' Rt.	60+95.30, 40.00 Rt.	19.13'
83	59+66.80, 15.42' Rt.	59+67.44, 40.01' Rt.	24.60'
84	58+92.85, 16.37' Rt.	58+94.03, 39.52' Rt.	23.17'
85	58+04.50, 16.00' Rt.	58+04.50, 40.00' Rt.	24.00'
86	57+28.42, 18.47' Rt.	57+28.42, 40.00' Rt.	21.53'
97	56+52.47, 19.47' Rt.	56+51.78, 40.00 Lt.	59.47'
98	57+33.42, 18.18' Rt.	57+33.42, 40.00 Lt.	58.18'
99	58+09.50, 16.04' Rt.	58+10.00, 40.00 Lt.	56.04'
100	58+87.50, 16.57' Rt.	58+86.45, 40.00 Lt.	56.58'
101	59+53.47, 15.47' Rt.	59+51.88, 40.00 Lt.	55.50'
102	60+23.59, 19.31' Rt.	60+25.54, 40.00 Lt.	59.43'

UNIT	CONNECTION AT MAIN	LATERAL TERMINATION	LENGTH	INVERT
82	60+90.30, 17.50' Lt.	60+90.30, 40.00' Rt.	57.50'	1060.67
83	59+72.06, 20.39' Lt.	59+73.39, 40.00' Rt.	60.42'	1060.23
84	58+78.79, 21.56' Lt.	58+82.15, 39.76' Rt.	61.41'	1060.64
85	57+88.25, 21.17' Lt.	57+88.25, 40.00 Rt.	61.17'	1061.62
86	57+23.34, 21.09' Lt.	57+23.42, 40.00 Rt.	61.09'	1062.26
97	56+61.14, 22.19' Lt.	56+60.41, 39.73 Lt.	17.57'	1062.90
98	57+38.44, 21.10' Lt.	57+38.42, 40.00 Lt.	18.89'	1062.11
99	58+18.20, 21.21' Lt.	58+18.18, 40.00 Lt.	18.78'	1061.31
100	58+92.28, 22.64' Lt.	58+90.78, 40.00 Lt.	17.45'	1060.49
101	59+45.43, 22.98' Lt.	59+47.53, 40.00 Lt.	17.18'	1060.18

UNIT	CONNECTION AT MAIN	LATERAL TERMINATION	LENGTH	INV. @ MAIN	INV. @ STUB	VERT. RISER HT	45' LENGTH
83	59+76.92, 13.63' Lt.	59+80.55, 40.00 Rt.	53.75'	1053.57	1054.11		
84	58+74.33, 15.72' Lt.	58+76.21, 40.00 Rt.	55.74'	1054.07	1054.63		
85	57+93.25, 14.85' Lt.	57+93.25, 40.00 Rt.	54.85'	1054.44	1054.98		
86	57+18.35, 14.75' Lt.	57+18.42, 40.00 Rt.	54.75'	1054.77	1055.32		
97	56+66.15, 15.73' Lt.	56+64.72, 40.00 Lt.	24.32'	1055.01	1055.26		
98	57+43.45, 14.78' Lt.	57+43.42, 40.00 Lt.	25.22'	1054.66	1054.92		
99	58+23.21, 15.55' Lt.	58+23.18, 40.00 Lt.	24.45'	1054.30	1054.55		
100	58+97.46, 17.56' Lt.	58+95.11, 40.00 Lt.	22.60'	1053.96	1054.19		
101	59+40.14, 14.62' Lt.	59+42.12, 40.00 Lt.	25.47'	1053.84	1057.06	3'	4.24'

NOTE: CONTRACTOR SHALL VERIFY LATERAL CONNECTION TO SUBLOT 102 IN GOOD CONDITION AND CLEAR OF DEBRIS

Structure Name	Structure Details, SEE SHEET 25
CB-CH	ODOT CB No. 3A STA. 60+06.61, 13.00 Rt. RIM = 1063.79 12" RCP INV (W)=1060.16
CB-CI	ODOT CB No. 3A STA. 60+06.61, -13.00 Lt. RIM = 1063.79 12" RCP INV (E)=1059.90 12" PVC INV (W)=1059.90
CB-CJ	ODOT CB No. 3 STA. 59+25, 13.00 Rt. RIM = 1063.13 12" RCP INV (SW)=1059.70
CB-CK	ODOT CB No. 3 STA. 59+25, -13.00 Lt. RIM = 1063.13 12" RCP INV (NE)=1059.57 12" RCP INV (SW)=1059.57
CB-CL	ODOT CB No. 3A STA. 58+00, 13.00 Rt. RIM = 1064.70 12" RCP INV (SW)=1061.34
CB-CM	ODOT CB No. 3A STA. 58+00, -13.00 Lt. RIM = 1064.70 12" RCP INV (NE)=1061.08 12" RCP INV (SW)=1061.08

Underground Utilities

2 Working Days Before You Dig
 Call 800-362-2764 (Toll Free)
 Ohio Utilities Protection Service

Non-members Must Be Called Directly
 Call 800-925-0988 (Toll Free)
 Oil & Gas Producers Utility Protection Service

NOTE:
 ALL OIL AND GAS WELL REMOVALS, PLUGGING/CAPPING, AND ABANDONMENTS SHALL BE IN ACCORDANCE WITH ALL ASSOCIATED REGULATIONS FOR SUCH REMOVALS, INCLUDING BUT NOT LIMITED TO, ODNR, LOCAL, STATE, AND FEDERAL.

EXISTING HIGH PRESSURE GAS MAIN SHALL BE LOCATED AND PROTECTED PRIOR TO AND THROUGHOUT CONSTRUCTION.

STORM SEWER
 REFER TO GENERAL NOTES SHEET 04 FOR CONSTRUCTION NOTES.
 ALL RCP PIPE SHALL BE CLASS 4 PER ODOT 706.02
 ALL HDPE PIPE SHALL BE SMOOTH LINED PER ODOT 707.33
 ALL PVC PIPE SHALL BE SDR 35 PER ODOT 707.45

PLAN VIEW
 SCALE: 1"=20'

ITEM	STATION	OFFSET
*6" HYD. ASSEMBLY, TYPE B	58+15.66	14.45' RL
11.25" BEND	59+13.66	15.12' RL
11.25" BEND	59+71.26	15.53' RL
CONNECTION TO EXISTING LINE	60+68.30	20.50' RL

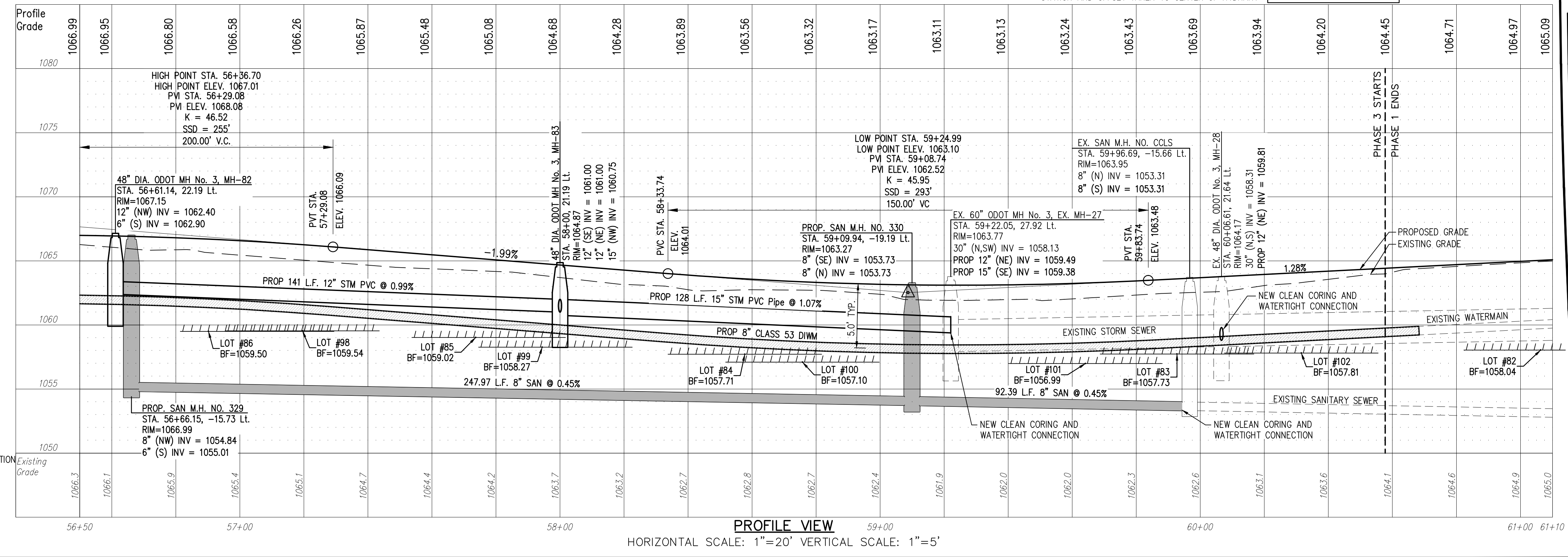
*STATION AND OFFSET TAKEN TO CENTER OF HYDRANT

#	STATION	OFFSET
3	56+84.55	0.00
2	58+67.61	0.00
1	60+59.68	0.00

STATION AND OFFSET TAKEN FROM CONSTRUCTION C/L

LEGEND
 SEE GENERAL LEGEND, SHEET 03

- PROPOSED ROLLED CURB AND GUTTER
- PROPOSED WALK
- PROPOSED WALK BY OTHERS
- PROPOSED WATER LATERAL
- PROPOSED SANITARY LATERAL
- PROPOSED STORM LATERAL
- PROPOSED WATER MAIN
- PROPOSED SANITARY MAIN
- PROPOSED STORM MAIN
- PROPOSED C/L OF CONSTRUCTION
- PROPOSED C/L OF RIGHT OF WAY
- PROPOSED MONUMENT BOX
- PROPOSED BOTTOM OF FOOTER ELEVATION
- PROPOSED ASPHALT PAVEMENT
- PROPOSED DRAINAGE ACCESS EASEMENT
- PHASE 1 DRAINAGE ACCESS EASEMENT



PROFILE VIEW
 HORIZONTAL SCALE: 1"=20' VERTICAL SCALE: 1"=5'

REV.	DATE	DESCRIPTION
06/10/16		REVISED PER AGENCY COMMENTS
7/11/16		REVISED PER COUNTY COMMENTS

THE PRESERVE AT MILLER'S FARM
 PHASE 3
 SE CORNER OF SR 18 AND MEDINA LINE RD
 COPLEY, OHIO 44321

PLAN AND PROFILE
 DUXBURY DRIVE

ISSUED FOR:	
PERMIT	04-06-2016
BID	
CONSTRUCTION	
AS-BUILT	
PROJECT MANAGER	DESIGNER
MAL	ALF

JOB NO.
2013258.03

19/29