

LEGEND

SEE GENERAL LEGEND, SHEET 03

PROPOSED ROLLED CURB AND GUTTER

PROPOSED WALK

PROPOSED WALK BY OTHERS

PROPOSED WATER LATERAL

PROPOSED SANITARY LATERAL

PROPOSED STORM LATERAL

PROPOSED WATER MAIN

PROPOSED SANITARY MAIN

PROPOSED STORM MAIN

PROPOSED C/L OF CONSTRUCTION

PROPOSED C/L OF RIGHT OF WAY

PROPOSED MONUMENT BOX

PROPOSED BOTTOM OF FOOTER ELEVATION

PROPOSED ASPHALT PAVEMENT

PROPOSED DRAINAGE ACCESS EASEMENT

NOTE:

ANY SERVICE LATERAL CROSSING WATER MAIN SHALL MAINTAIN 18" MINIMUM CLEARANCE.

ALL WATER MAIN PIPE JOINTS WITHIN AREAS OF FILL MUST BE RESTRAINED.

DUXBERRY DRIVE WATER MAIN FITTING SCHEDULE

ITEM	STATION	OFFSET
45° BEND	53+82.08	14.79' Rt.
45° BEND	54+44.52	16.91' Rt.
*6" HYD. ASSEMBLY, TYPE B	55+06.31	14.70' Rt.
11.25° BEND	56+37.18	18.47' Rt.

*STATION AND OFFSET TAKE TO CENTER OF HYDRANT

DUXBERRY DRIVE WATER CONNECTION SCHEDULE

UNIT	CONNECTION AT MAIN	LATERAL TERMINATION	LENGTH
87	53+23.02, 17.23' Rt.	53+23.02, 40.00' Rt.	22.77'
92	53+67.94, 15.32' Rt.	53+77.50, 56.94' Lt.	72.89'
93	53+90.39, 18.86' Rt.	54+10.59, 90.97' Lt.	112.97'
94	54+35.97, 19.79' Rt.	54+34.62, 83.54' Lt.	111.52'
95	54+84.90, 15.60' Rt.	54+87.27, 40.00' Lt.	55.65'
96	55+72.18, 21.50' Rt.	55+74.38, 40.00' Lt.	61.54'

DUXBERRY DRIVE STORM CONNECTION SCHEDULE

UNIT	CONNECTION AT MAIN	LATERAL TERMINATION	LENGTH	INVERT
87	53+21.74, 33.77' Lt.	53+17.20, 40.00' Rt.	73.91'	1056.14
92	53+86.90, 32.08' Lt.	53+86.96, 66.46' Lt.	34.37'	1058.53
93	54+03.20, 36.45' Lt.	54+08.97, 90.31' Lt.	55.66'	1057.63
94	54+22.04, 42.93' Lt.	54+33.02, 85.07' Lt.	50.10'	1058.24
95	54+91.47, 21.13' Lt.	54+92.27, 40.00' Lt.	18.89'	1059.58
96	55+60.05, 21.16' Lt.	55+60.05, 40.00' Lt.	18.84'	1060.95

DUXBERRY DRIVE SANITARY CONNECTION SCHEDULE

UNIT	CONNECTION AT MAIN	LATERAL TERMINATION	LENGTH	INV. @ MAIN	INV. @ STUB
87	53+09.31, 21.62' Lt.	53+12.88, 40.00' Rt.	61.73'	1049.45	1050.07
91	53+03.86, 21.23' Lt.	53+01.86, 40.00' Lt.	18.86'	1049.38	1049.57
92	53+90.72, 23.51' Lt.	53+89.22, 69.94' Lt.	46.54'	1050.70	1051.17
93	54+13.27, 41.88' Lt.	54+13.76, 92.02' Lt.	50.15'	1051.35	1051.85
94	54+18.30, 42.27' Lt.	54+31.41, 86.48' Lt.	54.79'	1051.56	1052.11
95	54+96.19, 14.55' Lt.	54+97.28, 40.00' Lt.	25.48'	1053.12	1053.38
96	55+64.23, 15.67' Lt.	55+64.23, 40.00' Lt.	24.33'	1054.19	1054.44

PROPOSED STRUCTURE TABLE

Structure Name	Structure Details, SEE SHEET 25
CB-CN	ODOT CB No. 3A STA. 54+67.71, 13.00 Rt. RIM = 1064.36 12" PVC INV (S)=1060.36
CB-CO	Precast Round Structure STA. 54+67.71, -13.00 Lt. RIM = 1064.36 12" PVC INV (N)=1060.10 12" PVC INV (SE)=1060.10
CB-CP	ODOT CB No. 3 STA. 53+96.11, -45.93 Lt. RIM = 1062.72 12" PVC INV (N)=1058.25

DUXBERRY DRIVE MONUMENT BOX SCHEDULE

#	STATION	OFFSET
4	55+18.31	0.00
5	54+17.30	17.40 Lt.
6	53+26.31	0.00

STATION AND OFFSET TAKEN FROM CONSTRUCTION C/L

BENCHMARK #2
RAILROAD SPIKE IN POLE
ELEVATION = 1101.95'

SEE SHEET 02 FOR LOCATION OF ALL BENCHMARKS

STORM SEWER

REFER TO GENERAL NOTES SHEET 04 FOR CONSTRUCTION NOTES.

ALL RCP PIPE SHALL BE CLASS 4 PER ODOT 706.02

ALL HDPE PIPE SHALL BE SMOOTH LINED PER ODOT 707.33

ALL PVC PIPE SHALL BE SDR 35 PER ODOT 707.45

NOTE:

ALL OIL AND GAS WELL REMOVALS, PLUGGING/CAPPING, AND ABANDONMENTS SHALL BE IN ACCORDANCE WITH ALL ASSOCIATED REGULATIONS FOR SUCH REMOVALS, INCLUDING BUT NOT LIMITED TO, ODNR, LOCAL, STATE, AND FEDERAL.

EXISTING HIGH PRESSURE GAS MAIN SHALL BE LOCATED AND PROTECTED PRIOR TO AND THROUGHOUT CONSTRUCTION.

Underground Utilities

2 Working Days Before You Dig

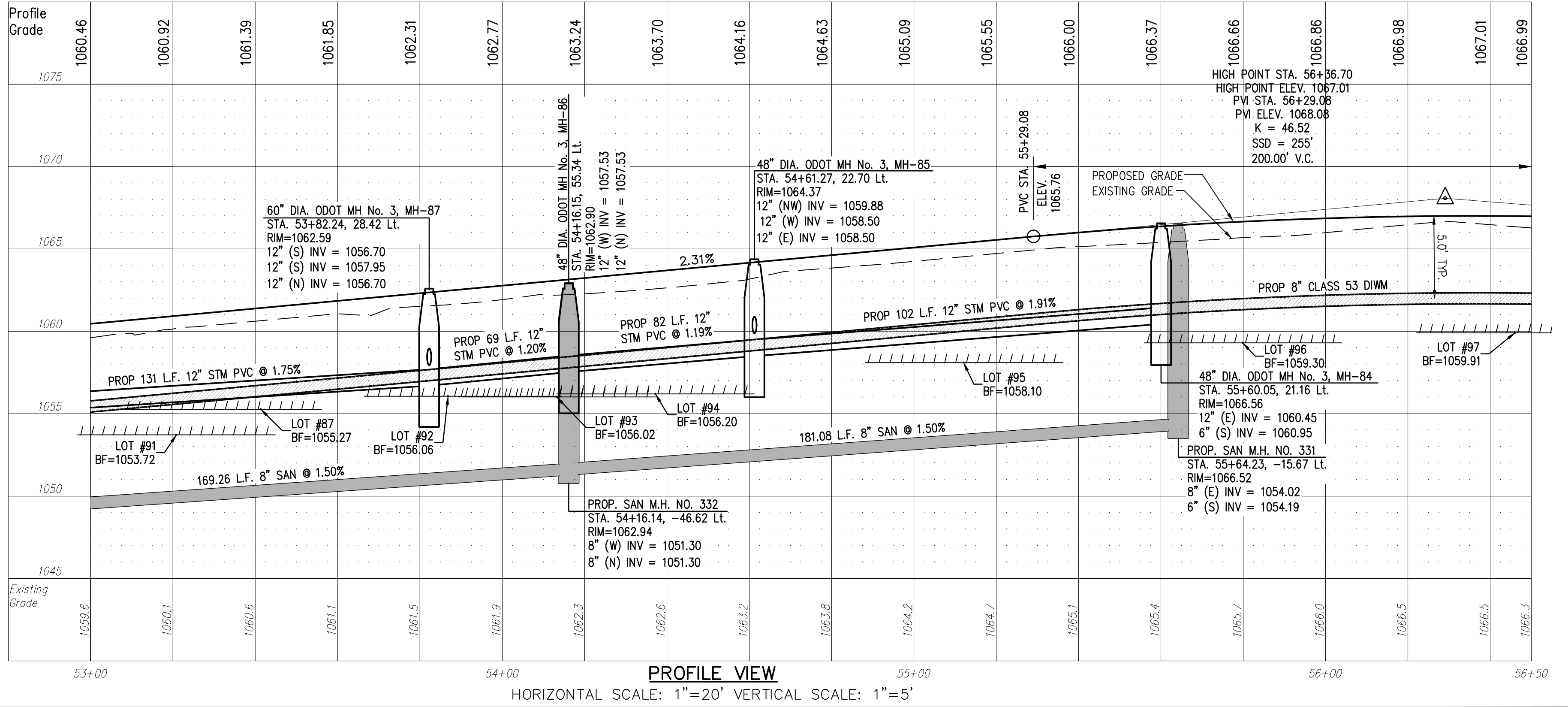
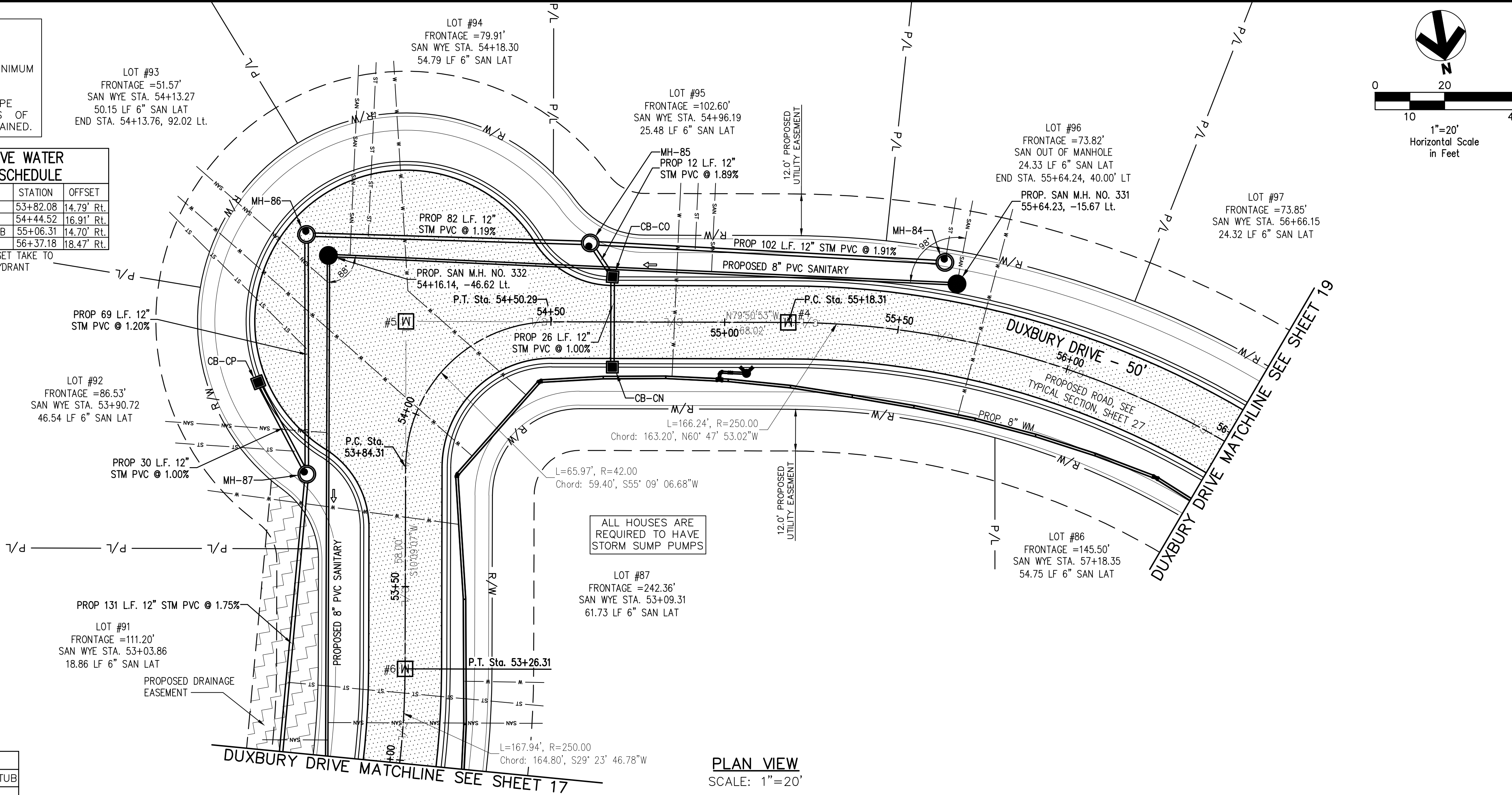
Call 800-362-2764 (Toll Free)

Ohio Utilities Protection Service

Non-members Must Be Called Directly

Call 800-925-0988 (Toll Free)

Oil & Gas Producers Utility Protection Service



REV.	DATE	DESCRIPTION
06/10/16		REVISED PER AGENCY COMMENTS
7/11/16		REVISED PER COUNTY COMMENTS

THE PRESERVE AT MILLER'S FARM
 PHASE 3
 SE CORNER OF SR 18 AND MEDINA LINE RD
 COPLEY, OHIO 44321

**PLAN AND PROFILE
 DUXBERRY DRIVE**

ISSUED FOR:

PERMIT	04-06-2016
BID	
CONSTRUCTION	
AS-BUILT	

PROJECT MANAGER	DESIGNER
MAL	ALF

JOB NO.
2013258.03

18/29