

**LEGEND**  
 SEE GENERAL LEGEND, SHEET 03

- PROPOSED ROLLED CURB AND GUTTER
- PROPOSED WALK
- PROPOSED WALK BY OTHERS
- PROPOSED WATER LATERAL
- PROPOSED SANITARY LATERAL
- PROPOSED STORM LATERAL
- PROPOSED WATER MAIN
- PROPOSED SANITARY MAIN
- PROPOSED STORM MAIN
- PROPOSED C/L OF CONSTRUCTION
- PROPOSED C/L OF RIGHT OF WAY
- PROPOSED MONUMENT BOX
- PROPOSED BOTTOM OF FOOTER ELEVATION
- PROPOSED ASPHALT PAVEMENT
- PROPOSED DRAINAGE ACCESS EASEMENT

**NOTE:**  
 ANY SERVICE LATERAL CROSSING WATER MAIN SHALL MAINTAIN 18" MINIMUM CLEARANCE.  
 ALL WATER MAIN PIPE JOINTS WITHIN AREAS OF FILL MUST BE RESTRAINED.

**DUXBERRY DRIVE WATER MAIN FITTING SCHEDULE**

ITEM	STATION	OFFSET
45° BEND	53+82.08	14.79' Rt.
45° BEND	54+44.52	16.91' Rt.
*6" HYD. ASSEMBLY, TYPE B	55+06.31	14.70' Rt.
11.25' BEND	56+37.18	18.47' Rt.

\*STATION AND OFFSET TAKE TO CENTER OF HYDRANT

**DUXBERRY DRIVE WATER CONNECTION SCHEDULE**

UNIT	CONNECTION AT MAIN	LATERAL TERMINATION	LENGTH
87	53+23.02, 17.23' Rt.	53+23.02, 40.00' Lt.	22.77'
92	53+67.94, 15.32' Rt.	53+77.50, 56.91' Lt.	72.89'
93	53+90.39, 18.86' Rt.	54+10.59, 90.97' Lt.	112.97'
94	54+35.97, 19.79' Rt.	54+34.62, 83.54' Lt.	111.52'
95	54+84.90, 18.60' Rt.	54+87.27, 40.68' Lt.	55.65'
96	55+72.18, 21.50' Rt.	55+74.38, 40.00' Lt.	61.84'

**DUXBERRY DRIVE STORM CONNECTION SCHEDULE**

UNIT	CONNECTION AT MAIN	LATERAL TERMINATION	LENGTH	INVERT
87	53+21.74, 33.77' Lt.	53+17.20, 40.00' Rt.	73.91'	1056.14
92	53+86.90, 32.06' Lt.	53+86.96, 66.46' Lt.	34.57'	1058.53
93	54+03.20, 36.45' Lt.	54+08.97, 90.51' Lt.	55.66'	1057.63
94	54+22.04, 42.93' Lt.	54+33.02, 86.07' Lt.	50.10'	1058.24
95	54+81.47, 21.42' Lt.	54+92.27, 40.00' Lt.	18.89'	1059.58
96	55+66.05, 21.16' Lt.	55+60.05, 40.00' Lt.	18.84'	1060.95

**DUXBERRY DRIVE SANITARY CONNECTION SCHEDULE**

UNIT	CONNECTION AT MAIN	LATERAL TERMINATION	LENGTH	INV. @ MAIN	INV. @ STUB
87	53+09.34, 21.62' Lt.	53+12.88, 40.00' Rt.	61.73'	1049.45	1050.07
91	53+03.86, 21.23' Lt.	53+01.86, 40.00' Lt.	18.86'	1049.38	1049.57
92	53+90.72, 23.51' Lt.	53+89.22, 69.94' Lt.	46.54'	1050.70	1051.17
93	54+13.27, 41.88' Lt.	54+13.76, 90.97' Lt.	50.15'	1051.35	1051.85
94	54+18.30, 42.27' Lt.	54+31.41, 86.48' Lt.	54.79'	1051.56	1052.11
95	54+96.19, 14.55' Lt.	54+97.28, 40.00' Lt.	25.48'	1053.12	1053.38
96	55+64.23, 15.67' Lt.	55+64.23, 40.00' Lt.	24.33'	1054.19	1054.44

**PROPOSED STRUCTURE TABLE**

Structure Name	Structure Details, SEE SHEET 25
CB-CN	ODOT CB No. 3A STA. 54+67.71, 13.00 Rt. RIM = 1064.36 1064.00 12" PVC INV (S) = 1063.36 4" CPP (W) INV = 1060.50
CB-CO	Precast Round Structure STA. 54+67.71, -13.00 Lt. RIM = 1064.36 1064.00 12" PVC INV (N) = 1063.36 1060.25 12" PVC INV (SE) = 1060.10 1060.25 4" CPP (W) INV = 1061.30
CB-CP	ODOT CB No. 3 STA. 53+96.11, -45.93 Lt. RIM = 1062.72 1062.20 12" PVC INV (N) = 1061.25 1058.15 4" CPP (S) INV = 1059.75

**DUXBERRY DRIVE MONUMENT BOX SCHEDULE**

#	STATION	OFFSET
4	55+18.31	0.00
5	54+17.30	17.40 Lt.
6	53+26.31	0.00

STATION AND OFFSET TAKEN FROM CONSTRUCTION C/L

**BENCHMARK #2**  
 RAILROAD SPIKE IN POLE  
 ELEVATION = 1101.95'  
 SEE SHEET 02 FOR LOCATION OF ALL BENCHMARKS

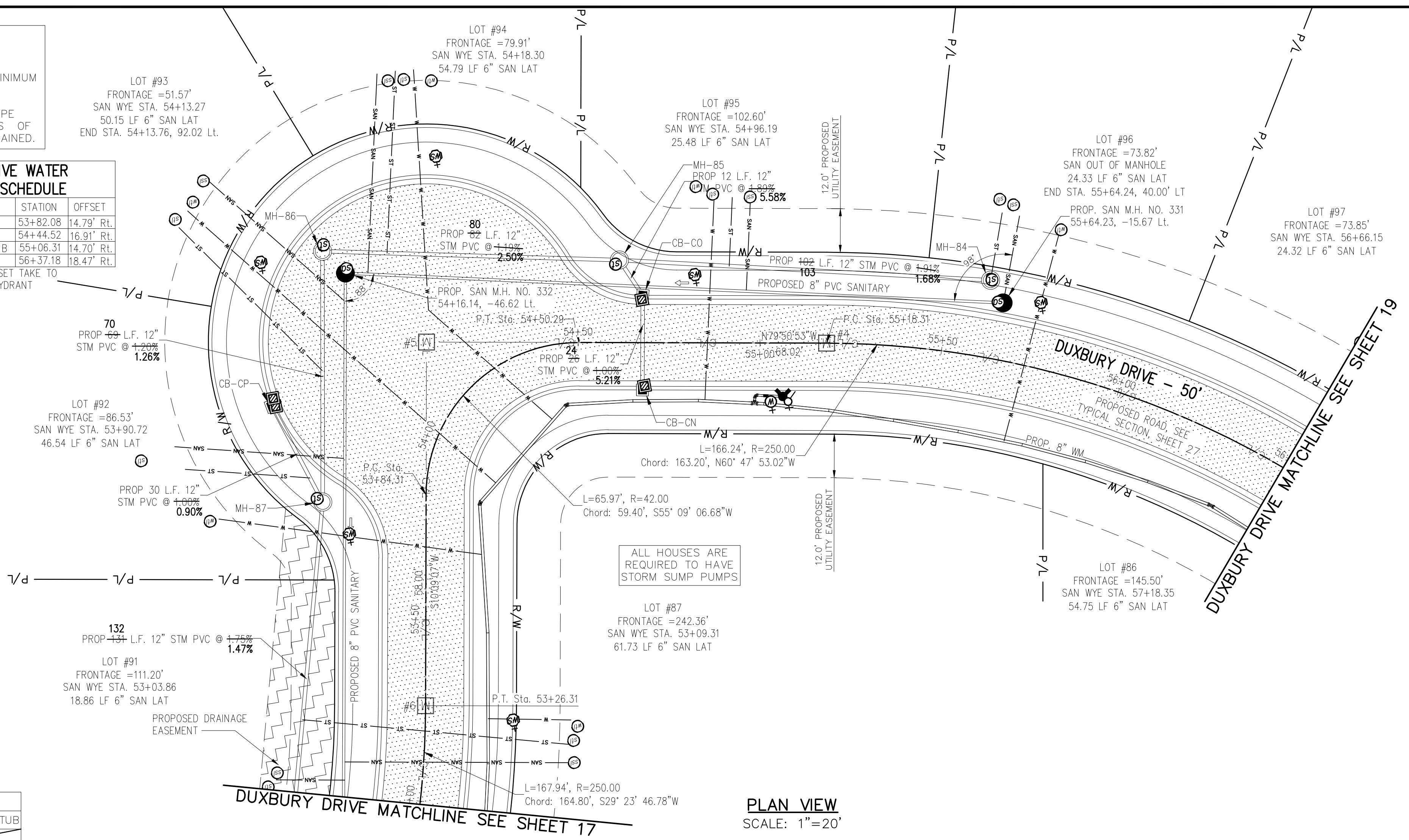
**STORM SEWER**  
 REFER TO GENERAL NOTES SHEET 04 FOR CONSTRUCTION NOTES.  
 ALL RCP PIPE SHALL BE CLASS 4 PER ODOT 706.02  
 ALL HDPE PIPE SHALL BE SMOOTH LINED PER ODOT 707.33  
 ALL PVC PIPE SHALL BE SDR 35 PER ODOT 707.45

**NOTE:**  
 ALL OIL AND GAS WELL REMOVALS, PLUGGING/CAPPING, AND ABANDONMENTS SHALL BE IN ACCORDANCE WITH ALL ASSOCIATED REGULATIONS FOR SUCH REMOVALS, INCLUDING BUT NOT LIMITED TO, ODNR, LOCAL, STATE, AND FEDERAL.  
 EXISTING HIGH PRESSURE GAS MAIN SHALL BE LOCATED AND PROTECTED PRIOR TO AND THROUGHOUT CONSTRUCTION.

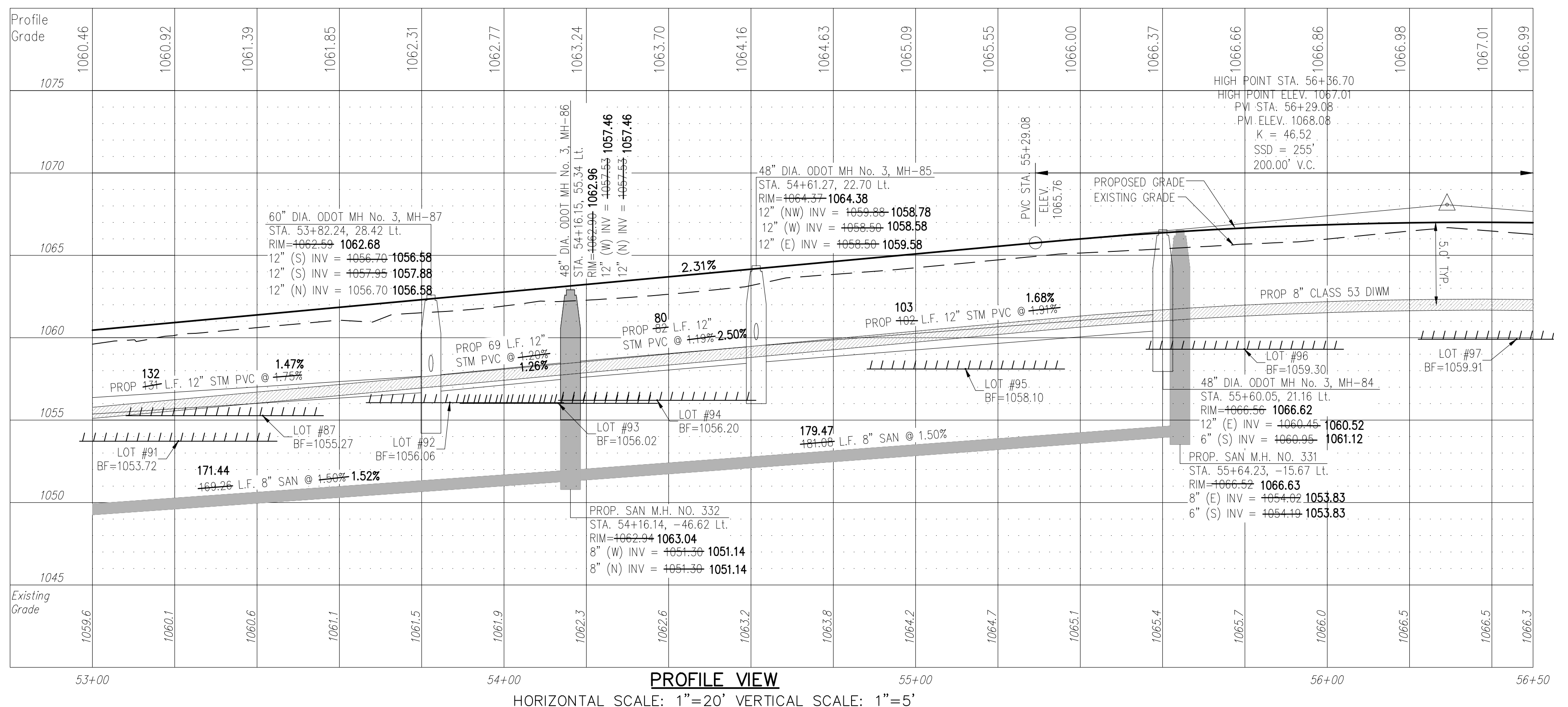
**Underground Utilities**

2 Working Days Before You Dig  
 Call 800-362-2764 (Toll Free)  
 Ohio Utilities Protection Service

Non-members Must Be Called Directly  
 Call 800-925-0988 (Toll Free)  
 Oil & Gas Producers Utility Protection Service



**PLAN VIEW**  
 SCALE: 1"=20'



**PROFILE VIEW**  
 HORIZONTAL SCALE: 1"=20' VERTICAL SCALE: 1"=5'

REV.	DATE	DESCRIPTION

**THE PRESERVE AT MILLER'S FARM**  
 PHASE 3 AS-BUILTS  
 SE CORNER OF SR 18 AND MEDINA LINE RD  
 COPLEY, OHIO 44321

**PLAN AND PROFILE**  
**DUXBERRY DRIVE**

**ISSUED FOR:**

PERMIT	04-06-2016
BID	
CONSTRUCTION	
AS-BUILT	11-04-2016

**PROJECT MANAGER** MAL      **DESIGNER** ALF

**JOB NO.**  
**2013258.03**

**18/29**