

LEGEND

SEE GENERAL LEGEND, SHEET 03

- PROPOSED ROLLED CURB AND GUTTER
- PROPOSED WALK
- PROPOSED WALK BY OTHERS
- PROPOSED WATER LATERAL
- PROPOSED SANITARY LATERAL
- PROPOSED STORM LATERAL
- PROPOSED WATER MAIN
- PROPOSED SANITARY MAIN
- PROPOSED STORM MAIN
- PROPOSED C/L OF CONSTRUCTION
- PROPOSED C/L OF RIGHT OF WAY
- PROPOSED MONUMENT BOX
- PROPOSED BOTTOM OF FOOTER ELEVATION
- PROPOSED ASPHALT PAVEMENT
- PROPOSED DRAINAGE ACCESS EASEMENT
- PHASE 1 DRAINAGE ACCESS EASEMENT

STORM SEWER

REFER TO GENERAL NOTES SHEET 04 FOR CONSTRUCTION NOTES.
 ALL RCP PIPE SHALL BE CLASS 4 PER ODOT 706.02
 ALL HDPE PIPE SHALL BE SMOOTH LINED PER ODOT 707.33
 ALL PVC PIPE SHALL BE SDR 35 PER ODOT 707.45

DUXBURY DRIVE MONUMENT BOX SCHEDULE

| # | STATION | OFFSET |
|---|-----------|----------------|
| 7 | 51+58.37 | 0.00 DUXBURY |
| 8 | 50+00.00 | 0.00 DUXBURY |
| | 107+14.18 | 0.00 HARVESTER |

STATION AND OFFSET TAKEN FROM CONSTRUCTION C/L

DUXBERRY DRIVE WATER MAIN FITTING SCHEDULE

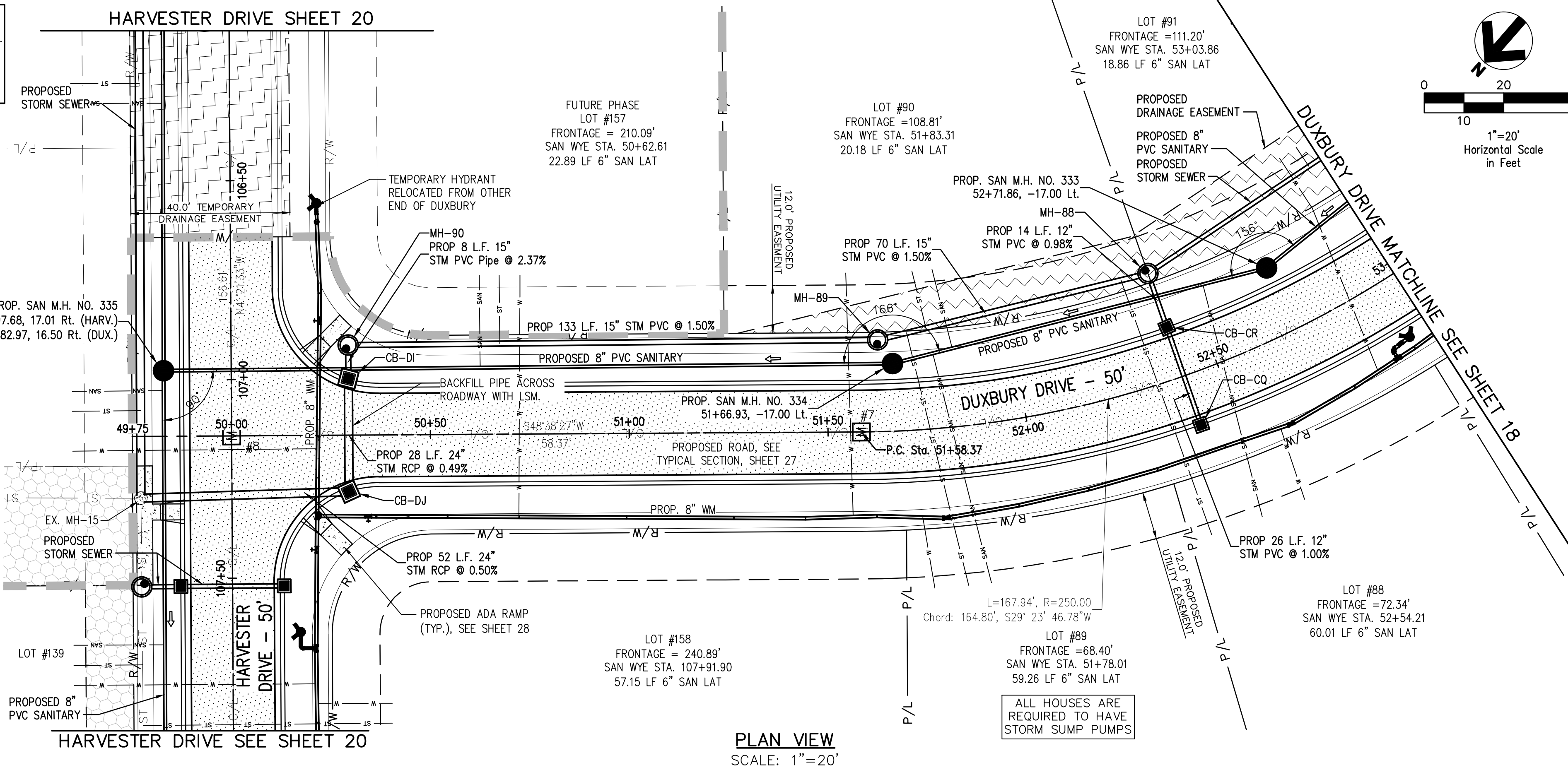
| ITEM | STATION | OFFSET |
|---------------------------|----------|------------|
| WATER VALVE | 50+34.22 | 20.42' Rt. |
| 11.25" HORIZONTAL BEND | 51+77.87 | 22.60' Rt. |
| 11.25" HORIZONTAL BEND | 52+60.85 | 21.14' Rt. |
| *6" HYD. ASSEMBLY, TYPE B | 52+94.98 | 15.64' Rt. |
| 45" VERTICAL BEND | 50+24.70 | |
| 45" VERTICAL BEND | 50+25.88 | |

*STATION AND OFFSET TAKEN TO CENTER OF HYDRANT

PROPOSED STRUCTURE TABLE

| Structure Name | Structure Details, SEE SHEET 25 |
|----------------|--|
| CB-CQ | ODOT CB No. 3A STA. 52+41.08, 13.00 Rt. RIM = 1059.12 12" PVC INV (SE)=1054.81 |
| CB-CR | ODOT CB No. 3A STA. 52+41.08, -13.00 Lt. RIM = 1059.12 12" PVC INV (NW)=1054.55 12" PVC INV (SE)=1054.55 |
| CB-DI | ODOT CB No. 3 STA. 50+29.45, -14.22 Lt. RIM = 1054.33 24" RCP INV (NW)=1050.16 15" PVC Pipe INV (SE)=1050.91 |

NOTE:
 ANY SERVICE LATERAL CROSSING WATER MAIN SHALL MAINTAIN 18" MINIMUM CLEARANCE.
 ALL WATER MAIN PIPE JOINTS WITHIN AREAS OF FILL MUST BE RESTRAINED.
 BENCHMARK #2 RAILROAD SPIKE IN POLE ELEVATION = 1101.95'
 SEE SHEET 02 FOR LOCATION OF ALL BENCHMARKS



DUXBURY DRIVE WATER CONNECTION SCHEDULE

| UNIT | CONNECTION AT MAIN | LATERAL TERMINATION | LENGTH |
|------|----------------------|----------------------|--------|
| 88 | 52+58.24, 21.31' Rt. | 52+56.94, 39.88' Rt. | 18.63' |
| 89 | 51+72.48, 22.03' Rt. | 51+74.11, 40.00' Rt. | 18.06' |
| 90 | 51+56.17, 20.98' Rt. | 51+54.71, 40.00' Lt. | 60.98' |
| 91 | 52+84.54, 18.80' Rt. | 52+89.93, 39.78' Lt. | 59.01' |
| 157 | 50+72.12, 20.46' Rt. | 50+72.78, 40.00' Lt. | 60.46' |

DUXBURY DRIVE SANITARY CONNECTION SCHEDULE

| UNIT | CONNECTION AT MAIN | LATERAL TERMINATION | LENGTH | INV. @ MAIN | INV. @ STUB |
|------|----------------------|----------------------|--------|-------------|-------------|
| 88 | 52+54.21, 19.55' Lt. | 52+47.03, 40.00' Rt. | 60.01' | 1048.68 | 1049.28 |
| 89 | 51+78.01, 18.62' Lt. | 51+86.43, 40.00' Rt. | 59.26' | 1047.70 | 1048.29 |
| 90 | 51+83.31, 20.05' Lt. | 51+79.85, 40.00' Lt. | 20.18' | 1047.63 | 1047.83 |
| 157 | 50+62.61, 17.11' Lt. | 50+62.53, 40.00' Lt. | 22.89' | 1046.00 | 1046.23 |

DUXBURY DRIVE STORM CONNECTION SCHEDULE

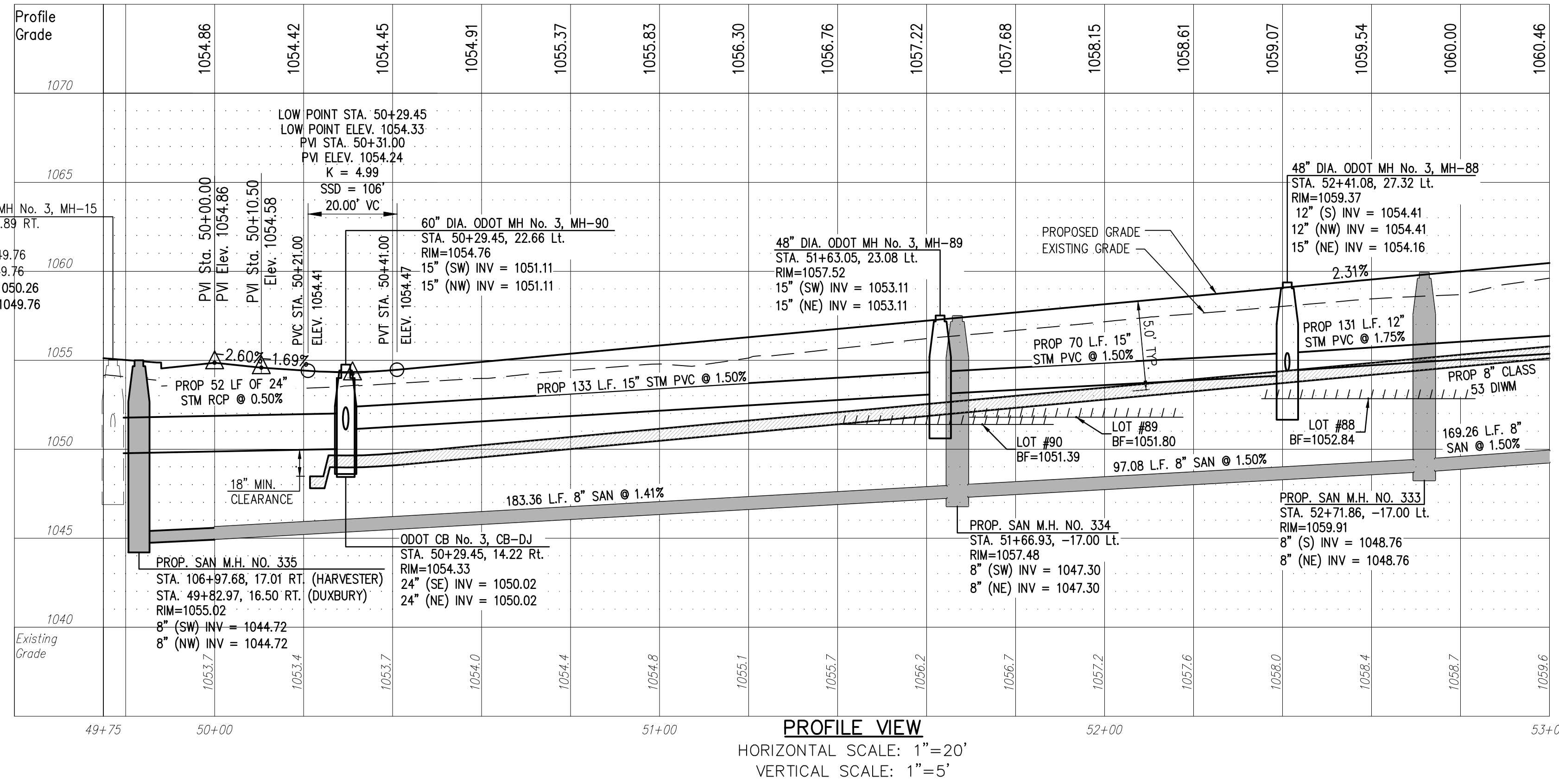
| UNIT | CONNECTION AT MAIN | LATERAL TERMINATION | LENGTH | INVERT |
|------|----------------------|----------------------|--------|---------|
| 88 | 52+33.25, 27.88' Lt. | 52+35.38, 40.00' Rt. | 67.92' | 1054.80 |
| 89 | 51+71.17, 24.57' Lt. | 51+81.48, 40.00' Rt. | 65.43' | 1053.97 |
| 90 | 51+76.65, 25.43' Lt. | 51+73.82, 40.00' Lt. | 14.78' | 1054.05 |
| 91 | 52+96.09, 34.21' Lt. | 52+95.87, 40.00' Lt. | 5.79' | 1055.76 |
| 157 | 50+67.59, 22.79' Lt. | 50+67.53, 40.00' Lt. | 17.21' | 1052.43 |

Underground Utilities

2 Working Days Before You Dig
 Call 800-362-2764 (Toll Free)
 Ohio Utilities Protection Service

Non-members Must Be Called Directly
 Call 800-925-0988 (Toll Free)
 Oil & Gas Producers Utility Protection Service

NOTE:
 ALL OIL AND GAS WELL REMOVALS, PLUGGING/CAPPING, AND ABANDONMENTS SHALL BE IN ACCORDANCE WITH ALL ASSOCIATED REGULATIONS FOR SUCH REMOVALS, INCLUDING BUT NOT LIMITED TO, ODNR, LOCAL, STATE, AND FEDERAL.
 EXISTING HIGH PRESSURE GAS MAIN SHALL BE LOCATED AND PROTECTED PRIOR TO AND THROUGHOUT CONSTRUCTION.



| REV. | DATE | DESCRIPTION |
|----------|------|-----------------------------|
| 06/10/16 | | REVISED PER AGENCY COMMENTS |
| 7/11/16 | | REVISED PER COUNTY COMMENTS |

THE PRESERVE AT MILLER'S FARM
 PHASE 3
 SE CORNER OF SR 18 AND MEDINA LINE RD
 COPLEY, OHIO 44321

PLAN AND PROFILE
 DUXBURY DRIVE

ISSUED FOR:

| | |
|--------------|------------|
| PERMIT | 04-06-2016 |
| BID | |
| CONSTRUCTION | |
| AS-BUILT | |

| | |
|-----------------|----------|
| PROJECT MANAGER | DESIGNER |
| MAL | ALF |

JOB NO.
2013258.03

17/29