

LEGEND

- SEE GENERAL LEGEND, SHEET 03
- PROPOSED ROLLED CURB AND CUTTER
- PROPOSED WALK
- PROPOSED WALK BY OTHERS
- PROPOSED WATER LATERAL
- PROPOSED SANITARY LATERAL
- PROPOSED STORM LATERAL
- PROPOSED WATER MAIN
- PROPOSED SANITARY MAIN
- PROPOSED STORM MAIN
- PROPOSED C/L OF CONSTRUCTION
- PROPOSED C/L OF RIGHT OF WAY
- PROPOSED MONUMENT BOX
- PROPOSED BOTTOM OF FOOTER ELEVATION
- PROPOSED ASPHALT PAVEMENT
- PROPOSED DRAINAGE ACCESS EASEMENT
- PHASE 1 DRAINAGE ACCESS EASEMENT

STORM SEWER
 REFER TO GENERAL NOTES SHEET 04 FOR CONSTRUCTION NOTES.
 ALL RCP PIPE SHALL BE CLASS 4 PER ODOT 706.02
 ALL HDPE PIPE SHALL BE SMOOTH LINED PER ODOT 707.33
 ALL PVC PIPE SHALL BE SDR 35 PER ODOT 707.45

DUXBURY DRIVE MONUMENT BOX SCHEDULE

#	STATION	OFFSET
7	51+58.37	0.00 DUXBURY
8	50+00.00	0.00 DUXBURY
	107+14.18	0.00 HARVESTER

STATION AND OFFSET TAKEN FROM CONSTRUCTION C/L

DUXBERRY DRIVE WATER MAIN FITTING SCHEDULE

ITEM	STATION	OFFSET
WATER VALVE	50+34.22	20.42' Rt.
11.25" HORIZONTAL BEND	51+77.87	22.60' Rt.
11.25" HORIZONTAL BEND	52+60.85	21.14' Rt.
16" HYD. ASSEMBLY, TYPE B	52+94.98	15.64' Rt.
45" VERTICAL BEND	50+24.70	
45" VERTICAL BEND	50+25.88	

*STATION AND OFFSET TAKEN TO CENTER OF HYDRANT

NOTE:
 ANY SERVICE LATERAL CROSSING WATER MAIN SHALL MAINTAIN 18" MINIMUM CLEARANCE.
 ALL WATER MAIN PIPE JOINTS WITHIN AREAS OF FILL MUST BE RESTRAINED.

BENCHMARK #2
 RAILROAD SPIKE IN POLE
 ELEVATION = 1101.95'
 SEE SHEET 02 FOR LOCATION OF ALL BENCHMARKS

PROPOSED STRUCTURE TABLE

Structure Name	Structure Details, SEE SHEET 25
CB-CQ	ODOT CB No. 3A STA. 52+41.08, 13.00 Rt. RIM = 1059.12 1058.76 12" PVC INV (SE) = 1054.55 1055.06 4" CPP (SW) INV = 1056.06
CB-CR	ODOT CB No. 3A STA. 52+41.08, -13.00 Lt. RIM = 1059.12 1058.79 12" PVC INV (NW) = 1054.55 1054.70 12" PVC INV (SE) = 1054.55 1054.70 4" CPP (SW) INV = 1055.99
CB-DI	ODOT CB No. 3 STA. 50+29.45, -14.22 Lt. RIM = 1054.33 1054.04 24" RCP INV (NW) = 1050.16 1050.39 15" PVC Pipe INV (SE) = 1050.91 1050.94 4" CPP (W) INV = 1051.54

DUXBURY DRIVE WATER CONNECTION SCHEDULE

UNIT	CONNECTION AT MAIN	LATERAL TERMINATION	LENGTH
88	52+58.24, 21.31' Rt.	52+56.94, 39.88' Rt.	18.63'
89	51+72.48, 22.03' Rt.	51+74.11, 40.00' Rt.	18.06'
90	51+56.17, 20.96' Rt.	51+54.71, 40.00' Lt.	60.98'
91	52+84.54, 18.80' Rt.	52+89.93, 39.78' Lt.	59.01'
157	50+72.72, 20.46' Rt.	50+72.78, 40.00' Lt.	69.46'

DUXBURY DRIVE SANITARY CONNECTION SCHEDULE

UNIT	CONNECTION AT MAIN	LATERAL TERMINATION	LENGTH	INV. @ MAIN	INV. @ STUB
88	52+54.21, 19.55' Lt.	52+47.03, 40.00' Rt.	60.01'	1048.68	1049.28
89	51+78.01, 18.62' Lt.	51+86.43, 40.00' Rt.	59.26'	1047.70	1048.29
90	51+83.31, 20.05' Lt.	51+79.85, 40.00' Lt.	29.18'	1047.63	1047.83
157	50+62.61, 17.11' Lt.	50+62.53, 40.00' Lt.	22.89'	1046.00	1046.23

DUXBURY DRIVE STORM CONNECTION SCHEDULE

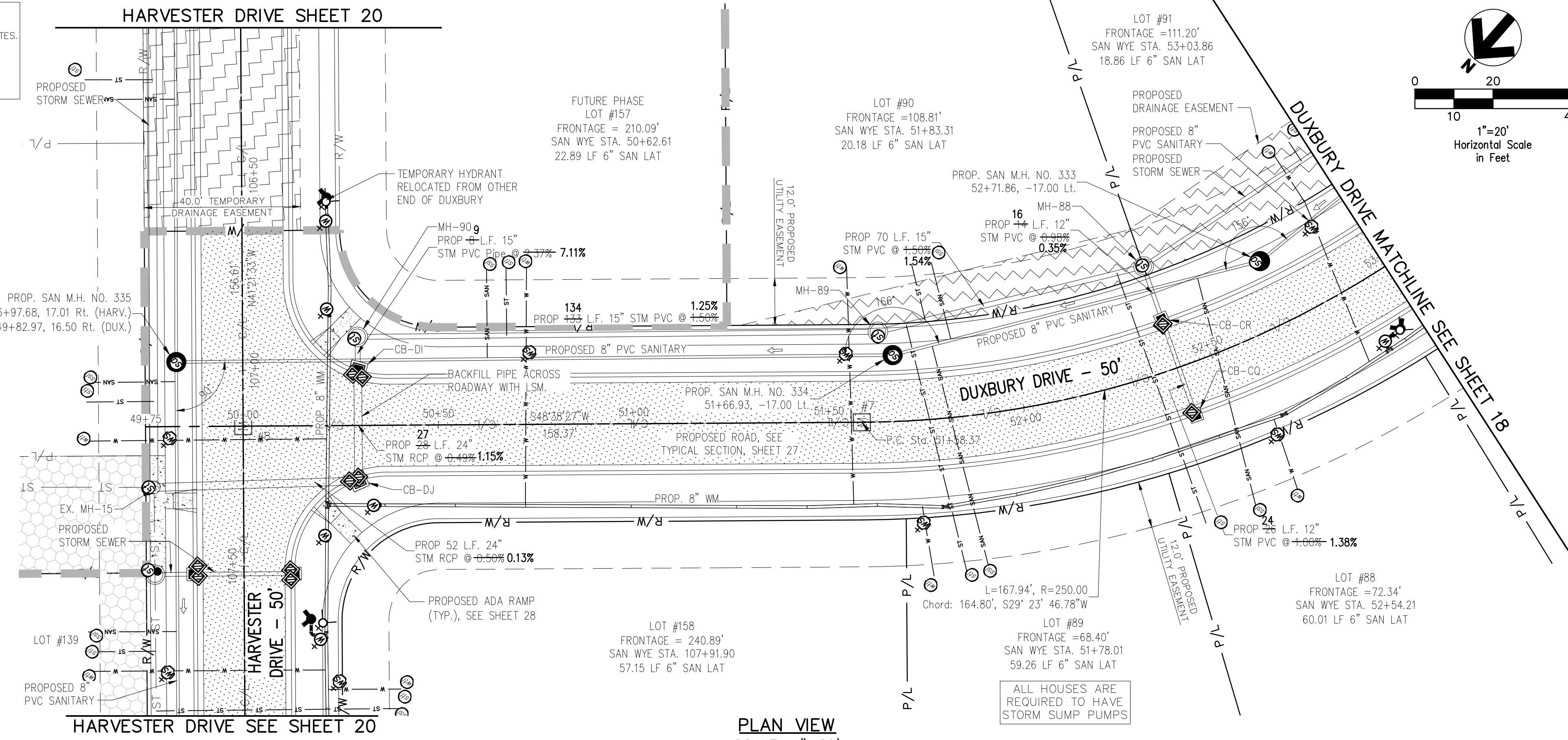
UNIT	CONNECTION AT MAIN	LATERAL TERMINATION	LENGTH	INVERT
88	52+33.25, 27.88' Lt.	52+35.38, 40.00' Rt.	67.92'	1054.80
89	51+71.17, 24.57' Lt.	51+81.46, 40.00' Rt.	65.43'	1053.97
90	51+76.65, 25.43' Lt.	51+79.84, 40.00' Lt.	14.78'	1054.05
91	52+96.09, 34.31' Lt.	52+95.87, 40.00' Lt.	5.79'	1055.76
157	50+67.39, 22.79' Lt.	50+67.53, 40.00' Lt.	17.21'	1052.43

Underground Utilities

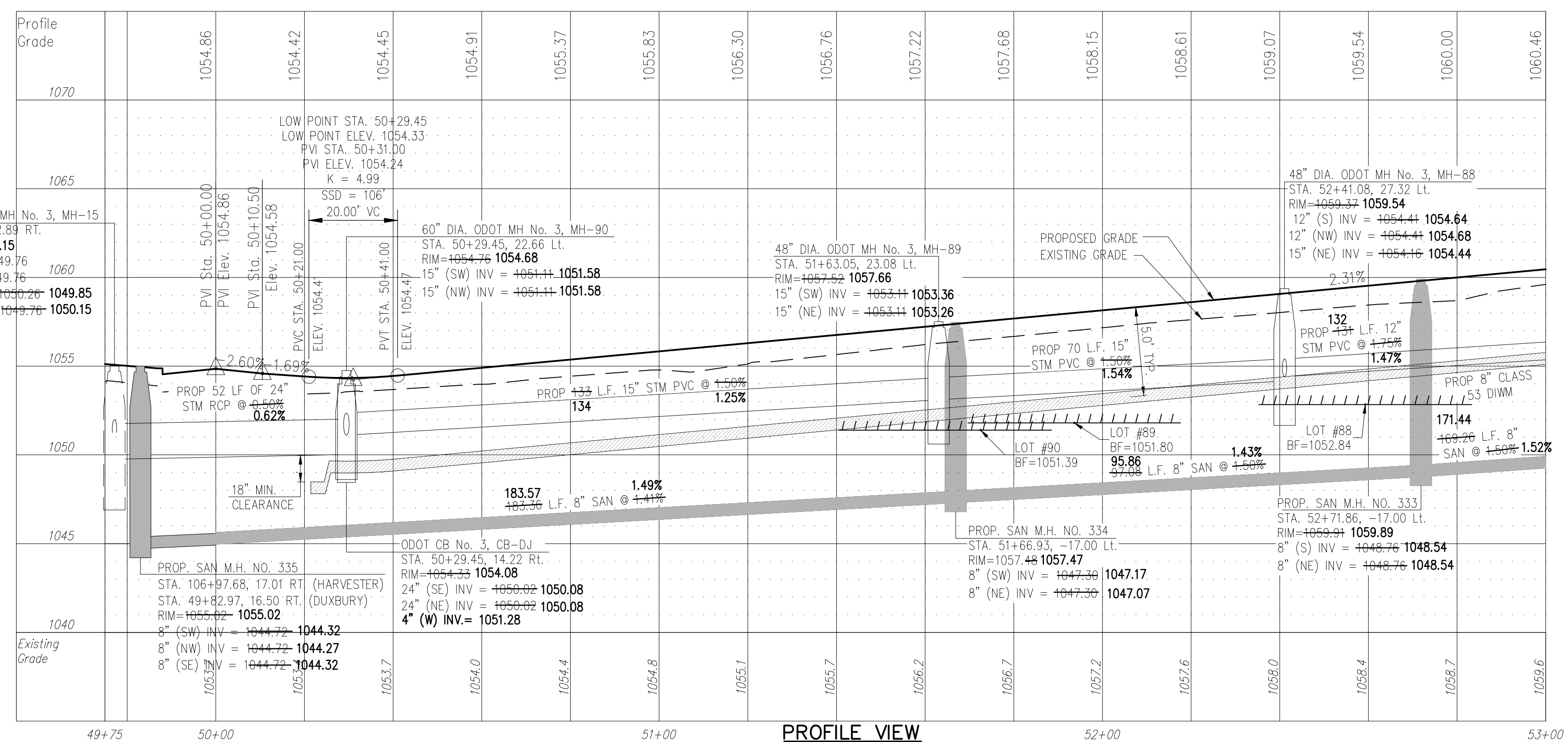
2 Working Days Before You Dig
 Call 800-362-2764 (Toll Free)
 Ohio Utilities Protection Service

Non-members Must Be Called Directly
 Call 800-925-0988 (Toll Free)
 Oil & Gas Producers Utility Protection Service

NOTE:
 ALL OIL AND GAS WELL REMOVALS, PLUGGING/CAPPING, AND ABANDONMENTS SHALL BE IN ACCORDANCE WITH ALL ASSOCIATED REGULATIONS FOR SUCH REMOVALS, INCLUDING BUT NOT LIMITED TO, ODNR, LOCAL, STATE, AND FEDERAL.
 EXISTING HIGH PRESSURE GAS MAIN SHALL BE LOCATED AND PROTECTED PRIOR TO AND THROUGHOUT CONSTRUCTION.



PLAN VIEW
 SCALE: 1"=20'



PROFILE VIEW
 HORIZONTAL SCALE: 1"=20'
 VERTICAL SCALE: 1"=5'

REV.	DATE	DESCRIPTION

THE PRESERVE AT MILLER'S FARM
 PHASE 3 AS-BUILTS
 SE CORNER OF SR 18 AND MEDINA LINE RD
 COPLEY, OHIO 44321

PLAN AND PROFILE
DUXBURY DRIVE

ISSUED FOR:

PERMIT	04-06-2016
BID	
CONSTRUCTION	
AS-BUILT	11-04-2016

PROJECT MANAGER: MAL DESIGNER: ALF

JOB NO.
2013258.03

17/29