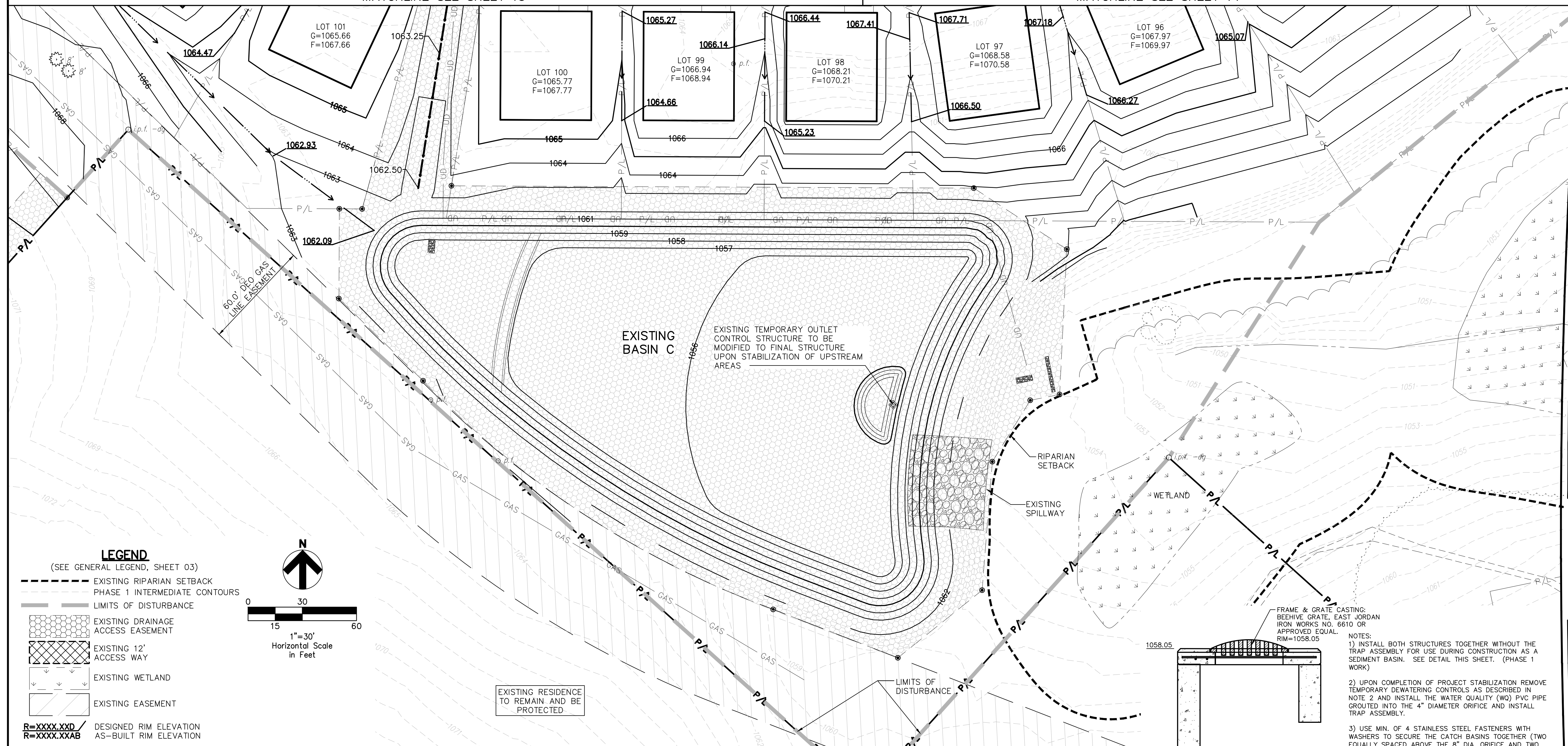


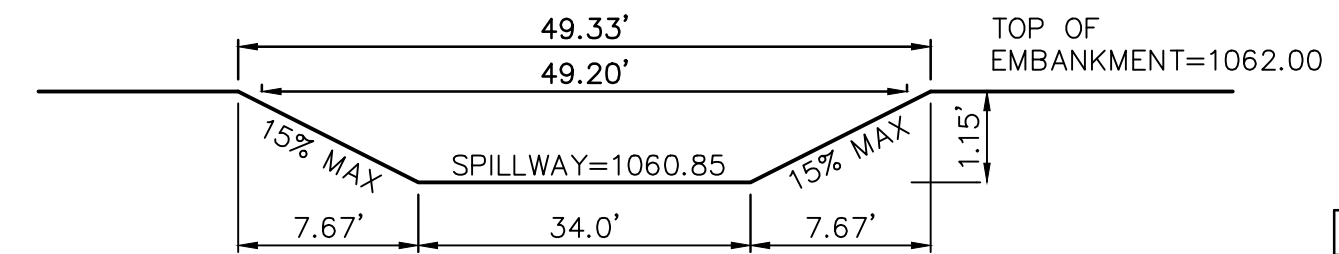
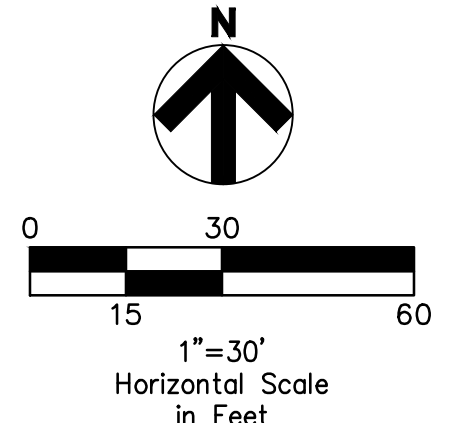
MATCHLINE SEE SHEET 13

MATCHLINE SEE SHEET 14



LEGEND

- (SEE GENERAL LEGEND, SHEET 03)
- EXISTING RIPARIAN SETBACK
 - - - PHASE 1 INTERMEDIATE CONTOURS
 - LIMITS OF DISTURBANCE
 - [Pattern] EXISTING DRAINAGE ACCESS EASEMENT
 - [Pattern] EXISTING 12' ACCESS WAY
 - [Pattern] EXISTING WETLAND
 - [Pattern] EXISTING EASEMENT
 - R=XXXX.XXD / AS=XXXX.XXAB DESIGNED RIM ELEVATION / AS-BUILT RIM ELEVATION



NOTE: THE EMERGENCY SPILLWAY SHALL HAVE A 4' WIDE CONCRETE SECTION EQUAL TO THE 4" CONCRETE WALK, WITH A MEDIUM BROOM FINISH CENTERED IN THE SPILLWAY ACROSS THE LENGTH BETWEEN MAXIMUM WATER SURFACE ELEVATIONS.

EXISTING EMERGENCY SPILLWAY
N.T.S.

EXTENDED DETENTION BASIN C

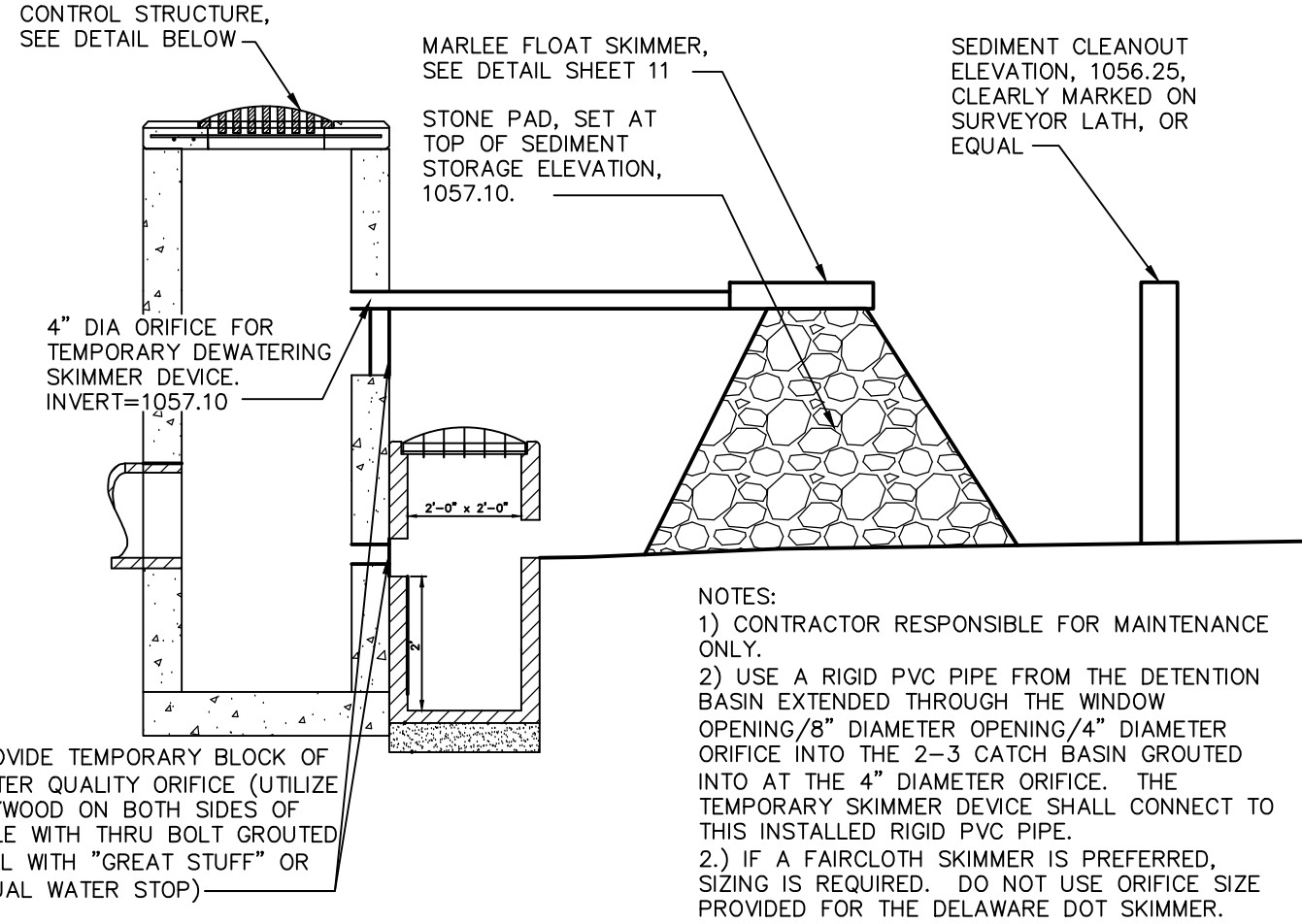
10 YEAR HWE= 1059.09
 100 YEAR HWE= 1060.81
 WATER QUALITY VOLUME ELEVATION= 1056.25
 WATER QUALITY VOLUME REQUIRED= 13,632 CUFT
 WATER QUALITY VOLUME PROVIDED= 14,583 CUFT

Underground Utilities

2 Working Days Before You Dig
 Call 800-362-2764 (Toll Free)
 Ohio Utilities Protection Service

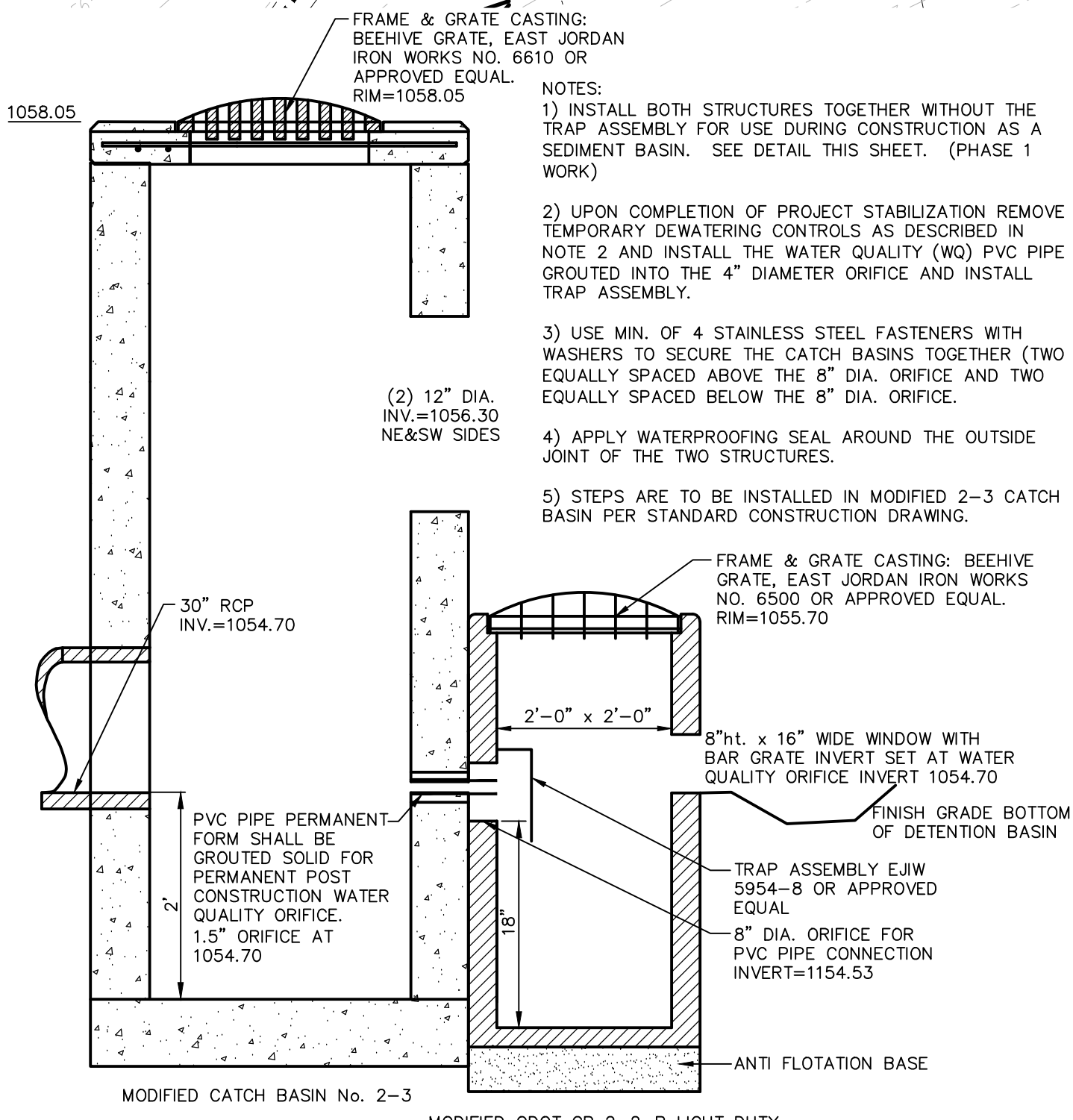
Non-members Must Be Called Directly
 Call 800-925-0988 (Toll Free)
 Oil & Gas Producers Utility Protection Service

NOTE:
 ALL OIL AND GAS WELL REMOVALS, PLUGGING/CAPPING, AND ABANDONMENTS SHALL BE IN ACCORDANCE WITH ALL ASSOCIATED REGULATIONS FOR SUCH REMOVALS, INCLUDING BUT NOT LIMITED TO, ODNR, LOCAL, STATE, AND FEDERAL.
 EXISTING HIGH PRESSURE GAS MAIN SHALL BE LOCATED AND PROTECTED PRIOR TO AND THROUGHOUT CONSTRUCTION.



NOTES:
 1) CONTRACTOR RESPONSIBLE FOR MAINTENANCE ONLY.
 2) USE A RIGID PVC PIPE FROM THE DETENTION BASIN EXTENDED THROUGH THE WINDOW OPENING/8" DIAMETER OPENING/4" DIAMETER ORIFICE INTO THE 2-3 CATCH BASIN GROUDED INTO AT THE 4" DIAMETER ORIFICE. THE TEMPORARY SKIMMER DEVICE SHALL CONNECT TO THIS INSTALLED RIGID PVC PIPE.
 3) IF A FAIRCLOTH SKIMMER IS PREFERRED, SIZING IS REQUIRED. DO NOT USE ORIFICE SIZE PROVIDED FOR THE DELAWARE DOT SKIMMER.

SEDIMENT BASIN #5, TEMPORARY OUTLET INSTALLED DURING PHASE 1
N.T.S.



NOTES:
 1) INSTALL BOTH STRUCTURES TOGETHER WITHOUT THE TRAP ASSEMBLY FOR USE DURING CONSTRUCTION AS A SEDIMENT BASIN. SEE DETAIL THIS SHEET. (PHASE 1 WORK)
 2) UPON COMPLETION OF PROJECT STABILIZATION REMOVE TEMPORARY DEWATERING CONTROLS AS DESCRIBED IN NOTE 2 AND INSTALL THE WATER QUALITY (WQ) PVC PIPE GROUDED INTO THE 4" DIAMETER ORIFICE AND INSTALL TRAP ASSEMBLY.
 3) USE MIN. OF 4 STAINLESS STEEL FASTENERS WITH WASHERS TO SECURE THE CATCH BASIN TOGETHER (TWO EQUALLY SPACED ABOVE THE 8" DIA. ORIFICE AND TWO EQUALLY SPACED BELOW THE 8" DIA. ORIFICE).
 4) APPLY WATERPROOFING SEAL AROUND THE OUTSIDE JOINT OF THE TWO STRUCTURES.
 5) STEPS ARE TO BE INSTALLED IN MODIFIED 2-3 CATCH BASIN PER STANDARD CONSTRUCTION DRAWING.

BASIN "C" CONTROL STRUCTURE
N.T.S.

REV.	DATE	DESCRIPTION
06/10/16		REVISED PER AGENCY COMMENTS
7/11/16		REVISED PER COUNTY COMMENTS

THE PRESERVE AT MILLER'S FARM
PHASE 3
 SE CORNER OF SR 18 AND MEDINA LINE RD
 COPLEY, OHIO 44321

FINAL GRADING PLAN WEST
AND BASIN C MODIFICATIONS

ISSUED FOR:

PERMIT	04-06-2016
BID	
CONSTRUCTION	
AS-BUILT	

PROJECT MANAGER	DESIGNER
MAL	ALF

JOB NO.
2013258.03

15/29