

**LEGEND**  
 SEE GENERAL LEGEND, SHEET 03  
 PROPOSED ROLLED CURB AND GUTTER  
 PROPOSED WALK  
 PROPOSED WALK BY OTHERS  
 PROPOSED WATER LATERAL  
 PROPOSED SANITARY LATERAL  
 PROPOSED STORM LATERAL  
 PROPOSED WATER MAIN  
 PROPOSED SANITARY MAIN  
 PROPOSED STORM MAIN  
 PROPOSED C/L OF CONSTRUCTION  
 PROPOSED C/L OF RIGHT OF WAY  
 PROPOSED MONUMENT BOX  
 PROPOSED BOTTOM OF FOOTER ELEVATION  
 PROPOSED ASPHALT PAVEMENT  
 PROPOSED DRAINAGE ACCESS EASEMENT  
 PHASE 1 DRAINAGE ACCESS EASEMENT

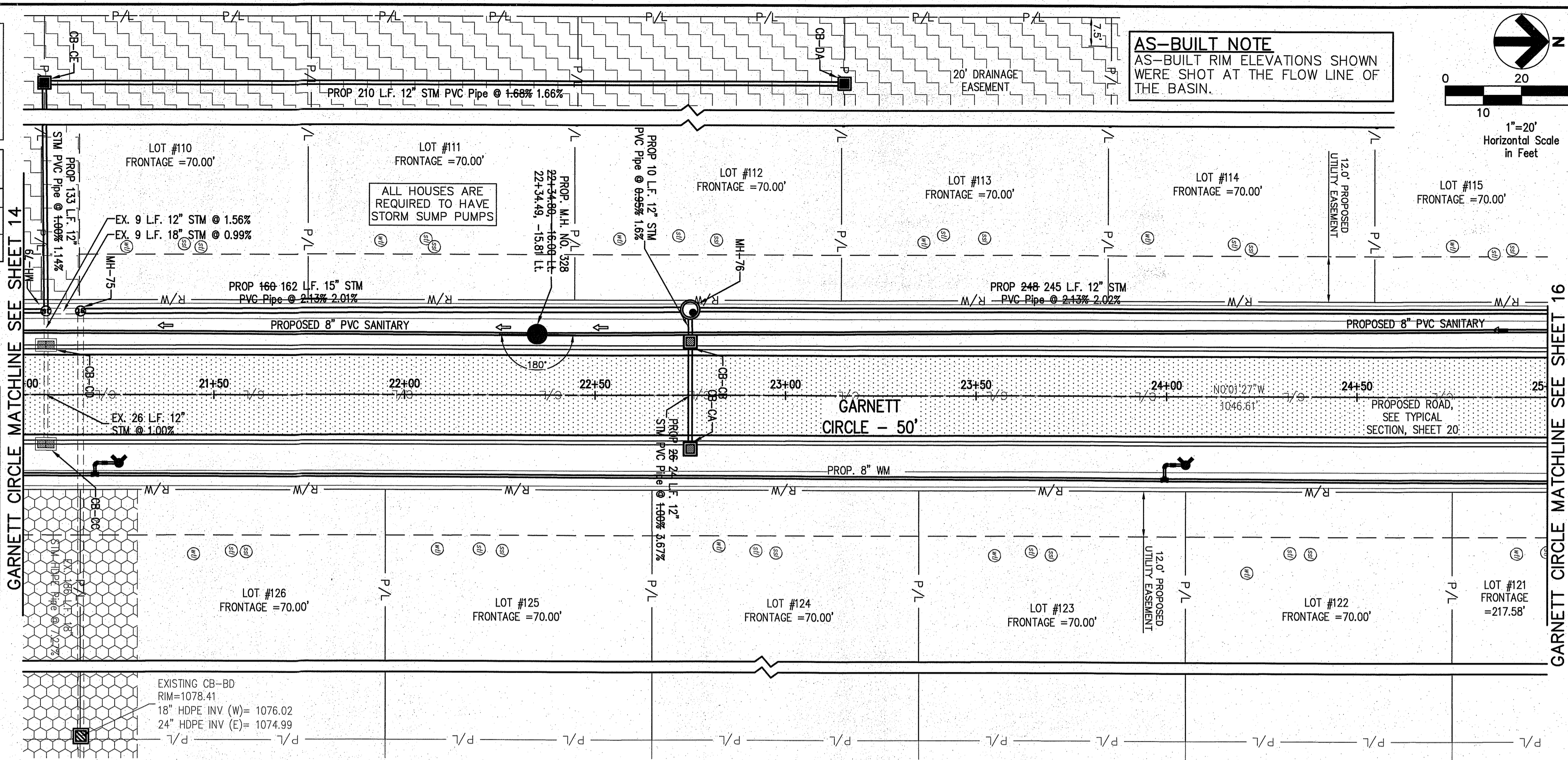
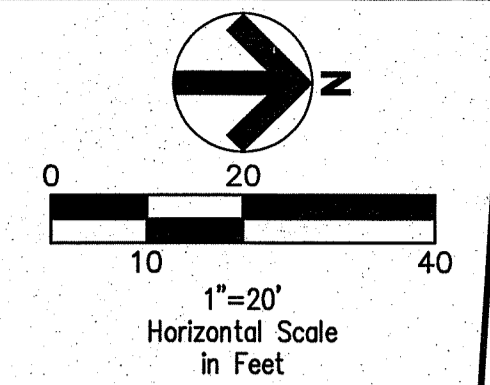
**NOTE:**  
 ANY SANITARY SERVICE LATERAL CROSSING WATER MAIN SHALL MAINTAIN 18" MINIMUM CLEARANCE.  
 ALL WATER MAIN PIPE JOINTS WITHIN AREAS OF FILL MUST BE RESTRAINED.

**GARNETT CIRCLE WATER MAIN FITTING SCHEDULE**

ITEM	STATION	OFFSET
6" HYD. ASSEMBLY, TYPE B	*21+25.08	18.00' RT
6" HYD. ASSEMBLY, TYPE B	*24+05.00	18.00' RT

\* STATION AND OFFSET TAKEN TO CENTER OF HYDRANT  
 CONTROL POINT #2634  
 8" REBAR W/CAP "CONTROL"  
 Northing : 536240.951'  
 Easting : 2192397.111'  
 Elevation : 1127.17'  
 \*SEE SHEET 02 FOR LOCATION OF ALL BENCHMARKS

**AS-BUILT NOTE**  
 AS-BUILT RIM ELEVATIONS SHOWN WERE SHOT AT THE FLOW LINE OF THE BASIN.



Structure Name	Structure Details	Structure Name	Structure Details
CB-CA	ODOT CB 3A STA. 22+75.13-00 Rt. STA. 22+74.53, 12.32 Rt. RIM = 1097.70 1097.20 12" PVC Pipe INV (W)=1093.61 1093.90 4" CPP Pipe INV (N)=1094.50	EXISTING CB-CD	ODOT CB 3 STA. 21+05.90, -13.00 Rt. RIM = 1094.85 12" PVC Pipe INV (E)=1090.28 12" PVC Pipe INV (W)=1090.28
CB-CB	ODOT CB 3A STA. 22+75.13-00 Lt. STA. 22+75.40, -11.98 Lt. RIM = 1097.70 1097.17 12" PVC Pipe INV (E)=1093.55 1093.02 12" PVC Pipe INV (W)=1093.55 1093.32 4" CPP Pipe INV (NW)=1094.07	CB-CE	ODOT CB 2-2B STA. 21+04.64, -155.00 Lt. STA. 21+04.73, -155.20 Lt. RIM = 1096.01 1096.06 12" PVC Pipe INV (N)=1091.47 1091.66 12" PVC Pipe INV (E)=1091.47 1091.66
EXISTING CB-CC	ODOT CB 3 STA. 21+05.90, 13.00 Rt. RIM = 1094.85 12" PVC Pipe INV (W)=1090.54	CB-DA	ODOT CB 2-2B STA. 23+14.64, -155.00 Lt. STA. 23+14.36, -154.51 Lt. RIM = 1096.07 1100.15 12" PVC Pipe INV (S)=1095.00 1095.15

**GARNETT CIRCLE CONNECTION SCHEDULE**

UNIT	CONNECTION AT MAIN	LATERAL TERMINATION	LENGTH	INVERT*	RISER HT
110	SAN 21+43.64, 16.40 Lt.	21+43.64, 40.00 Lt.	23.75	1082.35	-
	ST 21+37.84, 22.00 Rt.	21+37.84, 40.00 Rt.	18.00	1081.21	-
	WAT 21+27.84, 21.40 Rt.	21+27.84, 40.00 Rt.	61.40	-	-
111	SAN 22+11.24, 16.10 Lt.	21+11.24, 40.00 Lt.	23.90	1085.69 13'	-
	ST 22+05.24, 22.00 Lt.	22+05.24, 40.00 Lt.	18.00	1092.65	-
	WAT 21+95.24, 20.89 Rt.	21+95.24, 40.00 Lt.	60.90	-	-
112	SAN 22+81.24, 16.26 Lt.	22+81.24, 40.00 Lt.	23.75	1087.98 14'	-
	ST 22+68.75, 22.49 Lt.	22+68.75, 40.00 Lt.	17.50	1094.01	-
	WAT 22+55.75, 21.09 Rt.	22+57.75, 40.00 Lt.	61.09	-	-
113	SAN 23+45.24, 16.65 Lt.	23+45.24, 40.00 Lt.	23.35	1090.72 5'	-
	ST 23+45.24, 22.51 Lt.	23+49.24, 40.00 Lt.	17.50	1095.65	-
	WAT 23+35.24, 21.37 Rt.	23+35.24, 40.00 Lt.	61.37	-	-
114	SAN 24+21.25, 17.03 Lt.	24+21.25, 40.00 Lt.	22.96	1092.48 5'	-
	ST 24+18.25, 22.51 Lt.	24+18.25, 40.00 Lt.	17.50	1097.18	-
	WAT 23+93.60, 21.60 Rt.	23+93.60, 40.00 Lt.	61.60	-	-
115	SAN 24+91.24, 17.42 Lt.	24+91.24, 40.00 Lt.	22.57	1093.21 4'	-
	ST 24+86.24, 22.50 Lt.	24+89.24, 40.00 Lt.	17.50	1098.65	-
	WAT 24+79.24, 21.90 Rt.	24+79.24, 40.00 Lt.	61.96	-	-
121	WAT 24+90.54, 22.72 Rt.	24+90.54, 40.00 Rt.	17.28	-	-
122	SAN 24+39.75, 17.14 Lt.	24+39.75, 40.00 Lt.	57.13	1091.27 3'	-
	ST 24+34.75, 22.50 Lt.	24+34.75, 40.00 Lt.	62.50	1099.87	-
	WAT 24+24.75, 22.40 Rt.	24+24.75, 40.00 Rt.	17.80	-	-
123	SAN 23+63.75, 16.75 Lt.	23+63.75, 40.00 Lt.	56.75	1099.52 3'	-
	ST 23+63.75, 22.50 Lt.	23+63.75, 40.00 Lt.	62.50	1097.11	-
	WAT 23+53.75, 22.10 Rt.	23+53.75, 40.00 Rt.	17.90	-	-
124	SAN 22+99.75, 15.36 Lt.	22+99.75, 40.00 Rt.	56.36	1084.77	-
	ST 22+93.75, 22.50 Lt.	22+93.75, 40.00 Rt.	62.50	1098.98	-
	WAT 22+83.75, 21.84 Rt.	22+83.75, 40.00 Rt.	18.16	1095.49	-
125	SAN 22+27.05, 16.03 Lt.	22+27.05, 40.00 Rt.	55.65	1082.75	-
	ST 22+22.05, 22.00 Lt.	22+22.05, 40.00 Rt.	62.00	1082.75	-
	WAT 22+12.05, 21.61 Rt.	22+12.05, 40.00 Rt.	18.39	1092.00	-
126	SAN 21+53.75, 16.33 Lt.	21+53.75, 40.00 Rt.	56.33	1089.20	-
	ST 21+53.75, 22.00 Lt.	21+53.75, 40.00 Rt.	62.00	1089.20	-
	WAT 21+43.75, 21.45 Rt.	21+43.75, 40.00 Rt.	18.55	1088.55	-

\* INVERT AT THE LATERAL TERMINATION

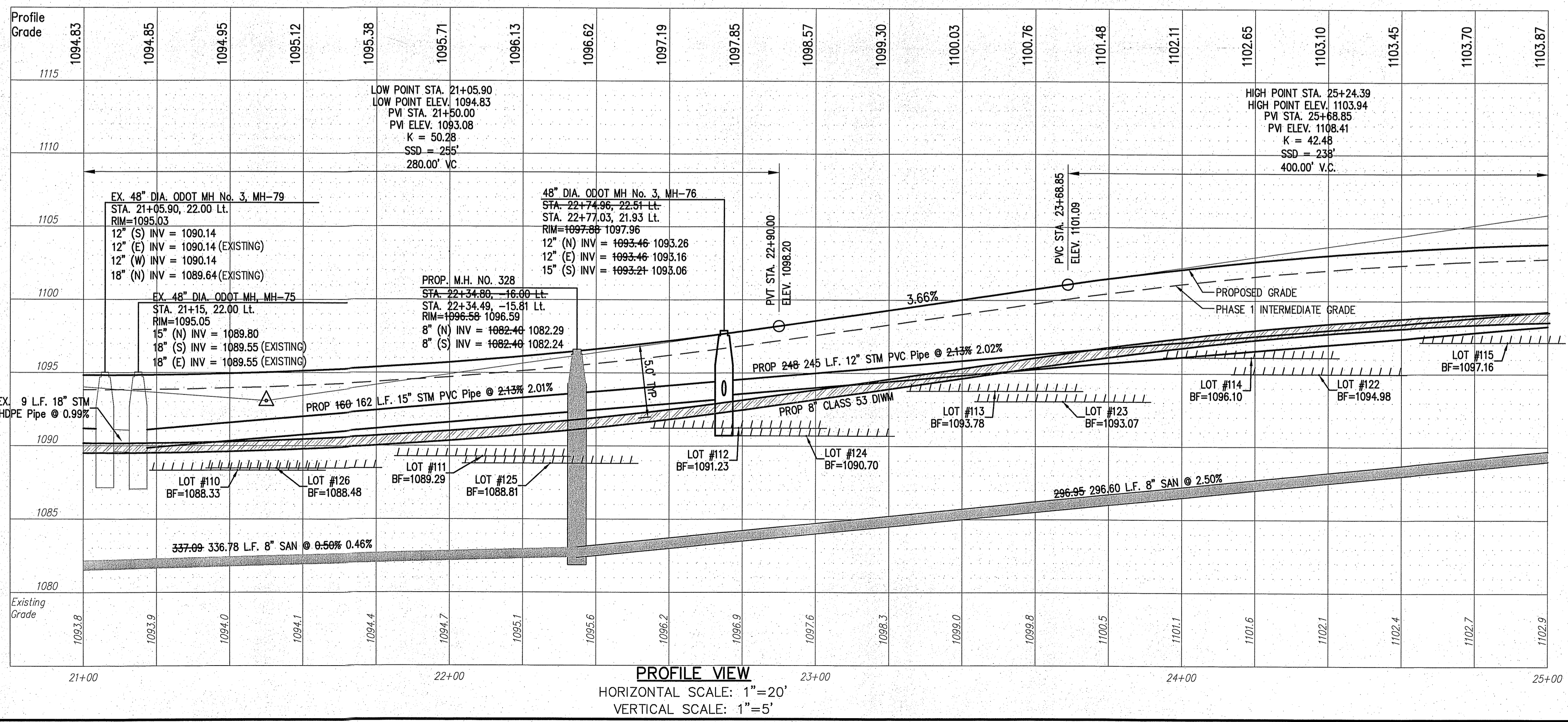
**STORM SEWER**  
 REFER TO GENERAL NOTES SHEET 04 FOR GENERAL NOTES.  
 ALL RCP PIPE SHALL BE CLASS 4 PER ODOT 706.02  
 ALL HDPE PIPE SHALL BE SMOOTH LINED PER ODOT 707.33  
 ALL PVC PIPE SHALL BE SDR 35 PER ODOT 707.45

**Underground Utilities**

2 Working Days Before You Dig  
 Call 800-362-2764 (Toll Free)  
 Ohio Utilities Protection Service

Non-members Must Be Called Directly  
 Call 800-925-0988 (Toll Free)  
 Oil & Gas Producers Utility Protection Service

**NOTE:**  
 ALL OIL AND GAS WELL REMOVALS, PLUGGING/CAPPING, AND ABANDONMENTS SHALL BE IN ACCORDANCE WITH ALL ASSOCIATED REGULATIONS FOR SUCH REMOVALS, INCLUDING BUT NOT LIMITED TO, ODNR, LOCAL, STATE, AND FEDERAL.  
 EXISTING HIGH PRESSURE GAS MAIN SHALL BE LOCATED AND PROTECTED PRIOR TO AND THROUGHOUT CONSTRUCTION.



REV.	DATE	DESCRIPTION
01	07/17/15	REVISED PER COUNTY COMMENTS
	07/30/15	DOES REVISED COMMENTS
	8/20/15	REVISED PER COUNTY COMMENTS

THE PRESERVE AT MILLER'S FARM  
 PHASE 2  
 SE CORNER OF SR 18 AND MEDINA LINE RD  
 COPLEY, OHIO 44321

**PLAN AND PROFILE**  
 GARNETT CIRCLE

ISSUED FOR:

PERMIT	
BID	
CONSTRUCTION	
AS-BUILT	

PROJECT MANAGER: MAL  
 DESIGNER: ALF

JOB NO.  
**2013258.02**

**15/21**