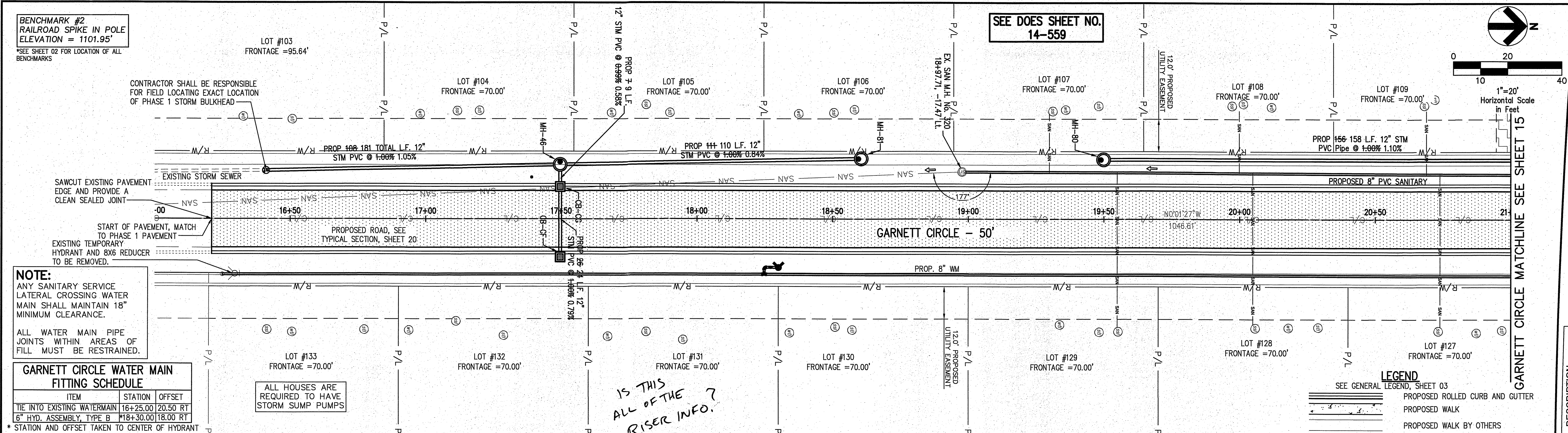
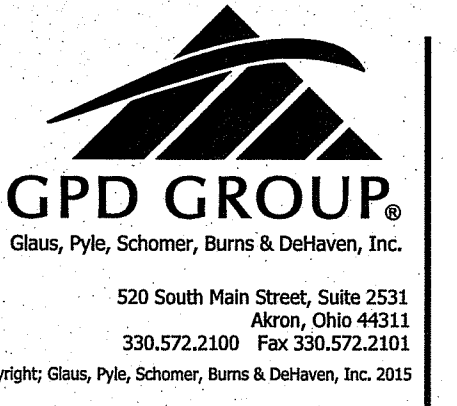


# NEEDS ADDITIONAL PLANS FOR BRATON ENTRANCE - (4/4)



**NOTE:**  
ANY SANITARY SERVICE LATERAL CROSSING WATER MAIN SHALL MAINTAIN 18" MINIMUM CLEARANCE.  
ALL WATER MAIN PIPE JOINTS WITHIN AREAS OF FILL MUST BE RESTRAINED.

**GARNETT CIRCLE WATER MAIN FITTING SCHEDULE**

ITEM	STATION	OFFSET
TIE INTO EXISTING WATERMAIN	16+25.00	20.50 RT
6" HYD. ASSEMBLY, TYPE B	18+30.00	18.00 RT

\* STATION AND OFFSET TAKEN TO CENTER OF HYDRANT

**GARNETT CIRCLE CONNECTION SCHEDULE**

UNIT	CONNECTION AT MAIN	LATERAL TERMINATION	LENGTH	INVERT*	RISER HT	UNIT	CONNECTION AT MAIN	LATERAL TERMINATION	LENGTH	INVERT*	RISER HT
103	SAN INSTALLED DURING PHASE 1 ST 16+48.76, 18.07' LT.	16+48.76, 40.00' LT.	21.93	1086.80		127	SAN 20+73.89, 16.73' LT.	20+73.89, 40.00' RT.	53.72	1082.34	
	WAT 16+28.68, 20.16' RT.	16+28.63, 40.00' LT.	60.16				ST 20+98.89, 22.00' LT.	20+98.89, 40.00' RT.	62.00	1091.33	
104	SAN INSTALLED DURING PHASE 1 ST 17+19.75, 19.48' LT.	17+19.34, 40.00' LT.	20.53	1087.50		128	SAN 20+04.89, 17.01' LT.	20+04.89, 40.00' RT.	57.00	1084.99 3'	
	WAT 16+98.55, 20.13' RT.	16+98.55, 40.00' LT.	60.13				ST 20+29.89, 22.00' LT.	20+29.89, 40.00' RT.	62.00	1092.02	
							WAT 20+19.89, 21.12' RT.	20+19.89, 40.00' RT.	18.88		
105	SAN INSTALLED DURING PHASE 1 ST 17+89.72, 20.87' LT.	17+89.34, 40.00' LT.	18.14	1088.17		129	SAN 19+54.89, 17.22' LT.	19+54.89, 40.00' RT.	57.22	1085.74 4'	
	WAT 17+88.42, 20.81' RT.	17+88.46, 40.00' LT.	60.81				ST 19+49.89, 22.00' LT.	19+49.89, 40.00' RT.	62.00	1092.82	
							WAT 19+34.89, 20.98' RT.	19+34.89, 40.00' RT.	16.02		
106	SAN INSTALLED DURING PHASE 1 ST 18+60.50, 22.27' LT.	18+60.50, 40.00' LT.	17.73	1088.89		130	SAN INSTALLED DURING PHASE 1 ST 18+60.50, 22.27' LT.	18+60.50, 40.00' RT.	62.27	1089.33	
	WAT 18+36.30, 20.20' RT.	18+36.35, 40.00' LT.	60.20				WAT 18+33.30, 20.59' RT.	20+85.26, 40.00' RT.	19.41		
107	SAN INSTALLED DURING PHASE 1 ST 19+49.89, 22.00' LT.	19+49.89, 40.00' LT.	38.00	1086.29 5'		131	SAN INSTALLED DURING PHASE 1 ST 17+94.72, 20.87' LT.	17+94.72, 40.00' RT.	59.88	1088.65	
	WAT 19+39.89, 20.32' RT.	19+39.89, 40.00' LT.	75.66				WAT 17+63.42, 20.81' RT.	17+63.42, 40.00' RT.	18.19		
108	SAN INSTALLED DURING PHASE 1 ST 20+04.89, 22.00' LT.	20+04.89, 40.00' LT.	18.00	1091.83		132	SAN INSTALLED DURING PHASE 1 ST 17+24.75, 19.48' LT.	17+24.75, 40.00' RT.	56.57	1087.95	
	WAT 20+14.89, 20.58' RT.	20+14.89, 40.00' LT.	60.58				WAT 16+53.55, 20.13' RT.	16+53.55, 40.00' RT.	19.87		
109	SAN INSTALLED DURING PHASE 1 ST 20+73.89, 22.00' LT.	20+73.89, 40.00' LT.	18.00	1091.14		133	SAN INSTALLED DURING PHASE 1 ST 16+77.94, 16.65' LT.	16+77.94, 40.00' RT.	58.67	1089.24	
	WAT 20+83.89, 20.58' RT.	20+83.89, 40.00' LT.	60.59				WAT 16+50.49, 20.81' RT.	16+50.50, 40.00' RT.	19.18		

**STORM SEWER**  
REFER TO GENERAL NOTES SHEET 04 FOR GENERAL NOTES.  
ALL RCP PIPE SHALL BE CLASS 4 PER ODOT 706.02  
ALL HDPE PIPE SHALL BE SMOOTH LINED PER ODOT 707.33  
ALL PVC PIPE SHALL BE SDR 35 PER ODOT 707.45

**NOTE:**  
ALL OIL AND GAS WELL REMOVALS, PLUGGING/CAPPING, AND ABANDONMENTS SHALL BE IN ACCORDANCE WITH ALL ASSOCIATED REGULATIONS FOR SUCH REMOVALS, INCLUDING BUT NOT LIMITED TO, ODNR, LOCAL, STATE, AND FEDERAL.  
EXISTING HIGH PRESSURE GAS MAIN SHALL BE LOCATED AND PROTECTED PRIOR TO AND THROUGHOUT CONSTRUCTION.

**AS-BUILT NOTE**  
AS-BUILT RIM ELEVATIONS SHOWN WERE SHOT AT THE FLOW LINE OF THE BASIN.

**PROPOSED STRUCTURE TABLE**

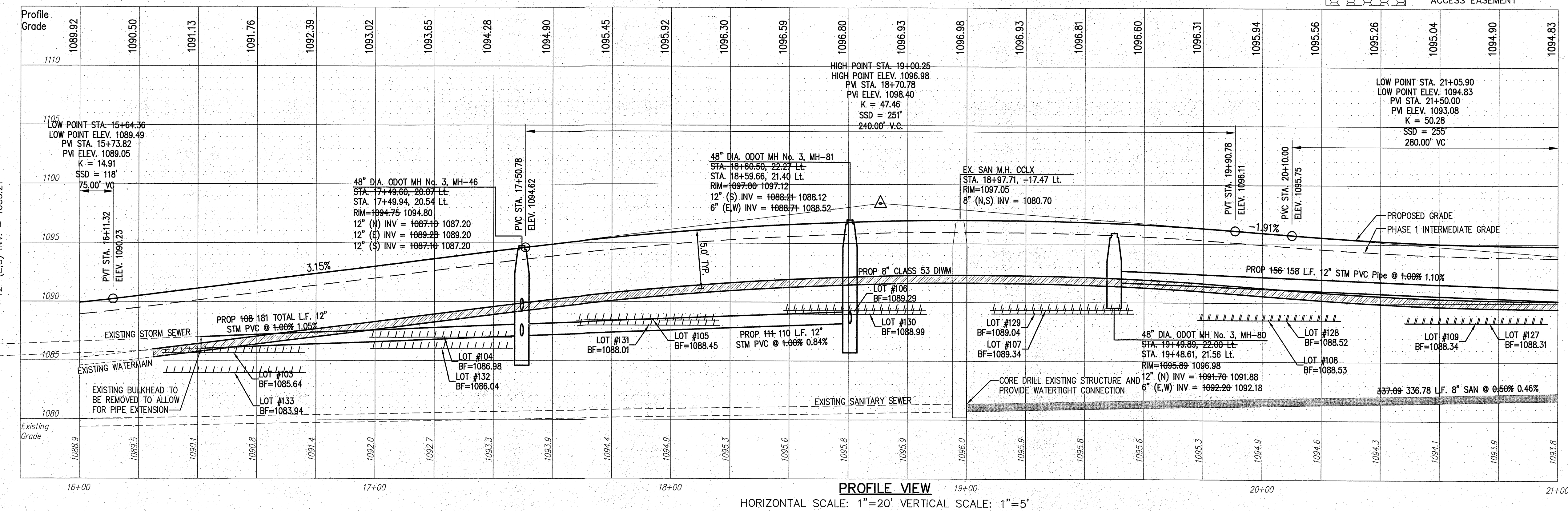
Structure Name	Structure Details
CB-CF	ODOT CB 3A STA. 17+49.60, 13.00 RT. STA. 17+49.67, 12.15 RT. RIM = 1094.61+ 1094.24 12" PVC INV (W)=1089.61+ 1089.39 4" CPP INV (N)=1091.54
CB-CG	ODOT CB 3A STA. 17+49.60, 13.00 RT. STA. 17+49.84, -11.95 LT. RIM = 1094.61+ 1094.15 12" PVC INV (E,W)=1089.35+ 1089.20 4" CPP INV (N)=1091.15

**LEGEND**

SEE GENERAL LEGEND, SHEET 03

- PROPOSED ROLLED CURB AND GUTTER
- PROPOSED WALK
- PROPOSED WALK BY OTHERS
- PROPOSED WATER LATERAL
- PROPOSED SANITARY LATERAL
- PROPOSED STORM LATERAL
- PROPOSED WATER MAIN
- PROPOSED SANITARY MAIN
- PROPOSED STORM MAIN
- PROPOSED C/L OF CONSTRUCTION
- PROPOSED C/L OF RIGHT OF WAY
- PROPOSED MONUMENT BOX
- PROPOSED BOTTOM OF FOOTER ELEVATION
- PROPOSED ASPHALT PAVEMENT
- PROPOSED DRAINAGE ACCESS EASEMENT
- PHASE 1 DRAINAGE ACCESS EASEMENT

REV.	DATE	DESCRIPTION
01	07/17/15	REVISED PER COUNTY COMMENTS
	07/30/15	DOES REVISED COMMENTS
	8/20/15	REVISED PER COUNTY COMMENTS



**THE PRESERVE AT MILLER'S FARM  
PHASE 2  
SE CORNER OF SR 18 AND MEDINA LINE RD  
COPLEY, OHIO 44321**

**PLAN AND PROFILE  
GARNETT CIRCLE**

**ISSUED FOR:**

PERMIT	
BID	
CONSTRUCTION	
AS-BUILT	

**PROJECT MANAGER** MAL      **DESIGNER** ALF

**JOB NO.  
2013258.02**

**14/21**

Drawing Name: O:\2013\2013258\02\survey\201325802\_PP Drive Garnett ASBUILT.dwg  
March 23, 2016 9:25 AM - alifer