

NOTE: (A) ODOT STRUCTURAL BACKFILL, TYPE 2, 703.11

(B) TRENCH BACKFILL: INSTALLATION UNDER PAVEMENT AND/OR WITHIN A 45-DEGREE INFLUENCE LINE FROM THE PAVEMENT EDGE SHALL BE INSTALLED IN ACCORDANCE WITH O.D.O.T. ITEM 304 AGGREGATE BASE. SLAG MATERIAL AND RECYCLED CONCRETE IS NOT ACCEPTABLE. ADDITIONAL TESTS MAY BE REQUIRED ON THE TYPE OF 304 AGGREGATE BASE TO BE USED TO INSURE IT MEETS ODOT SPEC. 703.17. THE COUNTY ENGINEER MAY CONSIDER USE OF OTHER MATERIALS UNDER SPECIAL CONDITIONS. A WRITTEN REQUEST, INCLUDING EVIDENCE THAT THE REPLACEMENT MATERIAL WILL BE SUITABLE FOR BACKFILL MUST BE SUBMITTED FOR REVIEW PRIOR TO ANY APPROVAL BEING ISSUED.

COMPACTION REQUIREMENTS ARE AS FOLLOWS:

(a) UNDER PROPOSED PAVEMENT - ANY BACKFILLING OF TRENCHES MUST BE COMPACTED TO A MINIMUM OF 98% OF THE MATERIAL'S STANDARD PROCTOR MAXIMUM DRY DENSITY WITH THE MATERIAL'S MOISTURE CONTENT ADJUSTED TO WITHIN 2% OF THE OPTIMUM PRIOR TO COMPACTION.

(b) NOT UNDER PROPOSED PAVEMENT BUT WITHIN A 45 DEGREE INFLUENCE FROM THE EDGE OF PAVEMENT - ANY BACKFILLING OF TRENCHES MUST BE COMPACTED TO AT LEAST 95% OF THE MATERIAL'S STANDARD PROCTOR MAXIMUM DRY DENSITY WITH THE MATERIAL'S MOISTURE CONTENT ADJUSTED TO WITHIN 2% OF THE OPTIMUM PRIOR TO COMPACTION.

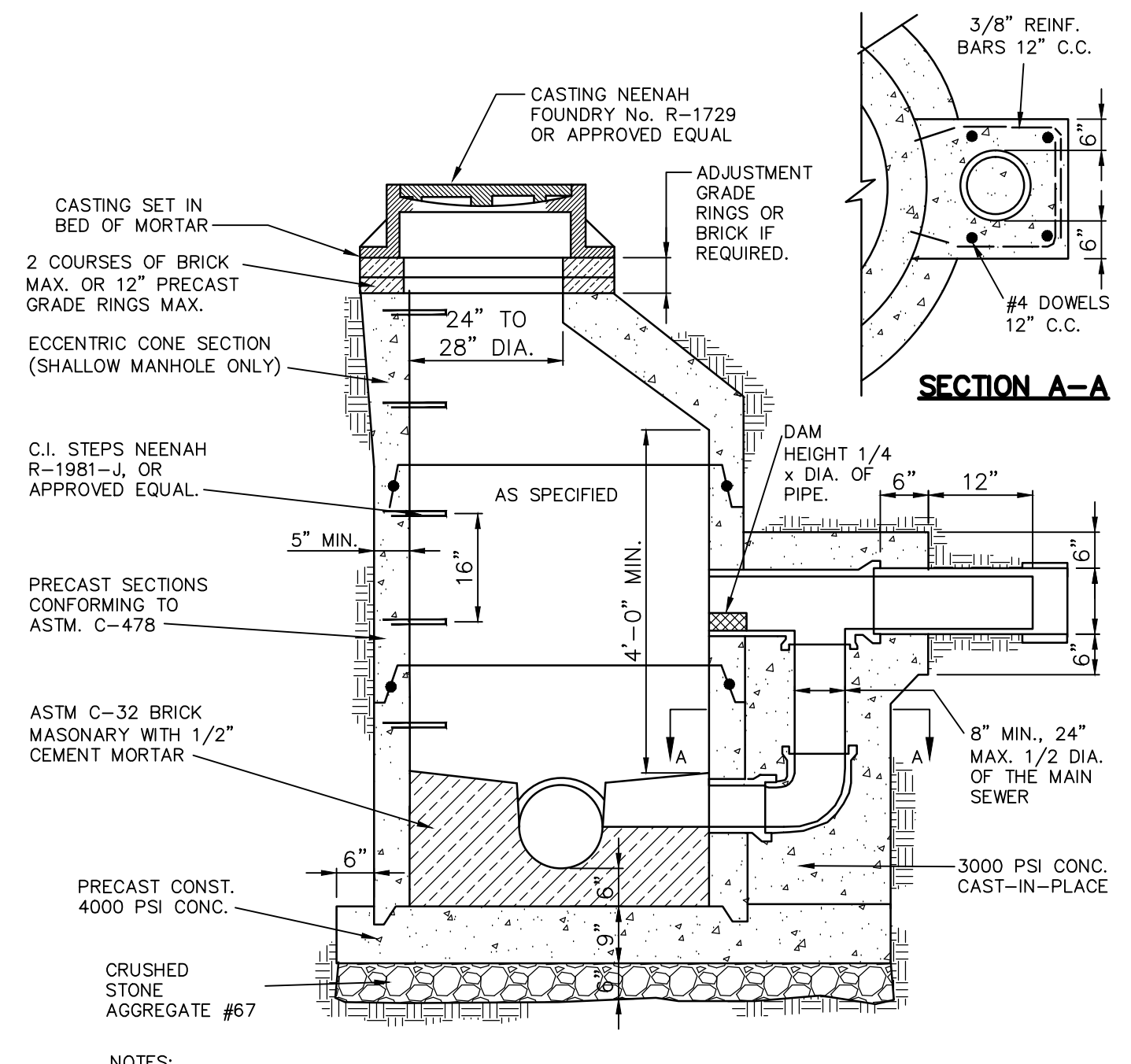
(c) WITHIN THE R/W BUT NOT UNDER PAVEMENT OR WITHIN THE 45 DEGREE INFLUENCE LINE - ANY BACKFILLING OF TRENCHES MUST BE COMPACTED TO AT LEAST 85% OF THE MATERIAL'S STANDARD PROCTOR MAXIMUM DRY DENSITY WITH THE MATERIAL'S MOISTURE CONTENT ADJUSTED TO WITHIN 2% OF THE OPTIMUM PRIOR TO COMPACTION.

(d) IN DEPTHS OVER 8 FEET AND WHEN COMPACTING WITH A HOE-PAC OR EQUAL HYDRAULIC COMPACTOR, A CONTRACTOR MAY INSTALL THE FIRST LIFT UP TO 3 FEET IN DEPTH BEFORE COMPACTING. SUBSEQUENT LIFTS SHALL BE COMPACTED AS PER THE ABOVE.

ADDITIONALLY, ODOT ITEM 611 AND ASTM D2321 MUST BE ADHERED TO. IF ANY CONFLICTING COMPACTION PERCENTAGES ARE FOUND TO EXIST BETWEEN THOSE INDICATED ABOVE AND ODOT SPECIFICATIONS, THE HIGHER COMPACTION PERCENTAGE SHALL GOVERN.

THESE REQUIREMENTS PERTAIN TO INSTALLATION OF ALL UTILITIES.

UTILITY OR UTILITY CONNECTION TRENCH
 N.T.S.



NOTES:

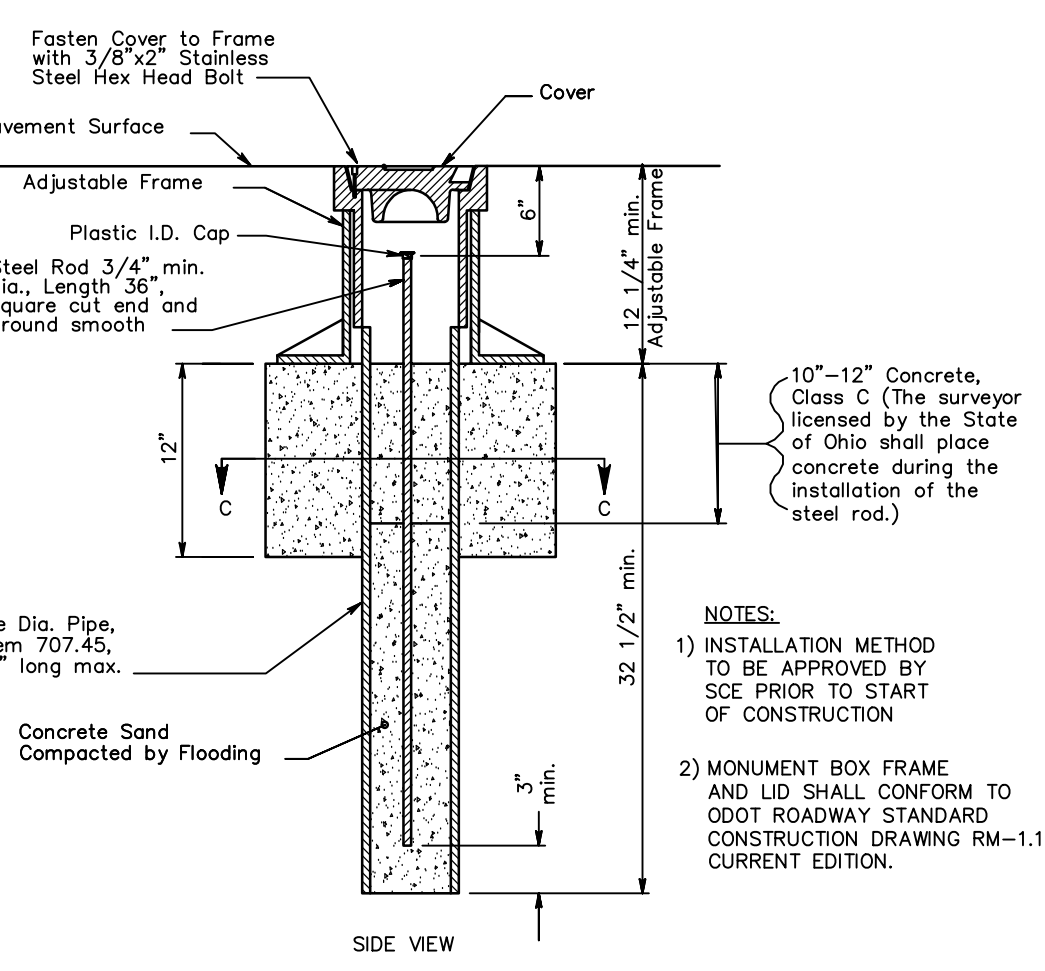
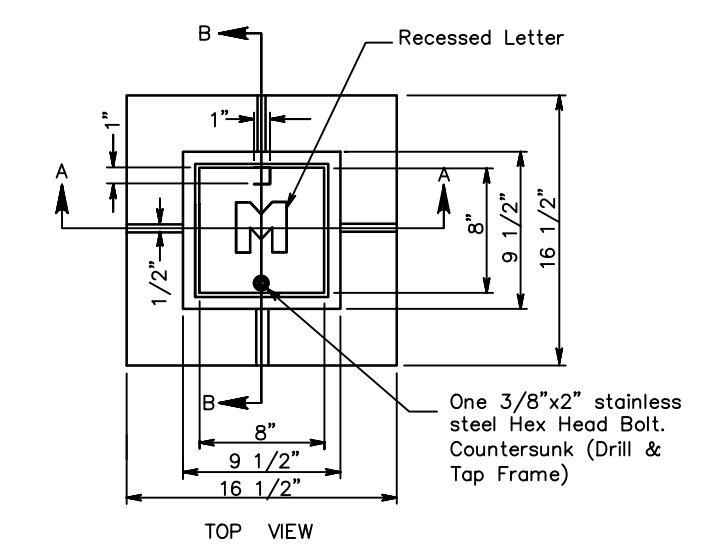
1. A DROP MANHOLE SHALL BE CONSTRUCTED IN SEWERS WHENEVER THE DISTANCE BETWEEN INVERTS IS 2.0' OR GREATER.

2. POURED IN PLACE CONCRETE SHALL BE 3000# CONCRETE.

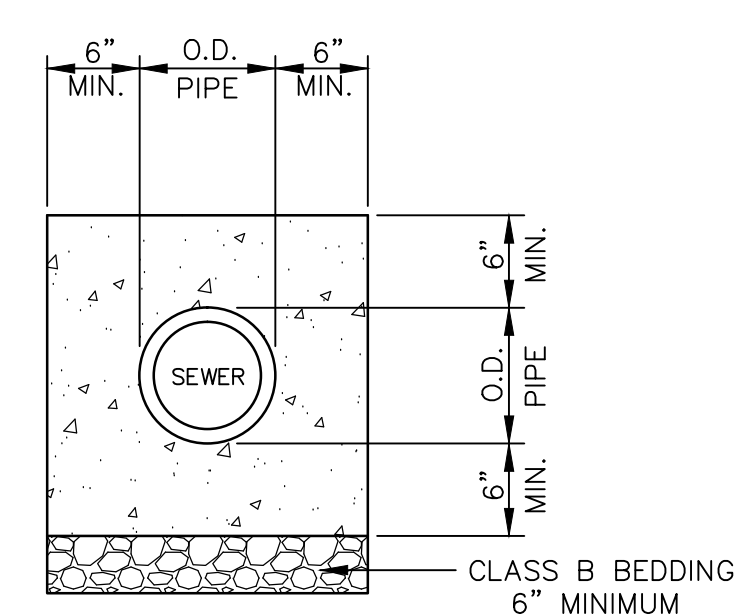
3. MANHOLE JOINTS MUST COMPLY WITH ASTM C443.

SANITARY DROP MANHOLE
 N.T.S.

REV.	DATE	DESCRIPTION
1	06/02/14	REVISED PER LOCAL AGENCY COMMENTS
2	06/27/14	REVISED PER LOCAL AGENCY COMMENTS
3	07/18/14	REVISED PER LOCAL AGENCY COMMENTS
4	07/25/14	REVISED PER LOCAL AGENCY COMMENTS
5	08/01/14	MILLER PARCEL UTILITY UPDATE
6	08/05/14	COMMENTS FOR GRADING APPROVAL
7	08/20/14	REVISED PER LOCAL AGENCY COMMENTS
8	08/22/14	SANITARY REVISION MH 300-302
9	09/12/14	REVISED PER LOCAL AGENCY COMMENTS



SCE ADJUSTABLE MONUMENT BOX
 N.T.S.



CONCRETE ANTI-SEEP COLLAR
 N.T.S.

THE PRESERVE AT MILLER'S FARM
 SE CORNER OF SR 18 AND MEDINA LINE RD
 COPLEY, OHIO 44321

DETAILS

ISSUED FOR:	
PERMIT	06-02-14
BID	06-02-14
CONSTRUCTION	09-16-14
RECORD	-
PROJECT MANAGER	DESIGNER
MAL	KB

JOB NO
2013258.00

75/81