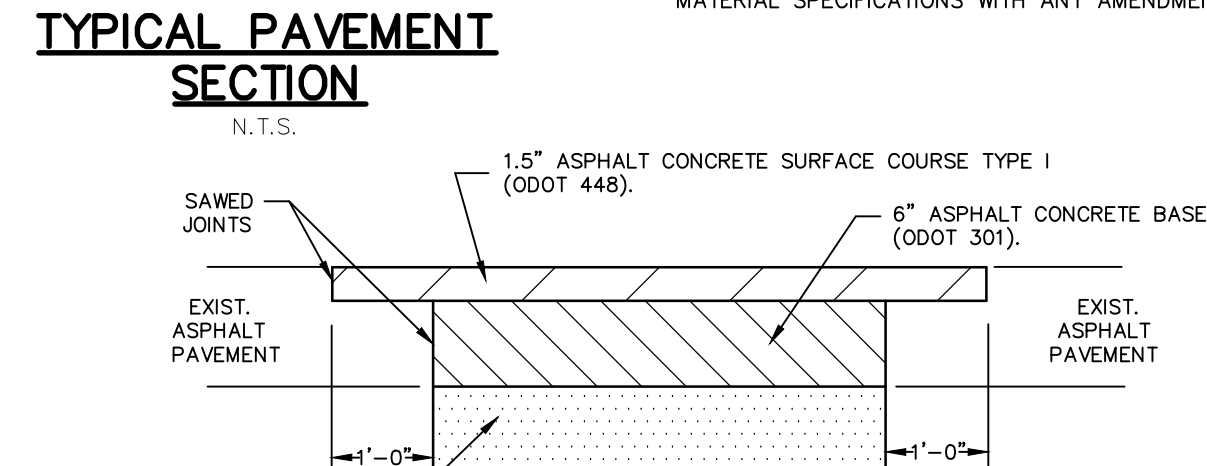
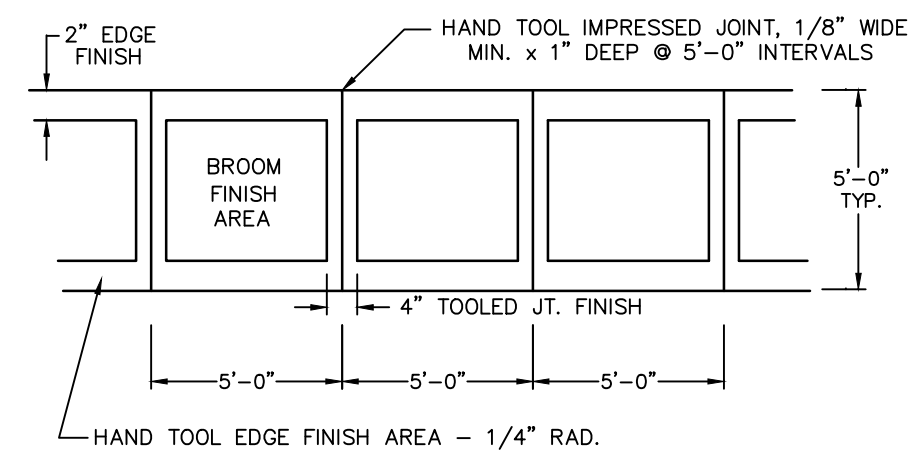
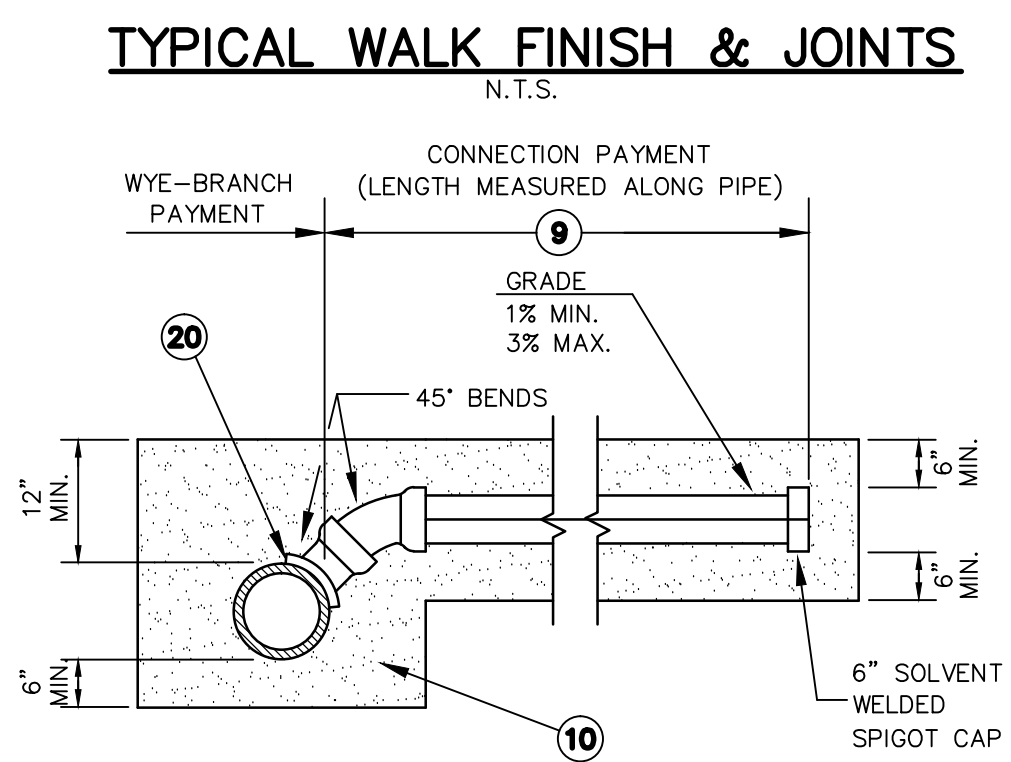


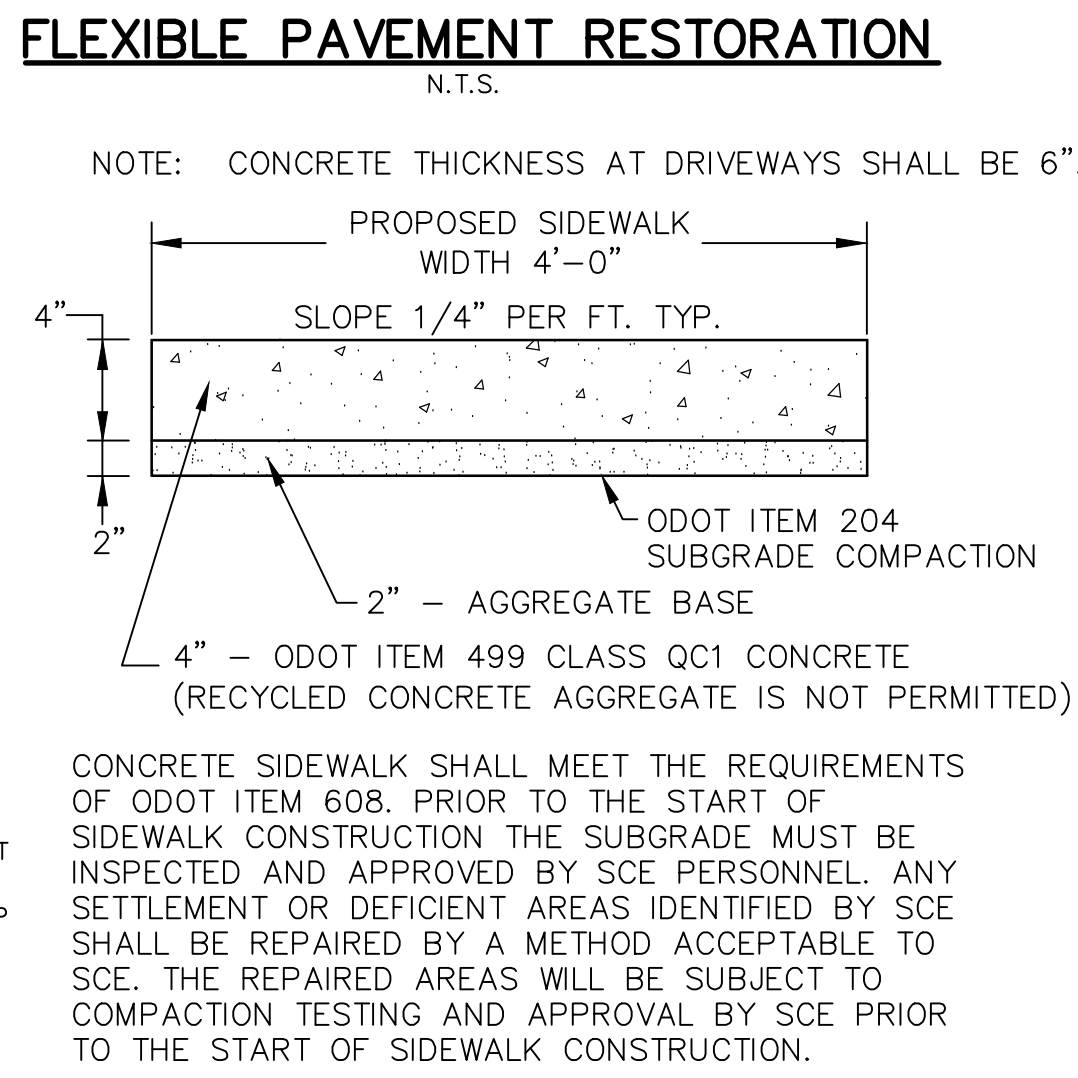
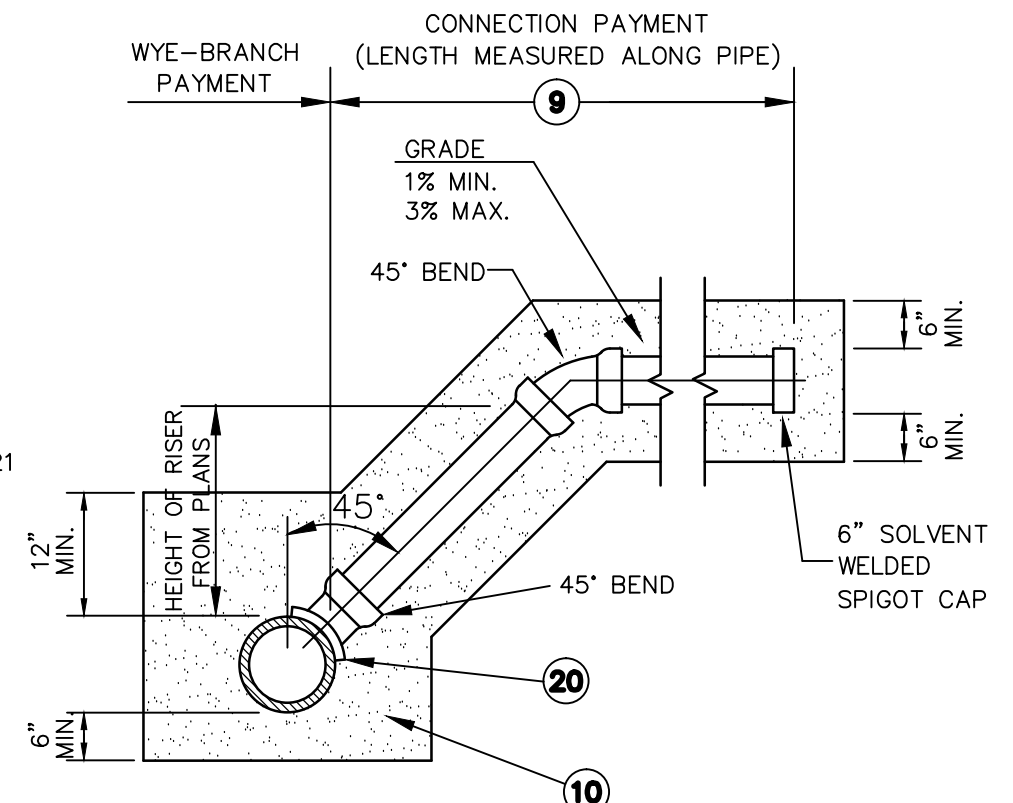
- Q.D.O.T. SPECIFICATION REFERENCE**
- ① ITEM 448 - 1-1/2" ASPHALT CONCRETE SURFACE COURSE, TYPE 1 PG 64-22.
  - ② ITEM 408 - PRIME COAT @ 0.40 GAL/SY
  - ③ ITEM 301 - 5" ASPHALT CONCRETE BASE
  - ④ ITEM 304 - 6" AGGREGATE BASE
  - ⑤ ITEM 605 - 4" DIA. PERFORATED UNDERDRAIN (SEE TYPE 3 CONCRETE CURB AND GUTTER DETAIL THIS SHEET)
  - ⑥ ITEM 609 - 2'-6" CONCRETE CURB & GUTTER TYPE 3
  - ⑦ ITEM 609 - 6" CONCRETE CURB, TYPE 6
  - ⑧ ITEM 653 - TOPSOIL FURNISHED & PLACED
  - ⑨ ITEM 659 - SEEDING AND MULCHING, CLASS 1
  - ⑩ ITEM 608 - CONCRETE WALK (SEE DETAIL THIS SHEET)
  - ⑪ ITEM 204 - SUBGRADE COMPACTION & PROOF ROLLING
  - ⑫ ITEM 407 - TACK COAT @ 0.075 GAL./S.Y.
- ASPHALT SHALL MEET CURRENT QDOT CONSTRUCTION & MATERIAL SPECIFICATIONS WITH ANY AMENDMENTS BY COSE.



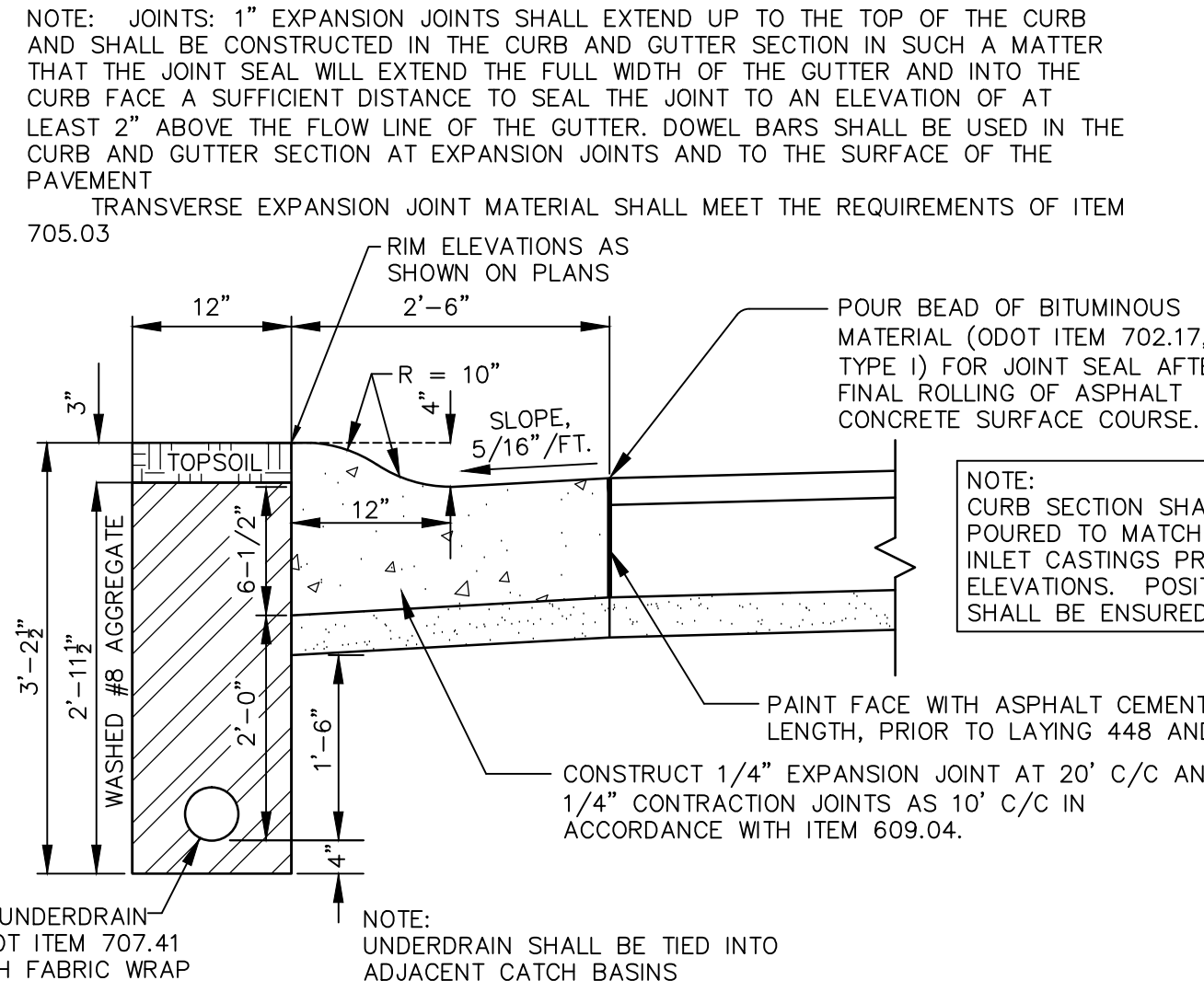
**PAVEMENT AND BERM RESTORATION**  
 PAVEMENT AND BERM THAT IS DISTURBED DURING CONSTRUCTION SHALL BE RESTORED PER THE PAVEMENT RESTORATION DETAIL.  
 PAYMENT FOR THIS WORK SHALL BE INCLUDED IN THE UNIT PRICE BID FOR ITEM 603 CONDUIT.  
**ROADWAY MATERIAL COMPOSITION**  
 ITEM 301 - 6" ASPHALT CONCRETE BASE  
 ITEM 304 - 6" AGGREGATE BASE  
 ITEM 448 - 1.5" ASPHALT CONCRETE SURFACE COURSE TYPE 1, PG 64-22



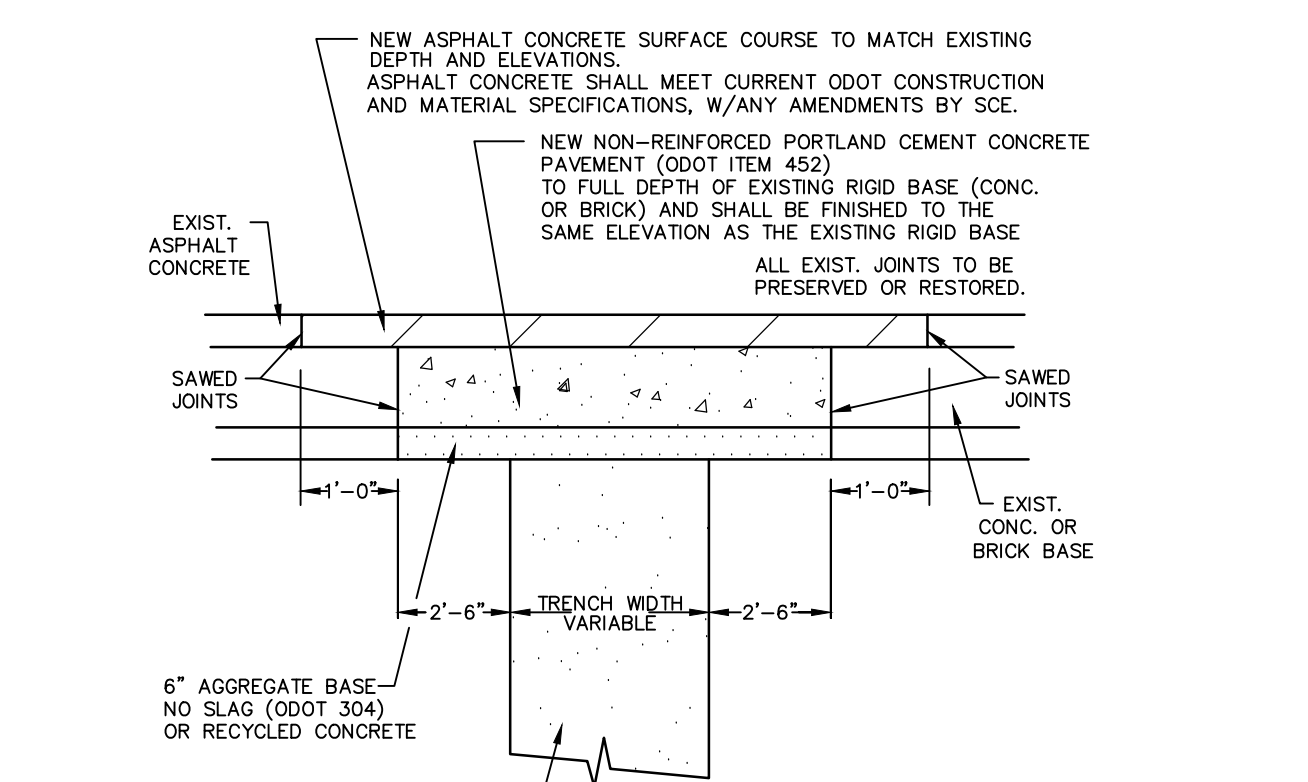
- LEGEND**
- ⑨ - 6" Dia. P.V.C. RISER OR CONNECTION
  - ⑩ - CRUSHED STONE AGGREGATE No. 67 THOROUGHLY COMPACTED (NO SLAG), INSTALLED PER ASTM D-2321
  - ⑫ - WYE BRANCH  
 A) P.V.C. SEWER: PREFORMED WYE BRANCH  
 B) R.C.P. SEWER: RUBBER BOOT OR CAST IRON SADDLE



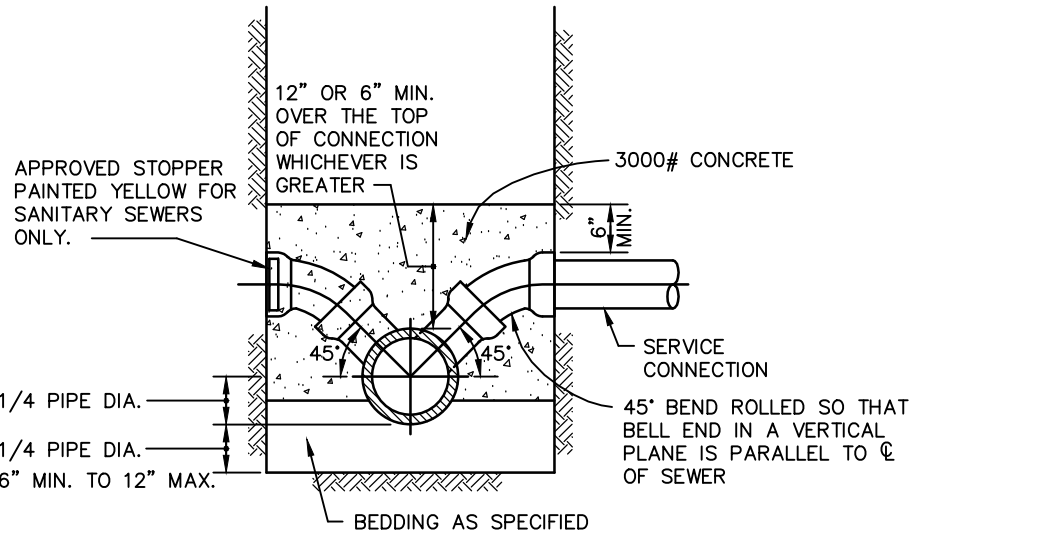
**4" CONCRETE WALK, AS PER PLAN**  
 N.T.S.



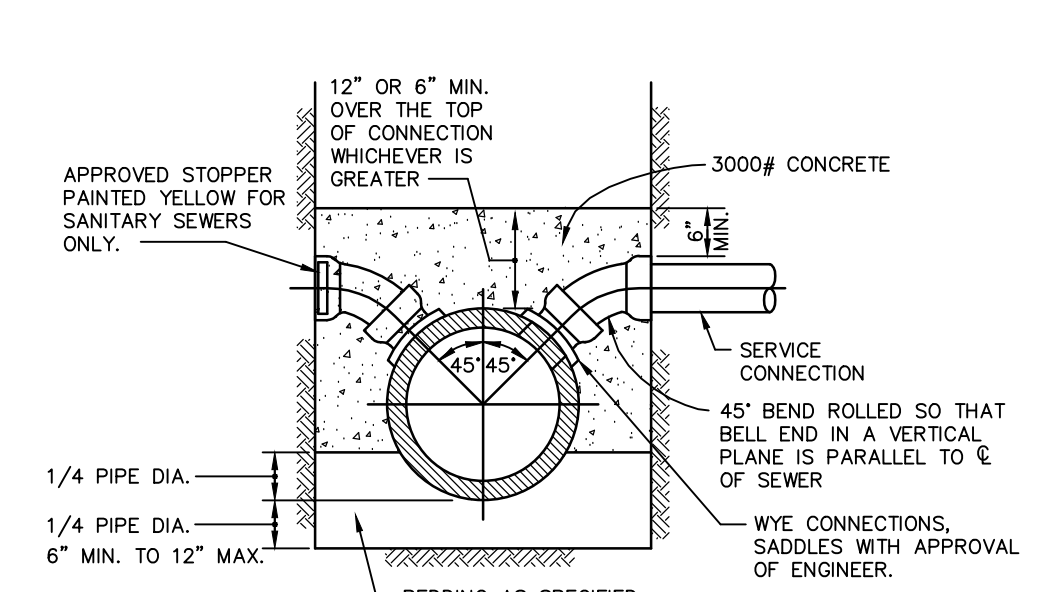
**COMBINATION CURB & GUTTER, TYPE 3, AS PER PLAN**  
 SCALE: N.T.S.



**PAVEMENT OPENING FOR RIGID PAVEMENT**  
 N.T.S.

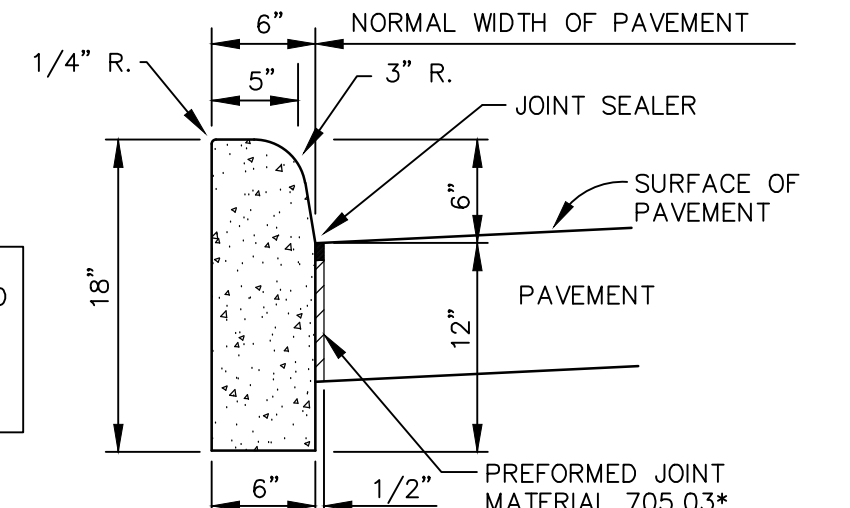


**TYPICAL Y-BRANCH DETAIL**



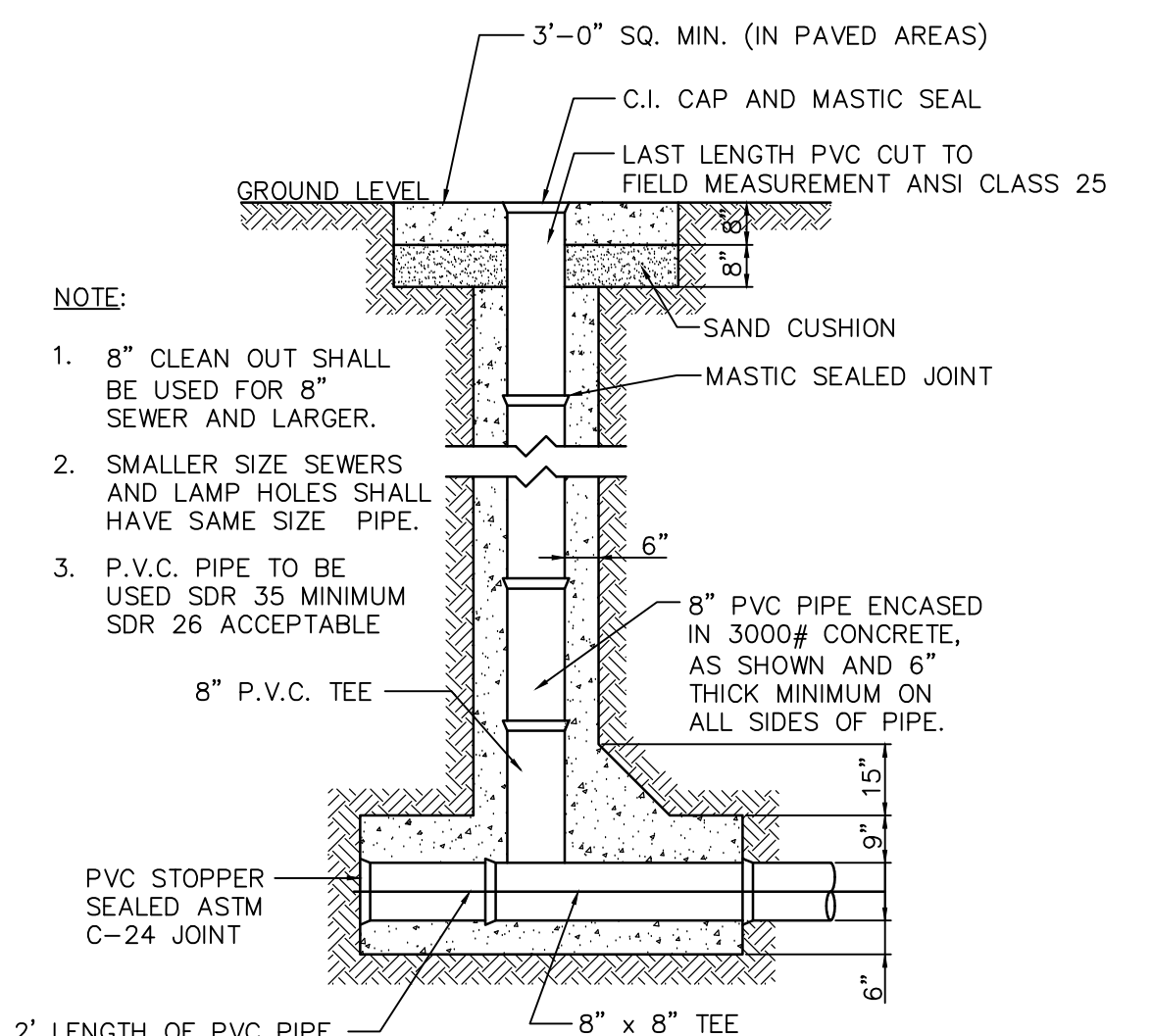
**TYPICAL SLANT DETAIL**

NOTE: JOINTS: 1" EXPANSION JOINTS SHALL EXTEND UP TO THE TOP OF THE CURB AND SHALL BE CONSTRUCTED IN THE CURB AND GUTTER SECTION IN SUCH A MANNER THAT THE JOINT SEAL WILL EXTEND THE FULL WIDTH OF THE GUTTER AND INTO THE CURB FACE A SUFFICIENT DISTANCE TO SEAL THE JOINT TO AN ELEVATION OF AT LEAST 2" ABOVE THE FLOW LINE OF THE GUTTER. DOWEL BARS SHALL BE USED IN THE CURB AND GUTTER SECTION AT EXPANSION JOINTS AND TO THE SURFACE OF THE PAVEMENT  
 TRANSVERSE EXPANSION JOINT MATERIAL SHALL MEET THE REQUIREMENTS OF ITEM 705.03

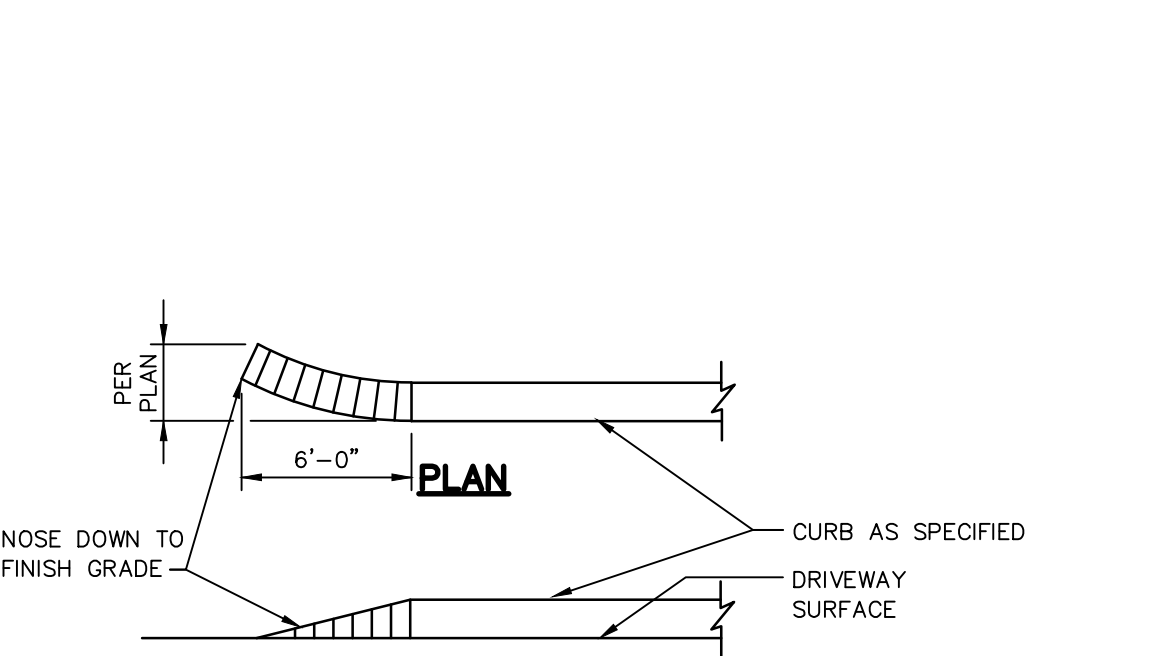


**CURB, TYPE 6**

\* EXPANSION JOINT MATERIAL AND JOINT SEALER IS NOT REQUIRED FOR THAT PORTION OF THE CURB WHICH IS ADJACENT TO A FLEXIBLE TYPE PAVEMENT. BOTH MATERIALS ARE REQUIRED AS DETAILED FOR THE FULL HEIGHT OF RIGID PAVEMENT AND CONCRETE BASES.

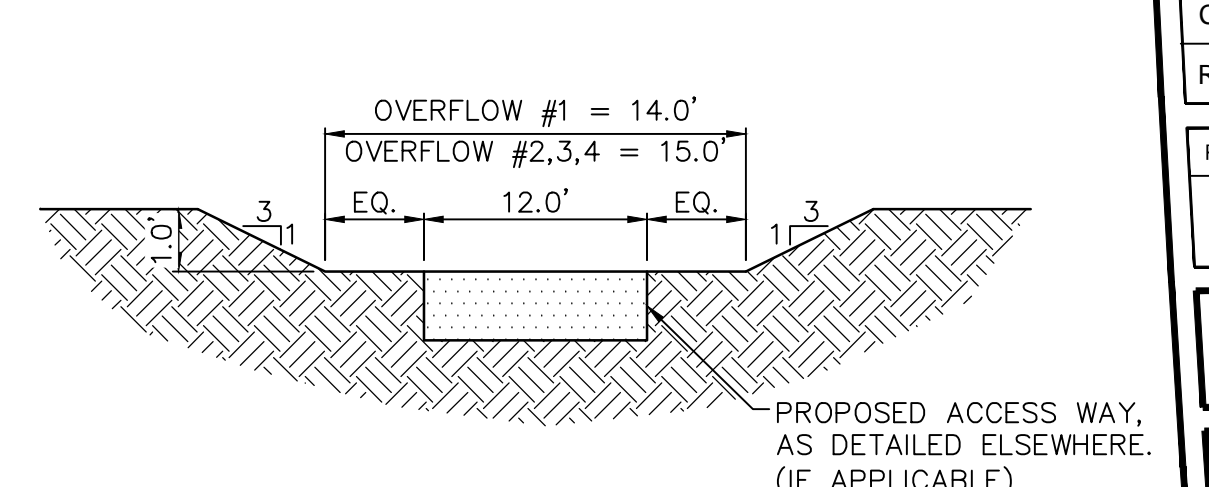


**TYPICAL STORM CLEANOUT DETAIL**  
 N.T.S.



**TYPICAL ELEVATION**

**CURB TAPER**  
 N.T.S.



**100 YEAR FLOW PATH**  
 N.T.S.

REV.	DATE	DESCRIPTION
1	06/02/14	REVISED PER LOCAL AGENCY COMMENTS
2	06/27/14	REVISED PER LOCAL AGENCY COMMENTS
3	07/18/14	REVISED PER LOCAL AGENCY COMMENTS
4	07/25/14	REVISED PER LOCAL AGENCY COMMENTS
5	08/01/14	MILLER PARCEL UTILITY UPDATE
6	08/05/14	COMMENTS FOR GRADING APPROVAL
7	08/20/14	REVISED PER LOCAL AGENCY COMMENTS
8	08/22/14	SANITARY REVISION MH 300-302
9	09/12/14	REVISED PER LOCAL AGENCY COMMENTS

THE PRESERVE AT MILLER'S FARM  
 SE CORNER OF SR 18 AND MEDINA LINE RD  
 COPLEY, OHIO 44321

**DETAILS**

ISSUED FOR:	
PERMIT	06-02-14
BID	06-02-14
CONSTRUCTION	09-16-14
RECORD	-

PROJECT MANAGER	DESIGNER
MAL	KB

JOB NO  
**2013258.00**

**74/81**