

WATER MAIN FITTING SCHEDULE		
ITEM	STATION	OFFSET
6" HYD. ASSEMBLY, TYPE B	20+02.51	0.00'
8" X 6" REDUCER	21+02.62	0.00'
8" 22.50° BEND	21+98.85	0.00'
8" 45° BEND	22+00.13	0.00'
8" 22.50° BEND	23+55.53	0.00'

STORM SEWER
 REFER TO GENERAL NOTES SHEET 5 FOR GENERAL NOTES.
 ALL RCP PIPE SHALL BE CLASS 4 PER ODOT 706.02
 ALL HDPE PIPE SHALL BE SMOOTH LINED PER ODOT 707.33
 ALL PVC PIPE SHALL BE SDR 35 PER ODOT 707.45

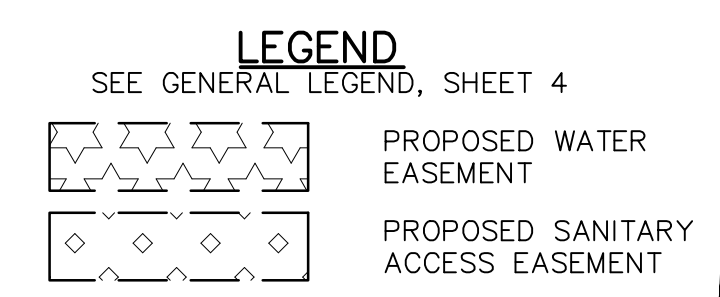
NOTE:
 ANY SERVICE LATERAL CROSSING WATER MAIN SHALL MAINTAIN 18" MINIMUM CLEARANCE.
 ALL WATER MAIN PIPE JOINTS WITHIN AREAS OF FILL MUST BE RESTRAINED.

NOTE:
 ALL OIL AND GAS WELL REMOVALS, PLUGGING/CAPPING, AND ABANDONMENTS SHALL BE IN ACCORDANCE WITH ALL ASSOCIATED REGULATIONS FOR SUCH REMOVALS, INCLUDING BUT NOT LIMITED TO, ODNR, LOCAL, STATE, AND FEDERAL.
 EXISTING HIGH PRESSURE GAS MAIN SHALL BE LOCATED AND PROTECTED PRIOR TO AND THROUGHOUT CONSTRUCTION.

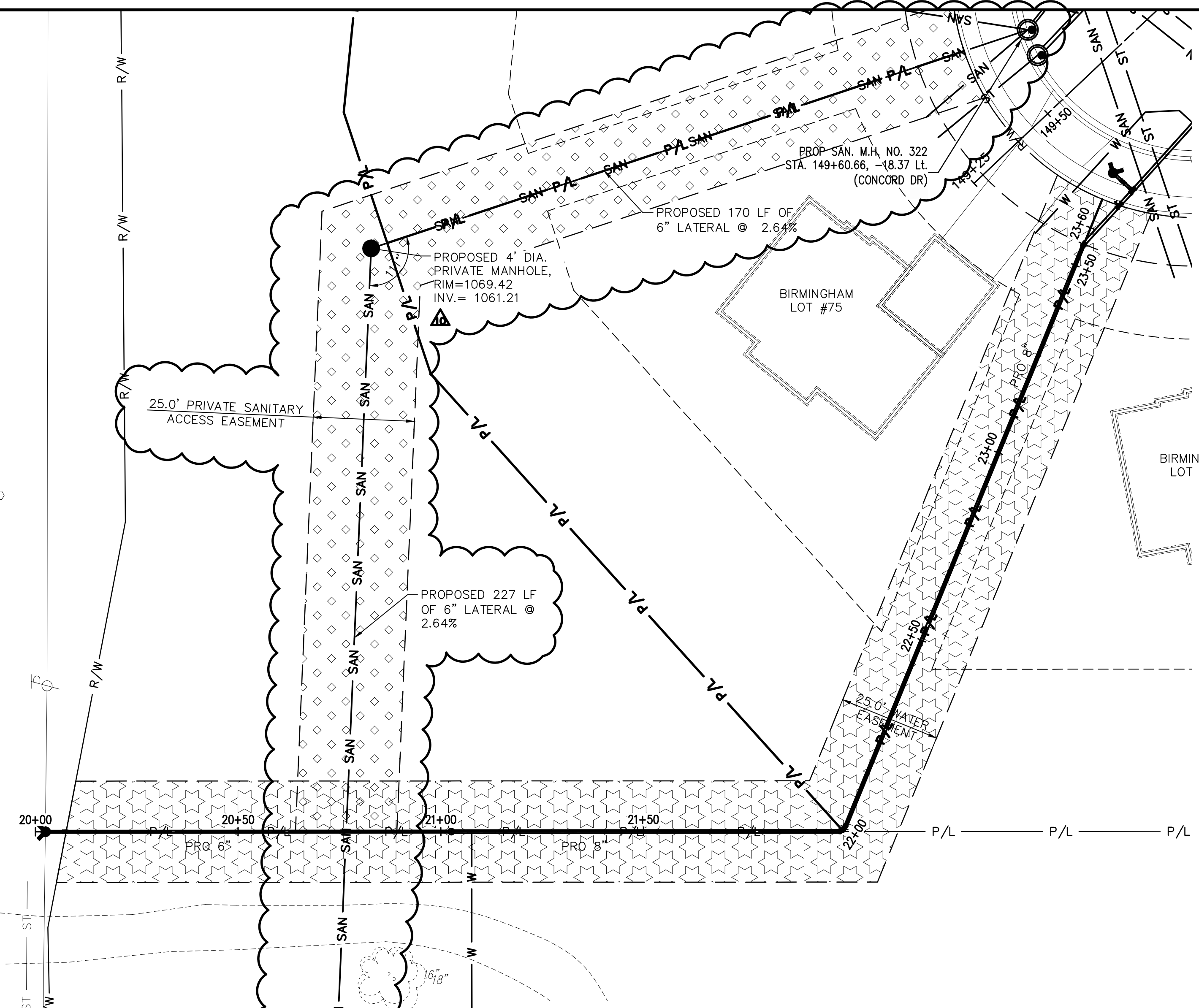
Underground Utilities

2 Working Days Before You Dig
 Call 800-362-2764 (Toll Free)
 Ohio Utilities Protection Service

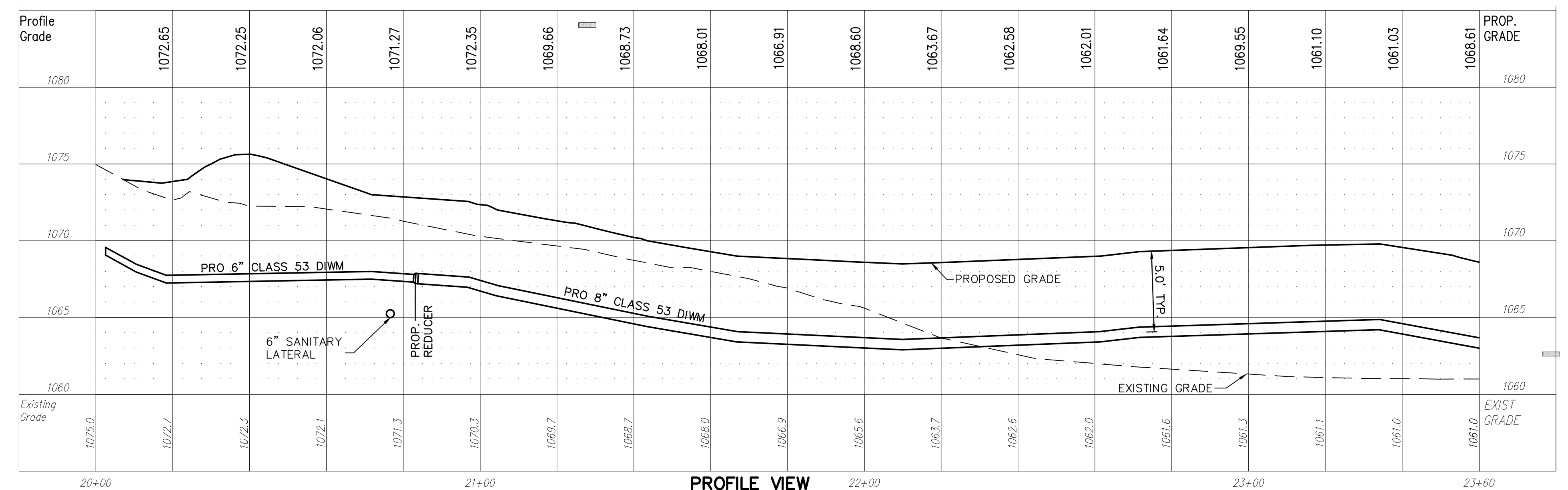
Non-members Must Be Called Directly
 Call 800-925-0988 (Toll Free)
 Oil & Gas Producers Utility Protection Service



SEE SHEET 52 FOR CONCORD DRIVE PLAN AND PROFILE



PLAN VIEW
 SCALE: 1"=20'



PROFILE VIEW
 HORIZONTAL SCALE: 1"=20'
 VERTICAL SCALE: 1"=5'

WATER MAIN CONNECTION SCHEDULE			
UNIT	CONNECTION AT MAIN	LATERAL TERMINATION	LENGTH
MILLER HOUSE	SAN 20+82.87, 143.92 LT.	20+73.09, 82.59 RT.	226.72
	WAT 21+07.62, 0.00	20+83.98, 87.08 RT.	96.57

REV.	DATE	DESCRIPTION
2	06/27/14	REVISED PER LOCAL AGENCY COMMENTS
3	07/18/14	REVISED PER LOCAL AGENCY COMMENTS
4	07/25/14	REVISED PER LOCAL AGENCY COMMENTS
5	08/01/14	MILLER PARCEL UTILITY UPDATE
6	08/05/14	COMMENTS FOR GRADING APPROVAL
7	08/20/14	REVISED PER LOCAL AGENCY COMMENTS
8	08/22/14	SANITARY REVISION MH 300-302
9	09/12/14	REVISED PER LOCAL AGENCY COMMENTS
10	10/15/14	SANITARY REVISION TO MILLER'S HOUSE

THE PRESERVE AT MILLER'S FARM
 SE CORNER OF SR 18 AND MEDINA LINE RD
 COPLEY, OHIO 44321

PLAN AND PROFILE
 UTILITY

ISSUED FOR:

PERMIT	06-02-14
BID	06-02-14
CONSTRUCTION	09-16-14
RECORD	-

PROJECT MANAGER	DESIGNER
MAL	KB

JOB NO.
2013258.00

64/81