

SEE SHEET 52 FOR CONCORD DRIVE PLAN AND PROFILE

WATER MAIN FITTING SCHEDULE		
ITEM	STATION	OFFSET
6" HYD. ASSEMBLY, TYPE B	20+02.51	0.00'
8" X 6" REDUCER	21+02.62	0.00'
8" 22.50° BEND	21+98.85	0.00'
8" 45° BEND	22+00.13	0.00'
8" 22.50° BEND	23+55.53	0.00'

**STORM SEWER**  
 REFER TO GENERAL NOTES SHEET 5 FOR GENERAL NOTES.  
 ALL RCP PIPE SHALL BE CLASS 4 PER ODOT 706.02  
 ALL HDPE PIPE SHALL BE SMOOTH LINED PER ODOT 707.33  
 ALL PVC PIPE SHALL BE SDR 35 PER ODOT 707.45

**Underground Utilities**

2 Working Days Before You Dig  
 Call 800-362-2764 (Toll Free)  
 Ohio Utilities Protection Service

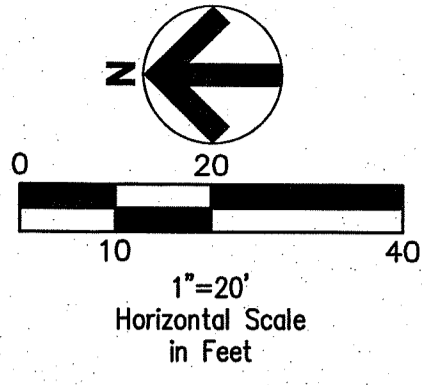
Non-members Must Be Called Directly  
 Call 800-925-0988 (Toll Free)  
 Oil & Gas Producers Utility Protection Service

**NOTE:**  
 ANY SERVICE LATERAL CROSSING WATER MAIN SHALL MAINTAIN 18" MINIMUM CLEARANCE.

ALL WATER MAIN PIPE JOINTS WITHIN AREAS OF FILL MUST BE RESTRAINED.

**NOTE:**  
 ALL OIL AND GAS WELL REMOVALS, PLUGGING/CAPPING, AND ABANDONMENTS SHALL BE IN ACCORDANCE WITH ALL ASSOCIATED REGULATIONS FOR SUCH REMOVALS, INCLUDING BUT NOT LIMITED TO, ODNR, LOCAL, STATE, AND FEDERAL.

EXISTING HIGH PRESSURE GAS MAIN SHALL BE LOCATED AND PROTECTED PRIOR TO AND THROUGHOUT CONSTRUCTION.



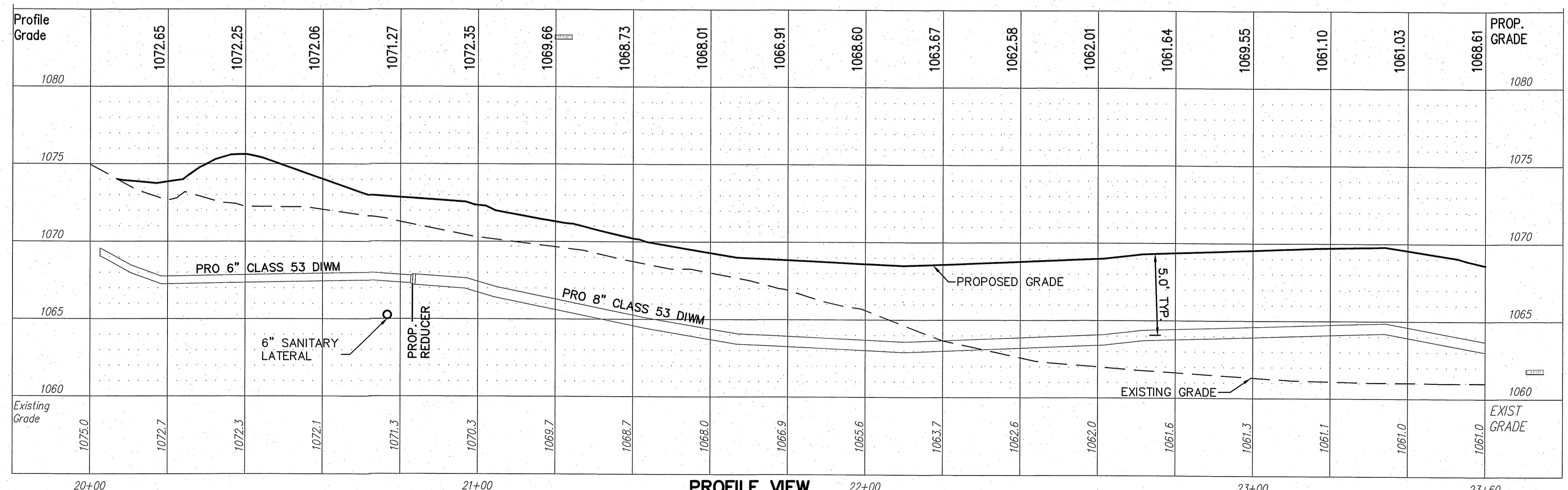
**LEGEND**  
 SEE GENERAL LEGEND, SHEET 4

PROPOSED WATER EASEMENT

PROPOSED SANITARY ACCESS EASEMENT

- AS-BUILT LEGEND**
- DESIGNED WATER VALVE
  - DESIGNED HYDRANT
  - ASBUILT ELECTRIC PULLBOX
  - ASBUILT WATER VALVE
  - ASBUILT HYDRANT
  - STORM ASBUILT LATERAL TERMINATION
  - SANITARY ASBUILT LATERAL TERMINATION
  - WATER ASBUILT LATERAL TERMINATION

**PLAN VIEW**  
 SCALE: 1"=20'



**PROFILE VIEW**  
 HORIZONTAL SCALE: 1"=20'  
 VERTICAL SCALE: 1"=5'

WATER MAIN CONNECTION SCHEDULE			
UNIT	CONNECTION AT MAIN	LATERAL TERMINATION	LENGTH
MILLER	SAN 20+82.87, 143.92 LT.	20+73.09, 82.99 RT.	228.72
HOUSE	WAT 21+07.62, 0.00	20+83.98, 87.08 RT.	86.47

REV.	DATE	DESCRIPTION
12/8/14		BRIDGE PLAN REVISIONS

THE PRESERVE AT MILLER'S FARM  
 SE CORNER OF SR 18 AND MEDINA LINE RD  
 COPLEY, OHIO 44321

**PLAN AND PROFILE UTILITY**

ISSUED FOR:	
PERMIT	06-02-14
BID	06-02-14
CONSTRUCTION	09-16-14
AS-BUILT	02-26-15

PROJECT MANAGER	DESIGNER
MAL	KB

JOB NO.  
**2013258.00**

**64/81**