

Underground Utilities

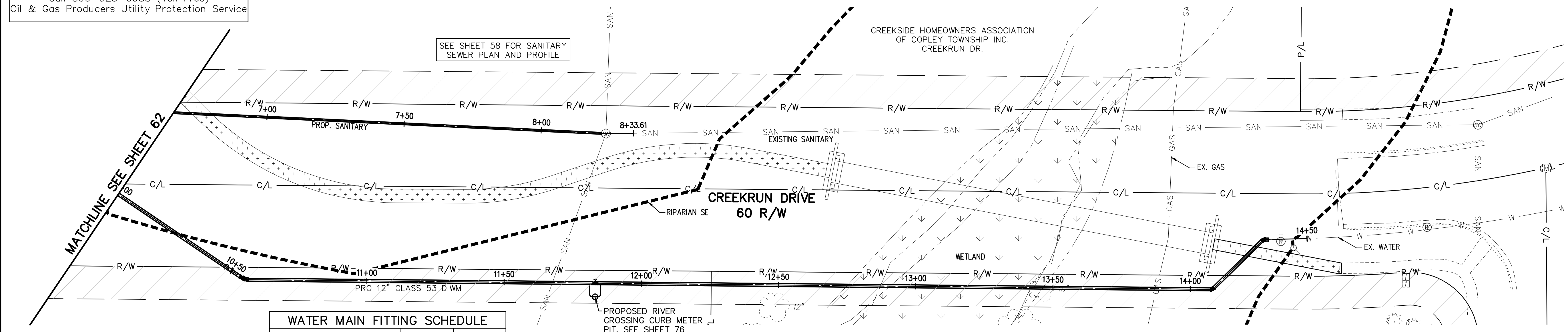
2 Working Days
 Before You Dig
 Call 800-362-2764 (Toll Free)
 Ohio Utilities Protection Service

Non-members
 Must Be Called Directly

Call 800-925-0988 (Toll Free)
 Oil & Gas Producers Utility Protection Service

STORM SEWER

REFER TO GENERAL NOTES SHEET 5 FOR GENERAL NOTES.
 ALL RCP PIPE SHALL BE CLASS 4 PER ODOT 706.02
 ALL HDPE PIPE SHALL BE SMOOTH LINED PER ODOT 707.33
 ALL PVC PIPE SHALL BE SDR 35 PER ODOT 707.45



WATER MAIN FITTING SCHEDULE

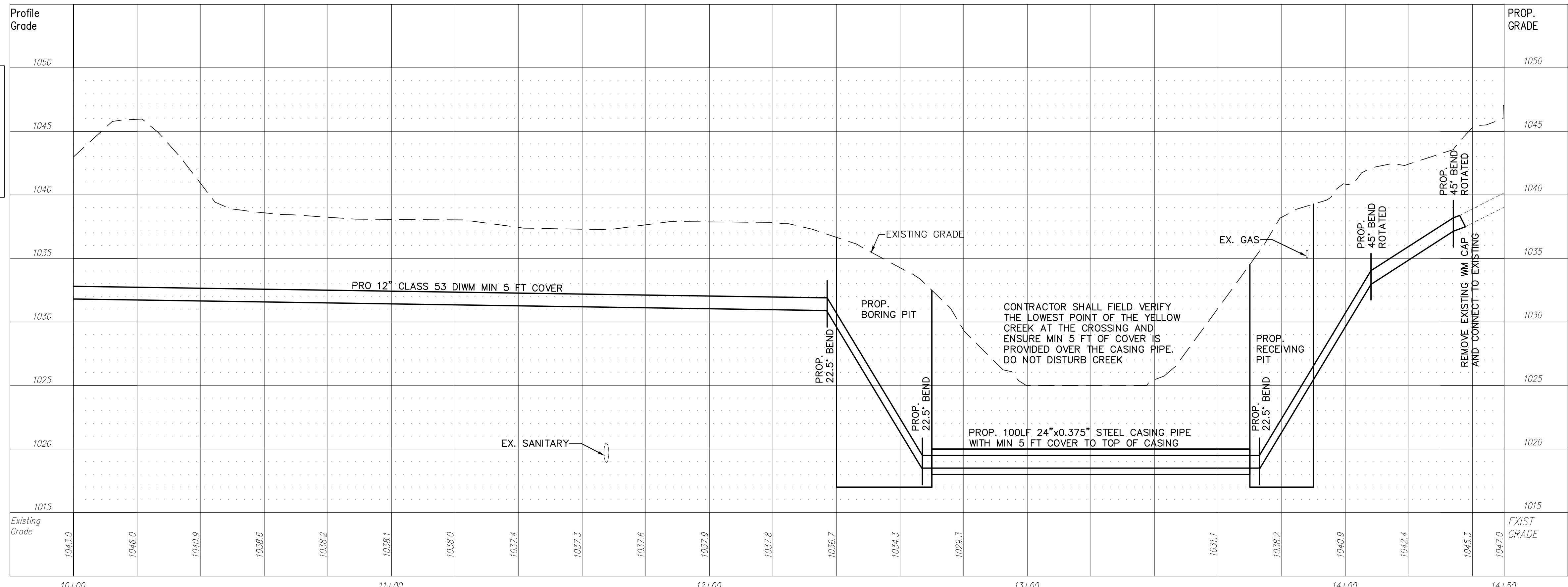
ITEM	STATION	OFFSET
11.25° BEND	10+54.16	0
22.50° BEND	10+56.15	0
1" TAP	11+81.21	0
RIVER CROSSING CURB METER PIT	11+83.21	5.00' RT.
12" LINE VALVE	11+83.21	0
1" TAP	11+85.21	0
45° BEND	14+08.18	0
45° BEND	14+34.00	0

NOTE:
 ANY SERVICE LATERAL CROSSING
 WATER MAIN SHALL MAINTAIN 18"
 MINIMUM CLEARANCE.

ALL WATER MAIN PIPE JOINTS
 WITHIN AREAS OF FILL MUST
 BE RESTRAINED.

NOTE:
 ALL OIL AND GAS WELL REMOVALS,
 PLUGGING/CAPPING, AND ABANDONMENTS
 SHALL BE IN ACCORDANCE WITH ALL
 ASSOCIATED REGULATIONS FOR SUCH
 REMOVALS, INCLUDING BUT NOT LIMITED TO,
 ODNR, LOCAL, STATE, AND FEDERAL.

EXISTING HIGH PRESSURE GAS MAIN SHALL BE
 LOCATED AND PROTECTED PRIOR TO AND
 THROUGHOUT CONSTRUCTION.



PROFILE VIEW
 HORIZONTAL SCALE: 1"=20'
 VERTICAL SCALE: 1"=5'

REV.	DATE	DESCRIPTION
1	06/02/14	REVISED PER LOCAL AGENCY COMMENTS
2	06/27/14	REVISED PER LOCAL AGENCY COMMENTS
3	07/18/14	REVISED PER LOCAL AGENCY COMMENTS
4	07/25/14	REVISED PER LOCAL AGENCY COMMENTS
5	08/01/14	MILLER PARCEL UTILITY UPDATE
6	08/05/14	COMMENTS FOR GRADING APPROVAL
7	08/20/14	REVISED PER LOCAL AGENCY COMMENTS
8	08/22/14	SANITARY REVISION MH 300-302
9	09/12/14	REVISED PER LOCAL AGENCY COMMENTS

THE PRESERVE AT MILLER'S FARM
 SE CORNER OF SR 18 AND MEDINA LINE RD
 COPLEY, OHIO 44321

**PLAN AND PROFILE
 UTILITY**

ISSUED FOR:

PERMIT	06-02-14
BID	06-02-14
CONSTRUCTION	09-16-14
RECORD	-

PROJECT MANAGER	DESIGNER
MAL	KB

JOB NO
2013258.00

63/81