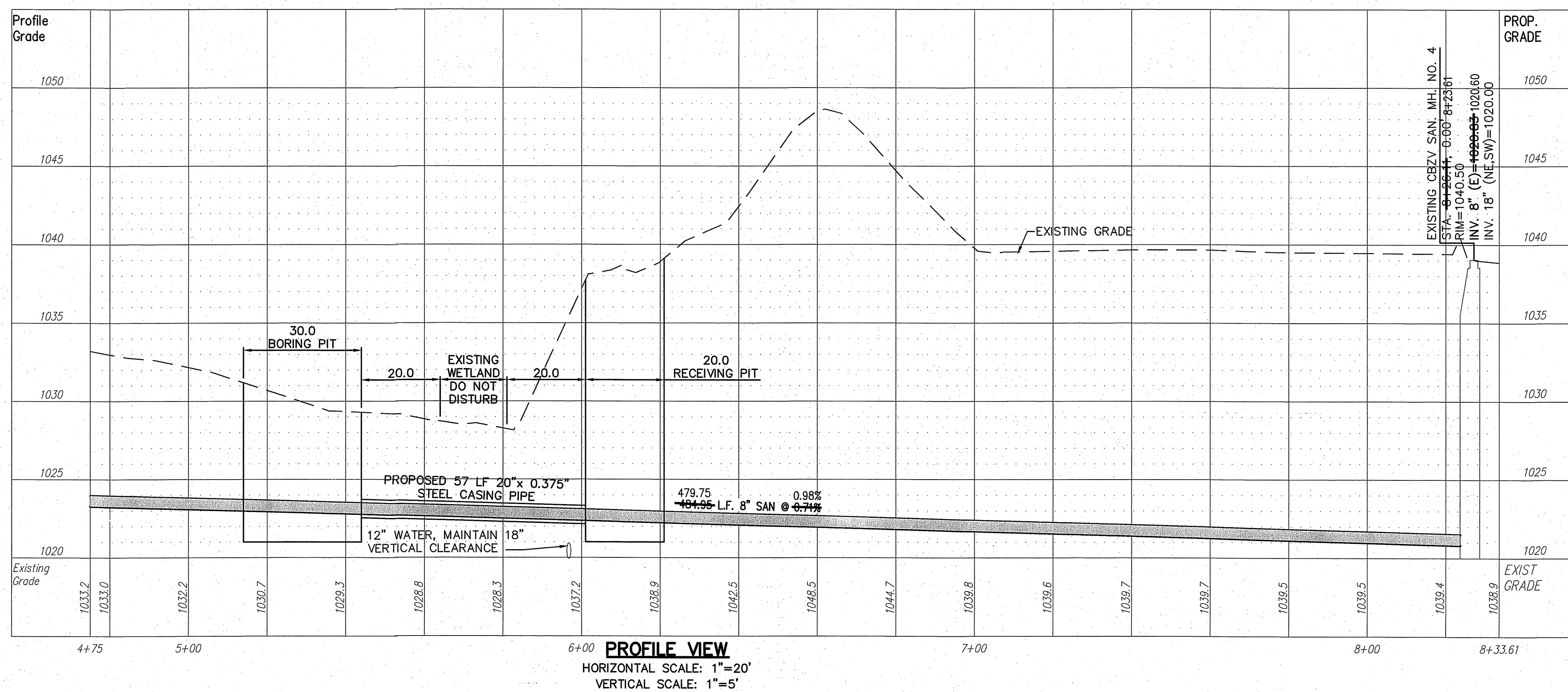


LEGEND
 SEE GENERAL LEGEND, SHEET 4

	PROPOSED DRAINAGE ACCESS EASEMENT
	PROPOSED DRAINAGE ACCESS EASEMENT
	PROPOSED WATER EASEMENT

REV	DATE	DESCRIPTION
1	12/8/14	BRIDGE PLAN REVISIONS

SEE D.O.E.S. SHEET NO. 14169



NOTE:
 ANY SERVICE LATERAL CROSSING WATER MAIN SHALL MAINTAIN 18" MINIMUM CLEARANCE.

ALL WATER MAIN PIPE JOINTS WITHIN AREAS OF FILL MUST BE RESTRAINED.

STORM SEWER
 REFER TO GENERAL NOTES SHEET 5 FOR GENERAL NOTES.
 ALL RCP PIPE SHALL BE CLASS 4 PER ODOT 706.02
 ALL HDPE PIPE SHALL BE SMOOTH LINED PER ODOT 707.33
 ALL PVC PIPE SHALL BE SDR 35 PER ODOT 707.45

Underground Utilities

2 Working Days Before You Dig
 Call 800-362-2764 (Toll Free)
 Ohio Utilities Protection Service

Non-members Must Be Called Directly
 Call 800-925-0988 (Toll Free)
 Oil & Gas Producers Utility Protection Service

NOTE:
 ALL OIL AND GAS WELL REMOVALS, PLUGGING/CAPPING, AND ABANDONMENTS SHALL BE IN ACCORDANCE WITH ALL ASSOCIATED REGULATIONS FOR SUCH REMOVALS, INCLUDING BUT NOT LIMITED TO, ODNR, LOCAL, STATE, AND FEDERAL.
 EXISTING HIGH PRESSURE GAS MAIN SHALL BE LOCATED AND PROTECTED PRIOR TO AND THROUGHOUT CONSTRUCTION.

THE PRESERVE AT MILLER'S FARM
 SE CORNER OF SR 18 AND MEDINA LINE RD
 COPLEY, OHIO 44321

PLAN AND PROFILE
 UTILITY

ISSUED FOR:	
PERMIT	06-02-14
BID	06-02-14
CONSTRUCTION	09-16-14
AS-BUILT	02-26-15

PROJECT MANAGER	DESIGNER
MAL	KB

JOB NO.
2013258.00

58/81