

PROPOSED STRUCTURE TABLE	
Structure Name	Structure Details
CB-D	ODOT CB No. 3A STA. 120+29.89, 13.00 Rt. RIM = 1063.63 12" PVC INV (NW)=1059.35 12" PVC INV (SE)=1059.35
CB-E	ODOT CB No. 3A STA. 120+30.08, -13.00 Lt. RIM = 1063.62 12" PVC INV (SE)=1059.61
CB-F	ODOT CB No. 3A STA. 118+59.97, 13.00 Rt. RIM = 1066.87 12" PVC INV (NW)=1062.60 12" PVC INV (SE)=1062.60
CB-G	ODOT CB No. 3A STA. 118+59.93, -13.00 Lt. RIM = 1066.87 12" PVC INV (SE)=1062.86

HARVESTER DRIVE WATER MAIN FITTING SCHEDULE		
ITEM	STATION	OFFSET
12" x 8" TEE	118+80.73	20.50' LT.
12" LINE VALVE	119+38.11	20.41' LT.
6" HYD. ASSEMBLY, TYPE B	119+40.03	18.00' LT.
11.25" BEND	120+88.83	21.22' LT.
11.25" BEND	121+59.24	20.45' LT.

Underground Utilities

2 Working Days Before You Dig
 Call 800-362-2764 (Toll Free)
 Ohio Utilities Protection Service

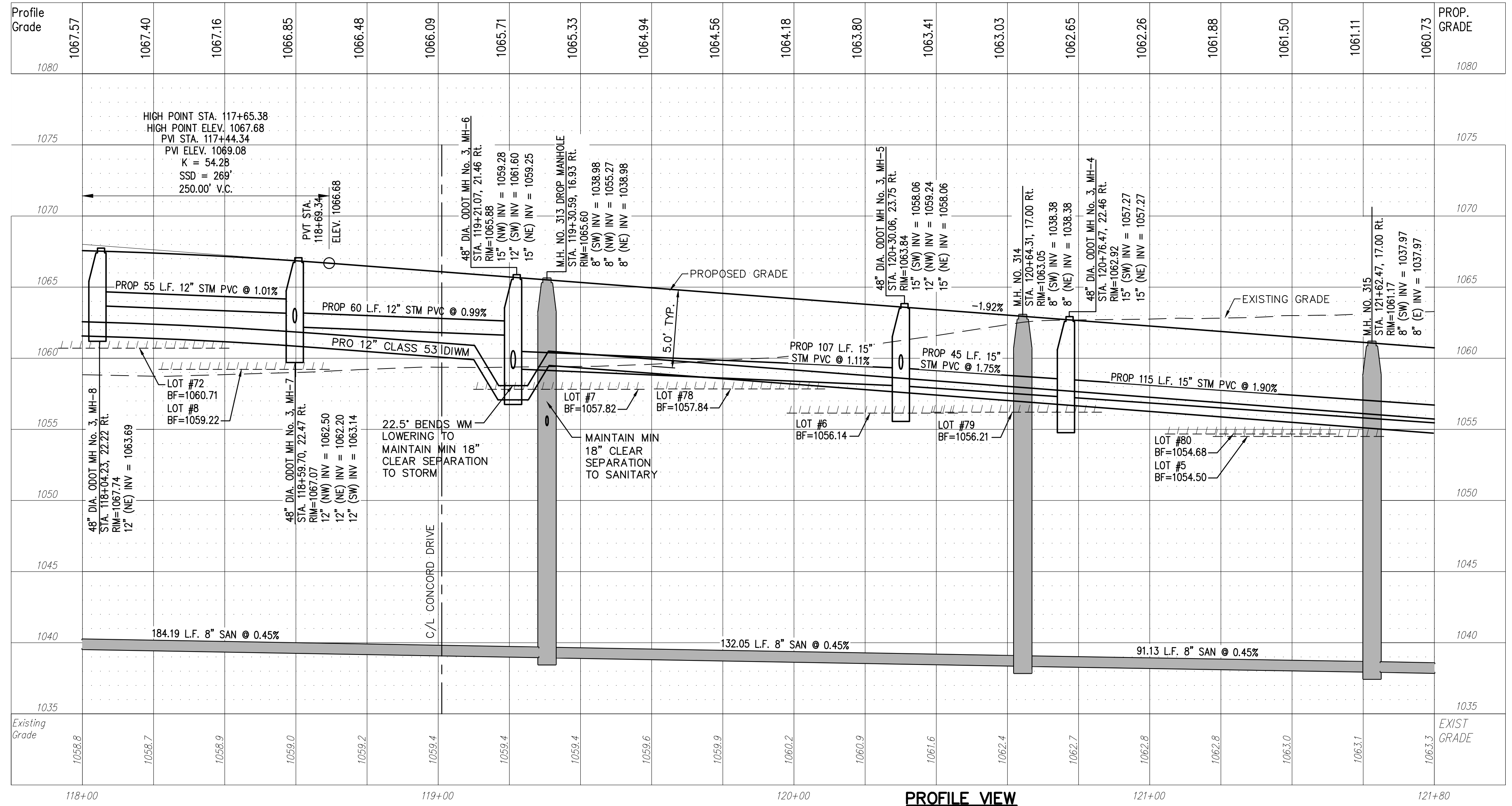
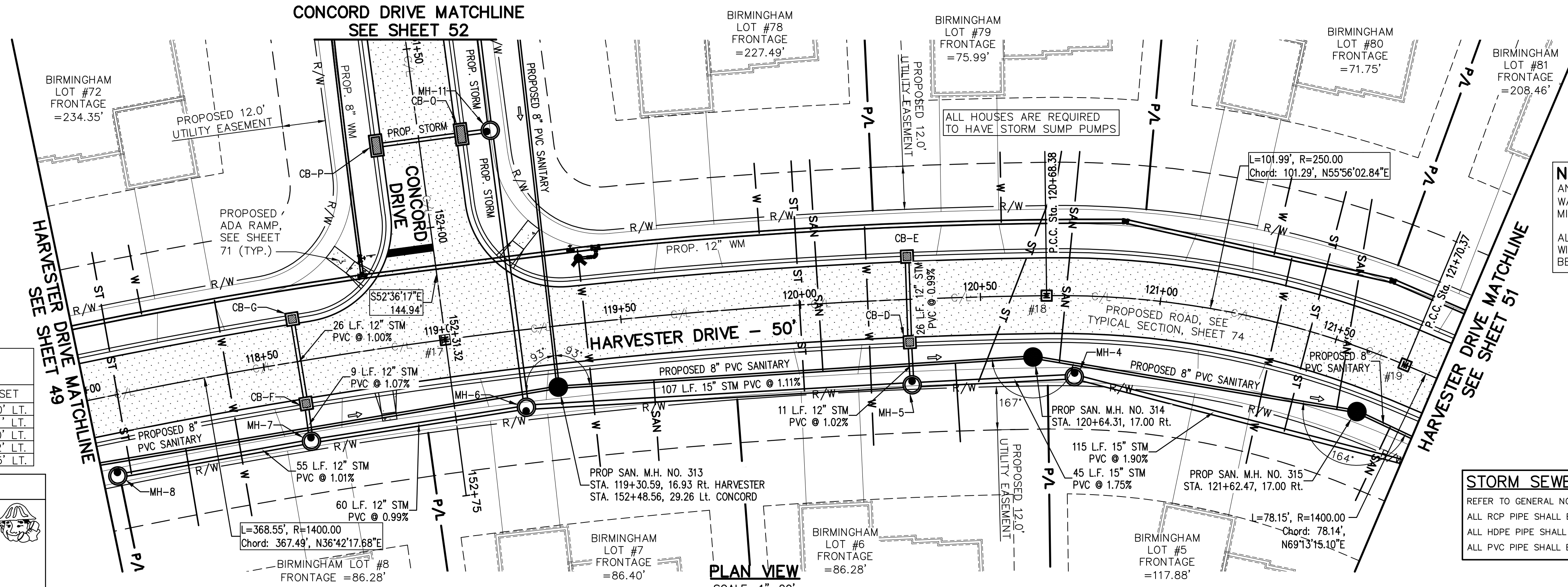
Non-members Must Be Called Directly

Call 800-925-0988 (Toll Free)
 Oil & Gas Producers Utility Protection Service

LEGEND
 SEE GENERAL LEGEND, SHEET 4

- PROPOSED ROLLED CURB AND GUTTER
- PROPOSED WALK
- PROPOSED WALK BY OTHERS
- PROPOSED WATER LATERAL
- PROPOSED SANITARY LATERAL
- PROPOSED STORM LATERAL
- PROPOSED WATER MAIN
- PROPOSED SANITARY MAIN
- PROPOSED STORM MAIN
- PROPOSED C/L OF CONSTRUCTION
- PROPOSED C/L OF RIGHT OF WAY
- PROPOSED MONUMENT BOX
- PROPOSED BOTTOM OF FOOTER ELEVATION
- PROPOSED ASPHALT PAVEMENT

HARVESTER DRIVE CONNECTION SCHEDULE			
UNIT	CONNECTION AT MAIN	LATERAL TERMINATION	LENGTH
72	ST 118+08.15, 22.31' RT.	118+09.46, 40.00' LT.	62.32
	WAT 118+19.49, 20.64' LT.	118+19.50, 40.00' LT.	19.36
	SAN 118+24.47, 18.68' RT.	118+24.01, 40.00' RT.	21.32
8	ST 118+39.76, 20.61' LT.	118+39.48, 40.00' RT.	60.61
	WAT 119+57.53, 17.96' RT.	119+56.87, 40.00' RT.	22.05
	SAN 119+57.53, 17.96' RT.	119+56.87, 40.00' RT.	22.05
7	ST 119+40.03, 20.45' LT.	119+40.05, 40.00' RT.	60.45
	WAT 120+05.15, 18.53' RT.	120+04.87, 40.00' LT.	58.53
	SAN 119+99.61, 23.95' RT.	119+99.87, 40.00' LT.	63.95
78	WAT 119+89.94, 20.61' LT.	119+89.88, 40.00' LT.	19.40
	SAN 120+42.47, 18.18' RT.	120+43.18, 40.00' RT.	21.83
	ST 120+18.81, 20.62' LT.	120+18.40, 40.00' RT.	60.62
79	SAN 120+71.97, 18.32' RT.	120+76.76, 40.00' LT.	58.53
	ST 120+48.88, 23.44' RT.	120+72.40, 40.00' LT.	68.00
	WAT 120+56.22, 20.59' LT.	120+56.32, 40.00' LT.	19.41
80	SAN 121+56.55, 18.03' RT.	121+47.84, 40.00' LT.	58.73
	ST 121+43.39, 28.55' RT.	121+41.42, 40.00' LT.	68.58
	WAT 121+27.94, 18.17' LT.	121+27.94, 40.00' LT.	21.83
5	SAN 121+73.24, 17.58' RT.	121+72.22, 40.00' RT.	22.44
	ST 121+32.60, 18.24' LT.	121+34.30, 40.00' RT.	58.26
	WAT 121+32.60, 18.24' LT.	121+34.30, 40.00' RT.	58.26



NOTE:
 ANY SERVICE LATERAL CROSSING WATER MAIN SHALL MAINTAIN 18" MINIMUM CLEARANCE.
 ALL WATER MAIN PIPE JOINTS WITHIN AREAS OF FILL MUST BE RESTRAINED.

HARVESTER DR. MONUMENT BOX SCHEDULE		
#	STATION	OFFSET
17	119+00.97	0.00'
18	120+68.38	0.00'
19	121+70.37	0.00'

STATION AND OFFSET TAKEN FROM CONSTRUCTION C/L

STORM SEWER
 REFER TO GENERAL NOTES SHEET 5 FOR GENERAL NOTES.
 ALL RCP PIPE SHALL BE CLASS 4 PER ODOT 706.02
 ALL HDPE PIPE SHALL BE SMOOTH LINED PER ODOT 707.33
 ALL PVC PIPE SHALL BE SDR 35 PER ODOT 707.45

REV.	DATE	DESCRIPTION
1	06/02/14	REVISED PER LOCAL AGENCY COMMENTS
2	06/27/14	REVISED PER LOCAL AGENCY COMMENTS
3	07/18/14	REVISED PER LOCAL AGENCY COMMENTS
4	07/25/14	REVISED PER LOCAL AGENCY COMMENTS
5	08/01/14	MILLER PARCEL UTILITY UPDATE
6	08/05/14	COMMENTS FOR GRADING APPROVAL
7	08/20/14	REVISED PER LOCAL AGENCY COMMENTS
8	08/22/14	SANITARY REVISION MH 300-302
9	09/12/14	REVISED PER LOCAL AGENCY COMMENTS

THE PRESERVE AT MILLER'S FARM
 SE CORNER OF SR 18 AND MEDINA LINE RD
 COPLEY, OHIO 44321

PLAN AND PROFILE
HARVESTER DRIVE

ISSUED FOR:	
PERMIT	06-02-14
BID	06-02-14
CONSTRUCTION	09-16-14
RECORD	-

PROJECT MANAGER	DESIGNER
MAL	KB

JOB NO.
2013258.00

50/81