

PROPOSED STRUCTURE TABLE		
Structure Name	Structure Details	
CB-D	ODOT CB No. 3A STA. 120+30.25, 120+30.25 RIM = 1063.63 1063.56 12" PVC INV (NW)=1059.74 12" PVC INV (SE)=1059.74	
CB-E	ODOT CB No. 3A STA. 120+29.77, 120+29.77 RIM = 1063.62 1063.60 12" PVC INV (SE)=1059.61	
CB-F	ODOT CB No. 3A STA. 118+60.05, 118+60.05 RIM = 1066.87 1066.84 12" PVC INV (NW)=1062.60 12" PVC INV (SE)=1062.60	
CB-G	ODOT CB No. 3A STA. 118+60.30, 118+60.30 RIM = 1066.87 1066.73 12" PVC INV (SE)=1062.60	

HARVESTER DRIVE WATER MAIN FITTING SCHEDULE		
ITEM	STATION	OFFSET
12" x 8" TEE	118+80.73	20.50' LT.
12" LINE VALVE	119+38.11	20.41' LT.
6" HYD. ASSEMBLY, TYPE B	119+40.93	18.00' LT.
11.25" BEND	120+88.83	21.22' LT.
11.25" BEND	121+59.24	20.45' LT.

Underground Utilities

2 Working Days Before You Dig
Call 800-362-2764 (Toll Free)
Ohio Utilities Protection Service

Non-members Must Be Called Directly

Call 800-925-0988 (Toll Free)
Oil & Gas Producers Utility Protection Service

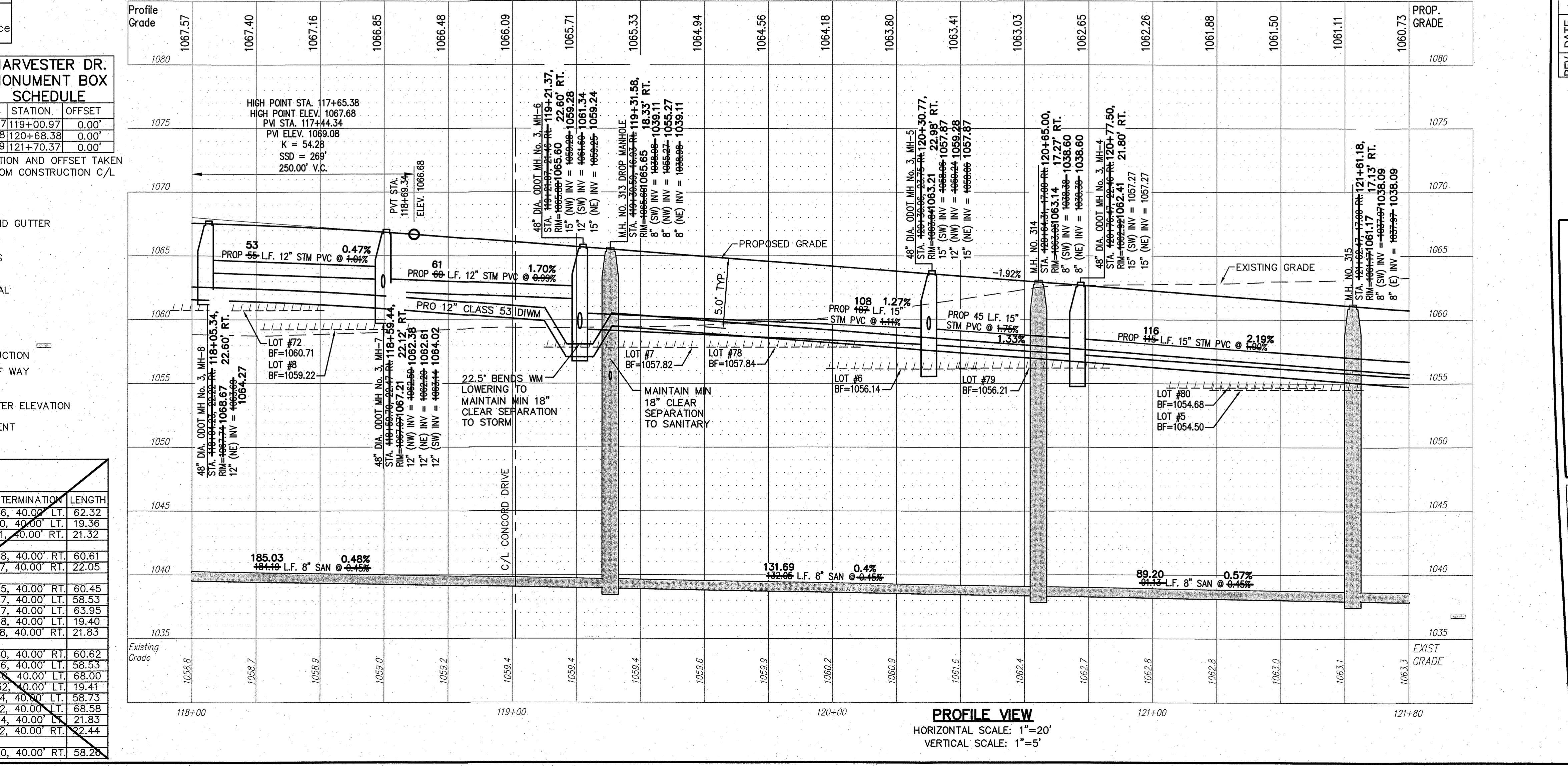
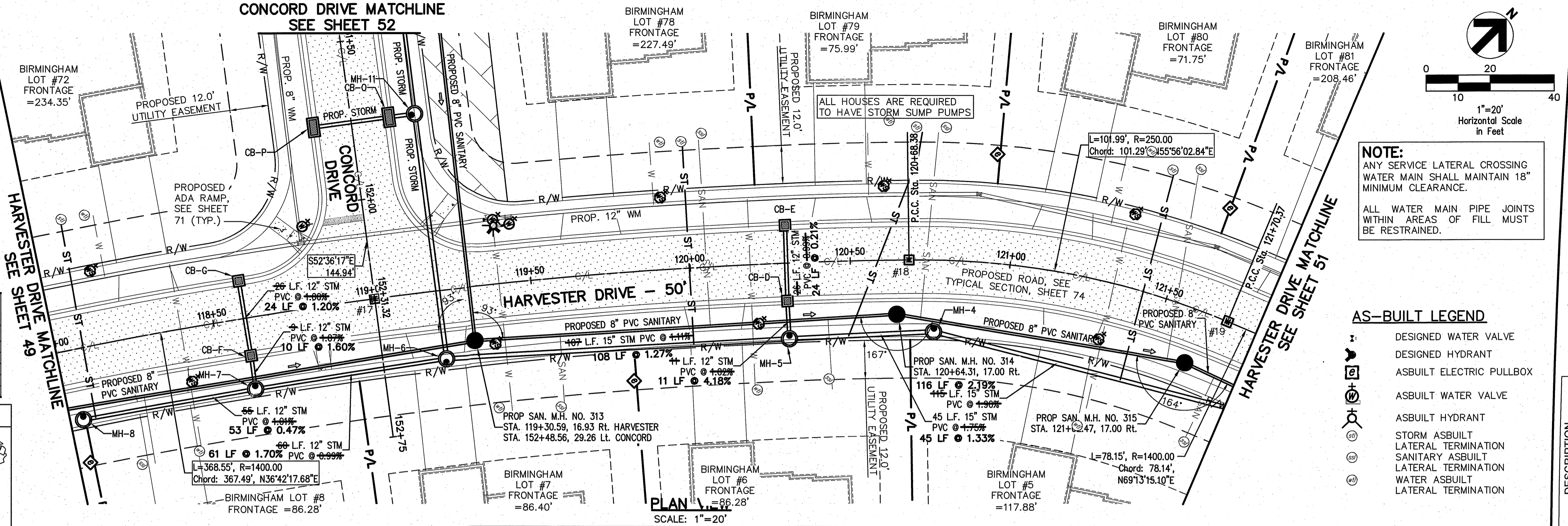
STORM SEWER		
REFER TO GENERAL NOTES SHEET 5 FOR GENERAL NOTES.		
ALL RCP PIPE SHALL BE CLASS 4 PER ODOT 706.02		
ALL HDPE PIPE SHALL BE SMOOTH LINED PER ODOT 707.33		
ALL PVC PIPE SHALL BE SDR 35 PER ODOT 707.45		

LEGEND

SEE GENERAL LEGEND, SHEET 4

- PROPOSED ROLLED CURB AND GUTTER
- PROPOSED WALK
- PROPOSED WALK BY OTHERS
- PROPOSED WATER LATERAL
- PROPOSED SANITARY LATERAL
- PROPOSED STORM LATERAL
- PROPOSED WATER MAIN
- PROPOSED SANITARY MAIN
- PROPOSED STORM MAIN
- PROPOSED C/L OF CONSTRUCTION
- PROPOSED C/L OF RIGHT OF WAY
- PROPOSED MONUMENT BOX
- PROPOSED BOTTOM OF FOOTER ELEVATION
- PROPOSED ASPHALT PAVEMENT

HARVESTER DRIVE CONNECTION SCHEDULE				
UNIT	CONNECTION AT MAIN	RISER HT	LATERAL TERMINATION	LENGTH
72	ST 118+08.15, 22.31' RT.	-	118+09.46, 40.00' LT.	62.32
	WAT 118+19.49, 20.64' LT.	-	118+19.50, 40.00' LT.	19.36
	SAN 118+24.17, 18.68' RT.	16'	118+24.01, 40.00' RT.	21.32
8	ST 118+39.76, 20.61' LT.	-	118+39.48, 40.00' RT.	60.61
	SAN 119+57.53, 17.95' RT.	15'	119+56.87, 40.00' RT.	22.05
7	ST 119+40.03, 20.45' LT.	-	119+40.05, 40.00' RT.	60.45
	SAN 120+05.15, 18.53' RT.	15'	120+04.87, 40.00' LT.	58.53
78	ST 119+99.61, 23.95' RT.	-	119+99.87, 40.00' LT.	63.95
	WAT 119+89.94, 20.61' LT.	-	119+89.88, 40.00' LT.	19.40
	SAN 120+42.47, 18.18' RT.	13'	120+43.18, 40.00' RT.	21.83
6	ST 120+18.81, 20.82' LT.	-	120+18.40, 40.00' RT.	60.62
	SAN 120+71.97, 18.32' RT.	13'	120+70.76, 40.00' LT.	58.53
	ST 120+48.85, 23.44' RT.	-	120+72.44, 40.00' LT.	68.00
	WAT 120+56.22, 20.59' LT.	-	120+56.32, 40.00' LT.	19.41
	SAN 121+56.55, 18.03' RT.	12'	121+47.84, 40.00' LT.	58.73
	ST 121+43.39, 28.55' RT.	-	121+41.42, 40.00' LT.	68.58
	WAT 121+27.94, 18.17' LT.	-	121+27.94, 40.00' LT.	21.83
	SAN 121+73.24, 17.58' RT.	12'	121+72.22, 40.00' RT.	32.44
5	ST 121+32.60, 18.24' LT.	-	121+34.30, 40.00' RT.	58.26



GPD GROUP
Glaus, Pyle, Schomer, Burns & DeHaven, Inc.

520 South Main Street, Suite 2531
Akron, Ohio 44311
330.572.2100 Fax 330.572.2101
Copyright: Glaus, Pyle, Schomer, Burns & DeHaven, Inc. 2014

NOTE:
ANY SERVICE LATERAL CROSSING WATER MAIN SHALL MAINTAIN 18" MINIMUM CLEARANCE.

ALL WATER MAIN PIPE JOINTS WITHIN AREAS OF FILL MUST BE RESTRAINED.

AS-BUILT LEGEND

- DESIGNED WATER VALVE
- DESIGNED HYDRANT
- ASBUILT ELECTRIC PULLBOX
- ASBUILT WATER VALVE
- ASBUILT HYDRANT
- STORM ASBUILT LATERAL TERMINATION
- SANITARY ASBUILT LATERAL TERMINATION
- WATER ASBUILT LATERAL TERMINATION

REV.	DATE	DESCRIPTION
12/9/14		BRIDGE PLAN REVISIONS

THE PRESERVE AT MILLER'S FARM
SE CORNER OF SR 18 AND MEDINA LINE RD
COPLEY, OHIO 44321

PLAN AND PROFILE
HARVESTER DRIVE

ISSUED FOR:	
PERMIT	06-02-14
BID	06-02-14
CONSTRUCTION	09-16-14
AS-BUILT	02-26-15
PROJECT MANAGER	DESIGNER
MAL	KB

JOB NO.
2013258.00

50/81