

HARVESTER DR. MONUMENT BOX SCHEDULE

#	STATION	OFFSET
16	116+99.83	0.00'
23	116+13.22	0.00'

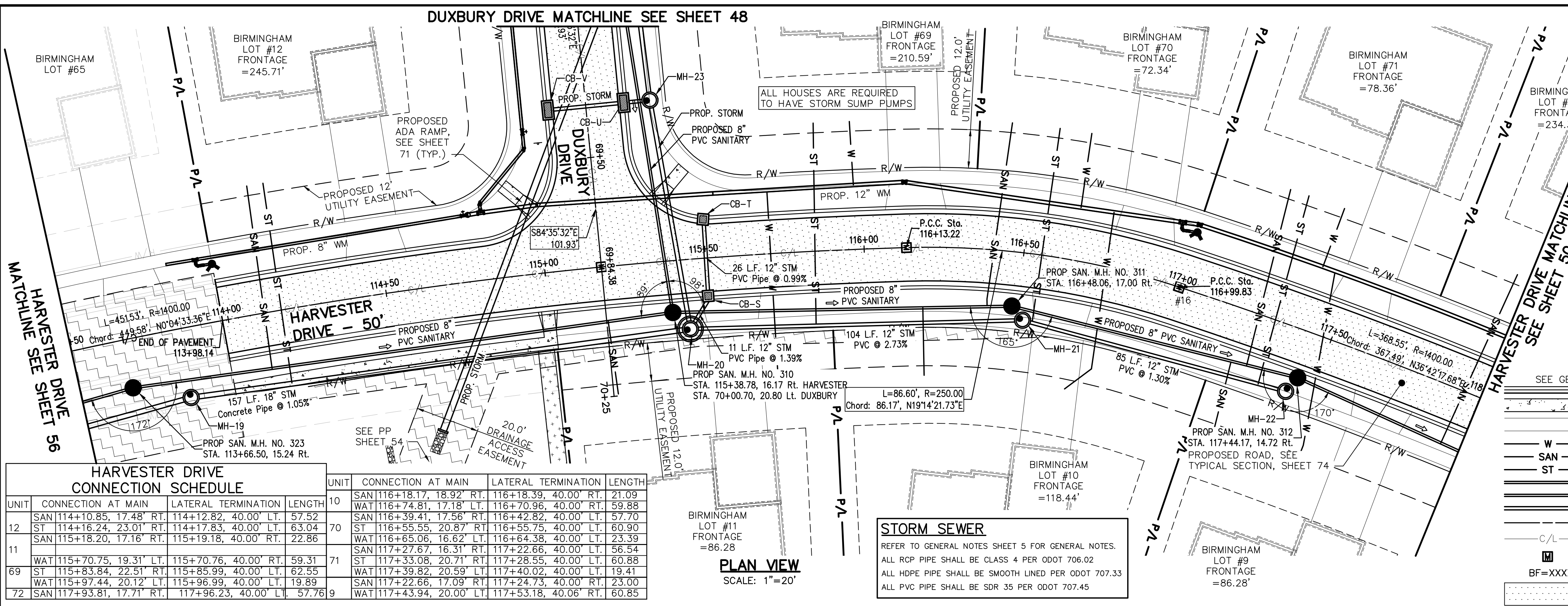
STATION AND OFFSET TAKEN FROM CONSTRUCTION C/L

HARVESTER DRIVE WATER MAIN FITTING SCHEDULE

ITEM	STATION	OFFSET
8" WATER MAIN PLUG	113+84.19	20.48' LT
6" HYD. ASSEMBLY, TYPE B	113+98.14	18.00' LT
8" LINE VALVE	114+77.00	20.78' LT
8" - 6" REDUCER	114+78.33	20.83' LT
12" x 8" TEE	114+82.38	20.99' LT
11.25" BEND	116+13.18	20.50' LT
11.25" BEND	116+99.78	20.50' LT
6" HYD. ASSEMBLY, TYPE B	116+99.83	18.00' LT

- LEGEND**
- SEE GENERAL LEGEND, SHEET 4
 - PROPOSED ROLLED CURB AND GUTTER
 - PROPOSED WALK
 - PROPOSED WALK BY OTHERS
 - PROPOSED WATER LATERAL
 - PROPOSED SANITARY LATERAL
 - PROPOSED STORM LATERAL
 - PROPOSED WATER MAIN
 - PROPOSED SANITARY MAIN
 - PROPOSED STORM MAIN
 - PROPOSED C/L OF CONSTRUCTION
 - PROPOSED C/L OF RIGHT OF WAY
 - PROPOSED MONUMENT BOX
 - PROPOSED BOTTOM OF FOOTER ELEVATION
 - PROPOSED ASPHALT PAVEMENT

REV.	DATE	DESCRIPTION
1	06/02/14	REVISED PER LOCAL AGENCY COMMENTS
2	06/27/14	REVISED PER LOCAL AGENCY COMMENTS
3	07/18/14	REVISED PER LOCAL AGENCY COMMENTS
4	07/25/14	REVISED PER LOCAL AGENCY COMMENTS
5	08/01/14	MILLER PARCEL UTILITY UPDATE
6	08/05/14	COMMENTS FOR GRADING APPROVAL
7	08/20/14	REVISED PER LOCAL AGENCY COMMENTS
8	08/22/14	SANITARY REVISION MH 300-302
9	09/12/14	REVISED PER LOCAL AGENCY COMMENTS

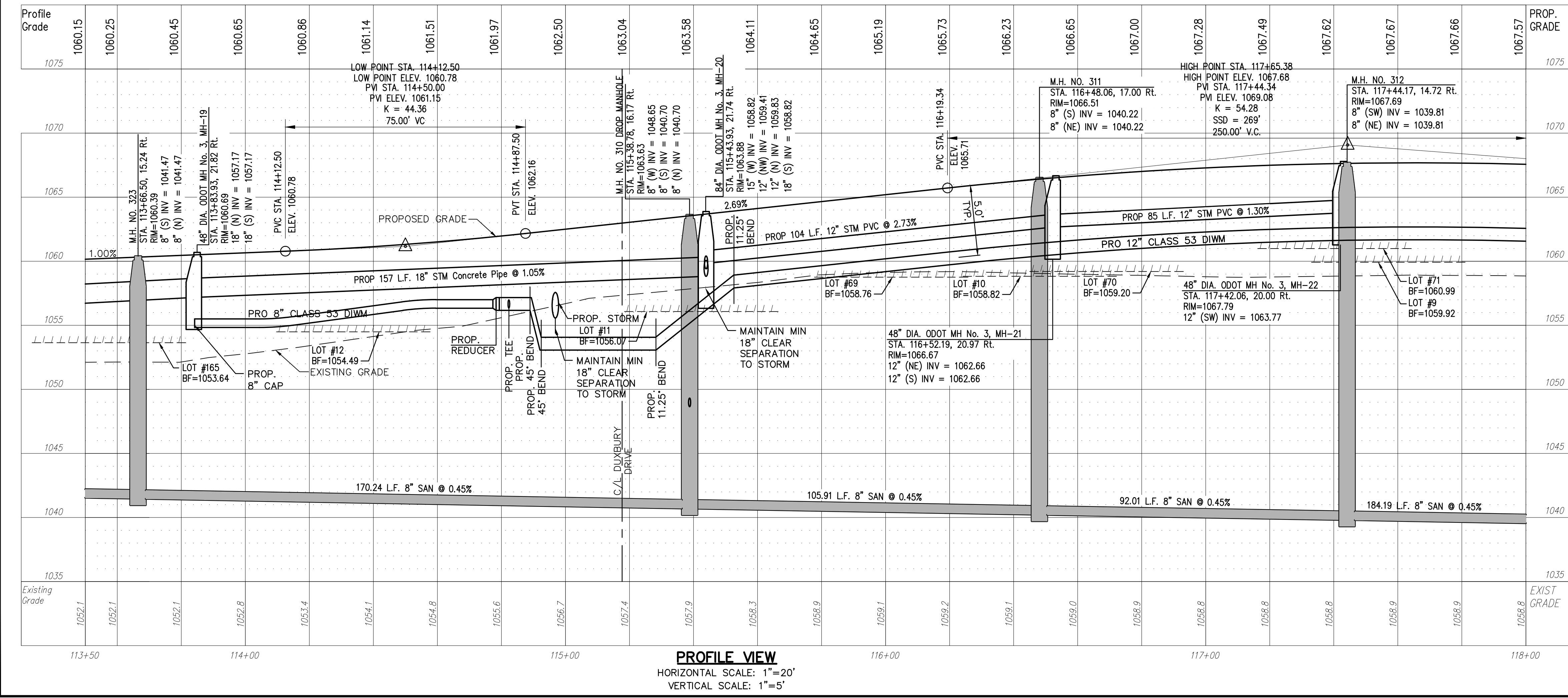


HARVESTER DRIVE CONNECTION SCHEDULE

UNIT	CONNECTION AT MAIN	LATERAL TERMINATION	LENGTH
10	SAN 116+18.17, 18.92' RT.	116+18.39, 40.00' RT.	21.09
	WAT 116+74.81, 17.18' LT.	116+70.96, 40.00' RT.	59.88
12	SAN 114+10.85, 17.48' RT.	114+12.82, 40.00' LT.	57.52
	ST 114+16.24, 23.01' RT.	114+17.83, 40.00' LT.	63.04
	SAN 115+18.20, 17.16' RT.	115+19.18, 40.00' RT.	22.86
11	WAT 115+70.75, 19.31' LT.	115+70.76, 40.00' RT.	59.31
	ST 115+83.84, 22.51' RT.	115+85.99, 40.00' LT.	62.55
	WAT 115+97.44, 20.12' LT.	115+96.99, 40.00' LT.	19.89
72	SAN 117+93.81, 17.71' RT.	117+96.23, 40.00' LT.	57.76

PLAN VIEW CONNECTION SCHEDULE

UNIT	CONNECTION AT MAIN	LATERAL TERMINATION	LENGTH
10	SAN 116+18.17, 18.92' RT.	116+18.39, 40.00' RT.	21.09
	WAT 116+74.81, 17.18' LT.	116+70.96, 40.00' RT.	59.88
12	SAN 114+10.85, 17.48' RT.	114+12.82, 40.00' LT.	57.52
	ST 114+16.24, 23.01' RT.	114+17.83, 40.00' LT.	63.04
	SAN 115+18.20, 17.16' RT.	115+19.18, 40.00' RT.	22.86
11	WAT 115+70.75, 19.31' LT.	115+70.76, 40.00' RT.	59.31
	ST 115+83.84, 22.51' RT.	115+85.99, 40.00' LT.	62.55
	WAT 115+97.44, 20.12' LT.	115+96.99, 40.00' LT.	19.89
72	SAN 117+93.81, 17.71' RT.	117+96.23, 40.00' LT.	57.76



NOTE:
 ANY SERVICE LATERAL CROSSING WATER MAIN SHALL MAINTAIN 18" MINIMUM CLEARANCE.

NOTE:
 ALL OIL AND GAS WELL REMOVALS, PLUGGING/CAPPING, AND ABANDONMENTS SHALL BE IN ACCORDANCE WITH ALL ASSOCIATED REGULATIONS FOR SUCH REMOVALS, INCLUDING BUT NOT LIMITED TO, ODNR, LOCAL, STATE, AND FEDERAL.

EXISTING HIGH PRESSURE GAS MAIN SHALL BE LOCATED AND PROTECTED PRIOR TO AND THROUGHOUT CONSTRUCTION.

Underground Utilities

2 Working Days Before You Dig
 Call 800-362-2764 (Toll Free)
 Ohio Utilities Protection Service

Non-members Must Be Called Directly
 Call 800-925-0988 (Toll Free)
 Oil & Gas Producers Utility Protection Service

PROPOSED STRUCTURE TABLE

Structure Name	Structure Details
CB-S	Round Precast Inlet Basin STA. 115+50.33, 13.01' RT. RIM = 1063.88 12" PVC Pipe INV (W) = 1059.56 12" PVC Pipe INV (SE) = 1059.56
CB-T	ODOT CB No. 3A STA. 115+50.65, -13.21' LT. RIM = 1063.83 12" PVC Pipe INV (E) = 1059.82

THE PRESERVE AT MILLER'S FARM
 SE CORNER OF SR 18 AND MEDINA LINE RD
 COPLEY, OHIO 44321

PLAN AND PROFILE
 HARVESTER DRIVE

ISSUED FOR:

PERMIT	06-02-14
BID	06-02-14
CONSTRUCTION	09-16-14
RECORD	-

PROJECT MANAGER	DESIGNER
MAL	KB

JOB NO.
2013258.00

49/81