

LEGEND
 SEE GENERAL LEGEND, SHEET 4

- PROPOSED ROLLED CURB AND GUTTER
- PROPOSED WALK
- PROPOSED WALK BY OTHERS
- PROPOSED WATER LATERAL
- PROPOSED SANITARY LATERAL
- PROPOSED STORM LATERAL
- PROPOSED WATER MAIN
- PROPOSED SANITARY MAIN
- PROPOSED STORM MAIN
- PROPOSED C/L OF CONSTRUCTION
- PROPOSED C/L OF RIGHT OF WAY
- PROPOSED MONUMENT BOX
- PROPOSED BOTTOM OF FOOTER ELEVATION
- PROPOSED ASPHALT PAVEMENT
- PROPOSED DRAINAGE ACCESS EASEMENT

DUXBURY DRIVE WATER MAIN FITTING SCHEDULE

ITEM	STATION	OFFSET
11.25" BEND	66+31.69	19.61' RT.
11.25" BEND	66+75.70	19.55' RT.
22.5" BEND	67+49.21	16.79' RT.
6" HYD. ASSEMBLY TYPE B	67+80.70	17.32' RT.
11.25" BEND	68+31.69	19.94' RT.
8" LINE VALVE	69+40.00	20.50' RT.
45" BEND	69+45.42	20.56' RT.
45" BEND	69+60.97	35.95' RT.

DUXBURY DR. MONUMENT BOX SCHEDULE

#	STATION	OFFSET
14	68+82.45	0.00'
15	69+84.38	0.00'

STATION AND OFFSET TAKEN FROM CONSTRUCTION C/L

NOTE:
 ANY SERVICE LATERAL CROSSING WATER MAIN SHALL MAINTAIN 18" MINIMUM CLEARANCE.
 ALL WATER MAIN PIPE JOINTS WITHIN AREAS OF FILL MUST BE RESTRAINED.

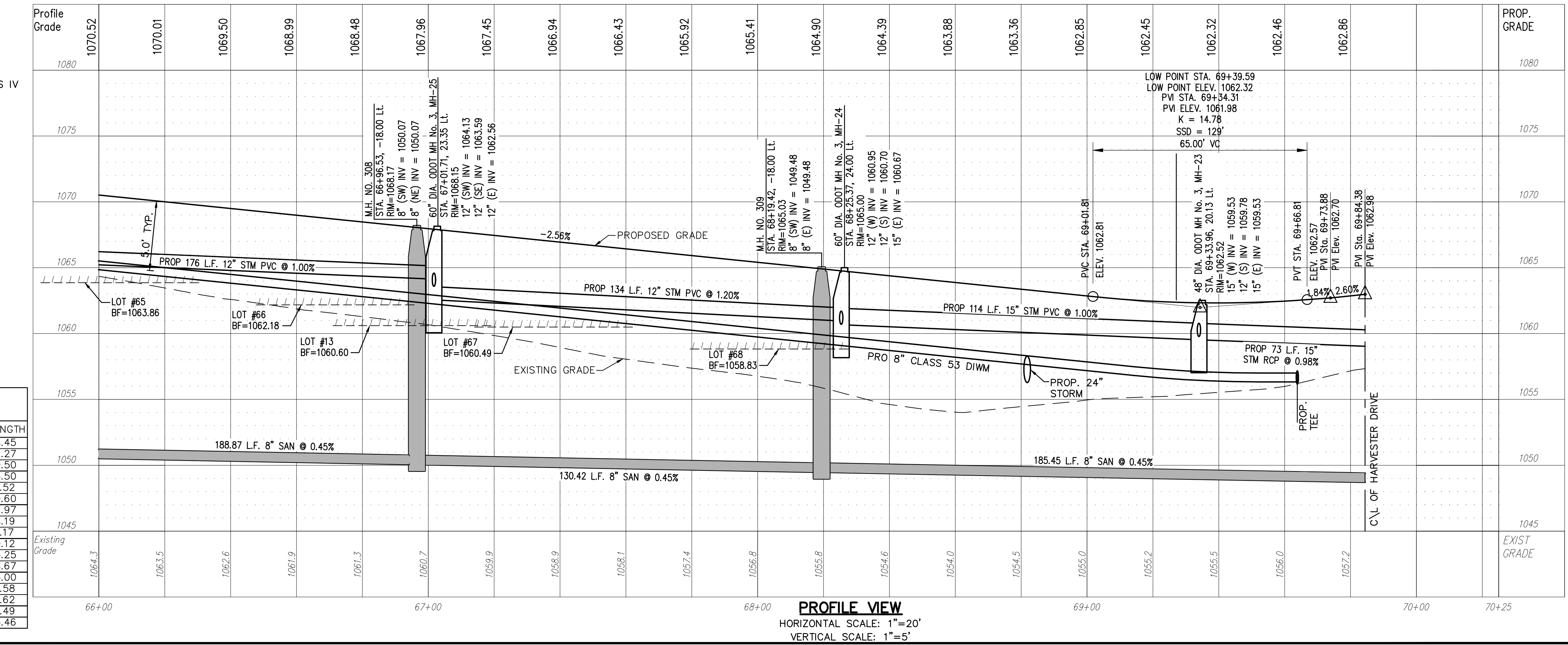
PROPOSED STRUCTURE TABLE

Structure Name	Structure Details
CB-U	ODOT CB No. 3 STA. 69+33.96, -13.00 Lt. RIM = 1062.37 12" RCP* INV (S)=1059.82 12" RCP* INV (N)=1059.82
CB-V	ODOT CB No. 3 STA. 69+33.96, 13.00 Rt. RIM = 1062.37 12" RCP* INV (N)=1059.95
CB-W	ODOT CB No. 3A STA. 68+23.76, -13.00 Lt. RIM = 1064.82 12" PVC INV (N)=1060.81
CB-X	ODOT CB No. 3A STA. 67+00.74, -13.00 Lt. RIM = 1067.97 12" PVC INV (SE)=1063.69 12" PVC INV (NW)=1063.69
CB-Y	ODOT CB No. 3A STA. 67+00.74, 13.00 Rt. RIM = 1067.96 12" PVC INV (NW)=1063.95

STORM SEWER
 REFER TO GENERAL NOTES SHEET 5 FOR GENERAL NOTES.
 ALL RCP PIPE SHALL BE CLASS 4 PER ODOT 706.02
 ALL HDPE PIPE SHALL BE SMOOTH LINED PER ODOT 707.33
 ALL PVC PIPE SHALL BE SDR 35 PER ODOT 707.45

DUXBURY DRIVE CONNECTION SCHEDULE

UNIT	CONNECTION AT MAIN	LATERAL TERMINATION	LENGTH
65	SAN 66+27.08, 1.66' LT.	66+24.35, 40.00' LT.	38.45
	ST 66+19.30, 7.73' LT.	66+19.02, 40.00' LT.	32.27
	WAT 66+11.47, 20.50' RT.	66+11.05, 40.00' LT.	60.50
66	SAN 66+90.19, 15.90' LT.	66+86.35, 40.00' LT.	24.50
	ST 67+01.75, 23.34' LT.	66+94.50, 40.00' LT.	18.52
	WAT 66+85.56, 19.98' RT.	66+77.63, 40.00' LT.	60.60
13	SAN 67+75.89, 10.61' LT.	67+45.68, 40.00' RT.	57.97
	ST 67+30.12, 17.57' LT.	67+21.21, 40.00' RT.	58.19
	WAT 67+03.57, 20.83' RT.	67+03.67, 40.00' RT.	19.17
67	SAN 67+53.50, 9.99' LT.	67+53.96, 40.00' LT.	30.12
	ST 67+48.02, 15.78' LT.	67+49.22, 40.00' LT.	24.25
	WAT 67+37.53, 18.56' RT.	67+39.71, 40.00' LT.	58.67
68	SAN 68+31.13, 16.22' LT.	68+34.11, 40.00' LT.	24.07
	ST 68+25.18, 23.95' LT.	68+21.49, 40.00' LT.	16.58
	WAT 68+07.55, 21.60' RT.	68+06.27, 40.00' LT.	61.62
12	WAT 69+04.36, 20.51' RT.	69+04.36, 40.00' RT.	19.49
	SAN 69+09.62, 15.59' RT.	69+08.13, 40.00' RT.	24.46



PLAN VIEW
 SCALE: 1"=20'

PROFILE VIEW
 HORIZONTAL SCALE: 1"=20'
 VERTICAL SCALE: 1"=5'

REV.	DATE	DESCRIPTION
1	06/02/14	REVISED PER LOCAL AGENCY COMMENTS
2	06/27/14	REVISED PER LOCAL AGENCY COMMENTS
3	07/18/14	REVISED PER LOCAL AGENCY COMMENTS
4	07/25/14	REVISED PER LOCAL AGENCY COMMENTS
5	08/01/14	MILLER PARCEL UTILITY UPDATE
6	08/05/14	COMMENTS FOR GRADING APPROVAL
7	08/20/14	REVISED PER LOCAL AGENCY COMMENTS
8	08/22/14	SANITARY REVISION MH 300-302
9	09/12/14	REVISED PER LOCAL AGENCY COMMENTS

THE PRESERVE AT MILLER'S FARM
 SE CORNER OF SR 18 AND MEDINA LINE RD
 COPLEY, OHIO 44321

PLAN AND PROFILE
DUXBURY DRIVE

ISSUED FOR:

PERMIT	06-02-14
BID	06-02-14
CONSTRUCTION	09-16-14
RECORD	-

PROJECT MANAGER: MAL DESIGNER: KB

JOB NO.
2013258.00

48/81