

**LEGEND**

SEE GENERAL LEGEND, SHEET 4

PROPOSED ROLLED CURB AND GUTTER

PROPOSED WALK

PROPOSED WALK BY OTHERS

PROPOSED WATER LATERAL

PROPOSED SANITARY LATERAL

PROPOSED STORM LATERAL

PROPOSED WATER MAIN

PROPOSED SANITARY MAIN

PROPOSED STORM MAIN

PROPOSED C/L OF CONSTRUCTION

PROPOSED C/L OF RIGHT OF WAY

PROPOSED MONUMENT BOX

PROPOSED BOTTOM OF FOOTER ELEVATION

PROPOSED ASPHALT PAVEMENT

PROPOSED DRAINAGE ACCESS EASEMENT

**DUXBURY DR. MONUMENT BOX SCHEDULE**

#	STATION	OFFSET
14	68+82.45	0.00'
15	69+84.38	0.00'

STATION AND OFFSET TAKEN FROM CONSTRUCTION C/L

**NOTE:**  
 ANY SERVICE LATERAL CROSSING WATER MAIN SHALL MAINTAIN 18" MINIMUM CLEARANCE.  
 ALL WATER MAIN PIPE JOINTS WITHIN AREAS OF FILL MUST BE RESTRAINED.

**DUXBURY DRIVE CONNECTION SCHEDULE**

UNIT	CONNECTION AT MAIN	RISER HEIGHT	LATERAL TERMINATION	LENGTH
65	SAN 66+27.38, 1.66' LT.	9'	66+24.35, 40.00' LT.	38.45
	ST 66+19.30, 7.73' LT.	-	66+19.02, 40.00' LT.	32.27
	WAT 66+90.19, 15.90' RT.	-	66+77.05, 40.00' LT.	60.50
66	SAN 67+01.75, 23.34' LT.	8'	66+86.35, 40.00' LT.	24.50
	WAT 66+85.56, 19.98' RT.	-	66+77.63, 40.00' LT.	60.60
	SAN 67+75.89, 10.61' LT.	6'	67+45.68, 40.00' RT.	57.97
13	ST 67+30.12, 17.57' LT.	-	67+21.21, 40.00' RT.	58.19
	WAT 67+03.57, 20.83' RT.	-	67+03.67, 40.00' RT.	19.17
	SAN 67+53.50, 9.99' LT.	6'	67+53.96, 40.00' LT.	30.12
67	ST 67+48.02, 17.78' LT.	-	67+48.22, 40.00' LT.	24.25
	WAT 67+37.57, 18.56' RT.	-	67+39.74, 40.00' LT.	58.67
	SAN 68+31.13, 16.22' LT.	5'	68+34.11, 40.00' LT.	24.00
68	ST 68+25.18, 23.95' LT.	-	68+21.49, 40.00' LT.	16.58
	WAT 68+07.55, 21.60' RT.	-	68+06.27, 40.00' LT.	61.62
12	WAT 69+04.36, 20.51' RT.	-	69+04.36, 40.00' RT.	19.49
69	SAN 69+09.62, 15.59' RT.	5'	69+08.13, 40.00' RT.	24.48

**AS-BUILT LEGEND**

- DESIGNED WATER VALVE
- DESIGNED HYDRANT
- ASBUILT ELECTRIC PULLBOX
- ASBUILT WATER VALVE
- ASBUILT HYDRANT
- STORM ASBUILT LATERAL TERMINATION
- SANITARY ASBUILT LATERAL TERMINATION
- WATER ASBUILT LATERAL TERMINATION

**DUXBURY DRIVE WATER MAIN FITTING SCHEDULE**

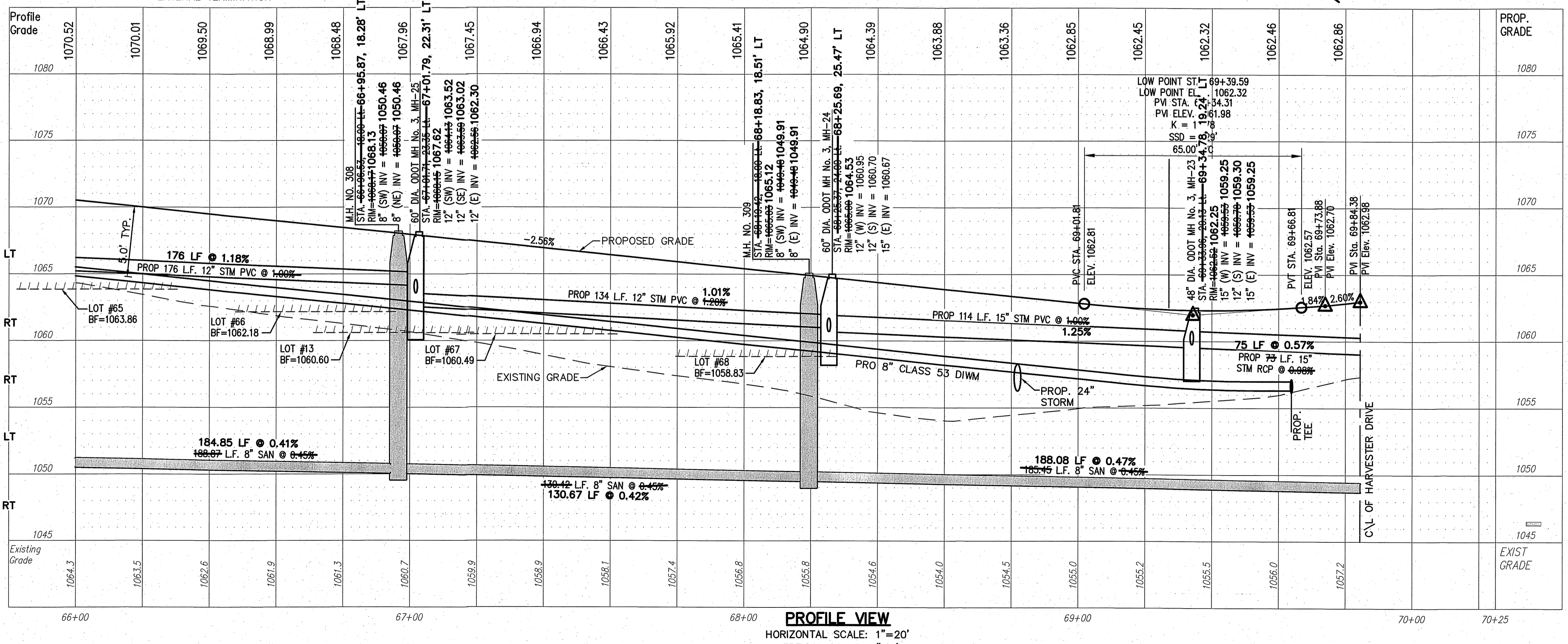
ITEM	STATION	OFFSET
11.25" BEND	66+31.69	19.61' RT.
11.25" BEND	66+75.70	19.55' RT.
22.5" BEND	67+49.21	16.79' RT.
6" HYD. ASSEMBLY, TYPE B	67+80.70	17.32' RT.
11.25" BEND	68+31.69	19.94' RT.
8" LINE VALVE	69+40.00	10.50' RT.
45" BEND	69+45.42	20.35' RT.
45" BEND	69+60.97	35.95' RT.

**PROPOSED STRUCTURE TABLE**

Structure Name	Structure Details
CB-U	ODOT CB No. 3 STA. 69+33.96, 13.00' LT. 69+34.40, 12.21' LT RIM = 1062.37 1062.45 12" RCP* INV (S) = 1059.99 12" RCP* INV (N) = 1059.99
CB-V	ODOT CB No. 3 STA. 69+33.96, 13.00' RT. 69+34.06, 11.68' RT RIM = 1062.37 1062.38 12" RCP* INV (N) = 1059.99 *CLASS IV
CB-W	ODOT CB No. 3A STA. 68+23.76, 13.00' LT. 68+23.01, 12.20' RT RIM = 1064.82 1064.80 12" PVC INV (N) = 1060.93
CB-X	ODOT CB No. 3A STA. 67+00.74, 13.00' LT. 67+00.53, 12.17' LT RIM = 1067.97 1067.99 12" PVC INV (SE) = 1063.92 12" PVC INV (NW) = 1063.92
CB-Y	ODOT CB No. 3A STA. 67+00.74, 13.00' RT. 67+01.37, 11.97' RT RIM = 1067.96 1068.00 12" PVC INV (NW) = 1063.95 1064.40

**STORM SEWER**

REFER TO GENERAL NOTES SHEET 5 FOR GENERAL NOTES.  
 ALL RCP PIPE SHALL BE CLASS 4 PER ODOT 706.02  
 ALL HDPE PIPE SHALL BE SMOOTH LINED PER ODOT 707.33  
 ALL PVC PIPE SHALL BE SDR 35 PER ODOT 707.45



DESCRIPTION

BRIDGE PLAN REVISIONS

REV.	DATE	DESCRIPTION
1/2/9/14		

THE PRESERVE AT MILLER'S FARM  
 SE CORNER OF SR 18 AND MEDINA LINE RD  
 COPLEY, OHIO 44321

**PLAN AND PROFILE**  
 DUXBURY DRIVE

ISSUED FOR:

PERMIT	06-02-14
BID	06-02-14
CONSTRUCTION	09-16-14
AS-BUILT	02-26-15

PROJECT MANAGER	DESIGNER
MAL	KB

JOB NO.  
**2013258.00**

**48/81**