

LEGEND
 SEE GENERAL LEGEND, SHEET 4

	PROPOSED ROLLED CURB AND GUTTER
	PROPOSED WALK
	PROPOSED WALK BY OTHERS
	PROPOSED WATER LATERAL
	PROPOSED SANITARY LATERAL
	PROPOSED STORM LATERAL
	PROPOSED WATER MAIN
	PROPOSED SANITARY MAIN
	PROPOSED STORM MAIN
	PROPOSED C/L OF CONSTRUCTION
	PROPOSED C/L OF RIGHT OF WAY
	PROPOSED MONUMENT BOX
	PROPOSED BOTTOM OF FOOTER ELEVATION
	PROPOSED ASPHALT PAVEMENT

DUXBURY DR. MONUMENT BOX SCHEDULE

#	STATION	OFFSET
11	63+15.37	0.00'
12	63+36.31	0.00'
13	64+55.12	0.00'

STATION AND OFFSET TAKEN FROM CONSTRUCTION C/L

DUXBURY DRIVE WATER MAIN FITTING SCHEDULE

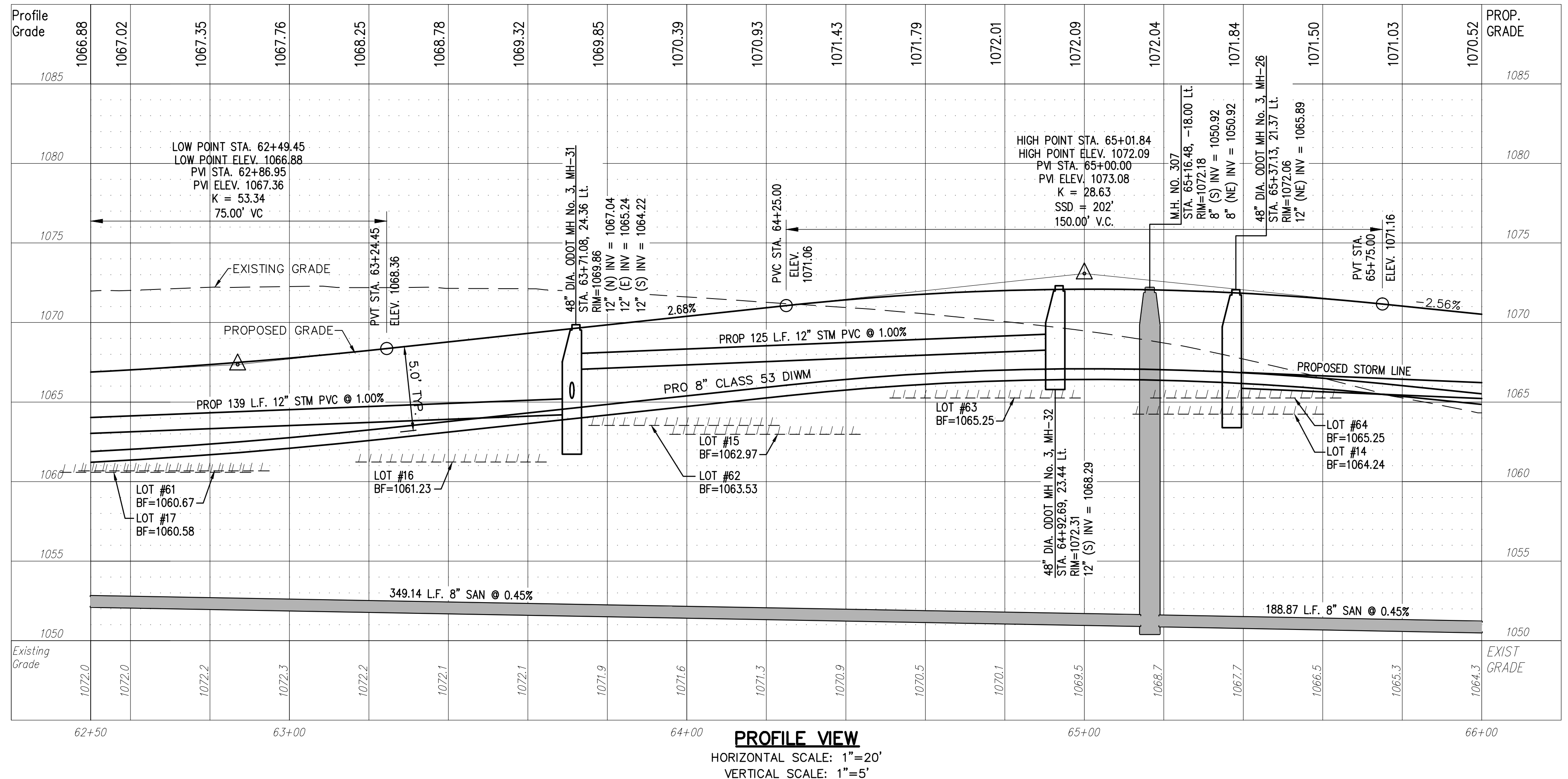
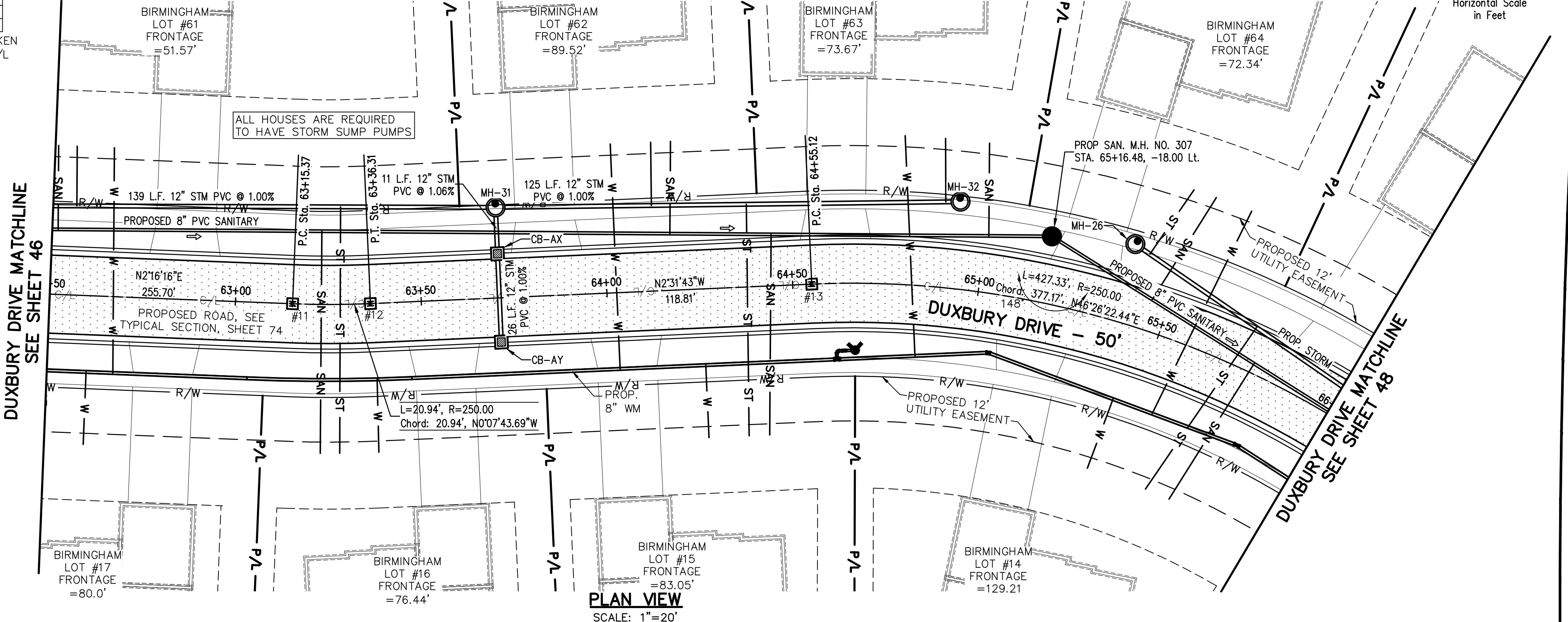
ITEM	STATION	OFFSET
6" HYD. ASSEMBLY, TYPE B	64+66.88	18.00' RT.
11.25" BEND	65+05.21	15.85' RT.
11.25" BEND	65+82.04	19.17' RT.

PROPOSED STRUCTURE TABLE

Structure Name	Structure Details
CB-AX	ODOT CB No. 3A STA. 63+71.05, -13.00 Lt. RIM = 1069.63 12" PVC INV (E)=1065.36 12" PVC INV (W)=1065.36
CB-AY	ODOT CB No. 3A STA. 63+71.05, 13.00 Rt. RIM = 1069.63 12" PVC INV (W)=1065.62

DUXBURY DRIVE CONNECTION SCHEDULE

UNIT	CONNECTION AT MAIN	LATERAL TERMINATION	LENGTH
17	SAN		
	WAT	62+60.60, 20.50' RT.	62+60.60, 40.00' RT. 19.50
	SAN	62+51.57, 17.49' LT.	62+50.83, 40.00' LT. 22.52
	ST	62+56.36, 23.98' LT.	62+55.84, 40.00' LT. 16.03
	WAT	62+67.81, 20.50' RT.	62+65.84, 40.00' LT. 60.54
61	SAN	63+23.08, 19.69' LT.	63+23.17, 40.00' RT. 59.69
	ST	63+28.63, 26.23' LT.	63+27.67, 40.00' RT. 66.24
	WAT	63+37.21, 20.41' RT.	63+36.81, 40.00' RT. 19.60
	SAN	64+17.60, 15.23' LT.	64+18.87, 40.00' LT. 24.80
	ST	64+12.99, 23.01' LT.	64+13.34, 40.00' LT. 17.00
	WAT	64+02.84, 20.90' RT.	64+02.84, 40.00' LT. 60.50
	ST	64+44.81, 13.83' LT.	64+42.05, 40.00' RT. 53.90
15	SAN	64+38.51, 22.20' LT.	64+36.52, 40.00' RT. 62.23
	WAT	64+25.71, 20.50' RT.	64+25.71, 40.00' RT. 19.50
	SAN	65+00.78, 15.25' LT.	64+97.96, 40.00' LT. 25.00
	ST	64+89.14, 23.00' LT.	64+87.73, 40.00' LT. 17.07
	WAT	64+84.27, 18.93' RT.	64+78.33, 40.00' LT. 59.25
64	SAN	65+45.40, 8.49' LT.	65+52.16, 40.00' LT. 32.36
	ST	65+41.31, 19.92' LT.	65+46.68, 40.00' LT. 20.96
	WAT	65+55.78, 20.48' RT.	65+60.94, 39.95' LT. 60.66
	SAN	65+76.56, 2.62' LT.	65+70.44, 40.00' RT. 43.00
14	ST	65+73.14, 11.69' LT.	65+62.25, 40.00' RT. 52.69
	WAT	65+43.57, 20.23' RT.	65+42.48, 40.00' RT. 19.79



STORM SEWER
 REFER TO GENERAL NOTES SHEET 5 FOR GENERAL NOTES.
 ALL RCP PIPE SHALL BE CLASS 4 PER ODOT 706.02
 ALL HDPE PIPE SHALL BE SMOOTH LINED PER ODOT 707.33
 ALL PVC PIPE SHALL BE SDR 35 PER ODOT 707.45

NOTE:
 ANY SERVICE LATERAL CROSSING WATER MAIN SHALL MAINTAIN 18" MINIMUM CLEARANCE.
 ALL WATER MAIN PIPE JOINTS WITHIN AREAS OF FILL MUST BE RESTRAINED.

Underground Utilities

2 Working Days Before You Dig
 Call 800-362-2764 (Toll Free)
 Ohio Utilities Protection Service

Non-members Must Be Called Directly
 Call 800-925-0988 (Toll Free)
 Oil & Gas Producers Utility Protection Service

NOTE:
 ALL OIL AND GAS WELL REMOVALS, PLUGGING/CAPPING, AND ABANDONMENTS SHALL BE IN ACCORDANCE WITH ALL ASSOCIATED REGULATIONS FOR SUCH REMOVALS, INCLUDING BUT NOT LIMITED TO, ODNR, LOCAL, STATE, AND FEDERAL.
 EXISTING HIGH PRESSURE GAS MAIN SHALL BE LOCATED AND PROTECTED PRIOR TO AND THROUGHOUT CONSTRUCTION.

REVISIONS

REV.	DATE	DESCRIPTION
1	06/02/14	REVISED PER LOCAL AGENCY COMMENTS
2	06/27/14	REVISED PER LOCAL AGENCY COMMENTS
3	07/18/14	REVISED PER LOCAL AGENCY COMMENTS
4	07/18/14	REVISED PER LOCAL AGENCY COMMENTS
5	08/01/14	MILLER PARCEL UTILITY UPDATE
6	08/05/14	COMMENTS FOR GRADING APPROVAL
7	08/20/14	REVISED PER LOCAL AGENCY COMMENTS
8	08/22/14	SANITARY REVISION MH 300-302
9	09/12/14	REVISED PER LOCAL AGENCY COMMENTS

THE PRESERVE AT MILLER'S FARM
 SE CORNER OF SR 18 AND MEDINA LINE RD
 COPLEY, OHIO 44321

PLAN AND PROFILE
 DUXBURY DRIVE

ISSUED FOR:

PERMIT	06-02-14
BID	06-02-14
CONSTRUCTION	09-16-14
RECORD	-

PROJECT MANAGER MAL **DESIGNER** KB

JOB NO.
2013258.00

47/81