

**LEGEND**  
 SEE GENERAL LEGEND, SHEET 4

	PROPOSED ROLLED CURB AND GUTTER
	PROPOSED WALK
	PROPOSED WALK BY OTHERS
	PROPOSED WATER LATERAL
	PROPOSED SANITARY LATERAL
	PROPOSED STORM LATERAL
	PROPOSED WATER MAIN
	PROPOSED SANITARY MAIN
	PROPOSED STORM MAIN
	PROPOSED C/L OF CONSTRUCTION
	PROPOSED C/L OF RIGHT OF WAY
	PROPOSED MONUMENT BOX
	PROPOSED BOTTOM OF FOOTER ELEVATION
	PROPOSED ASPHALT PAVEMENT

**DUXBURY DR. MONUMENT BOX SCHEDULE**

#	STATION	OFFSET
11	63+15.37	0.00'
12	63+36.31	0.00'
13	64+55.12	0.00'

STATION AND OFFSET TAKEN FROM CONSTRUCTION C/L

**DUXBURY DRIVE WATER MAIN FITTING SCHEDULE**

ITEM	STATION	OFFSET
6" HYD. ASSEMBLY, TYPE B	64+66.88	18.00' RT.
11.25' BEND	65+05.21	15.85' RT.
11.25' BEND	65+82.04	19.17' RT.

**PROPOSED STRUCTURE TABLE**

Structure Name	Structure Details
CB-AX	ODOT CB No. 3A STA. 63+77.05, 13.00' LT. 63+70.96, 11.92' Lt. RIM = 1065.65/1069.65 12" PVC INV (E) = 1065.36/1065.78 12" PVC INV (W) = 1065.36/1065.78
CB-AY	ODOT CB No. 3A STA. 63+77.05, 13.00' LT. 63+70.81, 12.03' Rt. RIM = 1065.65/1069.75 12" PVC INV (W) = 1065.62/1066.07

**DUXBURY DRIVE CONNECTION SCHEDULE**

UNIT	CONNECTION AT MAIN	RISER HEIGHT	LATERAL TERMINATION	LENGTH
17	SAN ST	-	-	-
	WAT 62+60.00, 20.50' RT.	-	62+60.60, 40.00' RT.	19.50
	SAN 62+51.57, 17.49' LT.	4	62+50.85, 40.00' LT.	22.52
61	ST 62+56.36, 23.08' RT.	-	62+56.36, 40.00' LT.	16.03
	WAT 62+67.81, 20.50' RT.	-	62+65.84, 40.00' LT.	60.54
	SAN 63+23.08, 19.89' LT.	5	63+23.17, 40.00' RT.	59.89
16	ST 63+28.63, 26.23' LT.	-	63+27.67, 40.00' RT.	66.24
	WAT 63+37.21, 20.41' RT.	-	63+36.81, 40.00' RT.	19.60
	SAN 64+17.60, 15.23' LT.	7	64+18.87, 40.00' LT.	24.80
62	ST 64+12.99, 23.01' LT.	-	64+13.54, 40.00' LT.	17.00
	WAT 64+02.64, 20.50' RT.	-	64+02.64, 40.00' LT.	60.50
	SAN 64+44.81, 13.83' LT.	7	64+42.05, 40.00' RT.	53.90
	ST 64+38.51, 22.20' LT.	-	64+36.52, 40.00' LT.	62.23
15	WAT 64+25.71, 20.50' RT.	-	64+25.71, 40.00' RT.	19.50
	SAN 65+00.78, 15.25' LT.	10'	64+97.96, 40.00' LT.	25.00
63	ST 64+89.14, 23.00' LT.	-	64+87.75, 40.00' LT.	17.07
	WAT 64+84.77, 18.93' RT.	-	64+78.33, 40.00' LT.	59.25
	SAN 65+25.40, 8.49' LT.	10'	65+52.16, 40.00' LT.	32.36
64	ST 64+41.31, 19.92' LT.	-	65+46.68, 40.00' LT.	20.96
	WAT 65+55.78, 20.48' RT.	-	65+60.94, 39.95' LT.	60.66
	SAN 65+76.56, 2.62' LT.	9'	65+70.44, 40.00' RT.	13.00
14	ST 65+73.14, 11.69' LT.	-	65+62.25, 40.00' RT.	52.89
	WAT 65+43.57, 20.23' RT.	-	65+42.48, 40.00' RT.	19.79

**NOTE:**  
 ANY SERVICE LATERAL CROSSING WATER MAIN SHALL MAINTAIN 18" MINIMUM CLEARANCE.  
 ALL WATER MAIN PIPE JOINTS WITHIN AREAS OF FILL MUST BE RESTRAINED.

**STORM SEWER**  
 REFER TO GENERAL NOTES SHEET 5 FOR GENERAL NOTES.  
 ALL RCP PIPE SHALL BE CLASS 4 PER ODOT 706.02  
 ALL HDPE PIPE SHALL BE SMOOTH LINED PER ODOT 707.33  
 ALL PVC PIPE SHALL BE SDR 35 PER ODOT 707.45

**Underground Utilities**

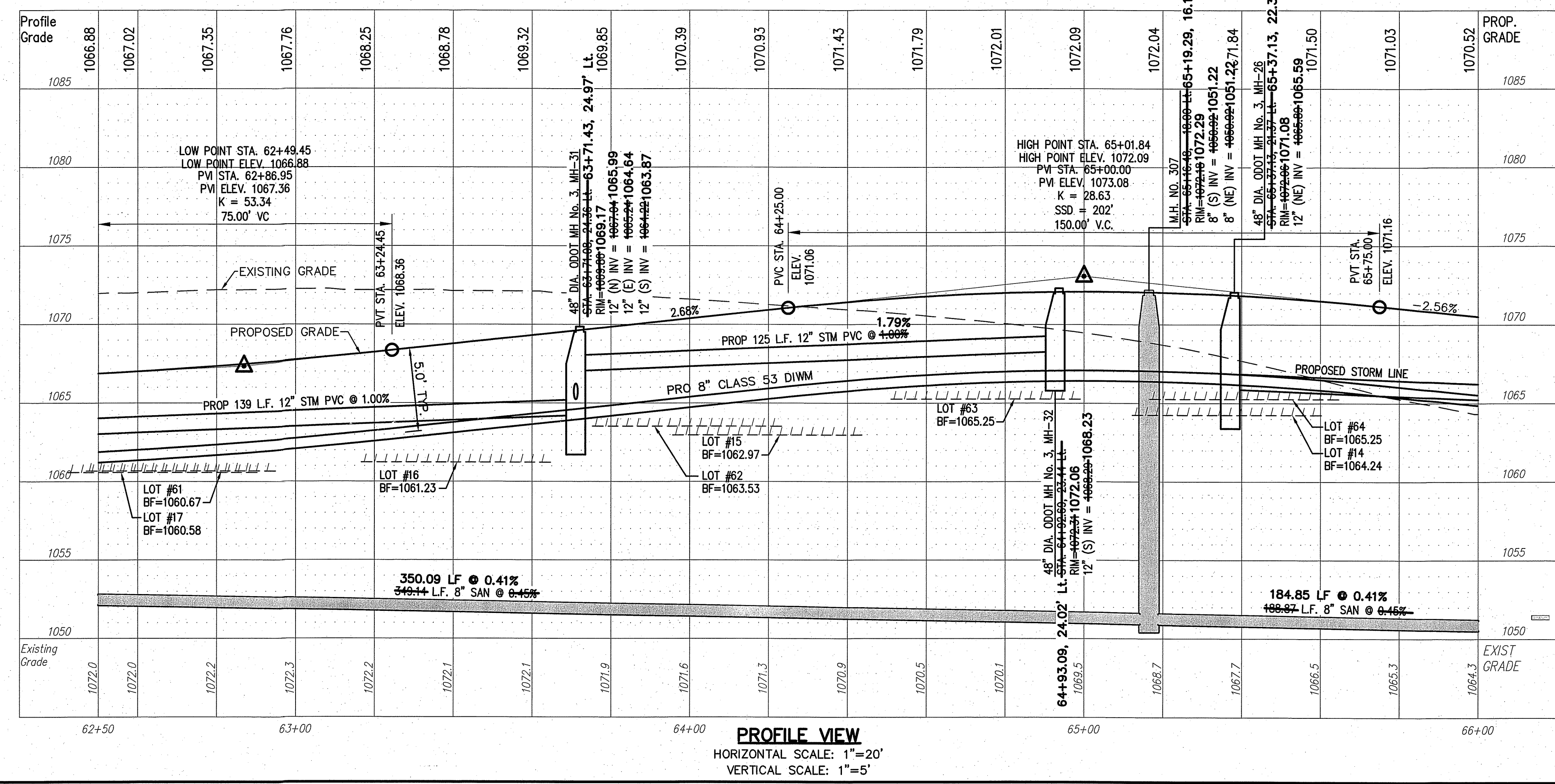
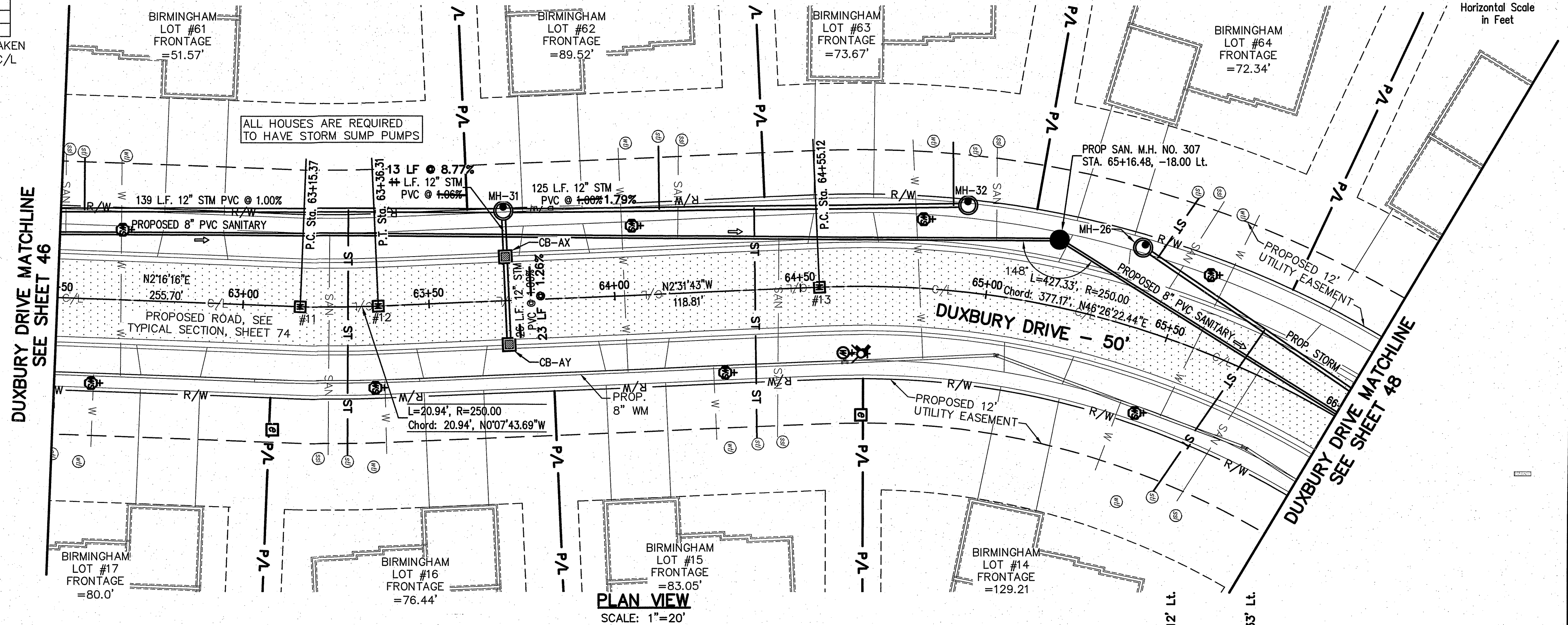
2 Working Days Before You Dig  
 Call 800-362-2764 (Toll Free)  
 Ohio Utilities Protection Service

Non-members Must Be Called Directly  
 Call 800-925-0988 (Toll Free)  
 Oil & Gas Producers Utility Protection Service

**AS-BUILT LEGEND**

	DESIGNED WATER VALVE
	DESIGNED HYDRANT
	ASBUILT ELECTRIC PULLBOX
	ASBUILT WATER VALVE
	ASBUILT HYDRANT
	STORM ASBUILT LATERAL TERMINATION
	SANITARY ASBUILT LATERAL TERMINATION
	WATER ASBUILT LATERAL TERMINATION

**NOTE:**  
 ALL OIL AND GAS WELL REMOVALS, PLUGGING/CAPPING, AND ABANDONMENTS SHALL BE IN ACCORDANCE WITH ALL ASSOCIATED REGULATIONS FOR SUCH REMOVALS, INCLUDING BUT NOT LIMITED TO, ODNR, LOCAL, STATE, AND FEDERAL.  
 EXISTING HIGH PRESSURE GAS MAIN SHALL BE LOCATED AND PROTECTED PRIOR TO AND THROUGHOUT CONSTRUCTION.



REV.	DATE	DESCRIPTION
12/8/14		BRIDGE PLAN REVISIONS

THE PRESERVE AT MILLER'S FARM  
 SE CORNER OF SR 18 AND MEDINA LINE RD  
 COPLEY, OHIO 44321

**PLAN AND PROFILE  
 DUXBURY DRIVE**

**ISSUED FOR:**

PERMIT	06-02-14
BID	06-02-14
CONSTRUCTION	09-16-14
AS-BUILT	02-26-15

PROJECT MANAGER	DESIGNER
MAL	KB

JOB NO.  
**2013258.00**

**47/81**