

**LEGEND**  
SEE GENERAL LEGEND, SHEET 4

PROPOSED ROLLED CURB AND GUTTER  
PROPOSED WALK  
PROPOSED WALK BY OTHERS  
PROPOSED WATER LATERAL  
PROPOSED SANITARY LATERAL  
PROPOSED STORM LATERAL  
PROPOSED WATER MAIN  
PROPOSED SANITARY MAIN  
PROPOSED STORM MAIN  
PROPOSED C/L OF CONSTRUCTION  
PROPOSED C/L OF RIGHT OF WAY  
PROPOSED MONUMENT BOX  
PROPOSED BOTTOM OF FOOTER ELEVATION  
PROPOSED ASPHALT PAVEMENT  
PROPOSED DRAINAGE ACCESS EASEMENT

W  
SAN  
ST

BF=XXXX

DUXBURY DRIVE WATER MAIN FITTING SCHEDULE		
ITEM	STATION	OFFSET
6" HYD. ASSEMBLY, TYPE B	60+63.25	20.50' RT.
8"x6" REDUCER	60+68.30	20.50' RT.
6" HYD. ASSEMBLY, TYPE B	61+48.30	18.00' RT.
8" LINE VALVE	61+51.30	20.50' RT.
8"x 8" TEE	62+07.28	20.49' RT.
8" LINE VALVE	62+11.78	20.52' RT.

PROPOSED STRUCTURE TABLE	
Structure Name	Structure Details
CB-AB	ODOT CB No. 3A STA. 62+30.03,-13.00 Lt. RIM = 1066.65 12" PVC Pipe INV (E)=1062.37 12" PVC Pipe INV (W)=1062.37
CB-AC	ODOT CB No. 3A STA. 62+30.13.00 Rt. RIM = 1066.65 12" PVC Pipe INV (W)=1062.63
HW-3	HALF HEIGHT HEADWALL STA. 59+09.20,-188.05 Lt. RIM = 1060.59 30" HDPE Pipe INV (NE)=1057.45

**NOTE:**  
ANY SERVICE LATERAL CROSSING WATER MAIN SHALL MAINTAIN 18" MINIMUM CLEARANCE.  
ALL WATER MAIN PIPE JOINTS WITHIN AREAS OF FILL MUST BE RESTRAINED.

DUXBURY DRIVE CONNECTION SCHEDULE			
UNIT	CONNECTION AT MAIN	LATERAL TERMINATION	LENGTH
102	SAN 60+13.47, 13.94' LT.	60+16.88, 40.00' LT.	26.30
19	SAN 60+80.66, 11.92' LT.	60+79.71, 40.00' LT.	28.10
	ST 60+85.26, 18.07' LT.	60+84.60, 40.00' LT.	21.94
82	SAN 60+85.30, 12.00' LT.	60+85.30, 40.00' RT.	52.00
18	SAN 61+61.21, 14.53' LT.	61+63.06, 40.00' RT.	54.57
	ST 61+66.02, 20.24' LT.	61+68.06, 40.00' RT.	60.28
	WAT 61+77.41, 20.50' RT.	61+78.07, 40.00' RT.	19.51
17	SAN 62+42.54, 17.20' LT.	62+44.41, 40.00' RT.	57.23
	ST 62+47.32, 23.65' LT.	62+49.62, 40.00' RT.	63.70

**STORM SEWER**  
REFER TO GENERAL NOTES SHEET 5 FOR GENERAL NOTES.  
ALL RCP PIPE SHALL BE CLASS 4 PER ODOT 706.02  
ALL HDPE PIPE SHALL BE SMOOTH LINED PER ODOT 707.33  
ALL PVC PIPE SHALL BE SDR 35 PER ODOT 707.45

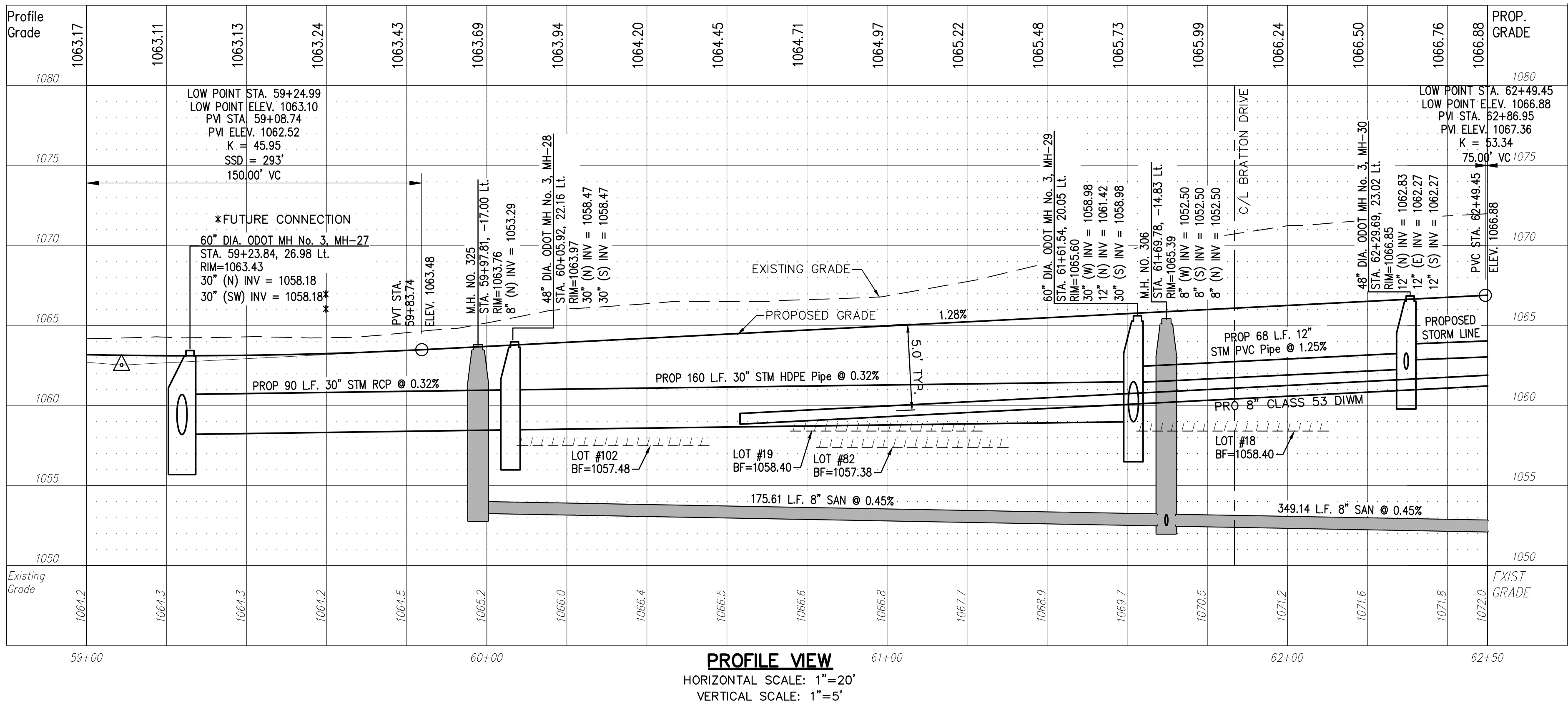
**Underground Utilities**

2 Working Days  
Before You Dig  
Call 800-362-2764 (Toll Free)  
Ohio Utilities Protection Service

Non-members  
Must Be Called Directly

Call 800-925-0988 (Toll Free)  
Oil & Gas Producers Utility Protection Service

**NOTE:**  
ALL OIL AND GAS WELL REMOVALS, PLUGGING/CAPPING, AND ABANDONMENTS SHALL BE IN ACCORDANCE WITH ALL ASSOCIATED REGULATIONS FOR SUCH REMOVALS, INCLUDING BUT NOT LIMITED TO, ODNR, LOCAL, STATE, AND FEDERAL.  
EXISTING HIGH PRESSURE GAS MAIN SHALL BE LOCATED AND PROTECTED PRIOR TO AND THROUGHOUT CONSTRUCTION.



REV.	DATE	DESCRIPTION
1	06/02/14	REVISED PER LOCAL AGENCY COMMENTS
2	06/27/14	REVISED PER LOCAL AGENCY COMMENTS
3	07/18/14	REVISED PER LOCAL AGENCY COMMENTS
4	07/25/14	REVISED PER LOCAL AGENCY COMMENTS
5	08/01/14	MILLER PARCEL UTILITY UPDATE
6	08/05/14	COMMENTS FOR GRADING APPROVAL
7	08/20/14	REVISED PER LOCAL AGENCY COMMENTS
8	08/22/14	SANITARY REVISION MH 300-302
9	09/12/14	REVISED PER LOCAL AGENCY COMMENTS

THE PRESERVE AT MILLER'S FARM  
SE CORNER OF SR 18 AND MEDINA LINE RD  
COPLEY, OHIO 44321

PLAN AND PROFILE  
DUXBURY DRIVE

ISSUED FOR:	
PERMIT	06-02-14
BID	06-02-14
CONSTRUCTION	09-16-14
RECORD	-

PROJECT MANAGER	DESIGNER
MAL	KB

JOB NO.  
2013258.00

46/81