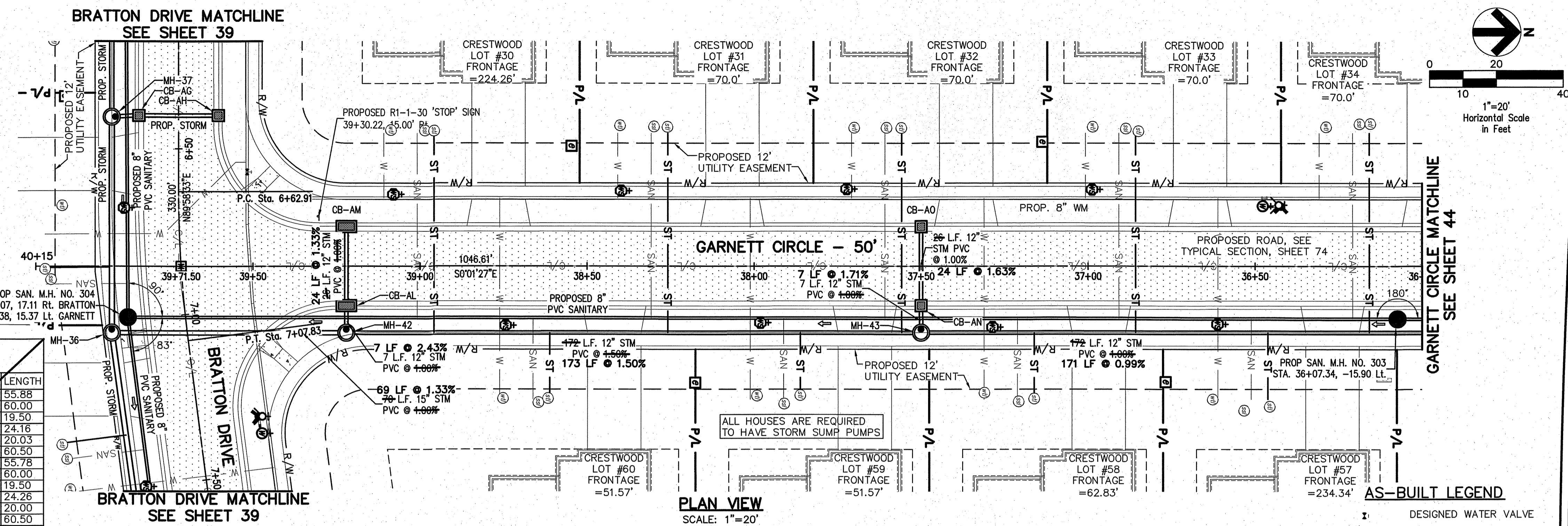


PROPOSED STRUCTURE TABLE	
Structure Name	Structure Details
CB-AL	ODOT CB No. 3 STA. 37+22.13-00 RT. 39+21.76, 12.33' LT RIM = 1076.11076.30 12" PVC INV (W)=1072.151071.88 12" PVC INV (E)=1072.151071.88
CB-AM	ODOT CB No. 3 STA. 37+22.13-00 RT. 39+21.99, 11.71' RT RIM = 1076.11076.30 12" PVC INV (E)=1072.11072.20
CB-AN	ODOT CB No. 3A STA. 37+50.13-00 RT. 37+49.52, 12.44' LT RIM = 1080.521080.48 12" PVC INV (W)=1076.251076.00 12" PVC INV (E)=1076.251076.00
CB-AO	ODOT CB No. 3A STA. 37+50.13-00 RT. 37+49.75, 12.09' RT RIM = 1080.521080.53 12" PVC INV (E)=1076.511076.39



GARNETT CIRCLE CONNECTION SCHEDULE				
UNIT	CONNECTION AT MAIN	RISER HT	LATERAL TERMINATION	LENGTH
34	SAN 36+20.80, 15.88' LT.	4'	36+20.80, 40.00' RT.	55.88
	ST 36+15.80, 20.00' LT.	-	36+15.80, 40.00' RT.	60.00
	WAT 36+30.80, 20.50' RT.	-	36+30.80, 40.00' RT.	19.50
	SAN 36+51.15, 15.84' LT.	3'	36+51.16, 40.00' LT.	24.16
	ST 36+46.15, 19.97' LT.	-	36+46.16, 40.00' LT.	20.03
	WAT 36+61.15, 20.00' RT.	-	36+61.16, 40.00' LT.	60.50
	SAN 36+90.80, 15.78' LT.	3'	36+90.80, 40.00' RT.	55.78
	ST 36+85.80, 20.00' LT.	-	36+85.80, 40.00' RT.	60.00
	WAT 37+00.80, 20.50' RT.	-	37+00.80, 40.00' RT.	19.50
	SAN 37+21.16, 15.74' LT.	-	37+21.16, 40.00' LT.	24.26
	ST 37+16.16, 20.00' LT.	-	37+16.16, 40.00' LT.	20.00
	WAT 37+31.16, 20.50' RT.	-	37+31.16, 40.00' LT.	60.50
	SAN 37+60.80, 15.69' LT.	-	37+60.80, 40.00' RT.	55.69
	ST 37+55.80, 20.00' LT.	-	37+55.80, 40.00' RT.	60.00
	WAT 37+70.80, 20.50' RT.	-	37+70.80, 40.00' RT.	19.50
	SAN 37+91.15, 15.64' LT.	-	37+91.16, 40.00' LT.	24.36
	ST 37+86.15, 19.84' LT.	-	37+86.16, 40.00' LT.	20.06
	WAT 38+01.15, 20.50' RT.	-	38+01.16, 40.00' LT.	60.50
	SAN 38+30.80, 15.59' LT.	-	38+30.80, 40.00' RT.	55.59
	ST 38+25.80, 20.00' LT.	-	38+25.80, 40.00' RT.	60.00
	WAT 38+40.80, 20.50' RT.	-	38+40.80, 40.00' RT.	19.50
	SAN 38+66.17, 15.54' LT.	-	38+66.17, 40.00' LT.	24.46
	ST 38+61.17, 20.50' RT.	-	38+61.17, 40.00' LT.	20.00
	WAT 38+76.17, 20.50' RT.	-	38+76.17, 40.00' LT.	60.50
	SAN 39+00.80, 15.49' LT.	-	39+00.80, 40.00' RT.	55.94
	ST 38+95.80, 20.00' LT.	-	38+95.80, 40.00' RT.	60.00
	WAT 39+10.80, 20.50' RT.	-	39+10.80, 40.00' RT.	19.50

STORM SEWER
 REFER TO GENERAL NOTES SHEET 5 FOR GENERAL NOTES.
 ALL RCP PIPE SHALL BE CLASS 4 PER ODOT 706.02
 ALL HDPE PIPE SHALL BE SMOOTH LINED PER ODOT 707.33
 ALL PVC PIPE SHALL BE SDR 35 PER ODOT 707.45

GARNETT CIRCLE WATER MAIN FITTING SCHEDULE		
ITEM	STATION	OFFSET
6" HYD. ASSEMBLY, TYPE B	36+42.22	18.00' RT.
8" LINE VALVE	39+43.84	20.50' RT.

NOTE:
 ANY SERVICE LATERAL CROSSING WATER MAIN SHALL MAINTAIN 18" MINIMUM CLEARANCE.
 ALL WATER MAIN PIPE JOINTS WITHIN AREAS OF FILL MUST BE RESTRAINED.

AS-BUILT LEGEND

	DESIGNED WATER VALVE
	DESIGNED HYDRANT
	ASBUILT ELECTRIC PULLBOX
	ASBUILT WATER VALVE
	ASBUILT HYDRANT
	STORM ASBUILT LATERAL TERMINATION
	SANITARY ASBUILT LATERAL TERMINATION
	WATER ASBUILT LATERAL TERMINATION

LEGEND
 SEE GENERAL LEGEND, SHEET 4

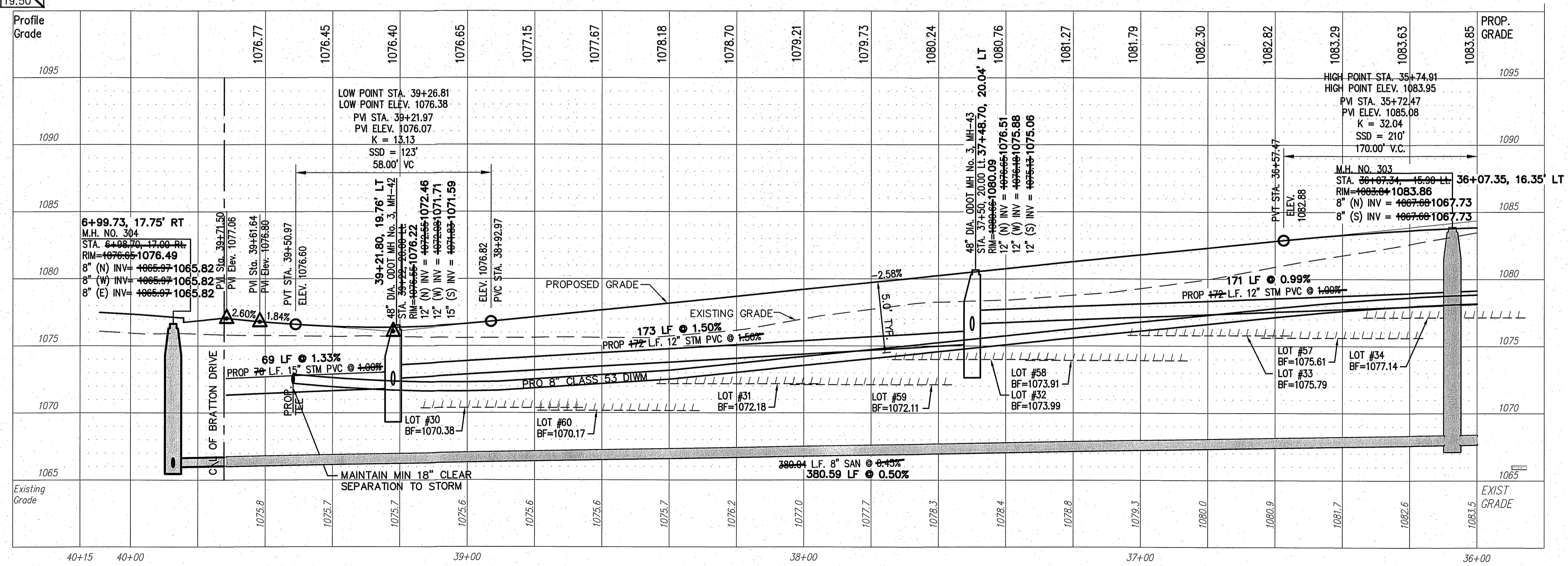
	PROPOSED ROLLED CURB AND GUTTER
	PROPOSED WALK
	PROPOSED WALK BY OTHERS
	PROPOSED WATER LATERAL
	PROPOSED SANITARY LATERAL
	PROPOSED STORM LATERAL
	PROPOSED WATER MAIN
	PROPOSED SANITARY MAIN
	PROPOSED STORM MAIN
	PROPOSED C/L OF CONSTRUCTION
	PROPOSED C/L OF RIGHT OF WAY
	PROPOSED BOTTOM OF FOOTER ELEVATION
	PROPOSED ASPHALT PAVEMENT

Underground Utilities

2 Working Days Before You Dig
 Call 800-362-2764 (Toll Free)
 Ohio Utilities Protection Service

Non-members Must Be Called Directly
 Call 800-925-0988 (Toll Free)
 Oil & Gas Producers Utility Protection Service

NOTE:
 ALL OIL AND GAS WELL REMOVALS, PLUGGING/CAPPING, AND ABANDONMENTS SHALL BE IN ACCORDANCE WITH ALL ASSOCIATED REGULATIONS FOR SUCH REMOVALS, INCLUDING BUT NOT LIMITED TO, ODNR, LOCAL, STATE, AND FEDERAL.
 EXISTING HIGH PRESSURE GAS MAIN SHALL BE LOCATED AND PROTECTED PRIOR TO AND THROUGHOUT CONSTRUCTION.



PROFILE VIEW
 HORIZONTAL SCALE: 1"=20'
 VERTICAL SCALE: 1"=5'

REV.	DATE	DESCRIPTION
12/9/14		BRIDGE PLAN REVISIONS

THE PRESERVE AT MILLER'S FARM
 SE CORNER OF SR 18 AND MEDINA LINE RD
 COPLEY, OHIO 44321

PLAN AND PROFILE
 GARNETT CIRCLE

ISSUED FOR:

PERMIT	06-02-14
BID	06-02-14
CONSTRUCTION	09-16-14
AS-BUILT	02-26-15

PROJECT MANAGER	DESIGNER
MAL	KB

JOB NO.
2013258.00

45/81